



DimillosYacht Sales
1 Long Wharf, Portland, ME 04101
Phone: 207-773-7632

Coastal Craft 56

Boat Type: Motor Yacht



OVERVIEW

The Coastal Craft 56 provides a smooth ride, quiet operation but impressive speeds of over 38 knots fully loaded. However you and your guests will be equally impressed with the interior detailing, which Feature Intellian Satellite TV, Sirius Satellite Radio, a Bose Lifestyle V35 entertainment system with docking stations and remotes. On a cold day the in floor heating will keep you cozy, and you and your guests can enjoy two full-sized staterooms each with private head and shower. The master stateroom (forward) has a walk-around king-size bed.

The galley is equipped with the latest gourmet kitchen technology including Miele® induction cooking with convection oven, Fisher/Paykel® super energy-efficient dishwasher and Sub-Zero® drawer-style refrigerator & freezer and granite counter-tops.

The private staterooms and gourmet kitchen and dining area, make the 56 the ideal yacht for entertaining in luxury.

SPECIFICATIONS

Basic Information

Manufacturer:	Coastal Craft	Boat Type:	Motor Yacht
Model:	56	Hull Material:	Aluminum
Year:	2016	Hull Type:	
Category:	Power		

Dimensions & Weight

Length:	56.00 ft	Draft - max:	4 ft 9 in - 1.45 meter
LOA:	56 ft 6 in - 17.22 meter	Bridge Clearance:	-
Beam:	16 ft 6 in - 5.03 meter	Dry Weight:	55000 ft
Deadrise Aft:	-		

Tank Capacities

Fuel Tank:	-	Holding Tank:	-
Fresh Water Tank:	-		

Accommodations

Total Cabins:	2	Crew Cabins:	-
Total Berths:	-	Crew Berths:	-
Total Sleeps:	-	Crew Sleeps:	-
Total Heads:	2	Crew Heads:	-
Captains Cabin:	No		

FEATURES

- Two staterooms with two heads
 - Marine aluminum construction
 - Yacht finishing
 - High quality yacht construction
 - Constructed to ABYC yacht standards
 - 7 to 30 knot cruising speeds
 - 36 knots top speed
 - Impressive performance and fuel economy
 - Lower maintenance and operating costs
 - Superior strength
 - Low sound levels
-
- IPS Joystick offers ease of handling
 - Large swim step area
 - 4 helm stations
 - Spacious aft cockpit area
 - Fly bridge with seating for 8
 - Excellent sight lines from lower helm

- Spacious master stateroom with king bed
 - Large head with separate shower
 - Chef's galley
 - Cherry interior finish work
-
- E-Plex network switching and monitoring
 - Hydronic heating (5 zones)
 - In-floor radiant heating
 - Full integrated marine navigation electronics
 - Automatic fire suppression system
 - Bose® entertainment center
 - Air conditioning (3 zones)
 - Window blinds
 - Alexseal® paint system
 - Antifouling paint
 - Lithium "Hybrid" electrical system

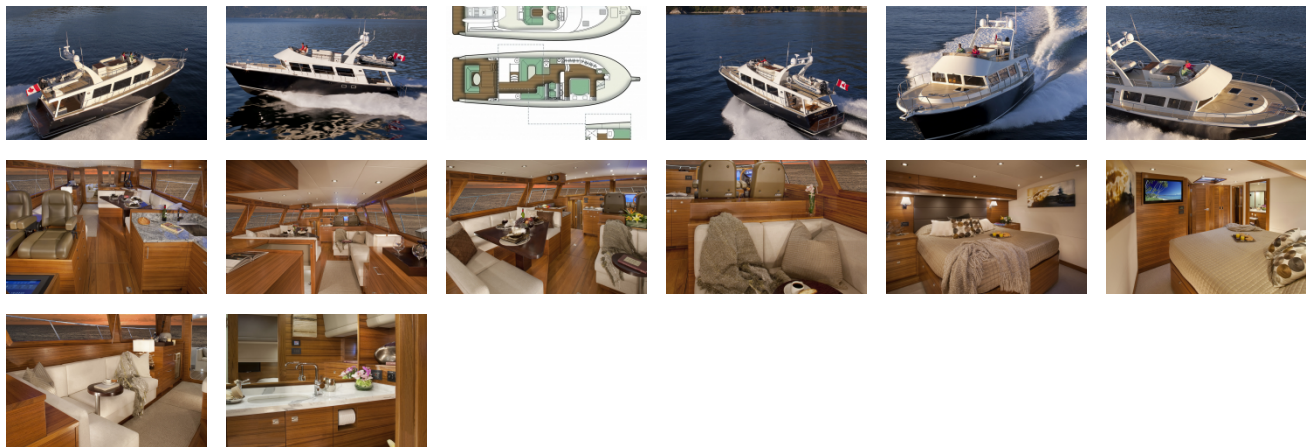
External Links

- [Coastal Craft](#)

Attachment

- [Performance Data](#)

GALLERY



DimillosYacht Sales
1 Long Wharf, Portland, ME 04101
Phone: 207-773-7632