



DimillosYacht Sales
1 Long Wharf, Portland, ME 04101
Phone: 207-773-7632

Coastal Craft 56

Boat Type: Motor Yacht



OVERVIEW

Heavenly.

The Coastal Craft 56. Exquisite comfort, surprisingly ample living space and extraordinary performance characteristics combine to place the 56 in a category all her own. As a cruising vessel, she is unmatched, offering speed, fuel efficiency and remarkable open water performance. Hand built luxury has never felt so good.

POWER

The 56 is powered by Twin Volvo® D13-900hp engines, with twin IPS3 drives, generating an impressive maximum speed of 38 knots and a maximum cruising speed of 31 knots. Her range @ 31 knots (with 10% reserve) is 350 nautical miles.

(Range @ 8 knots (with 10% reserve) 800 NM).

PERFORMANCE

The commercial grade welded aluminum planing hull of the 56 offers smooth and secure offshore seaworthiness, a gentle ride, quiet operation and a remarkable fuel efficiency given her size. With two full-size staterooms, each with

accompanying private head and shower, a gourmet kitchen and dining area, the 56 is the ideal yacht for entertaining in luxury.

PERFORMANCE

The commercial grade welded aluminum planing hull of the 56 offers smooth and secure offshore seaworthiness, a gentle ride, quiet operation and a remarkable fuel efficiency given her size. With two full-size staterooms, each with accompanying private head and shower, a gourmet kitchen and dining area, the 56 is the ideal yacht for entertaining in luxury.

TECHNOLOGY

As with all Coastal Craft hand made yachts, the technology is world class. With the E-Plex Multiplex monitoring and switching system, your iPad puts all the yacht's controls at your fingertips. A Bose sound system and 3-zone air conditioning highlight an industry-leading array of "smart technology".

SPECIFICATIONS

Basic Information

Manufacturer:	Coastal Craft	Boat Type:	Motor Yacht
Model:	56	Hull Material:	Aluminum
Year:	2019	Hull Type:	
Category:	Power		

Dimensions & Weight

Length:	56.00 ft	Draft - max:	4 ft 9 in - 1.45 meter
LOA:	56 ft 6 in - 17.22 meter	Bridge Clearance:	-
Beam:	16 ft 6 in - 5.03 meter	Dry Weight:	60000 ft
Deadrise Aft:	-		

Tank Capacities

Fuel Tank:	800 gallons - 1 tank(s)	Holding Tank:	70 gallons - 1 tank(s)
Fresh Water Tank:	180 gallons - 1 tank(s)		

Accommodations

Total Cabins:	-	Crew Cabins:	-
Total Berths:	-	Crew Berths:	-
Total Sleeps:	-	Crew Sleeps:	-
Total Heads:	2	Crew Heads:	-
Captains Cabin:	No		

FEATURES

CONSTRUCTION

Signature Marine Aluminum Construction
Yacht finishing
Impressive performance and fuel economy
Lower maintenance and operating costs
Superior strength & Low Sound Levels

DECKS

Teak Finishings
Spacious aft deck
Fly bridge with seating for eight
Large swim step area

INTERIORS

Solid teak plank flooring
Solid wood interior window frames
Cherry interior finish work
Excellent sight lines from lower helm
Bose® entertainment center
Spacious aft cockpit area
Compact washer/dryer

CHEF'S GALLEY

- Miele® oven and cooktop
- Solid surface countertops
- Subzero® under counter refrigerator

TWO STATEROOMS AND TWO HEADS

MASTER STATEROOM

- Island berth 68" x 78" with 8" mattress
- Carpet flooring
- Interior cabinets & panels with teak finishing

MASTER HEAD WITH SHOWER

- Aluminum shower insert with glass wall and door
- Marble flooring
- Full size quiet flush toilet
- Teak finishing
- Marble/solid surface countertops

GUEST STATEROOM

- Two single berths 33" x 80"
- Carpet flooring
- Teak finishing
- Opening port light

GUEST HEAD WITH SHOWER

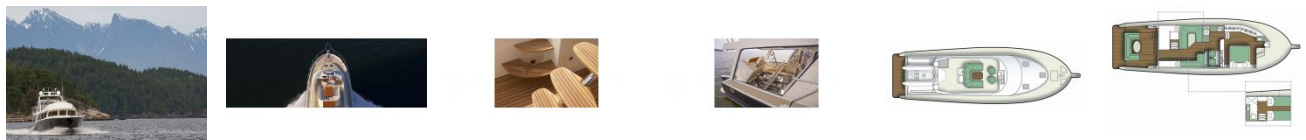
- Teak finishing
- Marble flooring

- Shower insert (aluminum) with glass wall and door
- Full size quiet flush toilet

External Links

- [Coastal Craft](#)

GALLERY



DimillosYacht Sales
1 Long Wharf, Portland, ME 04101
Phone: 207-773-7632