



DimillosYacht Sales
1 Long Wharf, Portland, ME 04101
Phone: 207-773-7632

Coastal Craft 65 Concord

Boat Type: Motor Yacht



OVERVIEW

65' Concord

When the first Coastal Craft signature aluminum 65 Concord launched in 2014, it won the coveted AIM Editors Choice Award for Best Motor Yacht, 60-69'. The rave reviews across all North American yacht publications were unanimous, with one reviewer memorably stating: "the 65 Concord deserves the designation of Mini Mega-yacht". The 65 Concord is handmade perfection; the rarest of yachts, built for the most experienced and discerning of Captains.

POWER

Powered by twin Volvo 13L, 900hp diesel engines with high performance IPS3 pods, the Concord boasts a top speed of 33 knots, a cruising speed of 26 knots, and open water stability unmatched at its size.

TECHNOLOGY

The 65 offers 4 helm stations, 3 luxurious staterooms, 3 heads each with a shower, a spacious main salon and a full height engine room. The hand made joinery and Sapele interior finishes throughout are complimented by the very

latest communications and integration technology. The E-plex® Multiplex switching and monitoring put all of her controls at your fingertips via iPad.

PERFORMANCE

The low displacement aluminum hull on the 65 provides a best in class strength-to-weight ratio and extraordinary fuel efficiency for her size, resulting in dramatically improved range. The ride in virtually any sea is soft, silent and secure, with an elegance that will impress even the most jaded yacht owner. Silent, seaworthy and stable at any speed is the hallmark of the 65.

SPECIFICATIONS

Basic Information

Manufacturer:	Coastal Craft	Boat Type:	Motor Yacht
Model:	65 Concord	Hull Material:	Aluminum
Year:	2018	Hull Type:	
Category:	Power		

Dimensions & Weight

Length:	65.00 ft	Draft - max:	5 ft - 1.52 meter
LOA:	66 ft 9 in - 20.35 meter	Bridge Clearance:	-
Beam:	17 ft - 5.18 meter	Dry Weight:	59000 ft
Deadrise Aft:	12.00 °		

Tank Capacities

Fuel Tank:	1330 gallons - 1 tank(s)	Holding Tank:	125 gallons - 1 tank(s)
Fresh Water Tank:	220 gallons - 1 tank(s)		

Accommodations

Total Cabins:	-	Crew Cabins:	-
Total Berths:	-	Crew Berths:	-
Total Sleeps:	-	Crew Sleeps:	-
Total Heads:	2	Crew Heads:	-
Captains Cabin:	No		

FEATURES

CONSTRUCTION

Signature Marine Aluminum Construction
33 knots top speed
Twin Volvo® IPS1200 Propulsion
Four helm stations including two aft docking stations
E-plex® multiplex (switching and monitoring)
Full integrated marine navigation electronics

Automatic fire suppression
Dometic Air conditioning
Awlgrip® yacht paint system
Interlux Micron antifouling bottom paint
Classification to CE Category B
Built to ABYC Standards (where applicable)
Excellent sight lines from lower helm
Full height engine room

DECKS

Fly Bridge with seating for 7
Summer kitchen with combo fridge/freezer/bar sink
Aft deck settee with teak table
Foredeck lounge pad
Large boarding/swim platform
Sunbrella® covers

INTERIORS

Spacious Main Salon
Bose® Lifestyle V35 entertainment system
HDTV D85U Series Aquos LCD TV
Wool carpet
Sapele interior finish work
Laundry Room with Miele appliances
Garburator

CHEF'S GALLEY

- Miele® appliances
- Fisher & Paykel DishDrawer™
- Granite countertops and back splash
- Stone flooring

THREE STATEROOMS AND THREE ENSUITES

MASTER STATEROOM

- Full beam
- Island King size bed
- Large vertical port lights
- Wool carpet
- Wall mounted 42" LCD HD TV

MASTER ENSUITE

- Luxurious & spacious
- Finished with Forzastone® marble
- Rainshower with glass partition

VIP STATEROOM

- Queen V-Berth
- Wool carpet
- Ensuite entry door

- Wall mounted 32" LCD HD TV

VIP ENSUITE

- Separate shower with glass enclosure
- Finished with Forzastone® marble

GUEST/CREW STATEROOM

- Two single berths
- Wall mounted 32" LCD HD TV

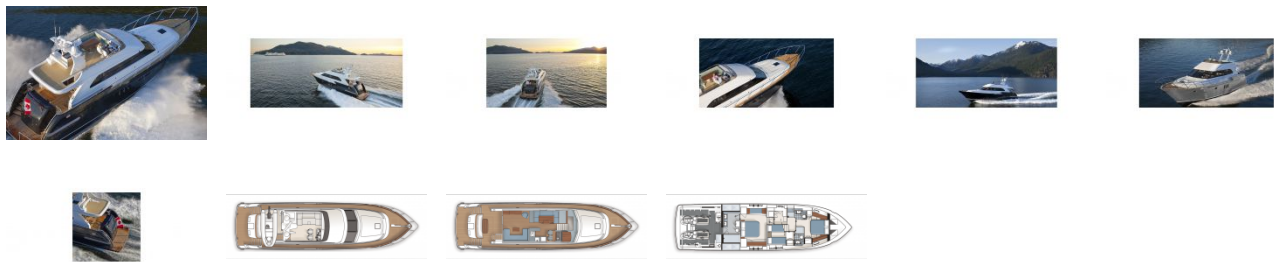
GUEST ENSUITE

- Separate shower
- Shower walls and ceiling aluminum
- Details finished with Forzastone® marble

External Links

- [Coastal Craft](#)

GALLERY



DimillosYacht Sales
1 Long Wharf, Portland, ME 04101
Phone: 207-773-7632