



Annapolis Yacht Sales
7350 Edgewood Rd.
Annapolis, MD 21403
Phone: 410.267.8181

Edgewater 230CC

Boat Type: Center Console



OVERVIEW

The EdgeWater 230CC boasts Single Piece Infusion Construction, a fully finished bilge and more standard features than other boats in its class. Packaged with Yamaha Four Stroke power up to 300hp, this boat is sure to impress in the performance category. It is the first in a fresh new line of offshore center console models designed to be the perfect blend between fishing and family cruising.

SPECIFICATIONS

Basic Information

Manufacturer:	Edgewater	Boat Type:	Center Console
Model:	230CC	Hull Material:	
Year:	2020	Hull Type:	
Category:	Power		

Dimensions & Weight

Length:	-	Draft - max:	-
LOA:	-	Bridge Clearance:	-
Beam:	-	Dry Weight:	-
Deadrise Aft:	-		

Tank Capacities

Fuel Tank:	-	Holding Tank:	-
Fresh Water Tank:	-		

Accommodations

Total Cabins:	-	Crew Cabins:	-
Total Berths:	-	Crew Berths:	-
Total Sleeps:	-	Crew Sleeps:	-
Total Heads:	-	Crew Heads:	-
Captains Cabin:	No		

FEATURES

Standard Features

CONSTRUCTION

- Single Piece Infusion (SPI) Structural System
- Limited Lifetime Structural Hull Warranty
- NMMA, ABYC & CE Certified
- Self-Bailing Non-Skid Decks
- NO WOOD All Composite Construction
- Closed-Cell Foam Flotation
- Variable Deadrise Deep V Hull
- High Density Composite Transom
- High Density Composite Transom
- White Gelcoat Hull Color

NOTABLE STANDARD FEATURES

- Gelcoat Hull Color
- Retractable Ski Pylon
- Powder Coated Package
- Fiberglass Hardtop
- Bow Table
- Bow Filler Cushion
- Freshwater Washdown
- Raw water Washdown

- Underwater Lights
- Forward Walk-in Head
- Integrated Swim Platform w/ Ladder
- Integrated Swim Platform w/ Anchor Storage

HARDWARE

- Stainless Steel Bow and Stern Eyes (3)
- Powder Coated Recessed Bow Rail
- Stainless Steel Gunwale Mounted Rod Holders (4)
- 8" Stainless Steel Pop-up Cleats (6)
- Transom Boarding Ladder
- Heavy Duty White Rubrail w/ Black Insert
- Walk-thru Transom Door w/ SS Latch
- Retractable Ski Pylon
- Stainless Steel Cockpit Toe Rails (2)

CONSOLE & TOP

- Fiberglass Hardtop, LED Spreader Lights (2), PFD Storage Bag and E-Box
- Powder Coated T-Top Frame with Rod Holders (4)
- Forward Walk-in Console w/ Fiberglass Liner
- 3/8" Clear Acrylic Windshield
- Deluxe Stainless Steel Steering Wheel w/ Power Knob
- Hydraulic Seastar® Steering w/ Tilt Helm
- Console Switch Panel w/ Waterproof Switches, Circuit breakers & 12V Outlet
- Console Mounted Porta-Potti with Pump out
- Head – Secured with Cockpit Table Storage, Dive Tank Storage, Bulk Storage, Lighting and Port Hole
- Ritchie Compass
- Stainless Steel Drink Holders on Console (2)
- Helm Catch all for Phones

ELECTRICAL SYSTEM

- LED Cockpit/Livewell Lighting
- LED Navigation Lights
- Underwater Blue LED Lights (2)
- 1250 GPH Auto/Manual Bilge Pump (1)
- Waterproof Electrical Connectors & Tin Plated Copper Wiring
- Battery Selector Switch & Wiring for Dual Batteries
- Lenco® Recessed Electric Trim Tabs w/ Indicators
- Accessory Outlet

COCKPIT & DECK

- Heavy-Duty Marine Grade UV Resistant Vinyl Upholstery
- U-Shaped Bow Lounge w/ Bolster Cushions

- Bow Filler w/ Cushions and Table Leg
- Forward Console Seat
- Integrated Stern Seat with storage
- 12 Gallon Insulated Baitwell (under rear seat)
- Under Gunwale Rod Racks
- Premium Powder Coated Bucket Bench Seat with Armrest, Flip up Bolsters and slide out premium 94qt cooler
- Insulated Bow Storage/Fishbox w/ Overboard Drain
- Raw Water Washdown Outlet
- Fresh Water Shower w/ 12 Gallon Reservoir

ANCHOR SYSTEM

- Bow Anchor Locker w/ Overboard Drain
- Dedicated Stern Anchor Locker

HULL COLORS

Hullside Color Dark w/ White Bottom

- COLORS: Midnight Blue, Stars & Stripes Blue, St. Barth's Blue

Hullside Color light w/ White Bottom

- COLORS: Pewter, Ice Blue, Sea Foam Green

Optional Features

TOPS + COVERS

- Console/Helm Seat Cover
- 15' Silver Radial Outriggers for T-Top or Hardtop
- 3-Sided Enclosure for T-Top or Hardtop

ENGINE PACKAGE

Yamaha F300 Four Stroke

- w/ Command Link Plus Electronic Controls, Digital Command Link Plus Multi-function Engine Display, Stainless Steel Props, Fuel/Water Separators (1)

Yamaha F250 Four Stroke (Standard)

- w/ Command Link Plus Electronic Controls, Digital Command Link Plus Multi-function Engine Display, Stainless Steel Props, Fuel/Water Separators (1)

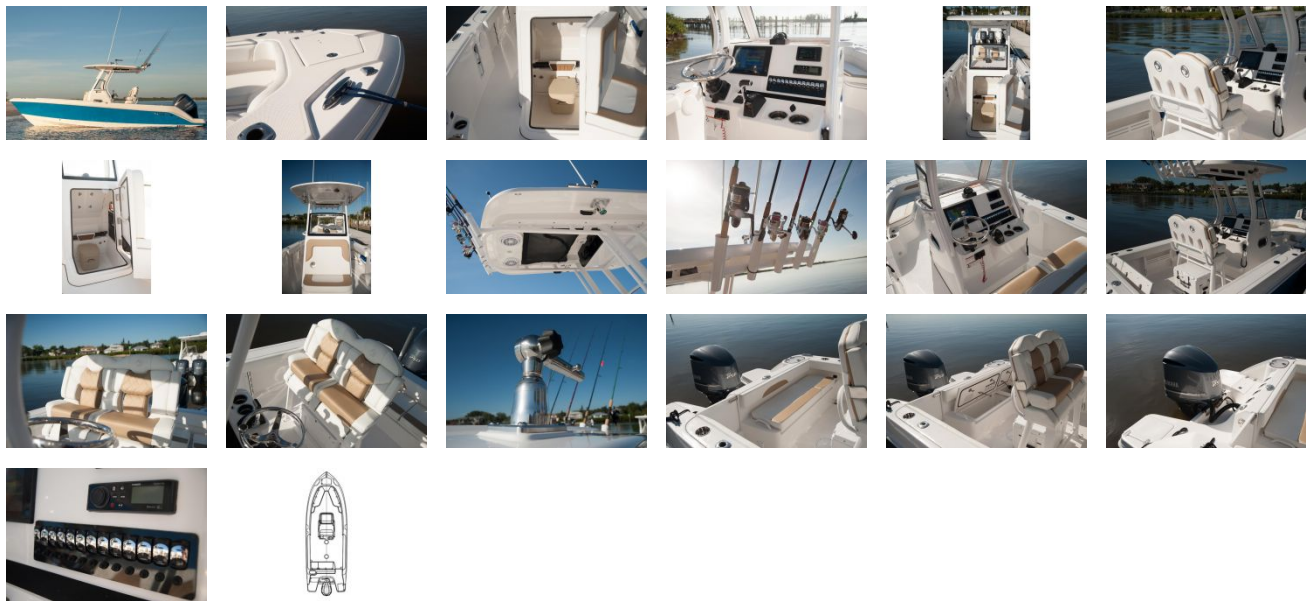
ELECTRONICS

- Garmin 7608xsv GPS/Map/Sounder
- Garmin 7612xsv GPS/Map/Sounder
- Garmin 200 VHF Radio w/ Antenna
- Garmin XM Satellite Weather Module
- Garmin GMR24xHD2 24" 4kw Radar
- Fusion Stereo Package w/Bluetooth & JL Audio 7.7" Speakers (4)

ACCESSORIES

- Electric Head w/ Integral Holding Tank, Overboard Discharge & Pumpout.
- Transom Mounted Rod Holders
- 28 Gallon Insulated Transom Livewell/Baitwell
- Painted Engine
- Forward Removable Backrests
- Anchor Windlass
- Additional Plumbed Baitwell
- 2 bank battery charger
- Forward and Aft Shade System

GALLERY



Annapolis Yacht Sales
7350 Edgewood Rd.
Annapolis, MD 21403
Phone: 410.267.8181