



**Formula Boats South**  
909 10th Street South Suite 102  
Naples, FL, US, 34102  
Phone: 239-331-2104

# Formula 400 Super Sport Crossover

Boat Type: Bowrider



## OVERVIEW

Introducing the Formula 400 Super Sport Crossover, a pivotal addition to the revolutionary Formula Crossover fleet – now five models strong and growing – that is rapidly changing the entire boating experience. Taking its cue from the phenomenal 430 SSC, the 400 combines confident Super Sport performance with Formula's versatile open bow and cabin Crossover elements. Now boaters can venture beyond narrowly defined conventions and enjoy all that boating was meant to be!

At 40' in length with a 12' beam, the 400 SSC centers on the full-height windshield and coupe top design that encloses the entire width of the cockpit, allowing guests to move beyond the confines of a center console's narrow,

pilothouse tradition. The Formula Crossover SmartZone™ concept creates separate areas for a variety of activities while encouraging connections among guests, from the expansive bow to triple helm seating to the outdoor kitchen and U-shaped lounge aft with convertible rear-facing sunpad and extended swim platform.

400 SSC cabin accommodations offer amenities that are unprecedented in an open bow design, including a convertible dinette/sleeping berth plus aft stateroom bed, stand-up private head compartment and entertainment galley with sink and microwave.

The FAS3Tech multi-step hull design with quad outboards delivers world renowned Formula performance. Break free in the newest addition to the Formula Crossover fleet, the Formula 400 Super Sport Crossover!

## SPECIFICATIONS

### Basic Information

Manufacturer:	Formula	Boat Type:	Bowrider
Model:	400 Super Sport Crossover	Hull Material:	
Year:	2019	Hull Type:	
Category:	Power		

### Dimensions & Weight

Length:	40.00 ft	Draft - max:	3 ft 4 in - 1.01 meter
LOA:	40 ft - 12.19 meter	Bridge Clearance:	13 ft 3 in - 4.04 meter
Beam:	12 ft - 3.66 meter	Dry Weight:	23700 ft
Deadrise Aft:	21.00 °		

### Tank Capacities

Fuel Tank:	400 gallons - 1 tank(s)	Holding Tank:	43 gallons - 1 tank(s)
Fresh Water Tank:	56 gallons - 1 tank(s)		

### Accommodations

Total Cabins:	-	Crew Cabins:	-
Total Berths:	-	Crew Berths:	-
Total Sleeps:	-	Crew Sleeps:	-
Total Heads:	-	Crew Heads:	-
Captains Cabin:	No		

## FEATURES

### 400 Super Sport Crossover Standard Equipment

#### 400 Super Sport Crossover Exterior

- NMMA Yacht Certification (Pending)
- Transferable 5-Year Formula Guard® Limited Protection Plan w/10-year Structural Warranty (USA only)
- Ashland Maxguard™ LE gelcoat
- Standard graphic in A, B or C w/Axalta™ Chroma Premier® basecoat & Imron® Elite clearcoat

- FAS3 TECH hull w/foam-filled continuous molded structural grid
- Chemically bonded & thru-bolted deck-to-hull joint
- Heavy-duty PVC gunwale w/stainless insert
- Concealed electric windlass w/digital chain counter, 150' chain, polished stainless anchor, yacht-design thru-hull stowage & freshwater anchor washdown system
- Remote-control ACR LED searchlight
- Stainless hardware & 316L welded rails
- Stainless custom Formula logo-cast cleats (12), fuel fills, polished engine room vent grilles, polished port lights w/screens (2) & oversized port light (1)
- Coupe top w/tinted, tempered windshield w/windshield wiper, sliding port walk-thru windshield panel & sport coupe side wings w/Lexan® side connectors & side vents, large, motorized coupe-top Taylor Made® glass sunroof w/Poseidon retractable sunshades and soft panels, blue LED accent lighting, dual flagstaff, American & Formula flags & white dual air horn
- Rockford Fosgate® waterproof transom-mounted stereo control & two 61 /2? JL Audio® blue LED lighted chrome-finished speakers
- Cockpit blue LED lighting system
- Woodgrain vinyl decking on swim platform
- Integrated swim platform w/removeable stainless swim ladder, retractable safety ladder & pull-up cleats
- 120V shorepower w/fail-safe galvanic isolator & two 30-amp cords
- Polished stainless shorepower & cable TV inlets, transom shower w/hot/cold controls & chrome-finished city water inlet

#### **400 Super Sport Crossover Cockpit**

- Continuous molded deck & cockpit liner
- Molded composite dash in Charcoal or Mocha w/Floating Liquid Black panels, Ritchie® compass, dual Raymarine® Axiom 12 GPS widescreen color chartplotters w/digital depth sounder, illuminated waterproof accessory rocker switches, E-T-A® circuit breakers, auxiliary 12V outlet, dual USB charging port, tilt wheel in leather wrapped stainless, lockable dash storage compartment, padded mobile device station w/dual USB charging port & blue LED accent lighting
- Mercury Digital Throttle & Shift (DTS) controls w/SmartCraft® VesselView®
- Mercury® Joystick Piloting for Outboard (JPO) w/Active Trim
- Digital switching
- Safety ignition tether & Bennett® AutoTrim Pro trim tab control & indicators
- Rockford Fosgate AM/FM stereo w/iPod/USB port, Bluetooth®, dash-mounted stereo control w/full color display, six hardtop & four cockpit 61 /2? JL Audio blue LED lighted chrome-finished speakers, aux input, 600W stereo amplification & 200W subwoofer
- Subscription-ready Sirius™ Satellite Radio
- 5 dual USB charging ports – 2 in aft cockpit, 2 in bow & 1 at sunpad
- 24 polished stainless drink holders
- Cockpit/swim platform blue/white LED?courtesy lights w/remote control
- Integral 316L safety rails
- Weather-resistant cockpit seating featuring Pre-Fixx® coating, Tenara® element-resistant thread, DriFast® foam & StarLite® XL synthetic marine panel construction
- Individual sit, stand or rest position triple helm & companion seats
- Two full-width helm footrests
- Dash multi-port ventilation system
- Modular bow seating/sunpad system w/triple-wide forward facing bow seating & dual armrest w/two Corian accented drink holders
- Two color-coordinated dual-height Corian bow tables w/filler cushions

- Under-cushion bow storage w/trash container, molded-in cooler & table storage
- Dedicated acrylic wind breaker panel
- Portside gear lockers (2) w/dedicated storage for dock lines & optional TV
- Color-coordinated cockpit galley w/custom-molded sink, Corian countertop, 120V/12V pullout cockpit refrigerator w/stainless front, trash container, paper towel holder & 120V GFCI outlet
- Galley pantry w/fire extinguisher & Cuisinart blender on door
- Portside & U-shaped aft lounges w/storage
- Powered, adjustable-height cockpit table w/woodgrain vinyl decking top, fitted Ultraleather™ table cover & filler cushion
- Aft-facing sun lounge w/multi-position backrests w/cushions & fender (4 included) storage below
- Disconnect switches for aux & start batteries
- Battery parallel emergency switches
- Woven cockpit mat
- Stainless transom gate w/inset acrylic panel
- Aft cockpit enclosure w/easy-mount zippers in color-coordinated non-fading Sunbrella® fabric w/Seamark™ vinyl undercoating

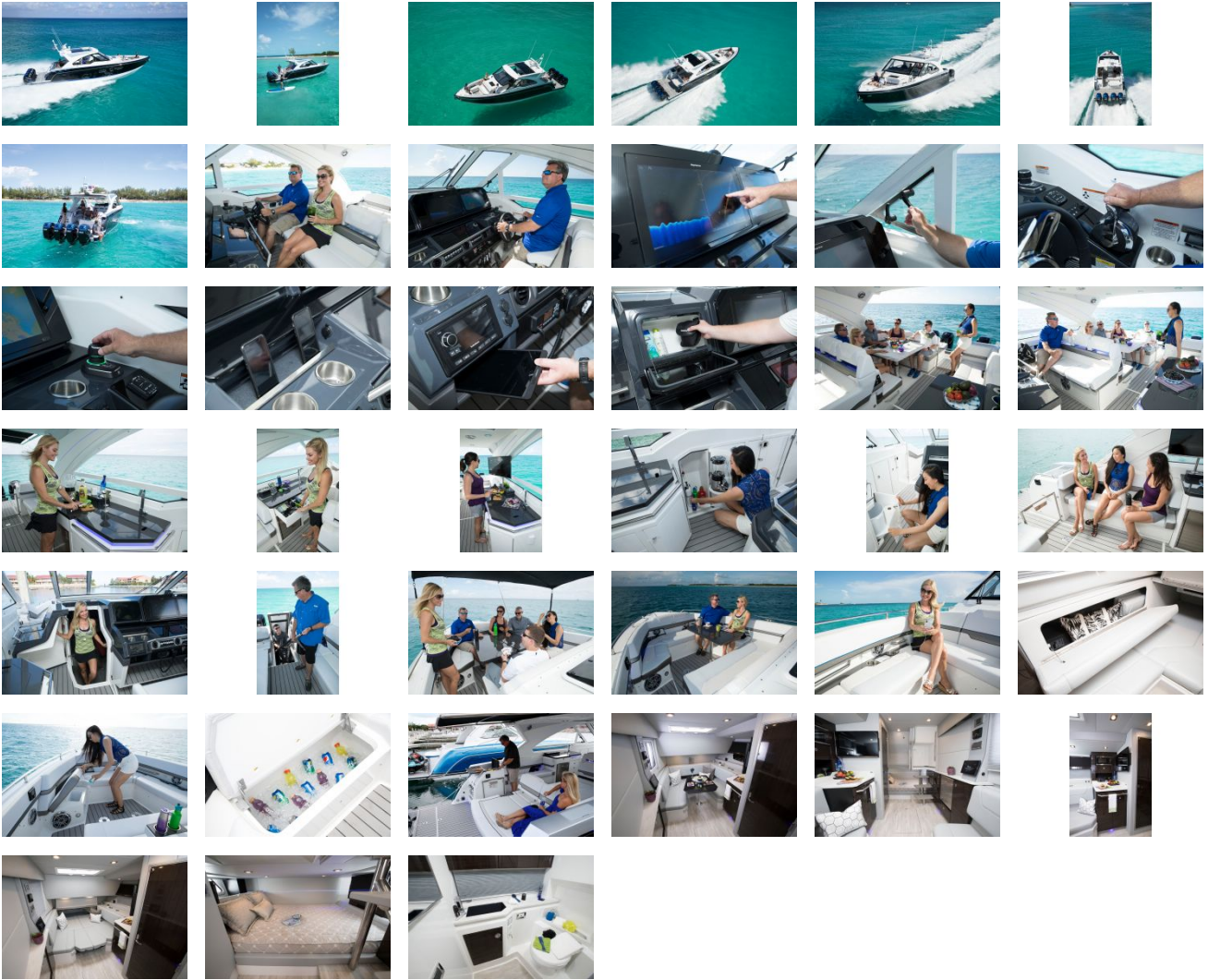
#### **400 Super Sport Crossover Cabin**

- Dash-integrated cabin door
- Solid wood cabin entry steps
- Walnut, Washed Oak, Baltic Birch or Gray Wash woodgrain-finish flooring throughout cabin
- Oversized Bomar cabin venting hatch w/integrated OceanAir® rollout SKYscreen & privacy shade
- Blue LED & accent lighting throughout cabin
- Ultraleather™ lounge w/dual-height, Open-Grain Walnut, Open-Grain Driftwood or high-gloss Ash or Wenge wood dining table w/filler cushions
- Custom décor pillows & draperies
- Poseidon pleated blind systems
- 12,000 BTU reverse cycle air conditioner w/digital touch control
- Illuminated 120V & 12V electrical panels
- Four 6 1/2" speakers
- Three dual USB charging ports – lounge (1) & aft cabin (2)
- Aft cabin w/privacy curtain, queen-size memory foam bed w/storage at foot, pillow shams & upholstered headboard w/storage
- Portside storage w/pullout Isotherm 120V/12V stainless refrigerator, additional drawer storage, cedar-lined hanging locker & fire extinguisher
- Electronics pylon w/Rockford Fosgate stereo remote control, air conditioning control & light switches
- Complete galley in Open-Grain Walnut, Open-Grain Driftwood or high-gloss Ash or Wenge finish w/storage & hardwood dovetailed drawer, full Corian countertop, Corian sink w/glideaway Corian self-cover, microwave, concealed trash container & water level gauge
- Main cabin 32" LED/LCD HDTV w/Blu-ray player w/WiFi & remote HDMI/USB connections
- Demand water system w/56-gallon capacity & one-point water fill for freshwater tank and/or city water
- 120V water heater
- Molded private head compartment w/vanity, Open-Grain Walnut, Open-Grain Driftwood or high-gloss Ash or Wenge finish lower doors, Corian countertop, custom-molded sink w/Moen® faucet, porcelain Flush and Forget® VacuFlush® head w/43-gallon holding tank & dockside pumpout, shower, exhaust fan & night light
- Automatic cabin bilge pump w/high water alarm
- Two carbon monoxide detectors

#### **400 Super Sport Crossover Equipment Room**

- Quad outboard engine installation w/thru-bolted engine mounts
- Motorized aft equipment room hatch lift
- Port equipment room access hatch
- Four starting & two auxiliary marine batteries w/battery retainers
- Sea chest raw-water manifold system
- Galvanic corrosion protection systems
- Bennett XPT Premier hydraulic trim tabs
- 7.5 KW/120V Westerbeke™ low-CO gas generator w/battery
- Stainless props

# GALLERY



**Formula Boats South**  
909 10th Street South Suite 102  
Naples, FL, US, 34102  
Phone: 239-331-2104