



**Jefferson Beach Yacht Sales**  
24400 Jefferson Avenue,  
St. Clair Shores, MI 48080  
Phone: 866-490-5297

# Princess Y88

Boat Type: Motor Yacht



## OVERVIEW

Our Y88 Motor Yacht personifies the finest qualities of Princess design and craftsmanship. Her unique deep-V hull design balances incredible fuel efficiency with breathtaking performance and agility. The vast flybridge and cockpit areas are exceptionally appointed for formal or social occasions. And from the saloon, at the touch of a button, a balcony unfolds over the sea, providing the perfect spot to enjoy a sunset.

Exquisitely handcrafted and furnished to your tastes, her vast interior is quintessentially Princess. Light reaches into every area with panoramic windows on the main deck. The expansive saloon and dining area create a wonderfully sociable space. On the lower deck you can choose between four or five en suite cabins, each one exuding the authentic Princess feeling of world-class quality. Generously proportioned crew quarters aft incorporating a captain's cabin, bunk cabin and crew mess complete her magnificent layout.

## SPECIFICATIONS

### Basic Information

Manufacturer:	Princess	Boat Type:	Motor Yacht
Model:	Y88	Hull Material:	
Hull Type:		Category:	Power

### Dimensions & Weight

Length:	88.00 ft	Draft - max:	5 ft 10 in - 1.78 meter
LOA:	88 ft - 26.82 meter	Bridge Clearance:	-
Beam:	20 ft 9 in - 6.32 meter	Dry Weight:	147710 ft
Deadrise Aft:	-		

### Tank Capacities

Fuel Tank:	2907 gallons - 1 tank(s)	Holding Tank:	-
Fresh Water Tank:	396 gallons - 1 tank(s)		

### Accommodations

Total Cabins:	-	Crew Cabins:	-
Total Berths:	-	Crew Berths:	-
Total Sleeps:	-	Crew Sleeps:	-
Total Heads:	-	Crew Heads:	-
Captains Cabin:	No		

## FEATURES

### Flybridge

- Helm position with powered raise/lower console, repeat navigation equipment including radar/ chartplotter and engine instrumentation
- Adjustable helm seat
- U-shaped seating area and teak table with removable centre section
- Twin forward facing L-shaped seating
- Sunpad with storage below (option for built-in spa bath)
- Radio/MP3 with waterproof speakers
- Wetbar including sink with electric barbecue and top loading coolbox
- Optional crane (550 kg SWL)
- Console and seat covers

### Cockpit

- U-shaped seating with teak folding table
- Twin transom gates leading to bathing platform with electro-hydraulic raise/lower mechanism, foldaway swimming ladder, hot and cold shower
- Door leading to crew quarters and engine room from side deck
- Transom doors giving direct access to lazarette and crew area

- Life raft storage
- Remote control 4.4m telescopic passerelle with folding handrail
- Stern docking control position
- Cockpit cover

### **Wheelhouse**

- Helm seat with electric adjustment
- U-shaped seating with table to port
- Helmsman's door to side deck and electric opening window to port
- Full engine instrumentation including fuel gauges, exhaust temperature, fuel contamination alarms, rudder position indicator
- Navigation system including colour radar, GPS and chartplotter (3 displays), VHF/RT, speed and distance log, echo sounder with alarm, autopilot and high speed magnetic compass
- Controls for bow thruster, windscreen wipers, bilge pump and trim tabs (with indicator)
- CCTV linked into display at lower helm
- Intercom to flybridge and all cabins
- Automatic foghorn with loudhailer
- Chart table with light and chart storage
- 24v and 240v control panel
- Red night lighting
- Toughened glass screen (clear for night vision)

### **Deck Saloon**

- L-shaped seating area with two armchairs, two-seater sofa and coffee table
- Entertainment centre incorporating 49" UHD LED TV on electric raise/lower mechanism and DVD, radio/MP3 system with surround sound system
- Sideboard unit with bottle and glass storage, refrigerator and icemaker
- Dining area (8 people) with sideboard units to port
- Option of sliding doors combined with balcony on starboard side
- Day head

### **Galley**

- 4-zone ceramic hob
- Combination microwave/convection oven with grill
- Twin stainless steel sinks with mixer tap
- Large refrigerator with deep freeze drawers
- Dishwasher
- Storage lockers, cupboards and drawers
- Access door to side deck

### **Owner's Stateroom**

- Large double bed with bedside tables and drawers below
- Dressing area with wardrobes with hanging and drawer storage
- Dressing table with chair
- Occasional table with seats fore and aft
- Built-in safe
- Refrigerator

- 49" UHD LED TV and DVD, radio/MP3 system with surround sound
- En suite bathroom with heated towel rail and bidet
- Optional five cabin layout replaces the owner's stateroom with two en suite staterooms

#### **Forward Stateroom**

- Large double bed with drawers below
- Walk-in wardrobe with shelves
- Dressing table with stool
- 32" HD LED TV
- Radio/MP3
- En suite bathroom with heated towel rail

#### **Port Guest Cabin**

- Two single beds with drawers below (with the option of powered conversion to double)
- Wardrobe with shelves
- Bedside table with storage
- En suite bathroom with heated towel rail

#### **Starboard Guest Cabin**

- Large double bed with drawers below
- Wardrobe with shelves
- Dressing table with stool
- 49" UHD LED TV and DVD, radio/MP3
- Bedside tables with storage
- En suite bathroom with heated towel rail

#### **Lower Accommodation Lobby**

- The lobby area has a full-height storage cupboard of fitting an additional washer/dryer
- Under-floor storage

#### **Crew Quarters**

- Captain's cabin with double bed, desk, wardrobe and storage lockers
- Crew cabin with two single beds, wardrobe and storage lockers
- Bathroom with separate stall shower, electric freshwater toilet and washbasin
- Crew mess with microwave oven, sink, refrigerator and washing machine with separate dryer
- Access to engine room

#### **Deck Fittings**

- Teak-laid transom platform, cockpit deck, flybridge, flybridge stairway, side decks and foredeck walkthrough
- Twin self-stowing 80kg/176lb and 50kg/110lbs Delta anchors with 100m of chain (each)
- Twin reversible hydraulic anchor winches with foredeck and three station controls
- Twin electric sternline mooring winches
- Stainless steel cleats, fairleads and handrails
- Foredeck seating and sunbathing area
- Storage lockers for rope, fenders and foredeck sunbed cushions
- Telephone connection point

- Stern docking lights
- LED deck level lighting
- Freshwater deck/anchor wash

### **Accommodation**

- All cabins and bathrooms feature opening portholes and air conditioning outlets
- All cabins feature 220/240v power points
- All mattresses pocket sprung
- All bathrooms feature full shower stalls, electric toilets, extractor fan and 240v shaver points

### **Interior Finish**

- Furniture in Rovere Oak with satin or high gloss finish. Walnut or Alba Oak available as an option
- All guest bathroom worktops and floors in choice of marble, granite or quartz
- Galley worktops in choice of granite or quartz
- Choice of high quality carpet and upholstery fabric from extensive range
- Curtains, blinds or sunscreens to all windows and portholes
- Timber-laid galley and wheelhouse floors

### **Power and Drive Systems**

- 5-bladed propellers in nickel aluminum bronze
- Bow thruster (240kgf/529lbf)
- Power-assisted electro-hydraulic steering system with hydraulic back-up
- Electronic engine and gear shift control system
- Dripless shaft seals
- Engine room extractor fan with electronic time delay

### **Electrical System**

24 Volt:

- 4 x heavy duty batteries for engine starting
- 6 x heavy duty auxiliary batteries
- Additional battery bank for generators
- 2 x 60 amp battery charger charges both banks of batteries via an automatic switch charging system
- Remote battery master switches with control switch at main panel
- LED lighting throughout

220/240 Volt:

- 2 x 27kW diesel generator in own sound shield with water cooled specially silenced exhaust
- 2 x 63 amp shore support inlet
- Earth leakage safety trip, polarity check system, circuit breaker on all circuits
- Power points in all areas

### **Fuel System**

- Twin fuel tanks (in NS8 marine grade alloy) with interconnection system giving 2420 gal/2907 US gal/11000l
- Fuel fillers on port and starboard side decks
- High capacity duplex fuel filters/water traps with audible and visual fuel contamination warning system

- Remote fuel cocks in cockpit locker

### **Water System**

- 285 gal/342 US gal/1295l plus 45 gal/54 US gal/205l hot water calorifier, heated by engines and 240v immersion heater
- Water level gauge
- Electric freshwater WC system with 110 gal/132 US gal/500l holding tank

### **Air Conditioning**

- 195,000Btu chilled water system with outlets in all accommodation areas and incorporating reverse cycle heating with linked windscreen de-mist system. Suitable for tropical conditions (40°C)

### **Fire Extinguishers**

- Automatic/manual override fire extinguishers in engine room with warning system at both helm positions and incorporating engine air vent closure system
- Hand-operated fire extinguishers in all cabins, galley, crew and lower helm

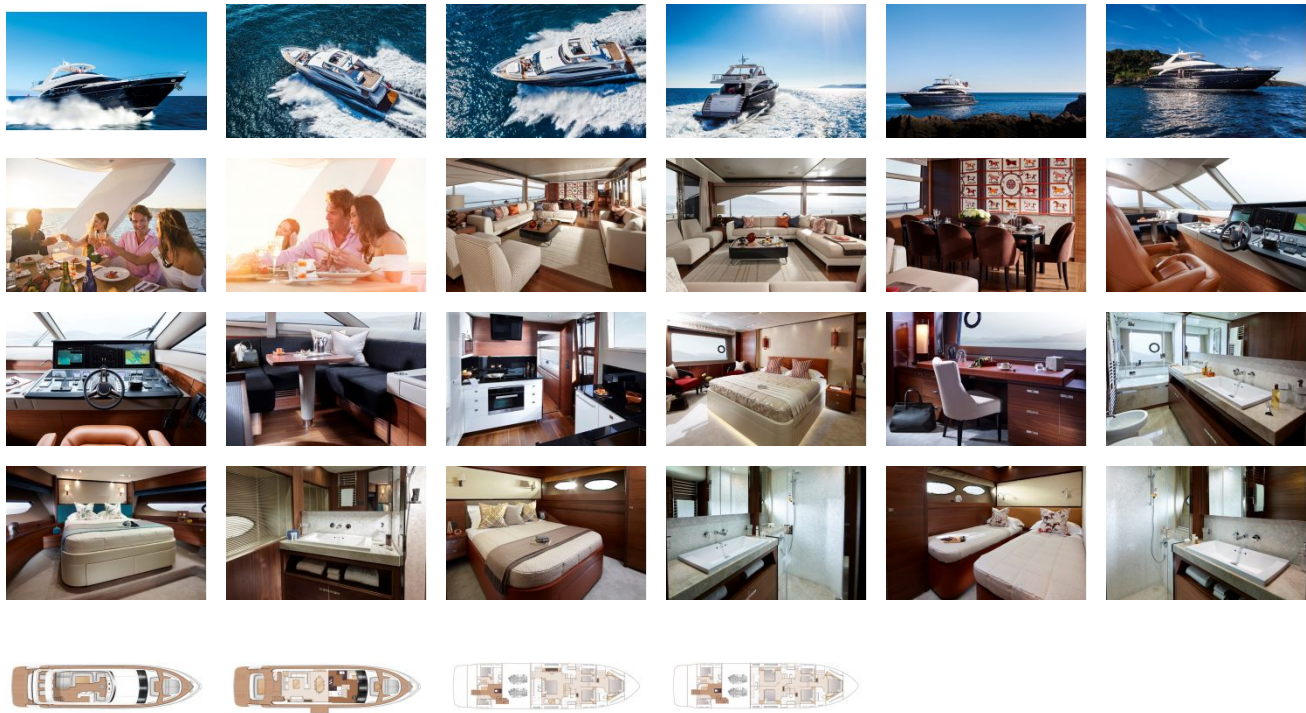
### **Bilge Pumps**

- Automatic electric bilge pumps
- High capacity manual bilge pumps with valve system and suction points in same areas

### **Other Items Supplied as Standard**

- Set of cutlery, crockery and glasses (8)
- Set of towels (8 large, 8 small)
- Ensign staff
- Fenders (8) and warps (4)
- First aid kit
- Set of manuals

GALLERY



**Jefferson Beach Yacht Sales**  
24400 Jefferson Avenue,  
St. Clair Shores, MI 48080  
Phone: 866-490-5297