

**IMS Yachts**

2525 Marina Bay Drive West Suite 205

Fort Lauderdale, FL, 33312

Phone: (954) 374-3434

# Princess Y85

Boat Type: Motor Yacht



## OVERVIEW

The all-new Y85 is a triumph of contemporary design. Her elegant sweeping profile houses an interior sanctuary that resets the benchmark for modern living. Her flybridge is an irresistible invitation to al fresco entertainment with a large dining area opposite a well-equipped wet bar further complemented by a large aft sunpad. With twin MAN V12 engines propelling her to a top speed of 33 knots, she flies past her contemporaries without looking back. An expansive single-level main deck provides ample entertaining space with a flexible galley arrangement. Three separate seating areas ensure the utmost privacy for guests with the crew able to move discretely around the yacht. Below deck, up to eight guests are accommodated across four beautifully appointed en suite cabins. Amidships, the full beam master suite is a champion of spacial design, whilst the en suite VIP cabin, forward, boasts a large double bed and walk-in-wardrobe. Furthermore, one double and one twin cabin (convertible into a double) complete her spacious accommodation. Unmissable, the all-new Y85 is unmistakably Princess.

## SPECIFICATIONS

### Basic Information

Manufacturer:	Princess	Boat Type:	Motor Yacht
Model:	Y85	Hull Material:	
Year:	2020	Hull Type:	
Category:	Power		

### Dimensions & Weight

Length:	85.00 ft	Draft - max:	5 ft 10 in - 1.78 meter
LOA:	86 ft - 26.21 meter	Bridge Clearance:	-
Beam:	20 ft 8 in - 6.3 meter	Dry Weight:	146607 ft
Deadrise Aft:	-		

### Tank Capacities

Fuel Tank:	2905 gallons - 1 tank(s)	Holding Tank:	-
Fresh Water Tank:	396 gallons - 1 tank(s)		

### Accommodations

Total Cabins:	-	Crew Cabins:	-
Total Berths:	-	Crew Berths:	-
Total Sleeps:	-	Crew Sleeps:	-
Total Heads:	-	Crew Heads:	-
Captains Cabin:	No		

## FEATURES

### Deck Fittings

- Teak-laid transom platform, cockpit deck, flybridge, flybridge stairway, side decks and foredeck walkthrough
- Twin self-stowing 80kg/176lb and 50kg/110lbs Delta anchors with 100m and 70m of chain respectively
- Twin reversible hydraulic anchor winches with foredeck, main helm and flybridge controls
- Twin electric sternline mooring winches
- Stainless steel cleats, fairleads and handrails
- Foredeck seating and sunbathing area
- Storage lockers for rope, fenders and foredeck sunbed cushions
- Telephone connection point
- Stern docking lights
- LED deck level lighting
- Freshwater deck/anchor wash

### Cockpit

- U-shaped seating with teak folding table
- Twin transom gates leading to bathing platform with electro-hydraulic raise/lower mechanism, foldaway swimming

ladder, hot and cold shower

- Door leading to crew quarters and engine room from side deck
- Transom doors giving direct access to lazarette and crew area
- Remote control 4.4m telescopic passerelle with folding handrail
- Cockpit cover

### **Flybridge**

- Helm position with powered raise/lower console, repeat navigation equipment including radar/ chartplotter and engine instrumentation
- Twin adjustable helm seats
- U-shaped seating area with folding teak table
- Twin forward facing L-shaped seating
- Sunpad with storage below (option for built-in spa bath)
- Naim audio system with waterproof speakers (2)
- Wetbar including sink with electric barbecue and drawer refrigerator
- Optional crane (550 kg SWL)
- Life raft storage
- Console and seat covers

### **Wheelhouse**

- Twin helm seats with electric adjustment for helmsman
- U-shaped seating with table to port
- Helmsman's door to side deck and electric opening window to port
- Full engine instrumentation including fuel gauges, exhaust temperature, fuel contamination alarms, rudder position indicator
- Navigation system including colour radar, GPS and chartplotter (2 displays), VHF/RT, speed and distance log, echo sounder with alarm, autopilot and high speed magnetic compass
- Controls for bow thruster, windscreen wipers, bilge pump and trim tabs (with indicator)
- Intercom to flybridge
- Automatic foghorn with loudhailer
- Chart storage
- 24v and 240v control panel
- Red night lighting
- Toughened glass screen (clear for night vision)

### **Deck Saloon**

- Twin L-shaped seating area with two-seater sofa and coffee table
- Entertainment centre incorporating 55" UHD LED TV on electric raise/lower mechanism with Naim audio system and ceiling mounted speakers (4)
- Sideboard unit with bottle and glass storage and refrigerator
- Dining area (8 people) with full-height panoramic window
- Day head

### **Galley**

- 4-zone induction hob
- Combination microwave/convection oven with grill
- Twin stainless steel sinks with mixer tap

- Full-height refrigerator/deep freeze
- Icemaker
- Dishwasher
- Storage lockers, cupboards and drawers
- Access door to side deck
- Electrically operated sliding screen to fully enclose galley

### **Accommodation**

- All cabins and bathrooms feature opening portholes and air conditioning outlets
- All cabins feature 220/240v power points
- All mattresses pocket sprung
- All bathrooms feature full shower stalls, electric freshwater toilets, extractor fan and 240v shaver points

### **Owner's Stateroom**

- Large double bed with bedside tables and drawers below
- Dressing area with wardrobes with hanging and drawer storage
- Dressing table with chair
- Occasional table with seats fore and aft
- Built-in safe
- 55" UHD LED TV with Naim audio system with speakers (2) and subwoofer
- En suite bathroom with heated towel rail

### **Forward Stateroom**

- Large double bed with drawers below
- Walk-in wardrobe with shelves
- Dressing table with stool
- 32" HD LED TV
- Naim audio system with CD/DVD paired with ceiling mounted speakers (2)
- En suite bathroom

### **Starboard Guest Cabin**

- Two single beds with drawers below (with the option of powered conversion to double)
- Wardrobe with shelves
- Storage lockers
- Bedside tables with storage
- Ensuite bathroom

### **Port Guest Cabin**

- Large double bed with drawers below
- Wardrobe with shelves
- Dressing table with stool
- Storage lockers
- Bedside tables with storage

- En suite bathroom

### **Lower Accommodation Lobby**

- The lobby area has a full-height storage cupboard with the option of fitting an additional washer/dryer

### **Crew Quarters**

- Captain's cabin with single bed, desk, wardrobe and storage lockers
- Crew cabin with two single beds, wardrobe and storage lockers
- Bathroom with separate stall shower, electric freshwater toilet and washbasin
- Crew mess with microwave oven, sink, refrigerator and washing machine with separate dryer
- Access to engine room

### **Interior Finish**

- Furniture in Rovere Oak with satin or high gloss finish. Walnut or Alba Oak available as an option
- All guest bathroom worktops and floors in choice of marble, granite or quartz
- Galley worktops in choice of granite or quartz
- Choice of high quality carpet and upholstery fabric from extensive range
- Curtains, blinds or sunscreens to all windows and portholes
- Timber-laid galley and wheelhouse floors

### **Power and Drive Systems**

- 5-bladed propellers in nickel aluminum bronze
- Bow thruster (350kgf/771lbf)
- Power-assisted electro-hydraulic steering system with hydraulic back-up
- Electronic engine and gear shift control system
- Dripless shaft seals
- Engine room extractor fan with electronic time delay

### **Electrical System**

24 Volt:

- 2 x heavy duty batteries for engine starting
- 6 x heavy duty auxiliary batteries
- 2 x 60 amp battery charger charges both banks of batteries via an automatic switch charging system
- Remote battery master switches with control switch at main panel
- LED lighting throughout

220/240 Volt:

- 27kW diesel generator in own sound shield with water cooled specially silenced exhaust
- 2 x 63 amp shore support inlet
- Earth leakage safety trip, polarity check system, circuit breaker on all circuits
- Power points in all areas

### **Fuel System**

- Twin fuel tanks (in NS8 marine grade alloy) with interconnection system giving 2420 gal/2907 US gal/11000l
- Fuel fillers on port and starboard side decks

- High capacity duplex fuel filters/water traps with audible and visual fuel contamination warning system
- Remote fuel cocks in cockpit locker

### **Water System**

- 285 gal/342 US gal/1295l plus 45 gal/54 US gal/205l hot water calorifier, heated by engines and 240v immersion heater
- Water level gauge
- Electric freshwater WC system with 132 gal/158 US gal/600l holding tank

### **Air Conditioning**

- 204,000Btu chilled water system with outlets in all accommodation areas and incorporating reverse cycle heating with linked windscreen de-mist system. Suitable for tropical conditions (40°C)

### **Fire Extinguishers**

- Automatic/manual override fire extinguishers in engine room with warning system at both helm positions and incorporating engine air vent closure system
- Hand-operated fire extinguishers in all cabins, galley, crew and lower helm

### **Bilge Pumps**

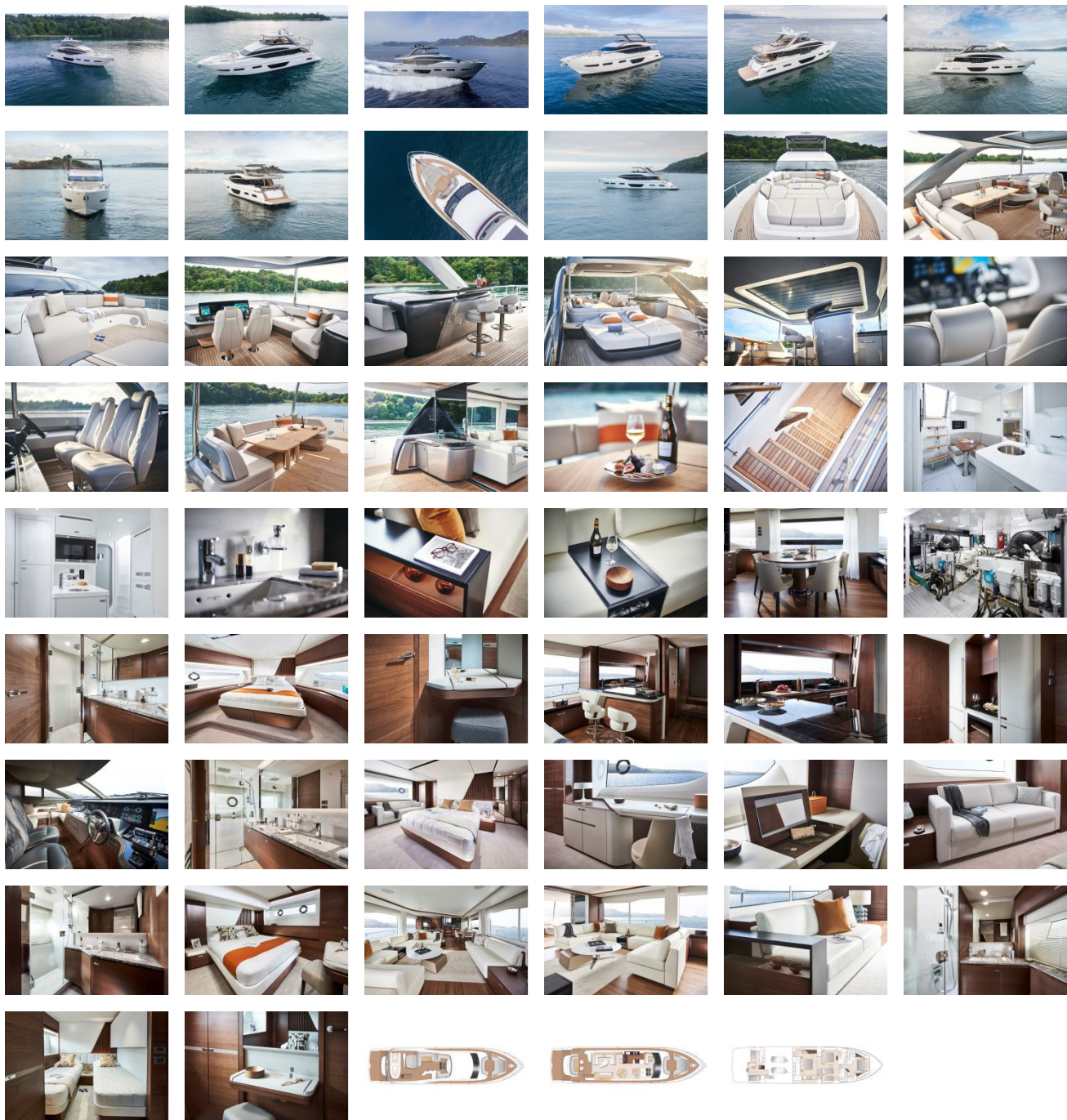
- Automatic electric bilge pumps
- High capacity manual bilge pumps with valve system and suction points in same areas

### **Other Items Supplied as Standard**

- Set of cutlery, crockery and glasses (8)
- Set of towels (8 large, 8 small)
- Ensign staff
- Fenders (8) and warps (4)
- First aid kit
- Set of manuals



GALLERY



**IMS Yachts**  
2525 Marina Bay Drive West Suite 205  
Fort Lauderdale, FL, 33312  
Phone: (954) 374-3434