



**Jefferson Beach Yacht Sales**  
24400 Jefferson Avenue,  
St. Clair Shores, MI 48080  
Phone: 866-490-5297

# Princess Y75

Boat Type: Motor Yacht



## OVERVIEW

The ingenious design of the Y75 Motor Yacht offers efficient, agile cruising, enabling you to plane at lower speeds. Her deck layout provides you with a variety of options to entertain or relax including a walkthrough foredeck with U-shaped seating and sunbathing area. She is also sociable whilst underway with seating either side of the upper helm. The flybridge has space aft for free standing furniture or to fit a crane and store a tender.

Her elegant exterior conceals a voluminous interior. Natural light flows in to her main deck through extended window lines and a unique full-height window on the port side to make the free standing dining area a spectacular place to entertain. Forward on the lower deck, all three guest cabins are en suite whilst a dedicated staircase leads to the owner's stateroom amidships via a private lobby area.

## SPECIFICATIONS

### Basic Information

Manufacturer:	Princess	Boat Type:	Motor Yacht
Model:	Y75	Hull Material:	
Hull Type:		Category:	Power

### Dimensions & Weight

Length:	75.00 ft	Draft - max:	5 ft 8 in - 1.73 meter
LOA:	80 ft 9 in - 24.61 meter	Bridge Clearance:	-
Beam:	18 ft 11 in - 5.77 meter	Dry Weight:	105160 ft
Deadrise Aft:	-		

### Tank Capacities

Fuel Tank:	1585 gallons - 1 tank(s)	Holding Tank:	-
Fresh Water Tank:	356 gallons - 1 tank(s)		

### Accommodations

Total Cabins:	-	Crew Cabins:	-
Total Berths:	-	Crew Berths:	-
Total Sleeps:	-	Crew Sleeps:	-
Total Heads:	-	Crew Heads:	-
Captains Cabin:	No		

## FEATURES

### Flybridge

- Helm position with powered raise/lower console, repeat navigation equipment including radar/ chartplotter and engine instrumentation
- Twin adjustable helm seats
- U-shaped seating area with folding teak table
- L-shaped seat (converts to sunpad)
- Sunpad with storage below
- Radio/MP3 with waterproof speakers
- Wetbar including sink with electric barbecue and drawer refrigerator
- Optional crane (450kg SWL)
- Console and seat covers

### Cockpit

- U-shaped seating with teak folding table
- Twin transom gates leading to bathing platform with electro-hydraulic raise/lower mechanism, foldaway swimming

ladder, hot and cold shower

- Transom seat in teak with storage locker
- Transom doors giving direct access to lazarette and crew area
- Lockable gas strut assisted hatch to engine room
- Life raft storage
- Remote control 4m telescopic passerelle with folding handrail
- Cockpit cover

### **Lower Helm Position**

- Twin helm seats with electric adjustment for helmsman
- L-shaped seat to port
- Helmsman's door to side deck and electric opening window to port
- Full engine instrumentation including fuel gauges, exhaust temperature, fuel contamination alarms, rudder position indicator
- Navigation system including colour radar, GPS and chartplotter (2 displays), VHF/RT, speed and distance log, echo sounder with alarms, autopilot and high speed magnetic compass
- Controls for bow thruster, windscreen wipers, bilge pump and trim tabs (with indicator)
- Intercom to flybridge
- Automatic foghorn with loudhailer
- Chart storage
- 24v and 240v control panel
- Red night lighting
- Toughened glass screen (clear for night vision)

### **Deck Saloon**

- U-shaped seating area with two-seater sofa and coffee table
- Entertainment centre incorporating 55" UHD LED TV on electric raise/lower mechanism and DVD, radio/MP3 system with surround sound system
- Sideboard unit with bottle and glass storage and refrigerator
- Dining area (8 people) with full-height panoramic window

### **Galley**

- 4-zone ceramic hob
- Combination microwave/convection oven with grill
- Twin stainless steel sinks with mixer tap
- Full-height refrigerator/deep freeze
- Ice maker
- Dishwasher
- Storage lockers, cupboards and drawers
- Electrically operated sliding glass partition from aft saloon

### **Owner's Stateroom**

- Large double bed with bedside tables and drawers below
- Dressing area with wardrobes with hanging and drawer storage
- Dressing table with chair
- Sofa
- Built-in safe

- 40" HD LED TV and DVD, radio/MP3 system with surround sound
- En suite bathroom
- Dedicated access with lobby area

#### **Forward Guest Cabin**

- Large double bed with drawers below
- Large wardrobe with shelves
- Dressing table with stool
- Deck hatch
- Radio/MP3
- Ensuite bathroom

#### **Starboard Guest Cabin**

- Large double bed with drawers below (with the option of powered conversion to double)
- Wardrobe with shelves
- Dressing table with stool
- 49" UHD LED TV and DVD, radio/MP3
- Storage lockers
- Bedside tables with storage
- En suite bathroom with day access

#### **Port Guest Cabin**

- Two single beds with drawers below (with the option of powered conversion to double)
- Wardrobe with shelves
- Storage lockers
- Bedside table with storage
- En suite bathroom

#### **Lower Accommodation Lobby**

- The lobby area has a full-height storage cupboard with the option of fitting an additional washer/dryer

#### **Crew Quarters**

- Two single beds, wardrobe and storage lockers
- Bathroom with separate stall shower, electric freshwater toilet and washbasin
- Utility area (optional additional crew cabin)
- A combination washer/dryer is fitted in crew utility space
- Access to engine room

#### **Deck Fittings**

- Teak-laid transom platform, cockpit deck, flybridge, flybridge stairway, side decks and foredeck walkthrough
- Self-stowing 50kg/110lbs Delta anchor with 100m of chain
- Reversible hydraulic-anchor winch with foredeck, main helm and flybridge controls
- Twin electric sternline mooring winches
- Stainless steel cleats, fairleads and handrails
- Foredeck seating and sunbathing area
- Storage lockers for rope, fenders and foredeck sunbed cushions

- Telephone connection point
- Stern docking lights
- LED deck level lighting
- Freshwater deck/anchor wash

### **Accommodation**

- All cabins and bathrooms feature opening portholes and air conditioning outlets
- All cabins feature 220/240v power points
- All mattresses pocket sprung
- All bathrooms feature full shower stalls, electric freshwater toilets, extractor fan and 240v shaver points

### **Interior Finish**

- Furniture in Rovere Oak with satin or high gloss finish. Walnut or Alba Oak available as an option
- Solid surface worktops and floors in all guest bathrooms
- Galley worktops in choice of granite or quartz
- Choice of high quality carpet and upholstery fabric from extensive range
- Curtains, blinds or sunscreens to all windows and portholes
- Timber-laid galley and helm floors

### **Power and Drive Systems**

- 5-bladed propellers in nickel aluminum bronze
- Bow thruster (240kgf/529lbf)
- Power-assisted electro-hydraulic steering system with hydraulic back-up
- Electronic engine and gear shift control system
- Dripless shaft seals
- Engine room extractor fan with electronic time delay

### **Electrical System**

24 Volt:

- 4 x heavy duty batteries for engine starting
- 6 x heavy duty auxiliary batteries
- 2 x 60 amp battery charger charges both banks of batteries via an automatic switch charging system
- Remote battery master switches with control switch at main panel
- LED lighting throughout

220/240 Volt:

- 22.5kW diesel generator in own sound shield with water cooled specially silenced exhaust
- 2 x 63 amp shore support inlet
- Earth leakage safety trip, polarity check system, circuit breaker on all circuits
- Power points in all areas

### **Fuel System**

- Twin fuel tanks (in NS8 marine grade alloy) with interconnection system giving 1320 gal/1585 US gal/6000l capacity
- Fuel fillers on port and starboard side decks

- High capacity duplex fuel filters/water traps with audible and visual fuel contamination warning system
- Remote fuel cocks in cockpit locker

### **Water System**

- 253 gal/304 US gal/1150l plus 44 gal/52 US gal/200l hot water calorifier, heated by engines and 240v immersion heater
- Water level gauge
- Electric freshwater WC system with 99 gal/119 US gal/450l holding tank

### **Air Conditioning**

- 165,000Btu chilled water system with outlets in all accommodation areas and incorporating reverse cycle heating with linked windscreen de-mist system. Suitable for tropical conditions (40°C)

### **Fire Extinguishers**

- Automatic/manual override fire extinguishers in engine room with warning system at both helm positions and incorporating engine air vent closure system
- Hand-operated fire extinguishers in all cabins, galley, crew and lower helm

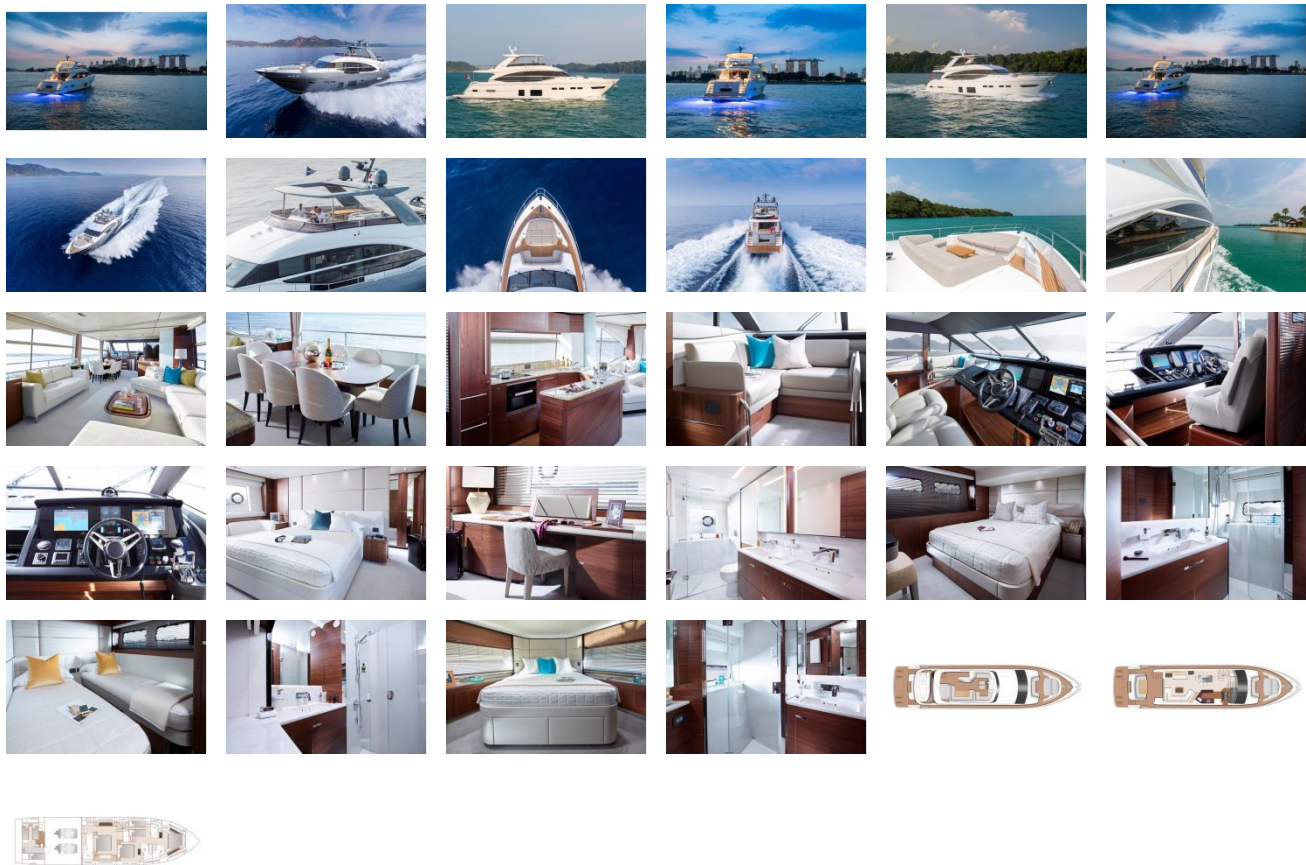
### **Bilge Pumps**

- Automatic electric bilge pumps
- High capacity manual bilge pumps with valve system and suction points in same areas

### **Other Items Supplied as Standard**

- Set of cutlery, crockery and glasses (8)
- Set of towels (8 large, 8 small)
- Ensign staff
- Fenders (8) and warps (4)
- First aid kit
- Set of manuals

GALLERY



**Jefferson Beach Yacht Sales**  
24400 Jefferson Avenue,  
St. Clair Shores, MI 48080  
Phone: 866-490-5297