

**IMS Yachts**

2525 Marina Bay Drive West Suite 205

Fort Lauderdale, FL, 33312

Phone: (954) 374-3434

Princess F70

Boat Type: Flybridge



OVERVIEW

Featuring the very latest in Princess Flybridge design and the new Allure Collection - an optional style pack featuring an array of fixtures, fittings and finishes, the all-new F70 is the flagship of our flybridge range. Her generous, 26.58m² flybridge accommodates a large U-shaped dining area, served by a fully equipped wetbar, aft sunpad and forward seating area adjacent to the helm. The social layout of her main deck features an aft galley arrangement which opens fully to the cockpit and a walkthrough foredeck area with additional sunbathing and seating areas. Out at sea, her performance feels light and responsive all the way up to speeds in excess of 36 knots. Altogether a distinctively Princess experience.

Defined by highly detailed, hand-crafted furniture and upholstery, her interior finishes play with texture and light. Soft suedes, bronze tint mirror, hand stitched detailing and Japanese wall coverings unite in perfect balance for an alluring effect. The full beam master suite has a private access stairway, whilst the forward stateroom boasts a large double bed. Two further guest cabins and an optional crew cabin feature single beds and the option to be converted to double.

SPECIFICATIONS

Basic Information

Manufacturer:	Princess	Boat Type:	Flybridge
Model:	F70	Hull Material:	
Year:	2020	Hull Type:	
Category:	Power		

Dimensions & Weight

Length:	70.00 ft	Draft - max:	5 ft 2 in - 1.58 meter
LOA:	69 ft 9 in - 21.26 meter	Bridge Clearance:	-
Beam:	17 ft 8 in - 5.39 meter	Dry Weight:	82673 ft
Deadrise Aft:	-		

Tank Capacities

Fuel Tank:	1080 gallons - 1 tank(s)	Holding Tank:	-
Fresh Water Tank:	240 gallons - 1 tank(s)		

Accommodations

Total Cabins:	-	Crew Cabins:	-
Total Berths:	-	Crew Berths:	-
Total Sleeps:	-	Crew Sleeps:	-
Total Heads:	-	Crew Heads:	-
Captains Cabin:	No		

FEATURES

Deck Fittings

- Teak-laid transom platform, cockpit deck, flybridge, flybridge stairway and steps to side decks
- Self-stowing 50kg/110lbs Delta anchor with 60m of chain
- Reversible electric anchor winch with foredeck, helm position and flybridge controls
- Stainless steel cleats, fairleads and handrails
- Twin electric-powered sternline mooring winches
- Freshwater deck/anchor wash
- Foredeck seating and sunbathing area
- Storage lockers for fenders and ropes
- LED deck level lighting

Cockpit

- U-shaped seating with folding teak table
- Twin transom gates leading to bathing platform with electro-hydraulic raise/lower mechanism, foldaway swimming ladder, hot and cold shower
- Transom seat with storage locker
- Lockable gas strut assisted hatch to engine room/lazarette

- Access to aft lazarette/optional crew cabin via transom door
- Lifteraft storage locker
- Locker housing 220/240v shore support inlet
- Cockpit cover

Flybridge

- Dual station instrumentation, controls and alarm system including VHF/RT, speed and distance log, echo sounder with alarm and autopilot
- Large U-shaped seating area with teak table
- L-shaped seat (converts to a sunbed)
- Sunpad with storage below
- Twin helm seats with fore and aft adjustment for helmsman
- Wetbar with barbeque, sink and drawer fridge
- Radio/MP3 with waterproof speakers
- Console and seat covers

Lower Helm Position

- Twin helm seats with fore and aft adjustment for helmsman
- Helmsman's door to side deck
- Full engine instrumentation including fuel gauges, exhaust temperature and engine warning system and rudder position indicator
- Navigation system including colour radar, GPS and chartplotter, VHF/RT, speed and distance log, echo sounder with alarm, autopilot and high speed magnetic compass
- Controls for bow thruster, windscreen wipers, bilge pump and trim tabs (with indicators)
- 24v and 240v control panel
- 12v outlet
- Red night lighting

Deck Saloon

- Stainless steel framed sliding doors to aft cockpit with integrated opening window aft of galley
- U-shaped seating area with coffee table
- Two-seater sofa
- Entertainment centre incorporating 49" UHD LED TV on electric raise/lower mechanism and DVD, radio/MP3 system with surround sound system
- L-shaped sofa opposite helm area
- Sideboard unit with bottle and glass storage, refrigerator and icemaker
- Aft dining area
- Separate access to Master Stateroom

Galley

- 4-zone ceramic hob
- Hob extractor
- Combination microwave/convection oven with grill
- Twin stainless steel sink with mixer tap
- Full-height fridge/freezer
- Dishwasher
- Storage cupboards, drawers and lockers

Accommodation

- All cabins and bathrooms feature opening portholes
- All cabins feature 220/240v power points
- All mattresses pocket sprung (excluding crew)
- All bathrooms feature full shower stalls, electric freshwater toilets, extractor fan and 240v shaver points
- A combination washer/dryer is fitted in the stateroom lobby

Owner's Stateroom

- Large double bed with drawers below
- Twin wardrobes with shelves
- Dressing table
- Sofa
- 49" UHD LED TV and DVD, radio/MP3 system with surround sound
- Storage lockers and drawers
- En suite bathroom

Forward Guest Cabin

- Large double bed with drawers below
- Wardrobe with shelves
- Vanity unit
- Storage lockers and drawers
- Deck hatch
- En suite bathroom

Starboard Guest Cabin

- Two single beds with drawers below (with option of sliding berths)
- Wardrobe with shelves
- Storage lockers and drawers
- En suite bathroom (with day access)

Port Guest Cabin

- Two single beds with drawers below (with option of sliding berths)
- Wardrobe with shelves
- Storage lockers and drawers

Wheelhouse

- Helm seat with electric adjustment
- U-shaped seating with table to port

- Helmsman's door to side deck and electric opening window to port
- Full engine instrumentation including fuel gauges, exhaust temperature, fuel contamination alarms, rudder position indicator
- Navigation system including colour radar, GPS and chartplotter (3 displays), VHF/RT, speed and distance log, echo sounder with alarm, autopilot and high speed magnetic compass
- Controls for bow thruster, windscreen wipers, bilge pump and trim tabs (with indicator)
- CCTV linked into display at lower helm
- Intercom to flybridge and all cabins
- Automatic foghorn with loudhailer
- Chart table with light and chart storage
- 24v and 240v control panel
- Red night lighting
- Toughened glass screen (clear for night vision)

Optional Aft Cabin

- Two single berths with storage below
- Wardrobe with shelf
- En suite bathroom with stall shower

Interior Finish

- Furniture in Rovere Oak with satin or high gloss finish. Walnut or Alba Oak available as an option
- Solid surface worktops and tiled floors in all guest bathrooms
- Solid surface worktop and timber-laid floor in galley
- Choice of high quality carpet and upholstery fabric from extensive range
- Blinds or sunscreens to all windows and portholes

Power and Drive Systems

- 5-bladed propellers in nickel aluminum bronze
- Bow thruster (170kgf/375lbf)
- Power-assisted electro-hydraulic steering system with hydraulic back-up
- Electronic engine and gear shift controls
- Electronic engine controls
- Dripless shaft seals
- Engine room extractor fan with electronic time delay

Electrical System

24 Volt:

- 4 x heavy duty batteries for engine starting
- 4 x heavy duty auxiliary batteries
- 80 amp battery charger charges both banks of batteries via an automatic switch charging system
- Remote battery master switches with control switch at main panel
- LED lighting throughout

220/240 Volt:

- 11kW diesel generator in own sound shield with water cooled specially silenced exhaust
- 63 amp shore support inlet

- Earth leakage safety trip, polarity check system, circuit breaker on all circuits
- Power points in all areas

Fuel System

- Fuel tanks (in NS8 marine grade alloy) with interconnection system giving 900 gal/1080 US gal/4100l capacity
- Fuel fillers on port and starboard side decks
- High capacity duplex fuel filters/water traps with audible and visual fuel contamination warning system
- Remote fuel isolation controls in cockpit locker

Water System

- 184 gal/221 US gal/836l plus 16 gal/19 US gal/73l hot water calorifier, heated by engines and 240v immersion heater
- Water level gauge
- Deck filler
- Electric freshwater WC system with 60 gal/72 US gal/272l holding tank

Fire Extinguishers

- Automatic/manual override fire extinguishers in engine room with warning system at both helm positions
- Hand-operated fire extinguishers in all cabins, galley and lower helm (6)

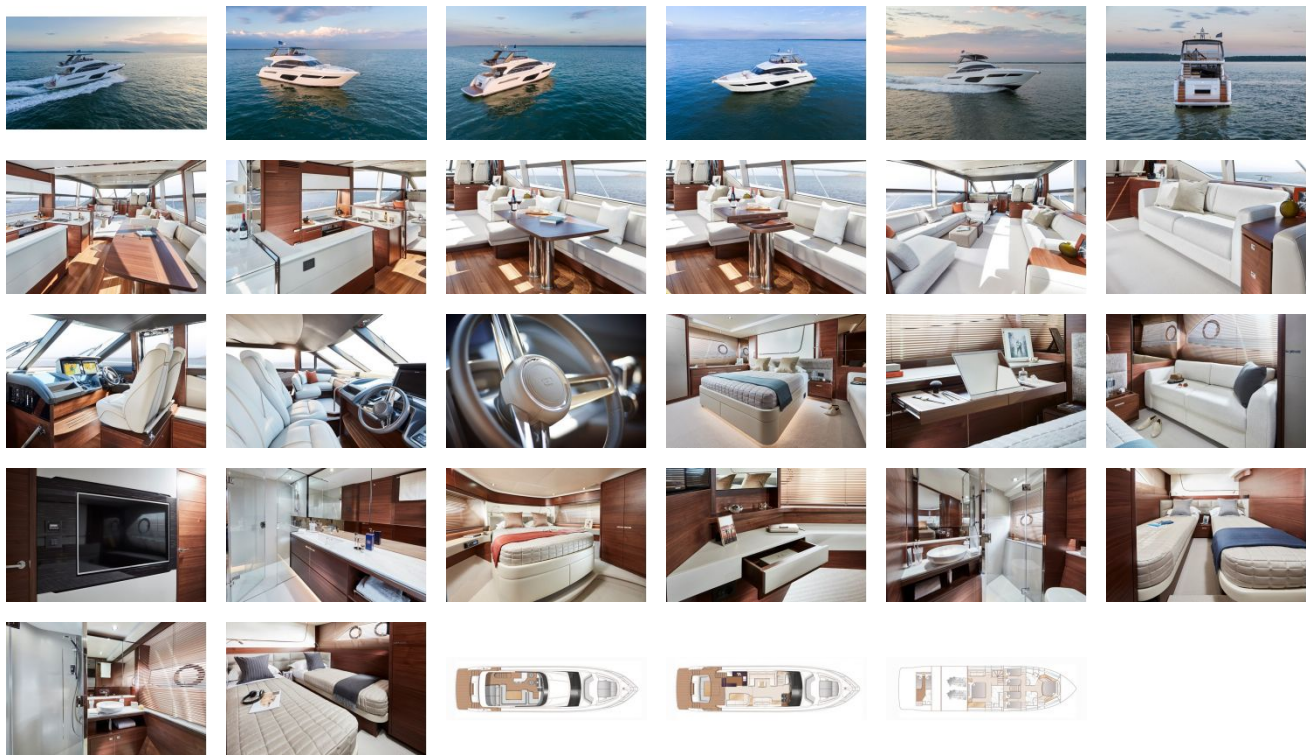
Bilge Pumps

- Automatic electric bilge pumps (6)
- High capacity manual bilge pump with valve system and suction points in same areas

Other Items Supplied as Standard

- Quilted bedspreads supplied to all cabins (except optional crew)
- Ensign staff
- Fenders (6) and wraps (4)
- First aid kit
- Set of manuals
- Tool kit

GALLERY



IMS Yachts
2525 Marina Bay Drive West Suite 205
Fort Lauderdale, FL, 33312
Phone: (954) 374-3434