

**IMS Yachts**

2525 Marina Bay Drive West Suite 205

Fort Lauderdale, FL, 33312

Phone: (954) 374-3434

# Princess F62

Boat Type: Flybridge



## OVERVIEW

The all-new F62 encapsulates our uncompromising design ethos and benefits from the latest infusion technology which enables the inclusion of features normally exclusive to much larger craft. Her flybridge inspires relaxation with a large dining area a sunpad aft and a unique circular forward seating area that can be converted into an additional sunpad. Boasting a walkthrough foredeck entertaining space and a hydraulic bathing platform as standard she's a pioneering yacht that continues to set the standard.

Her cavernous main deck saloon connects to the world outside through full length side windows, while her sociable galley is positioned aft and opens to the cockpit. The helm position is located to starboard with additional forward facing guest seating opposite. Below deck six guests enjoy three beautifully appointed en suite cabins all bathed in natural light from elegant hull glazing, with the option of a further twin cabin aft for occasional guests or crew.

## SPECIFICATIONS

### Basic Information

Manufacturer:	Princess	Boat Type:	Flybridge
Model:	F62	Hull Material:	
Year:	2020	Hull Type:	
Category:	Power		

### Dimensions & Weight

Length:	62.00 ft	Draft - max:	4 ft 10 in - 1.47 meter
LOA:	63 ft 5 in - 19.33 meter	Bridge Clearance:	-
Beam:	16 ft 6 in - 5.03 meter	Dry Weight:	64595 ft
Deadrise Aft:	-		

### Tank Capacities

Fuel Tank:	898 gallons - 1 tank(s)	Holding Tank:	-
Fresh Water Tank:	204 gallons - 1 tank(s)		

### Accommodations

Total Cabins:	-	Crew Cabins:	-
Total Berths:	-	Crew Berths:	-
Total Sleeps:	-	Crew Sleeps:	-
Total Heads:	-	Crew Heads:	-
Captains Cabin:	No		

## FEATURES

### Deck Fittings

- Teak-laid transom platform, cockpit deck, flybridge stairway and steps to side decks
- Self-stowing 32kg/70lbs Delta anchor with 40m of chain
- Reversible electric anchor winch with foredeck, helm position and flybridge controls
- Stainless steel cleats, fairleads and handrails
- Freshwater deck/anchor wash
- Foredeck seating and sunbathing area
- Storage lockers for fenders and ropes
- LED deck level lighting

### Cockpit

- U-shaped seating with folding teak table
- Twin transom gates leading to bathing platform with electro-hydraulic raise/lower mechanism, foldaway swimming ladder, hot and cold shower
- Transom seat with storage locker
- Lockable gas strut assisted hatches to engine room, lazarette/optional crew cabin
- Locker housing 220/240v shore support inlet

- Cockpit cover

### **Flybridge**

- Dual station instrumentation, controls and alarm system including VHF/RT, speed and distance log, echo sounder with alarm and autopilot
- U-shaped seating area with folding teak table
- Forward circular seating area with teak table
- Sunpad aft with sliding headrest and storage below
- Radio/MP3 with waterproof speakers
- Wetbar including sink with electric barbeque and top loading coolbox
- Lifter storage
- Console and seat covers

### **Lower Helm Position**

- Twin helm seats with fore and aft adjustment for helmsman
- Helmsman's door to side deck
- Full engine instrumentation including fuel gauges, exhaust temperature and engine warning system and rudder position indicator
- Navigation system including colour radar, GPS and chartplotter, VHF/RT, speed and distance log, echo sounder with alarm, autopilot and high speed magnetic compass
- Controls for bow thruster, windscreen wipers, bilge pump and trim tabs (with indicators)
- 24v and 240v control panel
- Red night lighting

### **Deck Saloon**

- Stainless steel framed sliding doors to aft cockpit with integrated opening window aft of galley
- U-shaped seating area with coffee table
- Two-seater sofa
- Entertainment centre incorporating 49" UHD LED TV on electric raise/lower mechanism and DVD, radio/MP3 system with surround sound system
- Sideboard unit with bottle and glass storage, refrigerator and icemaker
- Aft dining area

### **Galley**

- 4-zone ceramic hob
- Hob extractor
- Combination microwave/convection oven with grill
- Stainless steel sink with mixer tap
- Full-height fridge/freezer
- Storage cupboards, drawers and lockers

### **Accommodation**

- All cabins and bathrooms feature opening portholes
- All cabins feature 220/240v power points
- All mattresses pocket sprung (excluding crew)
- All bathrooms feature full shower stalls, electric freshwater toilets, extractor fan and 240v shaver points

### **Owner's Stateroom**

- Large double bed with drawers below
- Twin wardrobes with shelves
- Dressing table
- Occasional table with fore and aft seating
- 49" UHD LED TV and DVD, radio/MP3
- Storage lockers and drawers
- En suite bathroom

### **Forward Guest Cabin**

- Large double bed with drawers below
- Wardrobe with shelves
- Vanity unit
- Storage lockers and drawers
- Deck hatch
- En suite bathroom with day access

### **Starboard Guest Cabin**

- Two single beds with drawers below (with option of sliding berths)
- Wardrobe with shelves
- Storage lockers and drawers
- En suite bathroom

### **Optional Aft Cabin**

- Two single berths with storage below
- Wardrobe with shelf
- En suite bathroom with stall shower

### **Port Guest Cabin**

- Two single beds with drawers below (with option of sliding berths)
- Wardrobe with shelves
- Storage lockers and drawers

### **Interior Finish**

- Furniture in Rovere Oak with satin or high gloss finish. Walnut or Alba Oak available as an option
- Solid surface worktops and tiled floors in all guest bathrooms
- Solid surface worktop and timber-laid floor in galley
- Choice of high quality carpet and upholstery fabric from extensive range
- Blinds or suncreens to all windows and portholes
- Optional crew cabin fitted with non slip safety flooring

### **Power and Drive Systems**

- 5-bladed propellers in nickel aluminum bronze
- Bow thruster (130kgf/287lbf)
- Power-assisted electro-hydraulic steering system with hydraulic back-up
- Electronic engine and gear shift controls
- Electronic engine controls
- Dripless shaft seals
- Engine room extractor fan with electronic time delay

### **Electrical System**

24 Volt:

- 4 x heavy duty batteries for engine starting
- 4 x heavy duty auxiliary batteries
- 60 amp battery charger charges both banks of batteries via an automatic switch charging system
- Remote battery master switches with control switch at main panel
- LED lighting throughout

220/240 Volt:

- 11kW diesel generator in own sound shield with water cooled specially silenced exhaust
- 50 amp shore support inlet
- Earth leakage safety trip, polarity check system, circuit breaker on all circuits
- Power points in all areas

### **Fuel System**

- Twin fuel tanks (in NS8 marine grade alloy) with interconnection system giving 748 gal/898 US gal/3400l capacity
- Fuel fillers on port and starboard side decks
- High capacity duplex fuel filters/water traps with audible and visual fuel contamination warning system
- Remote fuel isolation controls in cockpit locker

### **Water System**

- 154 gal/185 US gal/700l plus 16 gal/19 US gal/73l hot water calorifier, heated by engines and 240v immersion heater
- Water level gauge
- Deck filler
- Electric freshwater WC system with 75 gal/90 US gal/340l holding tank

### **Fire Extinguishers**

- Automatic/manual override fire extinguishers in engine room with warning system at both helm positions
- Hand-operated fire extinguishers in all cabins, galley and lower helm (5)

### **Bilge Pumps**

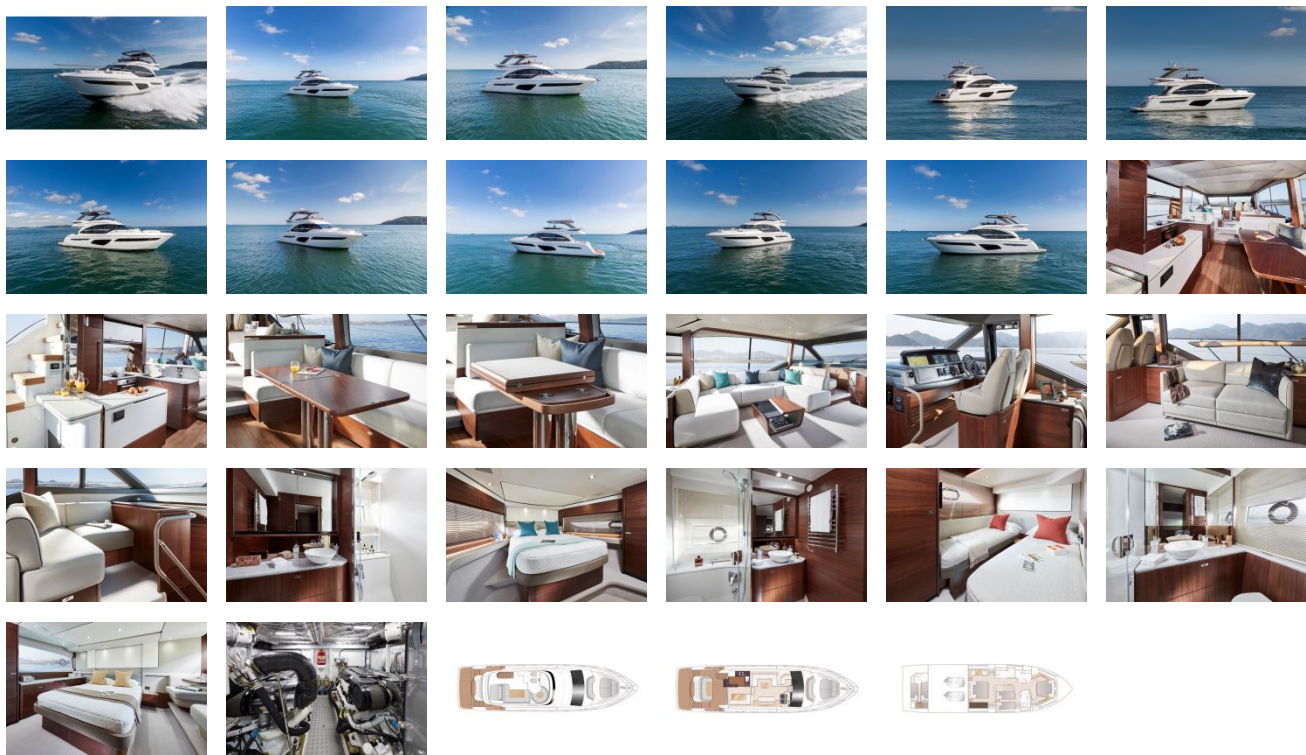
- Automatic electric bilge pumps (6)
- High capacity manual bilge pump with valve system and suction points in same areas

### **Other Items Supplied as Standard**

- Quilted bedspreads supplied to all cabins (except optional crew)

- Ensign staff
- Fenders (6) and wraps (4)
- First aid kit
- Set of manuals
- Tool kit

GALLERY



**IMS Yachts**  
2525 Marina Bay Drive West Suite 205  
Fort Lauderdale, FL, 33312  
Phone: (954) 374-3434