



Jefferson Beach Yacht Sales
24400 Jefferson Avenue,
St. Clair Shores, MI 48080
Phone: 866-490-5297

Princess F55

Boat Type: Flybridge



OVERVIEW

From the moment you step aboard her teak decking, luxurious space is a constant companion. Her 17.80m² flybridge enjoys a convertible sunbed, twin helm seats, a wetbar and ergonomic dining areas. Vast panoramic saloon windows and signature wrap around front screens offer uninterrupted vistas from the main deck whilst expansive hull windows generously flood her accommodation areas with light. This oasis of calm can then be propelled to a top speed approaching 33 knots, and all with nimble composure. Magnificent performance and uncompromising comfort in equal measure.

The F55 interior has an architectural presence and elegantly uses contrasting surfaces whilst retaining the elegance that Princess interiors are renowned for. Her spacious saloon features a U-shaped sofa opposite a twin sofa with the option of a folding leaf dining or coffee table in between. Below, both the master stateroom and forward cabin feature large double beds whilst the starboard guest cabin with two single beds can also be converted in to a double. There is also the option for a single bed aft cabin. All are en suite of course.

SPECIFICATIONS

Basic Information

Manufacturer:	Princess	Boat Type:	Flybridge
Model:	F55	Hull Material:	
Hull Type:		Category:	Power

Dimensions & Weight

Length:	55.00 ft	Draft - max:	4 ft 10 in - 1.47 meter
LOA:	57 ft 9 in - 17.6 meter	Bridge Clearance:	-
Beam:	16 ft - 4.88 meter	Dry Weight:	54234 ft
Deadrise Aft:	-		

Tank Capacities

Fuel Tank:	726 gallons - 1 tank(s)	Holding Tank:	-
Fresh Water Tank:	161 gallons - 1 tank(s)		

Accommodations

Total Cabins:	-	Crew Cabins:	-
Total Berths:	-	Crew Berths:	-
Total Sleeps:	-	Crew Sleeps:	-
Total Heads:	-	Crew Heads:	-
Captains Cabin:	No		

FEATURES

Deck Fittings

- Teak-laid transom platform, cockpit deck, flybridge stairway and steps to side decks
- Self-stowing 25kg/55lbs Delta anchor with 40m of chain
- Reversible electric anchor winch with foredeck, helm position and flybridge controls
- Stainless steel cleats, fairleads and handrails
- Freshwater deck/anchor wash
- Foredeck seating and sunbathing area
- Storage lockers for fenders and ropes
- LED deck level lighting

Cockpit

- U-shaped seating with folding teak table
- Twin transom gates leading to bathing platform (with optional electro-hydraulic raise/lower mechanism and dinghy chock system)
- Transom bathing platform with foldaway swimming ladder and hot and cold shower
- Lockable gas strut assisted hatches to engine room, lazarette/optional crew cabin
- Locker housing 220/240v shore support inlet
- Cockpit cover

Flybridge

- Dual station instrumentation, controls and alarm system including VHF/RT, speed and distance log, echo sounder with alarm and autopilot
- Large U-shaped seating area with folding teak table
- L-shaped seat (converts to a sunbed)
- Twin helm seats with fore and aft adjustment for helmsman
- Wetbar with sink, storage and optional barbeque
- Refrigerated top loading coolbox
- Radio/MP3 with waterproof speakers
- Liferaft storage
- Console and seat covers

Lower Helm Position

- Twin helm seats with fore and aft adjustment for helmsman
- Electric opening window
- Full engine instrumentation including fuel gauges, exhaust temperature and engine warning system and rudder position indicator
- Navigation system including VHF/RT, speed and distance log, echo sounder with alarm, autopilot and high speed magnetic compass
- Controls for joystick, bow thruster, windscreen wipers, bilge pump and trim tabs with indicators
- 24v and 240v control panel
- Red night lighting

Deck Saloon

- Stainless steel framed sliding doors to aft cockpit with integrated opening window aft of galley
- U-shaped sofa with folding dining table or coffee table
- Two-seater sofa
- 49" UHD LED TV with electric raise/lower mechanism
- Stereo radio/DVD/MP3 player
- Sideboard unit with bottle and glass storage and refrigerator
- Crockery storage drawer

Galley

- 4-zone ceramic hob
- Hob extractor
- Combination microwave/convection oven with grill
- Stainless steel sink with mixer tap
- Full-height fridge/freezer
- Storage cupboards, drawers and lockers

Accommodation

- All cabins and bathrooms feature opening portholes
- All cabins feature 220/240v power points
- All mattresses pocket sprung (excluding crew)
- All bathrooms feature full shower stalls, electric freshwater toilets, extractor fan and 240v shaver points

Owner's Stateroom

- Large double bed with drawers below
- Wardrobe with shelves
- Dressing table
- Radio/MP3
- Storage lockers and drawers
- En suite bathroom

Forward Stateroom

- Large double bed with drawers below
- Wardrobe with shelves
- Vanity unit
- Storage lockers
- Deck hatch
- En suite bathroom with day access

Starboard Guest Cabin

- Two single beds with drawers below (with option of sliding berths)
- Wardrobe with shelves
- Storage lockers and drawers

Optional Aft Cabin

- Single bed with storage below
- Wardrobe with shelf
- En suite bathroom with stall shower

Interior Finish

- Furniture in Rovere Oak with satin or high gloss finish. Walnut or Alba Oak available as an option
- Solid surface worktops and tiled floors in all guest bathrooms
- Solid surface worktop and timber-laid floor in galley
- Choice of high quality carpet and upholstery fabric from extensive range
- Blinds or sunscreens to all windows and portholes
- Optional crew cabin fitted with non slip safety flooring

Power and Drive Systems

- 5-bladed propellers in nickel aluminum bronze
- Bow thruster (130kgf/287lbf)
- Power-assisted electro-hydraulic steering system with hydraulic back-up
- Electronic engine and gear shift controls
- Electronic engine controls
- Dripless shaft seals
- Engine room extractor fan with electronic time delay

Electrical System

24 Volt:

- 4 x heavy duty batteries for engine starting

- 4 x heavy duty auxiliary batteries
- 60 amp battery charger charges both banks of batteries via an automatic switch charging system
- Remote battery master switches with control switch at main panel
- LED lighting throughout

220/240 Volt:

- 9.5kW diesel generator in own sound shield with water cooled specially silenced exhaust
- 50 amp shore support inlet
- Earth leakage safety trip, polarity check system, circuit breaker on all circuits
- Power points in all areas

Fuel System

- Twin fuel tanks (in NS8 marine grade alloy) with interconnection system giving 605 gal/726 US gal/2750l capacity
- Fuel fillers on port and starboard side decks
- High capacity duplex fuel filters/water traps with audible and visual fuel contamination warning system
- Remote fuel isolation controls in cockpit locker

Water System

- 118 gal/141 US gal/535l plus 16 gal/19 US gal/73l hot water calorifier, heated by engines and 240v immersion heater
- Water level gauge
- Deck filler
- Electric freshwater WC system with 68 gal/83 US gal/315l holding tank

Fire Extinguishers

- Automatic/manual override fire extinguishers in engine room with warning system at both helm positions
- Hand-operated fire extinguishers in all cabins, galley and lower helm (5)

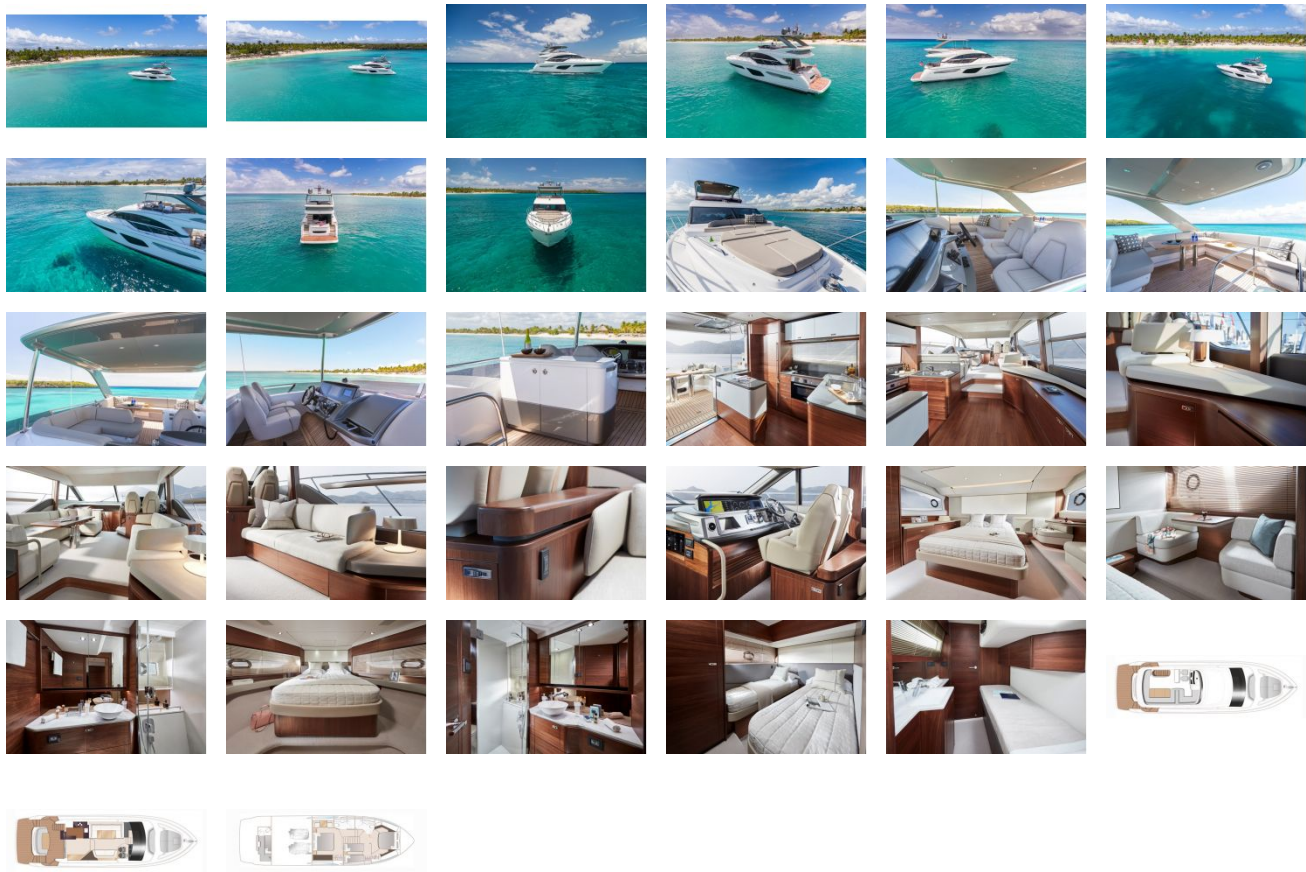
Bilge Pumps

- Automatic electric bilge pumps (5)
- High capacity manual bilge pump with valve system and suction points in same areas

Other Items Supplied as Standard

- Quilted bedspreads supplied to all cabins (except optional crew)
- Ensign staff
- Fenders (6) and wraps (4)
- First aid kit
- Set of manuals
- Tool kit

GALLERY



Jefferson Beach Yacht Sales
24400 Jefferson Avenue,
St. Clair Shores, MI 48080
Phone: 866-490-5297