



**Jefferson Beach Yacht Sales**  
24400 Jefferson Avenue,  
St. Clair Shores, MI 48080  
Phone: 866-490-5297

# Princess F49

Boat Type: Flybridge



## OVERVIEW

Cutting through the waves at speeds up to 35 knots or cruising at a highly economical 30 knots, the F49 is a sublimely enjoyable experience. She combines the latest IPS pod drive system with a modified deep-V hull to provide ease of handling and manoeuvrability. Her social flybridge arrangement enjoys a twin helm seat, convertible L-shaped sofa and generous seating aft. The spacious deck saloon comes alive with light from the panoramic windows and has an ingenious aft-galley layout which can be fitted with a full-height fridge/ freezer.

Below deck, her attentively-designed accommodation awaits. The beautifully-appointed full beam owner's stateroom has an en suite bathroom, whilst a forward guest cabin, with the option of scissor berths and a generous two berth starboard cabin complete her spacious layout. Quite simply, the F49 is in a class of her own.

## SPECIFICATIONS

### Basic Information

Manufacturer:	Princess	Boat Type:	Flybridge
Model:	F49	Hull Material:	
Hull Type:		Category:	Power

### Dimensions & Weight

Length:	49.00 ft	Draft - max:	4 ft 1 in - 1.24 meter
LOA:	51 ft - 15.54 meter	Bridge Clearance:	-
Beam:	14 ft 3 in - 4.34 meter	Dry Weight:	42330 ft
Deadrise Aft:	-		

### Tank Capacities

Fuel Tank:	448 gallons - 1 tank(s)	Holding Tank:	-
Fresh Water Tank:	121 gallons - 1 tank(s)		

### Accommodations

Total Cabins:	-	Crew Cabins:	-
Total Berths:	-	Crew Berths:	-
Total Sleeps:	-	Crew Sleeps:	-
Total Heads:	-	Crew Heads:	-
Captains Cabin:	No		

## FEATURES

### Deck Fittings

- Teak-laid transom platform, cockpit deck, flybridge stairway and steps to side decks
- Self-stowing 20kg/44lbs Delta anchor with 40m of chain
- Reversible electric anchor winch with foredeck, helm position and flybridge controls
- Stainless steel cleats, fairleads and handrails
- Foredeck sunbathing area
- Storage lockers for fenders and ropes
- LED deck level lighting

### Cockpit

- U-shaped seating with folding teak table
- Twin transom gates leading to bathing platform (with electro-hydraulic raise/lower mechanism and dinghy chock system)
- Transom bathing platform with foldaway swimming ladder and hot and cold shower
- Lockable gas strut assisted hatch to engine room/ lazarette
- Liferaft storage locker
- Locker housing 220/240v shore support inlet
- Cockpit cover

## **Flybridge**

- Dual station instrumentation, controls and alarm system including VHF/RT, speed and distance log, echo sounder with alarm and autopilot
- Large U-shaped seating area with folding teak table
- L-shaped seat (converts to a sunbed)
- Twin helm seats with fore and aft adjustment for helmsman
- Optional wetbar with barbeque, sink and storage
- Waterproof speakers linked to saloon stereo
- Console and seat covers

## **Lower Helm Position**

- Twin helm seats with fore and aft adjustment for helmsman
- Electric opening window
- Full engine instrumentation including fuel gauges, exhaust temperature and engine warning system and rudder position indicator
- Navigation system including VHF/RT, speed and distance log, echo sounder with alarm, autopilot and high speed magnetic compass
- Controls for joystick, bow thruster, windscreen wipers, bilge pump and trim tabs with indicators
- 24v and 240v control panel
- Red night lighting

## **Deck Saloon**

- Triple opening stainless steel framed sliding doors to aft cockpit
- U-shaped sofa with dining table
- Two-seater sofa
- Optional TV on electric raise/lower mechanism
- Stereo radio/DVD/MP3 player
- 

## **Galley**

- 3-zone ceramic hob
- Hob extractor
- Combination microwave/convection oven with grill
- Stainless steel sink with mixer tap
- Refrigerator with freezer compartment
- Sideboard with storage, refrigerator and provision for optional icemaker
- Full-height larder unit (optional full-height fridge/freezer)
- Storage cupboards, drawers and lockers

## **Accommodation**

- All cabins and bathrooms feature opening portholes
- All cabins feature 220/240v power points
- All mattresses pocket sprung
- All bathrooms feature full shower stalls, electric freshwater toilets, extractor fan and 240v shaver points
- Main companionway has storage space below with option for washer/dryer

## **Owner's Stateroom**

- Large double bed with drawers below
- Wardrobe with shelves
- Dressing table
- Sofa
- Storage lockers and drawers
- En suite bathroom

#### **Forward Guest Cabin**

- Large double bed with drawers below (option of scissor berths)
- Wardrobe with shelves
- Vanity unit
- Storage lockers and drawers
- Deck hatch with skylight and blind
- En suite bathroom with day access

#### **Starboard Guest Cabin**

- Two single beds
- Wardrobe with shelves
- Storage lockers

#### **Interior Finish**

- Furniture in Rovere Oak with satin or high gloss finish. Walnut or Alba Oak available as an option
- Solid surface worktops and tiled floors in all guest bathrooms
- Solid surface worktop and timber-laid floor in galley
- Choice of high quality carpet and upholstery fabric from extensive range
- Blinds or sunscreens to all windows and portholes

#### **Power and Drive Systems**

- Twin Volvo IPS-550 with joystick control
- Power-assisted electro-hydraulic steering system with hydraulic back-up
- Electronic engine controls
- Volvo active corrosion protection system
- Engine room extractor fan with electronic time delay

#### **Electrical System**

24 Volt:

- 4 x heavy duty batteries for engine starting
- 4 x heavy duty auxiliary batteries
- 40 amp battery charger charges both banks of batteries via an automatic switch charging system
- Remote battery master switches with control switch at main panel
- LED lighting throughout

220/240 Volt:

- 4kW diesel generator in own sound shield with water cooled specially silenced exhaust
- 50 amp shore support inlet

- Earth leakage safety trip, polarity check system, circuit breaker on all circuits
- Power points in all areas

### **Fuel System**

- Twin fuel tanks (in NS8 marine grade alloy) with interconnection system giving 407 gal/488 US gal/1850l capacity
- Fuel fillers on port and starboard side decks
- High capacity duplex fuel filters/water traps with audible and visual fuel contamination warning system
- Remote fuel isolation controls in cockpit locker

### **Water System**

- 90 gal/108 US gal/410l plus 11 gal/13 US gal/50l hot water calorifier, heated by engines and 240v immersion heater
- Water level gauge
- Deck filler
- Electric freshwater WC system with 33 gal/40 US gal/150l holding tank

### **Fire Extinguishers**

- Automatic/manual override fire extinguishers in engine room with warning system at both helm positions
- Hand-operated fire extinguishers in all cabins, galley and lower helm (5)

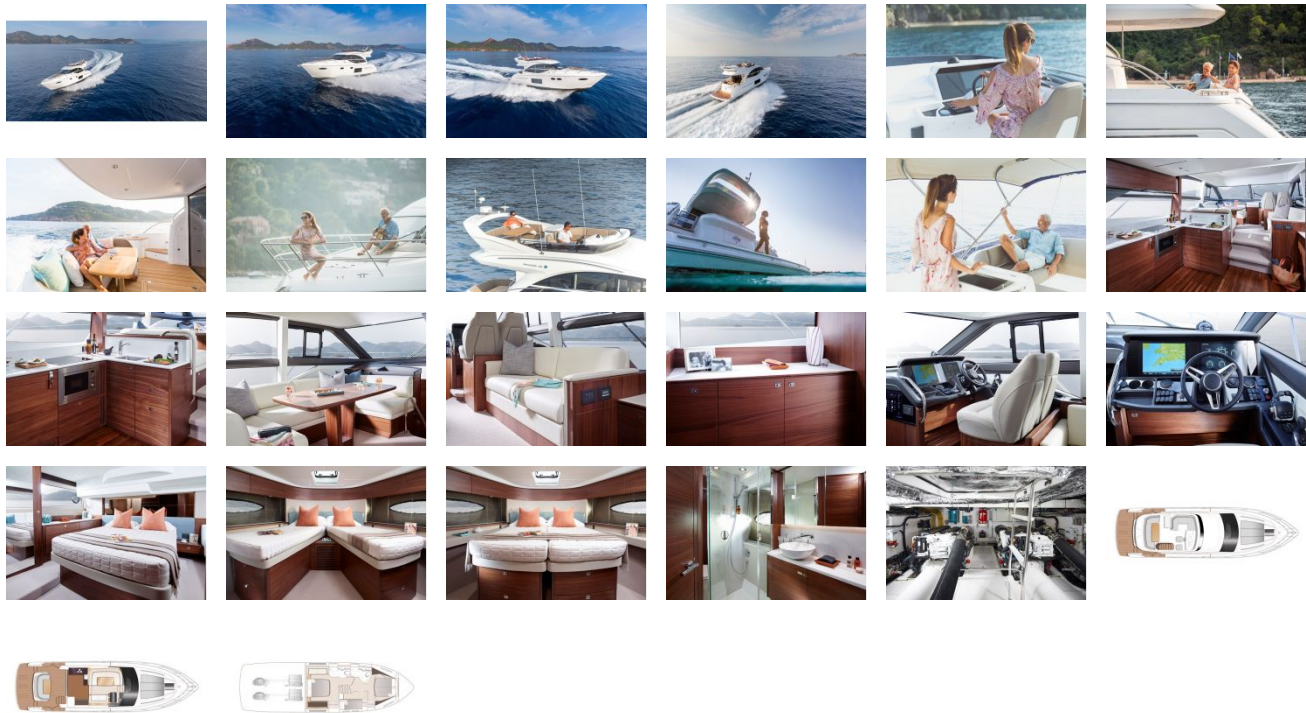
### **Bilge Pumps**

- Automatic electric bilge pumps (4)
- High capacity manual bilge pump with valve system and suction points in same areas

### **Other Items Supplied as Standard**

- Quilted bedspreads supplied to all cabins
- Ensign staff
- Fenders (4) and wraps (4)
- First aid kit
- Set of manuals
- Tool kit

GALLERY



**Jefferson Beach Yacht Sales**  
24400 Jefferson Avenue,  
St. Clair Shores, MI 48080  
Phone: 866-490-5297