



Formula Boats Northeast
692 S Wellwood Ave
Lindenhurst, NY 11757 US
Phone: 631 574-8811

Formula 240 Bowrider

Boat Type: Bowrider



OVERVIEW

From stem to stern, everything about the Formula Bowrider series is designed to meet your needs and maximize your fun and relaxation on the water. This is where excellence meets sophistication, and superiority meets authenticity. The 240 BR is an upscale sport boat, one that combines Formula prestige with your personal touch.

SPECIFICATIONS

Basic Information

Manufacturer:	Formula	Boat Type:	Bowrider
Model:	240 Bowrider	Hull Material:	Fiberglass
Year:	2018	Hull Type:	Deep Vee
Category:	Power		

Dimensions & Weight

Length:	24.00 ft	Draft - max:	3 ft - 0.91 meter
LOA:	25 ft 4 in - 7.72 meter	Bridge Clearance:	7 ft 8 in - 2.34 meter
Beam:	8 ft 6 in - 2.59 meter	Dry Weight:	5000 ft
Deadrise Aft:	20.00 °		

Tank Capacities

Fuel Tank:	55 gallons - 1 tank(s)	Holding Tank:	-
Fresh Water Tank:	10 gallons - 1 tank(s)		

Accommodations

Total Cabins:	-	Crew Cabins:	-
Total Berths:	-	Crew Berths:	-
Total Sleeps:	-	Crew Sleeps:	-
Total Heads:	-	Crew Heads:	-
Captains Cabin:	No		

FEATURES

240 Bowrider Standard Equipment

240 BOWRIDER EXTERIOR

- NMMA/CE Certification
- Transferable 5-Year Formula Guard® Limited Protection Plan w/10-year Structural Warranty (USA only)
- Ashland Maxguard™ LE gelcoat
- Standard graphic in A, B or C w/Axalta™ Chroma Premier® basecoat & Imron® Elite clearcoat
- Pressure-treated Perma Panel™ structural hull matrix w/foam-filled hull cavities
- Chemically bonded & thru-bolted deck-to-hull joint
- Heavy-duty PVC gunwale w/stainless insert
- Concealed fiberglass anchor locker
- Stainless hardware & 316L welded rails
- Stainless Formula logo-cast cleats (6), fuel fill & polished engine grilles
- Tinted, tempered curved-glass windshield w/polished stainless top frame & center walk-thru
- Electric horn
- 316L transom grab rail w/tow eye
- Clarion® waterproof transom-mounted stereo control
- Integrated swim platform w/concealed stainless swim ladder & swim platform boarding rail

240 BOWRIDER COCKPIT

- Continuous molded cockpit liner
- Molded fiberglass dash in Charcoal or Mocha w/high-gloss black & dark woodgrain finish panels, Ritchie® compass, digital depth sounder, illuminated waterproof accessory rocker switches w/E-T-A® circuit breakers, digital illuminated instrumentation w/chrome bezels, auxiliary 12V outlet, dual USB charging port, smartphone dash pocket w/iPod™/MP3 port & tilt wheel in leather wrapped stainless
- Side-mount shift/throttle control w/trim switch

- Mercury Marine® Active Trim system (Merc engines only)
- Bennett tab switches w/indicators
- Safety ignition tether
- Mercury DTS control system w/SmartTow & SmartCraft™, Volvo EVC system or Ilmor electronic shift & throttle
- Clarion AM/FM stereo w/iPod/USB port, Bluetooth, waterproof dash-mounted control, six 61 /2? speakers w/400W amplification, smartphone dash pocket & auxiliary 12V outlet
- 5 dual USB charging ports – 2 in aft cockpit, 2 in bow & 1 at sunpad
- 15 polished stainless drink holders
- Cockpit/swim platform blue/white LED courtesy lights
- Fire extinguisher
- Weather-resistant cockpit seating featuring PreFixx® coating, Tenara® element-resistant thread, DriFast® foam & StarLite® XL synthetic marine panel construction
- Double-wide convertible helm seat w/articulating bottom
- Modular bow seating w/removable seat bottom
- Starboard gear storage locker
- In-floor ski & wakeboard storage
- Portside convertible lounge w/trash container below
- U-shaped lounge seating w/molded-in cooler below
- Aft-facing sun lounge w/dual-position backrest & trunk storage w/fenders (2 included) & accessory outlet below
- Battery on/off switch w/parallel
- Woven cockpit mat

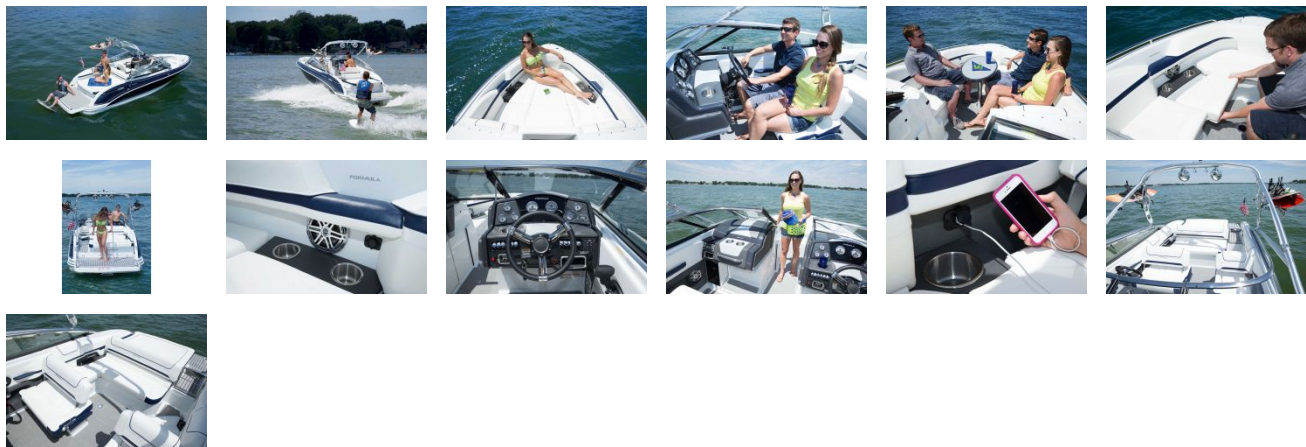
240 BOWRIDER HEAD

- Continuous molded liner
- Concealed, one-piece locking door
- Side panel storage counter
- Portable head unit
- Washed Oak, Baltic Birch or Gray Wash woodgrain-finish flooring
- Carbon monoxide detector

240 BOWRIDER ENGINE ROOM

- Single engine installation w/thru-bolted engine mounts
- Motorized hatch lift
- Courtesy lighting, fume detector & auto fire extinguisher
- Start & aux batteries w/retainers
- 20-amp battery charger
- Galvanic corrosion protection systems
- Bilge blower & automatic bilge pump
- Bennett® hydraulic trim tabs
- Stainless props

GALLERY



Formula Boats Northeast
692 S Wellwood Ave
Lindenhurst, NY 11757 US
Phone: 631 574-8811