



**Formula Boats Northeast**  
692 S Wellwood Ave  
Lindenhurst, NY 11757 US  
Phone: 631 574-8811

# Formula 290 Bowrider

Boat Type: Bowrider



## OVERVIEW

From stem to stern, everything about the Formula Bowrider series is designed to meet your needs and maximize your fun and relaxation on the water. This is where excellence meets sophistication, and superiority meets authenticity. The 290 Formula Bowrider is our second largest upscale sport boat, one that combines Formula prestige with your personal touch.

## SPECIFICATIONS

### Basic Information

Manufacturer:	Formula	Boat Type:	Bowrider
Model:	290 Bowrider	Hull Material:	Fiberglass
Year:	2018	Hull Type:	Deep Vee
Category:	Power		

## Dimensions & Weight

Length:	29.00 ft	Draft - max:	3 ft 4 in - 1.01 meter
LOA:	31 ft 9 in - 9.68 meter	Bridge Clearance:	8 ft 2 in - 2.49 meter
Beam:	9 ft - 2.74 meter	Dry Weight:	8950 ft
Deadrise Aft:	22.00 °		

## Tank Capacities

Fuel Tank:	112 gallons - 1 tank(s)	Holding Tank:	23 gallons - 1 tank(s)
Fresh Water Tank:	19 gallons - 1 tank(s)		

## Accommodations

Total Cabins:	-	Crew Cabins:	-
Total Berths:	-	Crew Berths:	-
Total Sleeps:	-	Crew Sleeps:	-
Total Heads:	1	Crew Heads:	-
Captains Cabin:	No		

## FEATURES

### 290 Bowrider/BR FX Standard Equipment

#### 290 BOWRIDER/BR FX EXTERIOR

- NMMA Yacht/CE Certification
- Transferable 5-Year Formula Guard® Limited Protection Plan w/10-year Structural Warranty (USA only)
- Ashland Maxguard™ LE gelcoat
- Standard graphic in A, B or C w/Axalta™ Chroma Premier® basecoat & Imron® Elite clearcoat
- Pressure-treated Perma Panel™ structural hull matrix w/foam-filled hull cavities
- Chemically bonded & thru-bolted deck-to-hull joint
- Heavy-duty PVC gunwale w/stainless insert
- Concealed fiberglass anchor locker w/stainless beach ladder
- 316L bow rails
- Stainless hardware & 316L welded rails
- Stainless Formula logo-cast cleats (6), fuel fill, polished engine grilles & port lights w/screens (2)
- Continuous tinted, tempered curved-glass windshield w/stainless top frame, center walk-thru & windshield wiper
- Concealed air horn
- 316L stainless transom grab rail & tow eye
- Clarion® waterproof transom-mounted stereo control & two 6 1/2" speakers
- Integrated swim platform w/concealed stainless swim ladder
- Transom shower
- Chrome-finished city water inlet

#### 290 BOWRIDER/BR FX COCKPIT

- Continuous molded deck & cockpit liner
- Molded fiberglass dash in Charcoal or Mocha w/Liquid Black panels, Ritchie® compass, digital depth sounder, digital illuminated instrumentation w/chrome bezels, illuminated waterproof accessory rocker switches w/E-T-A®

circuit breakers, auxiliary 12V outlet, dual USB charging port, tilt wheel in leather wrapped stainless & lockable under-dash storage compartment

- Electronic shift & throttle control
- Safety ignition tether & Bennett tab switches w/indicators
- Mercury DTS control system w/SmartCraft VesselView™ engine monitor, Volvo EVC system w/7" engine display or Ilmor electronic shift & throttle w/MERLIN Digital Dashboard - standard w/corresponding engines
- Mercury Marine® Active Trim system - standard w/Merc engines
- Clarion AM/FM stereo w/dash-mounted control, iPod/MP3 port & six 61 /2? speakers w/400W amplification
- Portside glovebox w/Clarion AM/FM stereo w/iPod/USB port, Bluetooth & auxiliary 12V outlet
- 5 dual USB charging ports – 2 in aft cockpit & 2 in bow & 1 at sunpad
- 19 polished stainless drink holders
- Cockpit/swim platform blue/white LED courtesy lights w/remote control
- Weather-resistant cockpit seating featuring PreFixx® coating, Tenara® element-resistant thread, DriFast® foam & StarLite® XL synthetic marine panel construction
- Double-wide convertible helm seat w/articulating seat bottom
- Modular bow seating/sunpad system w/armrests & removable seat bottoms
- Starboard gear storage locker
- Forward in-floor wakeboard/ski storage
- Demand water system w/20-gallon capacity
- Portside convertible lounge seat
- L-shaped aft lounge seating w/integrated storage, trash container & molded-in cooler
- Color-coordinated dual-height cockpit table w/Corian® top, filler cushion & four polished drink holders
- Aft-facing sun lounge w/multi-position backrest & trunk storage w/fenders (2 included) & accessory outlet below • Fire extinguisher
- Disconnect switches for aux & start batteries
- Battery parallel emergency switch
- Woven cockpit mat
- Stainless transom gate

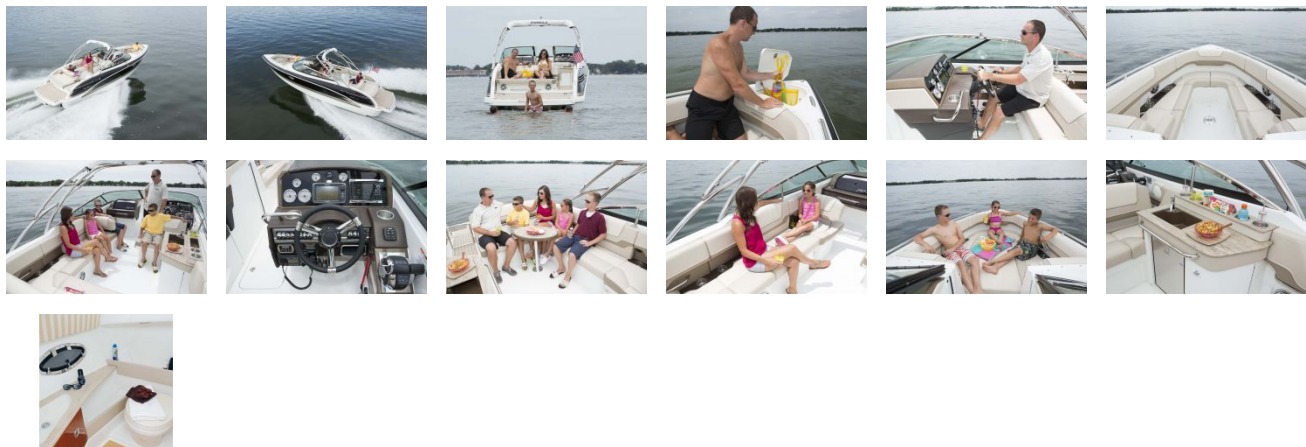
## **290 BOWRIDER/BR FX HEAD**

- Concealed, one-piece locking door
- Molded head compartment w/porcelain head unit, 23-gallon holding tank & dockside pumpout, molded vanity, sink w/faucet, Corian counter top & Washed Oak, Baltic Birch or Gray Wash woodgrain-finish flooring
- Carbon monoxide detector

## **290 BOWRIDER/BR FX ENGINE ROOM**

- Single or twin engine installation w/thru-bolted engine mounts
- Motorized hatch lift
- Courtesy lighting, fume detector & automatic fire extinguisher
- Twin start & aux batteries w/retainers
- 20-amp battery charger
- Galvanic corrosion protection systems
- Bilge blowers, automatic bilge pump & high water alarm
- Bennett® hydraulic trim tabs
- Stainless props

GALLERY



**Formula Boats Northeast**  
692 S Wellwood Ave  
Lindenhurst, NY 11757 US  
Phone: 631 574-8811