



Formula Boats South
909 10th Street South Suite 102
Naples, FL, US, 34102
Phone: 239-331-2104

Formula 330 Crossover Bowrider

Boat Type: Bowrider



OVERVIEW

From stem to stern, everything about the Formula Crossover Bowrider series is designed to meet the needs of those looking for a large, luxurious bowrider with comfortable overnight capabilities. This is where excellence meets sophistication, and superiority meets authenticity. The Formula 330 Crossover Bowrider embodies this innovative combination, and is every bit the upscale sport boat, combined with Formula prestige and your personal touch.

SPECIFICATIONS

Basic Information

| | | | |
|---------------|------------------------|----------------|------------|
| Manufacturer: | Formula | Boat Type: | Bowrider |
| Model: | 330 Crossover Bowrider | Hull Material: | Fiberglass |
| Year: | 2018 | Hull Type: | Deep Vee |
| Category: | Power | | |

Dimensions & Weight

| | | | |
|---------------|-------------------------|-------------------|-------------------------|
| Length: | 33.00 ft | Draft - max: | 2 ft 11 in - 0.89 meter |
| LOA: | 33 ft - 10.06 meter | Bridge Clearance: | 9 ft 1 in - 2.77 meter |
| Beam: | 10 ft 3 in - 3.12 meter | Dry Weight: | 12500 ft |
| Deadrise Aft: | 21.00 ° | | |

Tank Capacities

| | | | |
|-------------------|-------------------------|---------------|------------------------|
| Fuel Tank: | 151 gallons - 1 tank(s) | Holding Tank: | 26 gallons - 1 tank(s) |
| Fresh Water Tank: | 25 gallons - 1 tank(s) | | |

Accommodations

| | | | |
|-----------------|----|--------------|---|
| Total Cabins: | 1 | Crew Cabins: | - |
| Total Berths: | - | Crew Berths: | - |
| Total Sleeps: | 2 | Crew Sleeps: | - |
| Total Heads: | 1 | Crew Heads: | - |
| Captains Cabin: | No | | |

FEATURES

330 Crossover Bowrider/CBR FX Standard Equipment

330 CBR/CBR FX EXTERIOR

- NMMA Yacht Certification
- Transferable 5-Year Formula Guard® Limited Protection Plan w/10-year Structural Warranty (USA only)
- Ashland Maxguard™ LE gelcoat
- Standard graphic in A, B or C w/Axalta™ Chroma Premier® basecoat & Imron® Elite clearcoat
- Pressure-treated Perma Panel™ structural hull matrix w/foam-filled hull cavities
- Chemically bonded & thru-bolted deck-to-hull joint
- Heavy-duty PVC gunwale w/stainless insert
- 316L bow rails
- Concealed fiberglass anchor locker
- Stainless hardware & 316L welded rails
- Stainless Formula logo-cast cleats (10), fuel fill, polished engine vent grilles & venting polished port lights w/screens (3)
- Continuous tinted, tempered curved-glass windshield w/stainless top frame, offset walk-thru & windshield wiper
- Concealed air horn
- 316L stainless transom grabrail & tow rope mount

- Clarion® waterproof transom-mounted stereo control & two 6 1/2" speakers
- Transom trunk storage & two fenders
- Integrated swim platform w/under mount stainless swim ladder, pop-up grab bar & pull-up cleats
- Transom shower
- Chrome-finished city water inlet
- Woodgrain vinyl decking on swim platform (OB models)

330 CBR/CBR FX COCKPIT

- Continuous, flush level molded deck & cockpit liner
- Molded fiberglass dash in Charcoal or Mocha w/Liquid Black panels, Ritchie® compass, Raymarine® eS78 GPS color chartplotter w/depth sounder, illuminated waterproof accessory rocker switches w/E-T-A® circuit breakers, digital illuminated instrumentation w/chrome bezels, auxiliary 12V outlet, dual USB charging port & tilt wheel in leather wrapped stainless
- Electronic shift & throttle control
- Safety ignition tether & Bennett tab switches w/indicators
- Mercury DTS control system w/SmartCraft VesselView™ engine monitor, Volvo EVC system w/7" engine display or Ilmor electronic shift & throttle w/MERLIN Digital Dashboard
- Mercury Marine® Active Trim system - standard with Merc
- Mercury® Joystick Piloting for Outboards (JPO) docking system
- Clarion dash-mounted stereo control, two smartphone dash pockets, iPod/MP3 port, six 6 1/2" speakers w/600W stereo amplification
- 5 dual USB charging ports – 2 in aft cockpit, 2 in bow & 1 at sunpad
- 22 polished stainless drink holders
- Cockpit/swim platform blue/white LED courtesy lights w/remote control
- Integral 316L safety rails
- Weather-resistant cockpit seating featuring PreFixx® coating, Tenara® element-resistant thread, DriFast® foam & StarLite® XL synthetic marine panel construction
- Dual position helm & companion seats w/convertible backrests
- Modular bow seating/sunpad system w/removeable seat bottom
- Double-wide forward facing bow seating w/armrest
- Two color-coordinated dual-height cockpit tables w/Corian tops & filler cushions
- Under-cushion bow storage w/molded-in insulated cooler
- Portside gear storage locker w/cockpit table storage
- Dedicated portside storage locker for bow filler cushions
- Expansive in-floor lazarette storage
- Dedicated acrylic wind breaker panel
- Port lounge w/integrated under-seat storage
- Starboard side L-shaped lounge seating w/convertible backrests & storage below
- Color-coordinated molded wetbar w/integrated sink & picnicware storage, Corian countertop, 30-quart cooler & integral 316L safety rail
- Demand water system w/25-gallon capacity
- L-shaped aft lounge seating w/storage, fire extinguisher, trash container & molded-in insulated cooler
- Color-coordinated dual-height cockpit table w/Corian top, filler cushion & three polished drink holders
- Aft-facing sun lounge w/multi-position backrests & trunk storage & accessory outlet below
- Disconnect switches for aux & start batteries
- Battery parallel emergency switch
- Woven cockpit mat
- Stainless transom gate

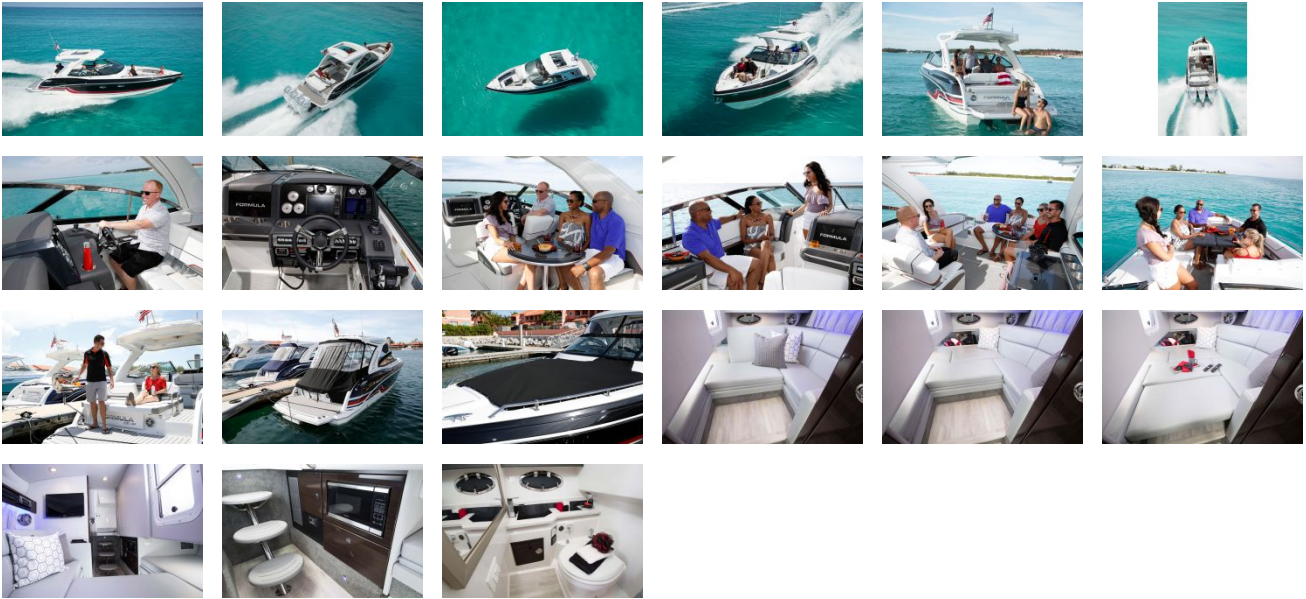
330 CBR/CBR FX CABIN

- Dash-integrated cabin door w/lockable personal electronics storage compartment
- Solid wood cabin entry steps
- Washed Oak, Baltic Birch or Gray Wash woodgrain-finish flooring throughout cabin
- L-shaped Ultraleather™ double-wide lounge seating w/pop up back rest – converts to full-size berth w/included filler cushion
- Custom décor pillows & drapery
- Portside storage in Open-Grain Walnut, Open-Grain Driftwood or high-gloss Ash or Wenge finish w/electrical panels
- Clarion® AM/FM stereo w/iPod/USB docking station, Bluetooth & two 61 /2? speakers
- Subscription-ready Sirius™ Satellite Radio
- Dual USB charging port
- Large sliding window to cockpit w/cover
- LED & accent lighting throughout cabin
- Molded head compartment w/VacuFlush® head unit, 36-gallon holding tank & dockside pumpout, molded vanity, custom molded sink w/faucet, Corian countertop, exhaust fan & Washed Oak, Baltic Birch or Gray Wash woodgrain-finish flooring
- Automatic cabin bilge pump w/high water alarm
- Carbon monoxide detector

330 CBR/CBR FX ENGINE ROOM

- Twin engine installation w/thru-bolted engine mounts or triple outboard installation
- Motorized hatch lift
- Courtesy lighting, fume detector & automatic fire extinguisher
- Twin start faux batteries w/retainers
- 20-amp battery charger
- Galvanic corrosion protection systems
- Bilge blowers, automatic bilge pump & high water alarm
- Bennett® hydraulic trim tabs
- Stainless props

GALLERY



Formula Boats South
909 10th Street South Suite 102
Naples, FL, US, 34102
Phone: 239-331-2104

