



Formula Boats Northeast  
692 S Wellwood Ave  
Lindenhurst, NY 11757 US  
Phone: 631 574-8811

# Formula 350 Crossover Bowrider

Boat Type: Bowrider



## OVERVIEW

From stem to stern, everything about the Formula Crossover Bowrider series is designed to meet the needs of those looking for a large, luxurious Bowrider with comfortable overnight capabilities. This is where excellence meets sophistication, and superiority meets authenticity. The Formula 350 Crossover Bowrider is the pinnacle of this innovative combination, and is every bit the upscale sport boat in combination with Formula prestige and your personal touch. The 350 Crossover Bowrider is now available in twin sterndrive and triple outboard power.

## SPECIFICATIONS

### Basic Information

Manufacturer:	Formula	Boat Type:	Bowrider
Model:	350 Crossover Bowrider	Hull Material:	Fiberglass
Year:	2018	Hull Type:	Deep Vee
Category:	Power		

## Dimensions & Weight

Length:	35.00 ft	Draft - max:	3 ft 3 in - 0.99 meter
LOA:	35 ft - 10.67 meter	Bridge Clearance:	9 ft 5 in - 2.87 meter
Beam:	10 ft 9 in - 3.28 meter	Dry Weight:	13470 ft
Deadrise Aft:	21.00 °		

## Tank Capacities

Fuel Tank:	162 gallons - 1 tank(s)	Holding Tank:	37 gallons - 1 tank(s)
Fresh Water Tank:	29 gallons - 1 tank(s)		

## Accommodations

Total Cabins:	-	Crew Cabins:	-
Total Berths:	-	Crew Berths:	-
Total Sleeps:	-	Crew Sleeps:	-
Total Heads:	1	Crew Heads:	-
Captains Cabin:	No		

## FEATURES

### 350 Crossover Bowrider/CBR FX Standard Equipment

#### 350 CBR/CBR FX EXTERIOR

- NMMA Yacht/CE Certification
- Transferable 5-Year Formula Guard® Limited Protection Plan w/10-year Structural Warranty (USA only)
- Ashland Maxguard™ LE gelcoat
- Standard graphic in A, B or C w/Axalta™ Chroma Premier® basecoat & Imron® Elite clearcoat
- Pressure-treated Perma Panel™ structural hull matrix w/foam-filled hull cavities
- Chemically bonded & thru-bolted deck-to-hull joint
- Heavy-duty PVC gunwale w/stainless insert
- 316L bow rails
- Concealed fiberglass anchor locker
- Stainless hardware & 316L welded rails
- Stainless Formula logo-cast cleats (10), fuel fill, polished engine vent trim, venting polished port lights w/screens (2) & oversized HarbourView® portlight w/screen
- Continuous tinted, tempered curved-glass windshield w/stainless top frame, offset walk-thru & windshield wiper
- Concealed air horn
- 316L stainless transom grab rail & ski tow eye
- Clarion® waterproof transom-mounted stereo control & two 6 1/2" speakers
- Integrated swim platform w/concealed stainless swim ladder & pull up cleats
- Transom shower w/hot & cold controls
- 120V shorepower w/fail-safe galvanic isolator & 30-amp cord
- Polished stainless shorepower inlet & chrome-finished city water inlet
- Woodgrain vinyl decking on swim platform (outboard models)

#### 350 CBR/CBR FX COCKPIT

- Continuous, flush level molded deck & cockpit liner
- Molded fiberglass dash in Charcoal or Mocha w/Liquid Black panels, Ritchie® compass, Raymarine® eS78 GPS color chartplotter w/depth sounder, illuminated waterproof accessory rocker switches w/E-T-A® circuit breakers, auxiliary 12V outlet, dual USB charging port, tilt wheel in leather wrapped stainless & lockable under-dash storage compartment
- Mercury DTS w/SmartCraft VesselView™ or Volvo EVC w/7" engine display or Ilmor electronic shift & throttle w/MERLIN Digital Dashboard
- Electronic shift & throttle control
- Safety ignition tether & Bennett tab switches w/indicators
- MerCruiser® Joystick Piloting for Sterndrives (JPS) docking system
- Mercury® Joystick Piloting for Outboards (JPO) docking system
- Volvo sterndrive joystick control
- Ilmor One Touch™ joystick vessel control
- Mercury Marine® Active Trim system - standard w/Merc
- Clarion dash-mounted stereo control, iPod/MP3 port, eight 6 1/2" speakers w/600W stereo amplification & subwoofer
- 5 dual USB charging ports – 2 in aft cockpit, 2 in bow & 1 at sunpad
- 24 polished stainless drink holders
- Cockpit/swim platform blue/white LED courtesy lights w/remote
- Integral 316L safety rails
- Weather-resistant cockpit seating featuring PreFixx® coating, Tenara® element-resistant thread, DriFast® foam & StarLite® XL synthetic marine panel construction
- Dual position helm & companion seats
- Modular bow seating/sunpad system w/removeable seat bottom
- Double-wide forward facing bow seating w/armrest
- Two color-coordinated dual-height bow tables w/Corian tops & filler cushions
- Under-cushion bow storage w/17 1/2" Igloo® cooler & trash container
- Bow in-floor storage
- Portside gear storage locker
- Dedicated portside storage locker for bow filler cushions
- Forward in-floor wakeboard/ski storage
- Dedicated acrylic wind breaker panel
- Color-coordinated molded wetbar w/integrated sink, Corian countertop, 120V/12V pullout cockpit refrigerator w/stainless front, trash container, integral 316L safety rail & fire extinguisher
- Demand water system w/29-gallon capacity
- Port lounge w/integrated under-seat storage & backrest locker w/line storage
- U-shaped aft lounge seating w/storage
- Color-coordinated dual-height cockpit table w/Corian top, filler cushion & four polished drink holders
- Aft-facing sun lounge w/multi position backrests w/trunk storage & fenders (2 included) below & accessory outlet • Disconnect switches for aux & start batteries
- Battery parallel emergency switch
- Woven cockpit mat
- Stainless transom gate
- Bimini top in color-coordinated non-fading Sunbrella® fabric w/Seamark™ vinyl undercoating

### **350 CBR/CBR FX CABIN**

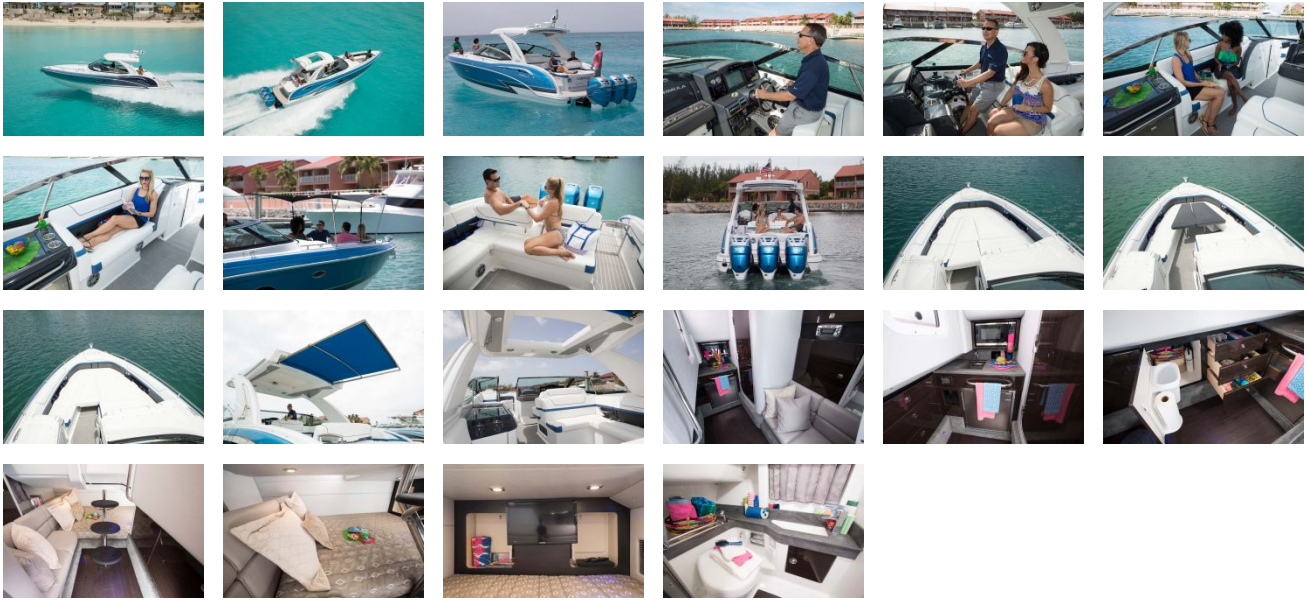
- Dash-integrated cabin door w/personal electronics storage compartment
- Solid wood cabin entry steps
- Washed Oak, Baltic Birch or Gray Wash woodgrain-finish flooring throughout

- Ultraleather™ double-wide lounge seating
- Custom décor pillows & draperies
- Galley in Open-Grain Walnut, Open-Grain Driftwood or high-gloss Ash or Wenge finish w/storage, full Corian countertop, concealed sink w/hot & cold faucet, 120V/12V pullout stainless refrigerator & brushed stainless microwave
- Portside galley storage in Open-Grain Walnut, Open-Grain Driftwood or high gloss Ash or Wenge finish w/galley drawers & storage cupboard w/ wastebasket & paper towel holder
- Starboard cedar-lined hanging locker in Open-Grain Walnut, Open-Grain Driftwood or high-gloss Ash or Wenge finish w/120V/12V electrical panels
- Clarion® AM/FM stereo w/iPod/USB docking station, Bluetooth & two 61 /2? speakers
- Subscription-ready Sirius™ Satellite Radio
- Dual USB charging port
- Large sliding window to cockpit
- LED & accent lighting throughout cabin
- Aft cabin full-size berth w/Sensus® memory foam mattress, pillow shams & full width storage
- 120V water heater w/heat exchanger
- Molded head compartment w/VacuFlush® head unit, 37-gallon holding tank & dockside pumpout, molded vanity, custom molded sink w/faucet, Corian countertop, retractable showerhead, exhaust fan & Washed Oak, Baltic Birch or Gray Wash woodgrain-finish flooring
- Automatic cabin bilge pump w/high water alarm
- Carbon monoxide detector

### **350 CBR/CBR FX ENGINE ROOM**

- Twin engine installation w/thru-bolted engine mounts or triple outboard installation
- Motorized hatch lift
- Courtesy lighting, fume detector & automatic fire extinguisher
- Twin start & aux batteries w/retainers & 60-amp battery charger
- Galvanic corrosion protection systems
- Bilge blowers, automatic bilge pump & high water alarm
- Bennett® hydraulic trim tabs
- Stainless props

# GALLERY



**Formula Boats Northeast**  
692 S Wellwood Ave  
Lindenhurst, NY 11757 US  
Phone: 631 574-8811