



Formula Boats South
909 10th Street South Suite 102
Naples, FL, US, 34102
Phone: 239-331-2104

Formula 310 Sun Sport

Boat Type: Sport Cruiser



OVERVIEW

Take to the waters in style and class with the mastery of the Formula 310 Sun Sport. For years, boat designers have tried to duplicate the Formula Sun Sport series, but no other craft can equal the luxury standards of our sleek, muscular sports model. It's just another reminder that Formula truly is the world's premier powerboat manufacturer.

SPECIFICATIONS

Basic Information

Manufacturer:	Formula	Boat Type:	Sport Cruiser
Model:	310 Sun Sport	Hull Material:	Fiberglass
Year:	2018	Hull Type:	Deep Vee
Category:	Power		

Dimensions & Weight

Length:	31.00 ft	Draft - max:	3 ft 1 in - 0.94 meter
LOA:	31 ft - 9.45 meter	Bridge Clearance:	8 ft 8 in - 2.64 meter
Beam:	9 ft 6 in - 2.9 meter	Dry Weight:	9750 ft
Deadrise Aft:	22.00 °		

Tank Capacities

Fuel Tank:	130 gallons - 1 tank(s)	Holding Tank:	36 gallons - 1 tank(s)
Fresh Water Tank:	29 gallons - 1 tank(s)		

Accommodations

Total Cabins:	-	Crew Cabins:	-
Total Berths:	-	Crew Berths:	-
Total Sleeps:	-	Crew Sleeps:	-
Total Heads:	1	Crew Heads:	-
Captains Cabin:	No		

FEATURES

310 Sun Sport/FX Standard Equipment

310 SUN SPORT/FX EXTERIOR

- NMMA Yacht/CE Certification
- Transferable 5-Year Formula Guard® Limited Protection Plan w/10-year Structural Warranty (USA only)
- Ashland Maxguard™ LE gelcoat
- Standard graphic in A, B or C w/Axalta™ Chroma Premier® basecoat & Imron® Elite clearcoat
- Pressure-treated Perma Panel™ structural hull matrix w/foam-filled hull cavities
- Chemically bonded & thru-bolted deck-to-hull joint
- Heavy-duty PVC gunwale w/stainless insert
- Concealed fiberglass anchor locker
- 316L offshore bow rail
- Stainless hardware & 316L welded rails
- Stainless custom Formula logo-cast cleats (8), fuel fill, polished engine vent trim, polished Bomar® deck venting hatches w/screens (2) & port lights w/screens (4)
- Continuous tinted, tempered curved-glass windshield w/stainless top frame, center walk-thru & windshield wiper
- Concealed air horn
- 316L stainless transom grab rail & tow eye
- Clarion® waterproof transom-mounted stereo control & two 6 1/2" speakers
- Integrated swim platform w/concealed stainless swim ladder & pull-up cleats
- Transom shower
- Chrome-finished city water inlet
- Woodgrain vinyl decking on swim platform (outboard models)

310 SUN SPORT/FX COCKPIT

- Continuous molded deck & cockpit liner

- Molded deck access steps w/316L stainless handrail
- Molded fiberglass dash in Charcoal or Mocha w/Liquid Black panels, Ritchie® compass, digital illuminated instrumentation w/chrome bezels, Raymarine® eS78 GPS color chartplotter w/depth sounder, illuminated waterproof accessory rocker switches w/E-T-A® circuit breakers, auxiliary 12V outlet, dual USB charging port, tilt wheel in leather wrapped stainless & lockable under-dash storage compartment
- Safety ignition tether & Bennett tab switches w/indicators
- Mercury DTS control system w/SmartCraft VesselView™ engine monitor, Volvo EVC system w/7" engine display or Ilmor electronic shift & throttle w/MERLIN Digital Dashboard - standard w/corresponding engines • Mercury Marine® Active Trim system - standard w/Merc
- Mercury® Joystick Piloting for Outboards (JPO) docking system
- Clarion dash-mounted stereo control, two smartphone dash pockets, iPod/MP3 port, four 61 /2? speakers w/400W stereo amplification
- 3 dual USB charging ports - 2 in cockpit & 1 at sunpad
- 12 polished stainless drink holders
- Cockpit/swim platform blue/white LED courtesy lights w/remote control
- Weather-resistant cockpit seating featuring PreFixx® coating, Tenara® element-resistant thread, DriFast® foam & StarLite® XL synthetic marine panel construction
- Dual position helm & companion seats w/convertible backrests
- Port lounge w/integrated dive tank storage & trash container
- Color-coordinated molded wetbar w/integrated sink & dry storage, Corian countertop, 171 /2-quart Igloo cooler, integral 316L safety rail & fire extinguisher
- In-floor storage
- U-shaped aft lounge seating w/storage
- Two color-coordinated dual-height cockpit tables w/Corian® top, filler cushion & polished drink holders (2 each)
- Aft-facing sun lounge w/multi-position backrests & trunk storage w/fenders (2 included) & accessory outlet below
- Demand water system w/29-gallon capacity
- Disconnect switches for aux & start batteries
- Battery parallel emergency switch
- Woven cockpit mat
- Stainless transom gate

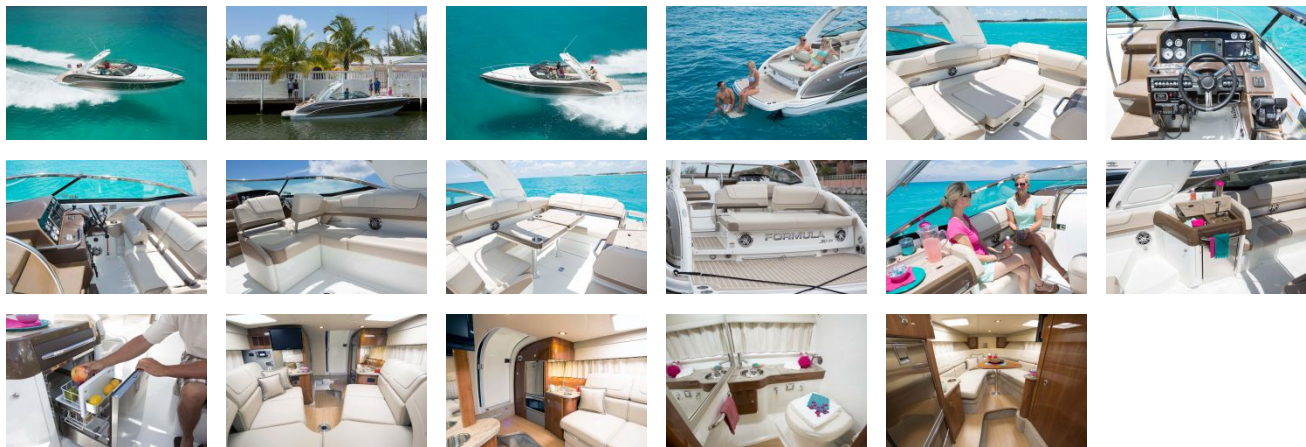
310 SUN SPORT/FX CABIN

- Sliding/locking cabin door w/screen
- Solid wood cabin entry steps
- Washed Oak, Baltic Birch or Gray Wash woodgrain-finish flooring throughout cabin
- Ultraleather™ U-shaped forward dinette lounge/double berth w/Open-Grain Walnut, Open-Grain Driftwood, high-gloss Ash or Wenge wood table & filler cushion
- Custom décor pillows & draperies
- Entertainment center in Open- Grain Walnut, Open-Grain Driftwood, high-gloss Ash or Wenge finish w/hanging locker, full Corian countertop w/polished stainless sink, 12V/120V stainless refrigerator, in-counter trash & fire extinguisher
- Clarion® AM/FM stereo w/iPod/USB port, Bluetooth & two 61 /2? speakers
- Dual USB charging port
- Subscription-ready Sirius™ Satellite Radio
- Molded head compartment w/Vacuflush head unit, 23-gallon holding tank & dockside pumpout, molded vanity, stainless sink w/faucet, brushed framed mirror, Corian countertop & Washed Oak, Baltic Birch or Gray Wash woodgrain-finish flooring
- Carbon monoxide detector

310 SUN SPORT/FX ENGINE ROOM

- Twin sterndrive engine installation w/thru-bolted engine mounts or twin outboard engine installation
- Motorized hatch lift
- Courtesy lighting, fume detector & automatic fire extinguisher
- Twin start & aux batteries w/retainers
- 20-amp battery charger
- Galvanic corrosion protection systems
- Bilge blowers, automatic bilge pump & high water alarm
- Bennett® hydraulic trim tabs
- Stainless props

GALLERY



Formula Boats South
909 10th Street South Suite 102
Naples, FL, US, 34102
Phone: 239-331-2104