



**Formula Boats South**  
909 10th Street South Suite 102  
Naples, FL, US, 34102  
Phone: 239-331-2104

# Formula 350 Sun Sport

Boat Type: Sport Cruiser



## OVERVIEW

Take to the waters in style and class with the mastery of the Formula 350 Sun Sport. For years, boat designers have tried to duplicate the Formula Sun Sport series, but no other craft can equal the luxury standards of our sleek, muscular sports model. It's just another reminder that Formula truly is the world's premier powerboat manufacturer.

## SPECIFICATIONS

### Basic Information

Manufacturer:	Formula	Boat Type:	Sport Cruiser
Model:	350 Sun Sport	Hull Material:	Fiberglass
Year:	2018	Hull Type:	Deep Vee
Category:	Power		

## Dimensions & Weight

Length:	35.00 ft	Draft - max:	3 ft 3 in - 0.99 meter
LOA:	35 ft - 10.67 meter	Bridge Clearance:	9 ft 8 in - 2.95 meter
Beam:	10 ft 9 in - 3.28 meter	Dry Weight:	13470 ft
Deadrise Aft:	21.00 °		

## Tank Capacities

Fuel Tank:	162 gallons - 1 tank(s)	Holding Tank:	37 gallons - 1 tank(s)
Fresh Water Tank:	29 gallons - 1 tank(s)		

## Accommodations

Total Cabins:	-	Crew Cabins:	-
Total Berths:	-	Crew Berths:	-
Total Sleeps:	-	Crew Sleeps:	-
Total Heads:	1	Crew Heads:	-
Captains Cabin:	No		

## FEATURES

### 350 Sun Sport/FX Standard Equipment

#### 350 SUN SPORT/FX EXTERIOR

- NMMA Yacht/CE Certification
- Transferable 5-Year Formula Guard® Limited Protection Plan w/10-year Structural Warranty (USA only)
- Ashland Maxguard™ LE gelcoat
- Standard graphic in A, B or C w/Axalta™ Chroma Premier® basecoat & Imron® Elite clearcoat
- Pressure-treated Perma Panel™ structural hull matrix w/foam-filled hull cavities
- Chemically bonded & thru-bolted deck-to-hull joint
- Heavy-duty PVC gunwale w/stainless insert
- Concealed fiberglass anchor locker
- 316L offshore bow rail
- Stainless hardware & 316L welded rails
- Stainless custom Formula logo-cast cleats (10), fuel fill, polished engine vent trim, polished Bomar® deck venting hatches w/screens (2) & port lights w/screens (4)
- Continuous tinted, tempered curved-glass windshield w/stainless top frame, center walkthru & windshield wiper
- Concealed air horn
- 316L stainless transom grabrail & ski tow eye
- Clarion® waterproof transom-mounted stereo control & two transom-mounted 61 /2? speakers
- Integrated swim platform w/concealed stainless swim ladder & pull-up cleats
- Transom shower w/hot & cold controls
- 120V shorepower w/fail-safe galvanic isolator & two 30-amp cords
- Polished stainless shorepower inlet & chrome-finished city water inlet
- Woodgrain vinyl decking on swim platform (outboard models)

#### 350 SUN SPORT/FX COCKPIT

- Continuous molded deck & cockpit liner
- Molded deck access steps w/316L stainless handrail
- Molded fiberglass dash in Charcoal or Mocha w/Liquid Black panels, Ritchie® compass, Raymarine® eS78 GPS color chartplotter w/digital depth sounder, illuminated waterproof accessory rocker switches w/E-T-A® circuit breakers, auxiliary 12V outlet, dual USB charging port, tilt wheel in leather wrapped stainless & lockable under-dash storage compartment
- Mercury DTS w/SmartCraft VesselView™, Volvo EVC system w/7" engine display or Ilmor electronic shift & throttle w/MERLIN Digital Dashboard
- Electronic shift & throttle control
- Safety ignition tether & Bennett® tab switches w/indicators
- MerCruiser® Joystick Piloting for Sterndrives (JPS) docking system
- Mercury® Joystick Piloting for Outboards (JPO) docking system
- Volvo sterndrive joystick control
- Ilmor One Touch™ joystick vessel control
- Mercury Marine® Active Trim system - standard w/Merc
- Clarion dash-mounted stereo control, iPod/MP3 port, four 61 /2? speakers, 600W stereo amplification & subwoofer
- 3 dual USB charging ports - 2 in cockpit & 1 at sunpad
- 15 polished stainless drink holders
- Cockpit/swim platform blue/white LED courtesy lights w/remote control
- Integral 316L safety rails
- Weather-resistant cockpit seating featuring PreFixx® coating, Tenara® element-resistant thread, DriFast® foam & StarLite® XL synthetic marine panel construction
- Dual position helm & companion seats
- Color-coordinated molded wetbar w/sink, Corian countertop, 120V/12V pullout cockpit refrigerator w/stainless front, trash container, fire extinguisher & integral 316L safety rail
- Port side & U-shaped aft lounge w/storage
- Color-coordinated dual-height cockpit table w/Corian® top, filler cushion & four polished drink holders
- Aft-facing sun lounge w/mult-position backrests w/trunk storage & fenders (2 included) below & accessory outlet
- Demand water system w/29-gallon capacity
- Disconnect switches for aux & start batteries
- Battery parallel emergency switch
- Woven cockpit mat
- Stainless transom gate
- Bimini top in color-coordinated non-fading Sunbrella® fabric w/Seamark™ vinyl undercoating

### **350 SUN SPORT/FX CABIN**

- Sliding/locking cabin door w/screen
- Solid wood cabin entry steps
- Washed Oak, Baltic Birch or Gray Wash woodgrain-finish flooring throughout cabin
- Ultraleather™ lounge w/dual-height Open-Grain Walnut, Open-Grain Driftwood or high-gloss Ash or Wenge wood table & filler cushion • Custom décor pillows & draperies
- Entertainment center in Open-Grain Walnut, Open-Grain Driftwood or high-gloss Ash or Wenge finish w/Corian countertop, polished stainless 12V/120V refrigerator & 120V/12V electrical panels
- Hanging locker
- Clarion® AM/FM stereo w/iPod/USB docking station, Bluetooth & two 61 /2? speakers
- Subscription-ready Sirius™ Satellite Radio
- Two dual USB charging ports – lounge & aft cabin
- Complete galley in Open-Grain Walnut, OpenGrain Driftwood or high-gloss Ash or Wenge finish w/storage & hardwood dovetailed drawers, full Corian countertop, polished stainless sink, concealed electric stove w/safety

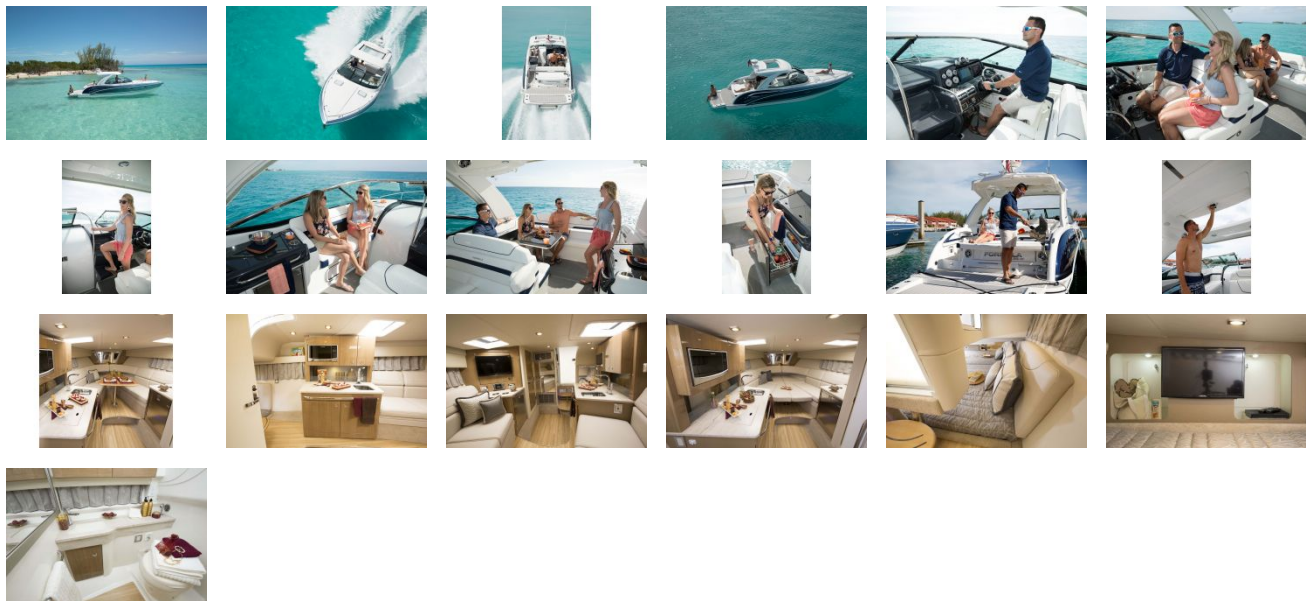
switch, microwave, concealed trash & fire extinguisher

- Aft cabin stateroom/full-size berth w/Sensus® memory foam mattress, pillow shams & full width storage
- 120V water heater w/heat exchanger
- Molded head compartment w/VacuFlush® head unit, 37-gallon holding tank & dockside pumpout, molded vanity, custom molded sink w/faucet, Corian counter top, retractable showerhead, exhaust fan & Washed Oak, Baltic Birch or Gray Wash woodgrain-finish flooring
- Automatic cabin bilge pump w/high water alarm
- Carbon monoxide detector

### **350 SUN SPORT/FX ENGINE ROOM**

- Twin engine installation w/thru-bolted engine mounts or triple outboard installation
- Motorized hatch lift
- Courtesy lighting, fume detector & automatic fire extinguisher
- Twin start & aux batteries w/retainers & 60-amp battery charger
- Galvanic corrosion protection systems
- Bilge blowers, automatic bilge pump & high water alarm
- Bennett® hydraulic trim tabs
- Stainless props

GALLERY



**Formula Boats South**  
909 10th Street South Suite 102  
Naples, FL, US, 34102  
Phone: 239-331-2104