



Formula Boats Northeast
692 S Wellwood Ave
Lindenhurst, NY 11757 US
Phone: 631 574-8811

Formula 400 FX

Boat Type: Sport Cruiser



OVERVIEW

Power into deeper waters like never before with the upscale design of the 400 FX8 model. This is where the energy of our Super Sport and Sun Sport models meets the sophistication and sleek lines of our FAS3Tech crafts. Take this ultra-luxury cruiser anywhere on the water with its sport boat handling and offshore speed. And the deluxe cabin ensures that your comfort can be extended for as long as you like. This is your Formula for advanced water sporting.

SPECIFICATIONS

Basic Information

Manufacturer:	Formula	Boat Type:	Sport Cruiser
Model:	400 FX	Hull Material:	Fiberglass
Year:	2018	Hull Type:	Deep Vee
Category:	Power		

Dimensions & Weight

Length:	40.00 ft	Draft - max:	3 ft 3 in - 0.99 meter
LOA:	41 ft 6 in - 12.65 meter	Bridge Clearance:	12 ft 6 in - 3.81 meter
Beam:	11 ft - 3.35 meter	Dry Weight:	17100 ft
Deadrise Aft:	22.00 °		

Tank Capacities

Fuel Tank:	227 gallons - 1 tank(s)	Holding Tank:	50 gallons - 1 tank(s)
Fresh Water Tank:	50 gallons - 1 tank(s)		

Accommodations

Total Cabins:	-	Crew Cabins:	-
Total Berths:	-	Crew Berths:	-
Total Sleeps:	-	Crew Sleeps:	-
Total Heads:	-	Crew Heads:	-
Captains Cabin:	No		

FEATURES

400 Super Sport/FX Standard Equipment

400 SUPER SPORT/FX EXTERIOR

- NMMA Yacht/CE Certification
- Transferable 5-Year Formula Guard® Limited Protection Plan w/10-year Structural Warranty (USA only)
- Ashland Maxguard™ LE gelcoat
- Standard graphic in A, B or C w/Axalta™ Chroma Premier® basecoat & Imron® Elite clearcoat
- FAS3 Tech hull w/foam-filled continuous molded structural grid
- Chemically bonded & thru-bolted deck-to-hull joint
- Heavy-duty PVC gunwale w/stainless insert
- Concealed electric windlass w/chain counter, 150' chain, polished stainless anchor, yacht-design thru-hull stowage & freshwater anchor washdown system
- Remote-control halogen searchlight
- Stainless hardware & 316L welded rails
- Stainless custom Formula logo-cast cleats (12), fuel fills, polished engine vent trim, polished Bomar® gull-wing deck venting hatches w/screens (4) & polished port lights w/screens (6)
- Nonskid foredeck center walkway
- Tinted, tempered curved-glass windshield w/center walk-thru, polished stainless frame & windshield wipers
- Radar arch w/integrated mast light/flagstaff w/American & Formula flags & white air horn
- Clarion® waterproof transom-mounted stereo control & two 6 1/2" JL Audio® blue LED lighted chrome-finished speakers
- Integrated swim platform w/concealed stainless swim ladder & pull-up cleats
- Transom shower w/hot & cold controls
- 120V shorepower w/fail-safe galvanic isolator & two 30-amp cords
- Polished stainless shorepower, cable TV, telephone inlets & chrome-finished city water inlet 400 SUPER SPORT/FX COCKPIT • Continuous molded deck & cockpit liner • Molded deck access steps w/316L stainless

handrail

- Molded fiberglass dash in Charcoal or Mocha w/Liquid Black panels, Ritchie® compass, Raymarine® eS78 GPS widescreen color chartplotter w/digital depth sounder, illuminated waterproof accessory rocker switches w/E-T-A® circuit breakers, auxiliary 12V outlet, USB charging port, tilt wheel in leather wrapped stainless & lockable under-dash storage compartment
- Mercury DTS w/SmartCraft VesselView™ or Volvo EVC w/7" engine display
- Electronic shift & throttle controls
- MerCruiser® (JPS) Joystick Piloting for Sterndrives docking system or Volvo sterndrive joystick control
- Safety ignition tether & Bennett® tab switches & indicators
- Clarion dash-mounted stereo control, two arch & four cockpit 6 1/2" JL Audio blue LED lighted chrome-finished speakers, iPod/MP3 port, 600W stereo amplification & lighted subwoofer
- Two dual USB charging ports
- 12 polished stainless drink holders
- Cockpit/swim platform blue/white LED courtesy lights w/remote control
- Integral 316L safety rails
- Weather-resistant cockpit seating featuring PreFixx® coating, Tenara® element-resistant thread, DriFast® foam & StarLite® XL synthetic marine panel construction
- Dual position helm & companion seats
- Color-coordinated molded wetbar w/sink, Corian countertop, 120V/12V pullout cockpit refrigerator w/stainless front, 17 1/2"-quart Igloo cooler, trash container, 120V GFCI outlet & fire extinguisher
- Port side & U-shaped aft lounge w/storage
- Color-coordinated dual-height cockpit tables w/Corian® tops & filler cushions
- Aft-facing sun lounge w/table, cushions & fender (4 included) storage below & accessory outlet – motorized conversion to full-length sunpad
- Disconnect switches for aux & start batteries
- Battery parallel emergency switch
- Woven cockpit mat
- Pneumatic-assist transom door
- Bimini top, front & side curtains w/easy-mount zippers in color-coordinated non-fading Sunbrella® fabric w/Seamark™ vinyl undercoating

400 SUPER SPORT/FX CABIN

- Sliding/locking cabin door
- Solid wood cabin entry steps
- Light Cherry, Baltic Birch or Gray Wash woodgrain-finish flooring throughout cabin
- LED & accent lighting throughout cabin
- Ultraleather™ lounge w/dual-height, high-gloss Bourbon Cherry, Ash or Wenge wood table & filler cushions
- Custom décor pillows & draperies
- OceanAir Skysol pleated blind system in galley
- In-floor table/filler cushion storage w/pneumatic lift
- Entertainment center in high-gloss Bourbon Cherry, Ash or Wenge finish w/Corian countertop & 28" LCD HDTV, Blu-ray Disc player w/WiFi & dockside access cord
- 16,000 BTU reverse cycle air conditioner w/digital touch control
- Illuminated 120V & 12V electrical panels
- Cedar-lined hanging locker w/automatic light
- Clarion® AM/FM stereo w/iPod/USB docking station, Bluetooth, two 6" x 9" & two 6 1/2" speakers
- Subscription-ready Sirius™ Satellite Radio
- Two dual USB charging ports – lounge & aft cabin
- Aft cabin w/privacy curtain, queen-size Sensus® memory foam bed, pillow shams, upholstered headboard storage,

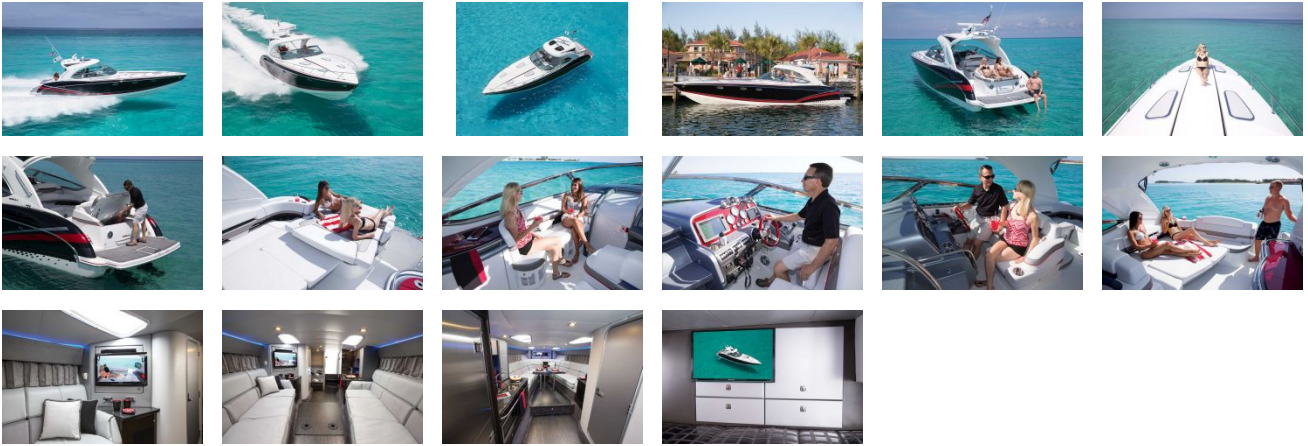
individual reading lights, night stand w/concealed storage, phone jack & 120V outlets & entertainment module/storage unit w/drawers & cable TV outlet

- Aft cabin cedar-lined hanging locker w/fire extinguisher
- Aft cabin remote stereo volume control
- Complete galley in high-gloss Bourbon Cherry, Ash or Wenge finish w/storage & hardwood dovetailed drawers, blue LED-lit cabinet showcase w/tempered stemware & tumblers, full Corian countertop, polished stainless sink, standup 120V/12V stainless refrigerator/freezer, concealed electric stove w/safety switch, microwave, Krups® blender, concealed trash container, water level gauge & fire extinguisher
- Demand water system w/50-gal capacity & onepoint water fill for freshwater tank and/or city water
- 120V water heater w/heat exchanger
- Molded private head compartment w/vanity, high-gloss Bourbon Cherry, Ash or Wenge finish lower doors, Corian countertop, polished stainless sink w/swivel faucet, porcelain Flush and Forget® VacuFlush® head w/50-gallon holding tank & dockside pumpout, separate shower area w/Corian seat, exhaust fan & night light
- Built-in WalVac® sweeper system
- Automatic cabin bilge pump w/high water alarm
- Carbon monoxide detectors

400 SUPER SPORT/FX ENGINE ROOM

- Twin engine installation w/thru-bolted engine mounts
- Motorized hatch lift • Courtesy lighting, fume detector & automatic fire extinguisher
- Twin start & aux batteries w/retainers & 80-amp battery charger
- Galvanic corrosion protection systems
- Bilge blowers, two automatic bilge pumps & high water alarm
- Bennett hydraulic trim tabs
- 7.5 KW/120V Kohler® low-CO gas generator w/battery or 8.5 KW/120V Kohler® diesel generator w/sound shield & battery
- Stainless (gas) or Nibral (diesel) props

GALLERY



Formula Boats Northeast
692 S Wellwood Ave
Lindenhurst, NY 11757 US
Phone: 631 574-8811