



**Formula Boats Northeast**  
692 S Wellwood Ave  
Lindenhurst, NY 11757 US  
Phone: 631 574-8811

# Formula 400 Super Sport

Boat Type: Sport Cruiser



## OVERVIEW

Experience the power and sophistication of a Formula Super Sport. A premier express cruiser like none other, the Formula 400 Super Sport isn't just a boat for sailing somewhere. This is a boat designed for sailing everywhere.

## SPECIFICATIONS

### Basic Information

Manufacturer:	Formula	Boat Type:	Sport Cruiser
Model:	400 Super Sport	Hull Material:	Fiberglass
Year:	2018	Hull Type:	Deep Vee
Category:	Power		

## Dimensions & Weight

Length:	40.00 ft	Draft - max:	3 ft 4 in - 1.01 meter
LOA:	41 ft 6 in - 12.65 meter	Bridge Clearance:	11 ft 6 in - 3.51 meter
Beam:	11 ft - 3.35 meter	Dry Weight:	17100 ft
Deadrise Aft:	22.00 °		

## Tank Capacities

Fuel Tank:	227 gallons - 1 tank(s)	Holding Tank:	50 gallons - 1 tank(s)
Fresh Water Tank:	50 gallons - 1 tank(s)		

## Accommodations

Total Cabins:	1	Crew Cabins:	-
Total Berths:	-	Crew Berths:	-
Total Sleeps:	-	Crew Sleeps:	-
Total Heads:	1	Crew Heads:	-
Captains Cabin:	No		

## FEATURES

### 400 Super Sport/FX Standard Equipment

#### 400 Super Sport/FX Exterior

- NMMA Yacht/CE Certification
- Transferable 5-Year Formula Guard® Limited Protection Plan w/10-year Structural Warranty (USA only)
- Ashland Maxguard™ LE gelcoat in White or Soft White
- Imron® standard graphic in A, B or C
- FAS Tech hull w/foam-filled continuous molded structural grid
- Chemically bonded & thru-bolted deck-to-hull joint
- Heavy-duty PVC gunwale w/stainless insert
- Concealed electric windlass w/chain counter, 150' chain, polished stainless anchor, yacht-design thru-hull stowage & freshwater anchor washdown system
- Remote-control halogen searchlight
- Stainless hardware & 316L welded rails
- Stainless custom Formula logo-cast cleats (12), fuel fills, polished engine vent trim, polished Bomar® gull-wing deck venting hatches w/screens (4) & polished port lights w/screens (6)
- Nonskid foredeck center walkway
- Tinted, tempered curved-glass windshield w/center walk-thru, polished stainless frame & windshield wipers
- Radar arch w/integrated mast light/flagstaff w/American & Formula flags & white air horn
- Clarion® waterproof transom-mounted stereo control & two 6 1/2" JL Audio® blue LED lighted chrome-finished speakers
- Integrated swim platform w/concealed stainless swim ladder & pull-up cleats
- Transom shower w/hot & cold controls
- 120V shorepower w/fail-safe galvanic isolator & two 30-amp cords
- Polished stainless shorepower, cable TV, telephone inlets & chrome-finished city water inlet

#### 400 Super Sport/FX Cockpit

- Continuous molded deck & cockpit liner
- Molded deck access steps w/316L stainless handrail
- Molded fiberglass dash in Gray or Morning Sand w/Liquid Black panels, Ritchie® compass, Raymarine® e7D GPS widescreen color chartplotter w/digital depth sounder, illuminated waterproof accessory rocker switches w/E-T-A® circuit breakers, auxiliary 12V outlet, tilt wheel in leather wrapped stainless & lockable under-dash storage compartment
- Mercury DTS w/SmartCraft VesselView™ or Volvo EVC w/7" engine display
- Electronic shift & throttle controls
- Safety ignition tether & Bennett® tab switches & indicators
- Clarion dash-mounted stereo control, two arch & four cockpit 6 1/2" JL Audio blue LED lighted chrome-finished speakers, iPod/MP3 port, 600W stereo amplification & 200W subwoofer
- Two dual USB charging ports
- 12 polished stainless drink holders
- Cockpit/swim platform blue/white LED courtesy lights w/remote control
- Integral 316L safety rails
- Weather-resistant cockpit seating featuring PreFixx® coating, Tenara® element-resistant thread, DriFast® foam & Star-Lite® XL synthetic marine panel construction
- Dual position helm & companion seats
- Color-coordinated molded wetbar w/sink, Corian countertop, 120V/12V pullout cockpit refrigerator w/stainless front, 17 1/2?-quart Igloo cooler, trash container, 120V GFCI outlet & fire extinguisher
- Port side & U-shaped aft lounge w/storage
- Color-coordinated dual-height cockpit tables w/Corian® tops & filler cushions
- Aft-facing sun lounge w/table, cushions & fender (4 included) storage below – motorized conversion to full-length sunpad
- Disconnect switches for aux & start batteries
- Battery parallel emergency switch
- Custom patterned cockpit carpet
- Pneumatic-assist transom door
- Bimini top, front & side curtains w/easy-mount zippers in color-coordinated non-fading Sunbrella® fabric w/Seamark™ vinyl undercoating

#### **400 Super Sport/FX Cabin**

- Sliding/locking cabin door w/screen
- Solid wood cabin entry steps
- Light Cherry or Baltic Birch woodgrain-finish flooring throughout cabin
- LED & accent lighting throughout cabin
- Ultraleather™ lounge w/Ultrasede™ lumbar, dual-height, high-gloss Bourbon Cherry, Ash or Wenge wood table & filler cushions
- Custom décor pillows & draperies
- OceanAir Skysol pleated blind system in galley
- In-floor table/filler cushion storage w/pneumatic lift
- Entertainment center in high-gloss Bourbon Cherry, Ash or Wenge finish w/Corian countertop & 26" LCD HDTV, Blu-ray Disc player w/WiFi & dockside access cord
- 16,000 BTU reverse cycle air conditioner w/digital control
- Illuminated 120V & 12V electrical panels
- Cedar-lined hanging locker w/automatic light
- Clarion® AM/FM/CD stereo w/iPod/USB docking station, Bluetooth, two 6" x 9" & two 6 1/2" speakers
- Subscription-ready Sirius™ Satellite Radio
- Aft cabin w/privacy curtain, queen-size Sensus® memory foam bed, pillow shams, upholstered headboard storage, individual reading lights, night stand w/concealed storage, phone jack & 120V outlets & entertainment

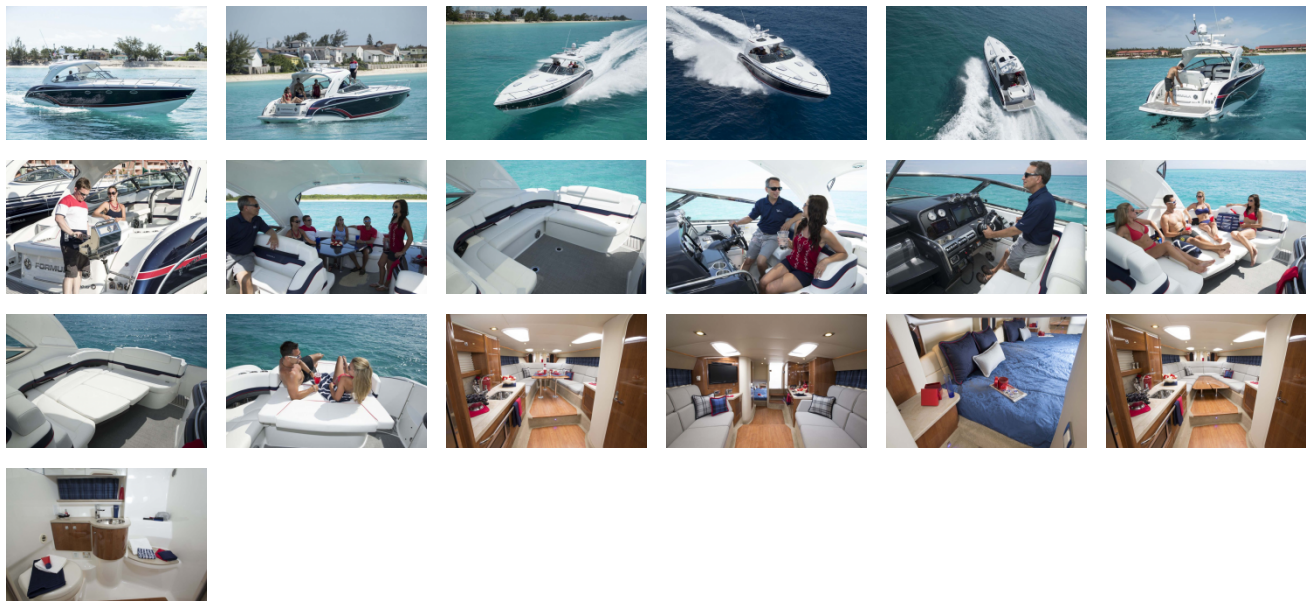
module/storage unit w/drawers & cable TV outlet

- Aft cabin cedar-lined hanging locker w/fire extinguisher
- Aft cabin remote stereo volume control
- Complete galley in high-gloss Bourbon Cherry, Ash or Wenge finish w/storage & hardwood dovetailed drawers, blue LED-lit cabinet showcase w/tempered stemware & tumblers, full Corian countertop, polished stainless sink, standup 120V/12V stainless refrigerator/freezer, concealed electric stove w/safety switch, microwave, Krups® blender, concealed trash container, water level gauge & fire extinguisher
- Demand water system w/50-gal capacity & one-point water fill for freshwater tank and/or city water
- 120V water heater w/heat exchanger
- Molded private head compartment w/vanity, high-gloss Bourbon Cherry, Ash or Wenge finish lower doors, Corian countertop, polished stainless sink w/swivel faucet, porcelain Flush and Forget® VacuFlush® head w/50-gallon holding tank & dockside pumpout, separate shower area w/Corian seat, exhaust fan & night light
- Built-in WalVac® sweeper system
- Automatic cabin bilge pump w/high water alarm
- Carbon monoxide detectors

#### **400 Super Sport/FX Engine Room**

- Twin engine installation w/thru-bolted engine mounts
- Motorized hatch lift
- Courtesy lighting, fume detector & automatic fire extinguisher
- Twin start & aux batteries w/retainers & 80-amp battery charger
- Galvanic corrosion protection systems
- Bilge blowers, two automatic bilge pumps & high water alarm
- Bennett hydraulic trim tabs
- 7.5 KW/120V Kohler® low-CO gas generator w/battery or 8.5 KW/120V Kohler® diesel generator w/sound shield & battery
- Stainless (gas) or Nibral (diesel) props

GALLERY



**Formula Boats Northeast**  
692 S Wellwood Ave  
Lindenhurst, NY 11757 US  
Phone: 631 574-8811