



**Formula Boats South**  
909 10th Street South Suite 102  
Naples, FL, US, 34102  
Phone: 239-331-2104

# Formula 31 Performance Cruiser

Boat Type: Sport Cruiser



## OVERVIEW

From stem to stern, everything about your Formula Performance Cruiser is designed to meet your needs and maximize your fun and relaxation on the water. The Formula 31 Performance Cruiser is where excellence meets sophistication and superiority meets authenticity. It's time to board your very own dream boat, kick back and enjoy an outing with family or friends.

## SPECIFICATIONS

### Basic Information

Manufacturer:	Formula	Boat Type:	Sport Cruiser
Model:	31 Performance Cruiser	Hull Material:	Fiberglass
Year:	2018	Hull Type:	Deep Vee
Category:	Power		

### Dimensions & Weight

Length:	33.00 ft	Draft - max:	2 ft 10 in - 0.86 meter
LOA:	33 ft 1 in - 10.08 meter	Bridge Clearance:	10 ft 4 in - 3.15 meter
Beam:	11 ft - 3.35 meter	Dry Weight:	14100 ft
Deadrise Aft:	18.00 °		

### Tank Capacities

Fuel Tank:	166 gallons - 1 tank(s)	Holding Tank:	40 gallons - 1 tank(s)
Fresh Water Tank:	50 gallons - 1 tank(s)		

### Accommodations

Total Cabins:	-	Crew Cabins:	-
Total Berths:	-	Crew Berths:	-
Total Sleeps:	-	Crew Sleeps:	-
Total Heads:	1	Crew Heads:	-
Captains Cabin:	No		

## FEATURES

### 31 Performance Cruiser Standard Equipment

#### 31 Performance Cruiser Exterior

- NMMA Yacht/CE Certification
- Transferable 5-Year Formula Guard® Limited Protection Plan w/10-year Structural Warranty (USA only)
- Ashland Maxguard™ LE gelcoat in White or Soft White
- Imron® standard graphic in A or B
- Pressure-treated Perma Panel™ structural hull matrix
- Foam-filled hull cavities
- Chemically bonded & thru-bolted deck-to-hull joint
- Heavy-duty PVC gunwale w/stainless insert
- Integrated bow platform
- Electric windlass w/chain counter, 200' chain, polished stainless anchor, remote control & freshwater anchor washdown system
- Concealed anchor davit w/fiberglass chain locker
- Polished remote-control searchlight
- Stainless hardware & 316L welded rails
- Stainless custom Formula logo-cast cleats (10), fuel fills, polished Bomar® cabin venting hatches w/screens (2), forward Bomar cabin venting hatch w/integrated OceanAir® rollout SKYscreen & privacy shade & polished port

lights w/screens (4)

- Nonskid foredeck center walkway & walk-around
- Two cockpit-coordinated vinyl deck sunpads w/DriFast® foam & 316L rails
- Tinted, tempered curved-glass windshield w/center walk-thru, polished stainless frame & windshield wipers
- Radar arch w/mast light & white air horn
- Clarion® waterproof transom-mounted stereo control
- Extended integrated swim platform w/concealed stainless swim ladder & pull-up cleats
- Transom shower w/hot & cold controls
- Molded transom trunk w/pneumatic lifts, fender storage, four fenders, storage for cockpit tables & cushions
- 120V shorepower w/fail-safe galvanic isolator & two 30-amp cords
- Polished stainless shorepower, cable TV & phone inlets & chrome-finished city water inlet

### **31 Performance Cruiser Cockpit**

- Continuous molded deck & cockpit liner
- Molded in-dash forward deck access steps w/316L stainless handrail
- Molded fiberglass dash in Gray or Morning Sand w/high gloss Dark Woodgrain or Charcoal Woodgrain dash panels, Ritchie® compass, Garmin® 547 GPS color chartplotter, digital depth sounder, Livorsi® illuminated instrumentation, domed w/chrome bezels, illuminated waterproof accessory rocker switches w/E-T-A® circuit breakers, auxiliary 12V outlet & tilt wheel in leather wrapped stainless
- Livorsi chromed shifters/throttles w/in-handle outdrive trim switch
- Bennett® trim tab switches & indicators
- Fingertip outdrive trim/trailer switches
- Clarion® dash-mounted stereo control, four 6 1/2" speakers w/polished stainless grilles, 200W amplification & iPod™/MP3 port
- Two dual USB charging ports
- 12 polished stainless drink holders
- Cockpit/swim platform blue/white LED courtesy lights w/remote control
- Integral 316L safety rails
- Weather-resistant cockpit seating featuring PreFixx® coating, Tenara® element-resistant thread, DriFast® foam & Star-Lite® XL synthetic marine panel construction
- Dual position twin command seating
- Port & aft U-shaped lounge seating w/fiberglass-lined storage, two color-coordinated dual-height cockpit tables w/Corian® tops & sunpad inserts
- Color-coordinated molded wetbar w/integrated sink, Corian countertop, trash container, 316L stainless safety rail, 120V GFCI outlet & fire extinguisher
- Disconnect switches for aux & start batteries
- Battery parallel emergency switch
- Custom patterned cockpit carpet
- Pneumatic-assist transom door
- Bimini top, front & side curtains w/easy-mount zippers & extended aft enclosure in color-coordinated non-fading Sunbrella® fabric w/Seamark™ vinyl undercoating

### **31 Performance Cruiser Cabin**

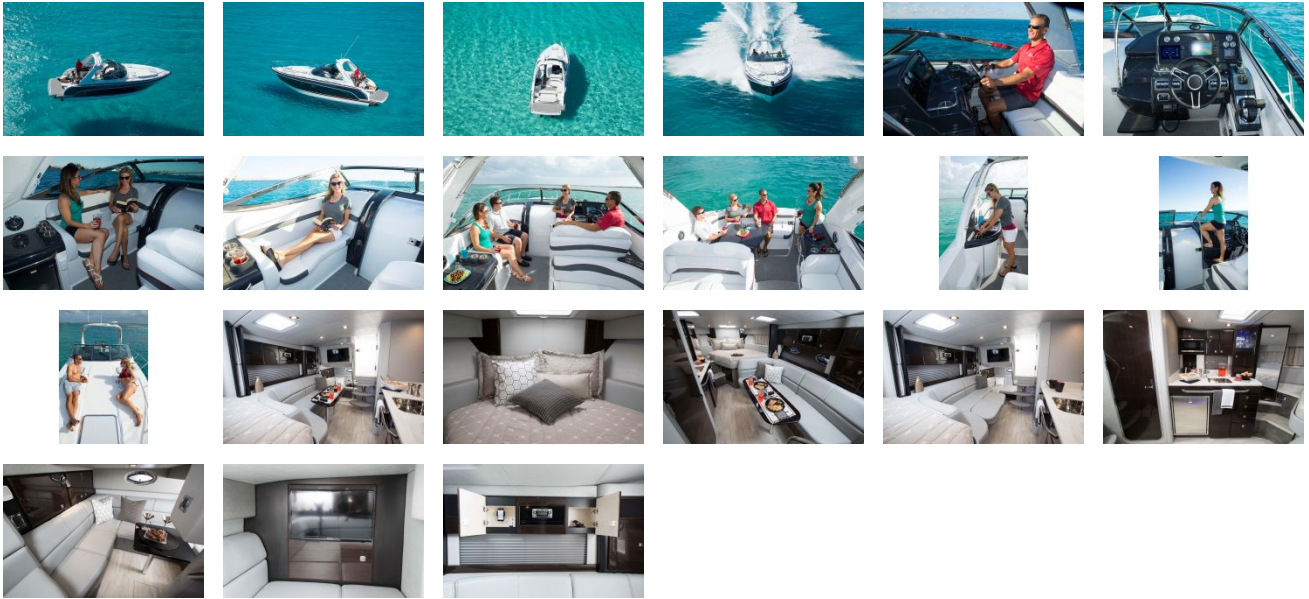
- Sliding/locking cabin door
- Solid wood cabin entry steps
- Light Cherry or Baltic Birch woodgrain-finish flooring
- Forward double berth w/Sensus® memory foam mattress, privacy curtain, drawer storage & pillow shams
- Cedar-lined forward hanging locker w/automatic light
- Curved Ultraleather™ sofa seating w/Ultrasede® lumbar, dual-height, high-gloss Bourbon Cherry, Ash or Wenge wood dining tables & filler cushions

- Custom décor pillows & draperies
- OceanAir Skysol pleated blind system in galley
- Cabinetry in high-gloss Bourbon Cherry, Ash or Wenge finish
- Illuminated 120V & 12V electrical panels
- 24" LCD HDTV/DVD combo player w/dockside access cord
- Clarion® AM/FM/CD stereo w/iPod/USB docking station, Bluetooth & two 6" x 9" speakers
- Subscription-ready Sirius™ Satellite Radio
- Ultraleather aft cabin lounge/double berth w/Ultrasuede lumbar & filler cushion, removeable high-gloss Bourbon Cherry, Ash or Wenge wood cocktail table & privacy enclosure
- Cedar-lined aft cabin hanging locker w/automatic light
- Aft storage compartment
- Complete galley in high-gloss Bourbon Cherry, Ash or Wenge finish w/storage & hardwood dovetailed drawers, full Corian countertop, blue LED-lit cabinet showcase w/tempered stemware & tumblers, beverage center, polished stainless sink w/swivel faucet, concealed 2-burner electric stove w/safety switch, 120V/12V stainless refrigerator, microwave oven, Krups® coffee maker, concealed in-counter trash container & fire extinguisher
- Demand water system w/50-gallon capacity
- 120V water heater w/heat exchanger
- Molded private head compartment w/molded vanity, lower doors in high-gloss Bourbon Cherry, Ash or Wenge finish, Corian counter, stainless sink, Light Cherry or Baltic Birch woodgrain flooring, VacuFlush® head w/40-gallon holding tank & dockside pumpout, shower & exhaust fan
- Two carbon monoxide detectors

### **31 Performance Cruiser Engine Room**

- Twin engine installation w/thru-bolted engine mounts
- Motorized hatch lift, courtesy lighting, fume detector & automatic fire extinguisher
- Three marine batteries w/retainers & 60-amp battery charger
- Disconnect switches for starting batteries
- Galvanic corrosion protection systems
- Bilge blowers, automatic bilge pump & high water alarm
- Bennett hydraulic trim tabs
- Stainless props

# GALLERY



**Formula Boats South**  
909 10th Street South Suite 102  
Naples, FL, US, 34102  
Phone: 239-331-2104

