



**Formula Boats South**  
909 10th Street South Suite 102  
Naples, FL, US, 34102  
Phone: 239-331-2104

# Formula 40 Performance Cruiser

Boat Type: Sport Cruiser



## OVERVIEW

From stem to stern, everything about your Formula Performance Cruiser is designed to meet your needs and maximize your fun and relaxation on the water. The Formula 40 Performance Cruiser is where excellence meets sophistication and superiority meets authenticity. It's time to board your very own dream boat, kick back and enjoy an outing with family or friends.

## SPECIFICATIONS

### Basic Information

Manufacturer:	Formula	Boat Type:	Sport Cruiser
Model:	40 Performance Cruiser	Hull Material:	Fiberglass
Year:	2018	Hull Type:	Deep Vee
Category:	Power		

### Dimensions & Weight

Length:	40.00 ft	Draft - max:	3 ft 8 in - 1.12 meter
LOA:	42 ft 7 in - 12.98 meter	Bridge Clearance:	16 ft 8 in - 5.08 meter
Beam:	12 ft 8 in - 3.86 meter	Dry Weight:	22750 ft
Deadrise Aft:	18.00 °		

### Tank Capacities

Fuel Tank:	248 gallons - 1 tank(s)	Holding Tank:	55 gallons - 1 tank(s)
Fresh Water Tank:	57 gallons - 1 tank(s)		

### Accommodations

Total Cabins:	1	Crew Cabins:	-
Total Berths:	-	Crew Berths:	-
Total Sleeps:	-	Crew Sleeps:	-
Total Heads:	1	Crew Heads:	-
Captains Cabin:	No		

## FEATURES

### 40 Performance Cruiser Standard Equipment

#### 40 Performance Cruiser Exterior

- NMMA Yacht/CE Certification
- Transferable 5-Year Formula Guard® Limited Protection Plan w/10-year Structural Warranty (USA only)
- Ashland Maxguard™ LE gelcoat in White or Soft White
- Imron® standard graphic in A or B
- Pressure-treated Perma Panel™ structural hull matrix
- Foam-filled hull cavities
- Chemically bonded & thru-bolted deck-to-hull joint
- Heavy-duty PVC gunwale w/stainless insert
- Integrated bow platform w/remote control halogen searchlight
- Electric windlass w/chain counter, 200' chain, polished stainless anchor, remote control & freshwater anchor washdown system
- Concealed anchor davit w/fiberglass chain locker
- Stainless hardware & 316L welded rails
- Stainless custom Formula logo-cast cleats (10), fuel fills, forward polished Bomar® cabin venting hatches w/screens (2), forward Bomar cabin venting hatches w/integrated OceanAir® rollout SKYscreens & privacy shades (3), polished port lights w/screens (6) & oversized HarbourView® portlight w/screen

- Nonskid foredeck center walkway & walk-around
- Two cockpit-coordinated vinyl deck sunpads w/adjustable chaise backrests, DriFast® foam & 316L rails
- Cockpit hardtop w/polished Bomar venting hatches, polycarbonate Lexan® front connectors, light mast flagpole w/American & Formula flags & white air horn
- Tinted, tempered curved-glass windshield w/center walk-thru, polished stainless frame & windshield wipers
- Clarion® waterproof transom-mounted stereo control
- Fiberglass swim platform w/concealed stainless swim ladder & pull-up cleats
- Transom shower w/hot & cold controls
- Molded fiberglass transom trunk w/pneumatic lifts, fender storage, four fenders, line storage & storage for cockpit tables & cushions
- 120V shorepower w/fail-safe galvanic isolator & two 30-amp cords
- Polished stainless shorepower, cable TV & phone inlets & chrome-finished city water inlet

#### **40 Performance Cruiser Cockpit**

- Continuous molded deck & cockpit liner
- Molded in-dash forward deck access steps w/316L stainless handrail
- Molded fiberglass dash in Gray or Morning Sand w/high gloss Dark Woodgrain or Charcoal Woodgrain panels, Ritchie® compass, Raymarine® e7D widescreen color chartplotter w/digital depth sounder, Volvo® EVC system w/7" color display, illuminated waterproof accessory rocker switches w/E-T-A® circuit breakers, auxiliary 12V outlet, tilt wheel in leather wrapped stainless & lockable under-dash storage compartment
- Electronic shift & throttle controls
- Volvo IPS joystick docking system
- QL trim tab switches & indicators
- Clarion dash-mounted stereo control, iPod™/MP3 port, six 6 1/2" JL Audio® blue LED lighted chrome-finished speakers, 200W amplification & 200W cockpit subwoofer
- Two dual USB charging ports
- 14 polished stainless drink holders
- Cockpit/swim platform blue/white LED courtesy lights w/remote control
- Integral 316L safety rails
- Weather-resistant cockpit seating featuring PreFixx® coating, Tenara® element-resistant thread, DriFast® foam & Star-Lite® XL synthetic marine panel construction
- Dual position twin command seating w/center storage compartment
- Port lounge w/fiberglass-lined storage
- Aft U-shaped lounge seating w/fiberglass-lined storage, two color-coordinated dual-height cockpit tables w/Corian tops & sunpad inserts
- Color-coordinated molded wetbar w/integrated sink, Corian countertop, 120V/12V pullout refrigerator w/stainless front, trash container, 316L safety rail, 120V GFCI outlet & fire extinguisher
- Disconnect switch for auxiliary 12V power
- Custom patterned cockpit carpet
- Pneumatic-assist transom door
- Front & side curtains w/easy-mount zipper connectors & aft enclosure in color-coordinated non-fading Sunbrella® fabric w/Seamark™ vinyl undercoating

#### **40 Performance Cruiser Cabin**

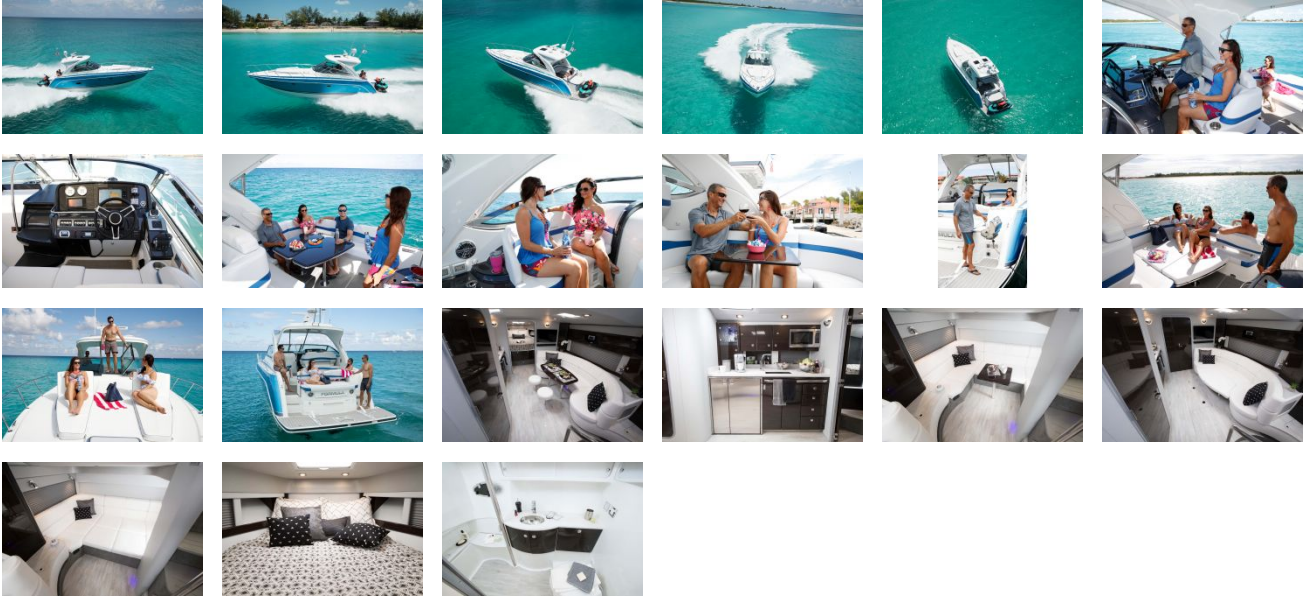
- Sliding/locking cabin door
- Solid wood cabin entry steps
- Light Cherry or Baltic Birch woodgrain-finish flooring throughout cabin
- Private forward stateroom w/double high-gloss Bourbon Cherry, Ash or Wenge finish doors, centerline bed w/Sensus® memory foam mattress & four drawers below, custom quilted bedspread w/matching pillow shams, bed linens & individual reading lights

- OceanAir Skysol pleated blind system in galley, dinette, forward stateroom & aft cabin
- Forward cabin 19" LCD HDTV/DVD combo player
- Mirrored, lighted starboard cedar-lined hanging locker & port valet w/shelving & hardwood dovetailed drawers
- Curved Ultraleather™ sofa seating w/Ultrasuede® lumbar, dual-height, high-gloss Bourbon Cherry, Ash or Wenge wood dining table, filler cushion & two Ultraleather pedestal dining stools
- Custom décor pillows & draperies
- Cabinetry in high-gloss Bourbon Cherry, Ash or Wenge finish
- 18,000 BTU reverse cycle air conditioner w/digital climate control
- Illuminated 120V & 12V electrical panels
- 32" LED/LCD HDTV/DVD w/Blu-ray Disc player & WiFi in main salon w/mini sound bar w/subwoofer & dockside access cord
- Clarion® AM/FM/CD stereo w/iPod/USB docking station, Bluetooth & four 6 1/2" speakers w/200W amplification & 8" subwoofer w/100W amplification
- Subscription-ready Sirius™ Satellite Radio
- Forward stateroom volume control
- Ultraleather aft cabin lounge/double berth w/Ultrasuede lumbar, removeable high-gloss Bourbon Cherry, Ash or Wenge wood cocktail table, filler cushion & privacy enclosure
- Removeable high-gloss Bourbon Cherry, Ash or Wenge wood cocktail table
- Cedar-lined aft cabin hanging locker w/automatic light
- Built-in WalVac® sweeper system w/easy access wall plate
- In-floor storage compartments
- Complete galley in high-gloss Bourbon Cherry, Ash or Wenge finish w/storage & hardwood dovetailed drawers, full Corian countertop, blue LED-lit cabinet showcase w/tempered stemware & tumblers, beverage center w/Krups® coffee maker, polished stainless sink, concealed 2-burner electric stove w/safety switch, 120V/12V stainless refrigerator/freezer, polished stainless microwave oven, concealed in-counter trash container, water level gauge & fire extinguisher
- Demand water system w/57-gallon capacity & one-point water fill for freshwater tank and/or city water
- 120V water heater w/heat exchanger
- Molded private head compartment w/molded vanity, lower doors in high-gloss Bourbon Cherry, Ash or Wenge finish, Corian counter, polished stainless sink, Light Cherry or Baltic Birch woodgrain flooring, VacuFlush® head w/55-gallon holding tank & dockside pumpout, separate shower stall w/hinged curved acrylic door, hinged Corian seat, exhaust fan & custom-woven towels
- Cabin bilge pump w/high water alarm
- Three carbon monoxide detectors

#### **40 Performance Cruiser Engine Room**

- Twin Volvo IPS engine installation
- Motorized hatch lift, courtesy lighting, fume detector & automatic fire extinguisher
- Integrated quick-access engine hatch
- Twin start & aux batteries w/retainers & 80-amp battery charger
- Disconnect switches for starting batteries
- Battery parallel emergency switch
- Galvanic corrosion protection systems
- Low-noise rotary bilge blowers, two automatic bilge pumps & high water alarm
- QL trim tabs
- Nibral props
- 8.5 KW/120V Kohler® diesel generator w/sound shield & battery

## GALLERY



**Formula Boats South**  
909 10th Street South Suite 102  
Naples, FL, US, 34102  
Phone: 239-331-2104