



Formula Boats Northeast
692 S Wellwood Ave
Lindenhurst, NY 11757 US
Phone: 631 574-8811

Formula 45 Yacht

Boat Type: Motor Yacht



OVERVIEW

The Formula 45 Yacht boasts state-of-the-art construction, unrivaled craftsmanship, luxurious amenities and nothing but the finest materials in every detail. With a length of 45-feet minus the bow platform and a 13-foot, 11-inch beam, our 45-foot yacht is unlike anything else you'll see on the water. This is where excellence meets sophistication, and superiority meets authenticity. Sail away—to anywhere you want to go in our luxury sport yachts.

One element that makes the Formula 45 Yacht really stand out is its coupe-like top design that features a motorized sunroof which offers unparalleled views. Like the sunroof, the yacht's windshield offers spectacular views that are only enhanced by the lack of supports at the front and the sides. This windshield design is the first of its kind in the industry, and it provides a panoramic view you can't miss.

SPECIFICATIONS

Basic Information

| | | | |
|---------------|----------|----------------|-------------|
| Manufacturer: | Formula | Boat Type: | Motor Yacht |
| Model: | 45 Yacht | Hull Material: | Fiberglass |
| Year: | 2018 | Hull Type: | Deep Vee |
| Category: | Power | | |

Dimensions & Weight

| | | | |
|---------------|--------------------------|-------------------|------------------------|
| Length: | 45.00 ft | Draft - max: | 3 ft 3 in - 0.99 meter |
| LOA: | 48 ft 2 in - 14.68 meter | Bridge Clearance: | 16 ft 1 in - 4.9 meter |
| Beam: | 13 ft 11 in - 4.24 meter | Dry Weight: | 31800 ft |
| Deadrise Aft: | 18.00 ° | | |

Tank Capacities

| | | | |
|-------------------|-------------------------|---------------|------------------------|
| Fuel Tank: | 350 gallons - 1 tank(s) | Holding Tank: | 78 gallons - 1 tank(s) |
| Fresh Water Tank: | 100 gallons - 1 tank(s) | | |

Accommodations

| | | | |
|-----------------|----|--------------|---|
| Total Cabins: | 1 | Crew Cabins: | - |
| Total Berths: | - | Crew Berths: | - |
| Total Sleeps: | - | Crew Sleeps: | - |
| Total Heads: | 1 | Crew Heads: | - |
| Captains Cabin: | No | | |

FEATURES

45 Yacht Standard Equipment

45 Yacht Exterior

- NMMA Yacht Certification
- Transferable 5-Year Formula Guard® Limited Protection Plan w/10-year Structural Warranty (USA only)
- Ashland Maxguard™ LE gelcoat in White or Soft White
- Imron® Standard graphic in A or B
- Molded structural grid hull matrix
- Chemically bonded & thru-bolted deck-to-hull joint
- Custom PVC gunwale w/1 1/2" stainless insert
- Integrated bow platform w/remote-control halogen searchlight
- Electric windlass w/chain counter, 200' chain, polished stainless anchor, remote control & freshwater anchor washdown system
- Concealed anchor davit w/molded fiberglass chain locker
- Stainless hardware & 316L welded rails
- Stainless custom Formula logo-cast cleats (10), polished Bomar® cabin venting hatch w/integrated OceanAir® rollout SKYscreen & privacy shade, venting polished portlights w/screens (6) & oversized HarbourView® port lights w/screens (2)
- 316L stainless blue LED lighted bowrail w/pennant staff & midlevel lifeline cables

- Nonskid foredeck center walkway & walk-around coverboards
- Two cockpit-coordinated vinyl deck sunpads w/adjustable chaise backrests, DriFast® foam & 316L rails
- Coupe top w/tinted, tempered curved-glass windshield w/windshield wipers & washers, vented center walk-thru door & side vents, large, motorized coupe-top sunroof, dual flagpole w/American & Formula flags & white dual air horn
- Clarion® waterproof transom-mounted stereo control w/two 6 1/2" JL Audio® blue LED lighted chrome-finished speakers
- Full-width swim platform w/concealed stainless swim ladder, swim rails & pull-up cleats
- Transom shower w/single-lever temperature control
- 120V/240V shorepower w/fail-safe galvanic isolator & 50-amp cord w/Glendinning motorized extend/retract & storage system w/remote control
- Polished stainless shorepower, cable TV & phone inlets & chrome-finished city water inlet

45 Yacht Cockpit

- Continuous molded deck & cockpit liner
- Molded in-dash forward deck access steps w/316L stainless handrail
- Molded fiberglass dash in Gray or Morning Sand w/high gloss Dark Woodgrain or Charcoal Woodgrain dash panels, Ritchie® compass, Raymarine™ e125 GPS widescreen color chartplotter w/depth sounder, Volvo® 7 ? color engine display, fuel gauges, Raymarine™ i70 color graphic information display, illuminated waterproof accessory rocker switches w/E-T-A® circuit breakers, auxiliary 12V outlet, tilt wheel in leather wrapped stainless & under-dash storage locker
- VHF radio w/antenna
- Electronic shift & throttle controls
- Volvo IPS joystick docking system
- QL trim tab switches & indicators
- Clarion® weather resistant dash-mounted marine AM/FM/CD stereo, Bluetooth, six 6 1/2" JL Audio® blue LED lighted chrome-finished speakers, 600W amplification, 200W subwoofer & iPod™/MP3 port
- Subscription-ready Sirius™ Satellite Radio
- Two dual USB charging ports
- 17 polished stainless drink holders
- Cockpit/swim platform blue/white LED courtesy lights w/hand-held remote control
- Integral 316L stainless safety rails
- Weather-resistant cockpit seating featuring Pre-Fixx® coating, Tenara® element-resistant thread, DriFast foam & Star-Lite® XL synthetic marine panel construction
- Twin command seating w/dual-position helm & companion seats w/center storage compartment
- Curved, extended port lounge
- Mid-cockpit storage locker for cockpit tables & canvas enclosures
- Aft U-shaped lounge seating w/fiberglass-lined fender storage (2 included) & two color-coordinated dual-height Corian® tables & filler cushions
- Integrated side-entry boarding step
- Aft facing sun lounge w/table cushion & fender (2 included) storage below – converts to full-length sunpad
- Color-coordinated molded wetbar/beverage center w/integrated sink, flush Corian countertop, 120V ice maker/refrigerator combo unit, in-counter trash container, ice chest, 316L stainless rail, 120V GFCI outlet & fire extinguisher
- Disconnect switch for auxiliary 12V power
- PFD storage locker w/Corian countertop
- Custom patterned cockpit carpet
- Pneumatic-assist curved transom door
- Forward cockpit drop curtain w/easy-mount zipper connections in color-coordinated non-fading Sunbrella fabric w/SeaMark™ vinyl undercoating

45 Yacht Cabin

- Curved, sliding/locking cabin door
- Solid wood cabin entry steps
- Light Cherry or Baltic Birch woodgrain-finish cabin flooring throughout
- Twin custom skylights
- High-gloss Bourbon Cherry, Ash or Wenge finish cabinetry throughout
- Blue LED accent lighting throughout cabin

45 Yacht Salon

- Ultraleather™ sofa seating w/Ultrasede™ lumbar – converts to double berth
- Adjustable-height high-gloss Bourbon Cherry, Ash or Wenge inlaid dining table
- Custom décor pillows
- Two Ultraleather pedestal dining stools
- OceanAir Skysol pleated blind system
- 46" 3D 1080p LED/LCD HDTV w/Bose® Lifestyle® surround sound home theater system, five double-cube speakers, powered subwoofer module & 3D Blu-ray Disc Player w/WiFi
- Two iPod docking stations
- Carbon monoxide detector
- 18,000 BTU reverse cycle air conditioner w/digital climate control
- Built-in WalVac® sweeper system w/easy access wall plate

45 Yacht Galley

- L-shaped galley w/high-gloss Bourbon Cherry, Ash or Wenge finish cabinetry, dovetailed hardwood drawers, full Corian countertop, double-bowl stainless sink w/swivel faucet, 2-burner electric stove w/flush Corian cover & safety switch, exhaust fan, brushed stainless convection/microwave oven, Krups® coffee maker, 120V/12V upright refrigerator/freezer w/brushed stainless panels & concealed trash container
- Blue LED-lit showcase w/wine rack, tempered stemware & tumblers
- Fire extinguisher
- Demand water system w/one-point water fill for 100-gallon freshwater tank and/or city water
- 120V water heater w/heat exchanger

45 Yacht Owner's Private Stateroom

- Pocket entry door w/full-length mirror
- Integrated OceanAir rollout SKYscreen & privacy shade for cabin hatch
- Owners' centerline bed w/Sensus® memory foam mattress, storage beneath, four dovetailed hardwood drawers & individual reading lights w/custom quilted bedspread, pillow shams, bed linens & two custom-woven towel sets
- Two cedar-lined hanging lockers w/automatic lighting & electronic security safe
- 22" LED/LCD HDTV w/Blu-ray Disc Player w/WiFi
- Bose sound system w/Bose speakers & remote control
- 10,000 BTU reverse-cycle air conditioner w/digital climate control
- Carbon monoxide detector
- Owners' private head compartment w/contoured, high-gloss Bourbon Cherry, Ash or Wenge finish vanity, full vanity wall mirror, padded vanity seat (hinges to reveal head), Corian countertop, vanity drawer, deep custom sink w/wall mount faucet, overhead cabinetry storage, wall mirror, tile-pattern Corian flooring, exhaust fan & porcelain VacuFlush® head unit w/78-gallon holding tank & dockside pumpout
- Separate shower compartment w/adjustable-height shower head, Corian seat, mirrored storage cabinet, towel bars, robe hooks, exhaust fan & tile-pattern Corian flooring

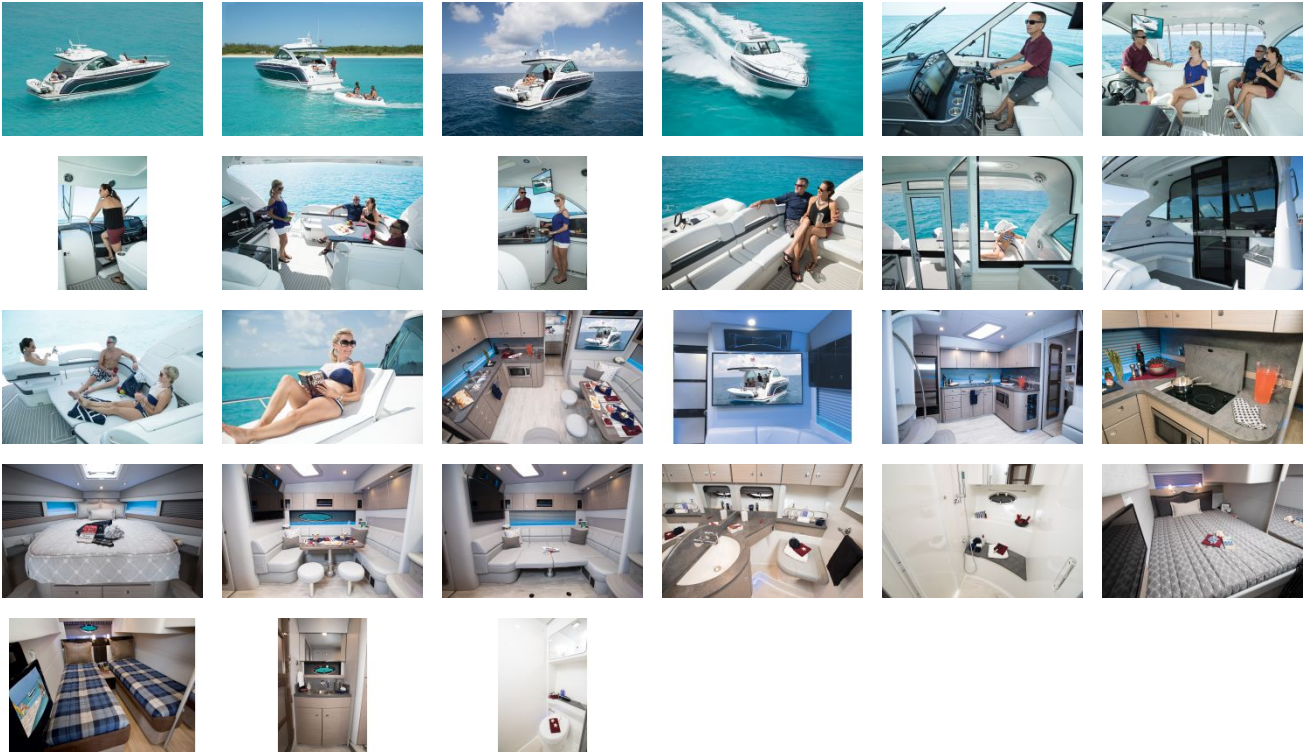
45 Yacht Private Guest Stateroom

- Private guest stateroom w/twin beds—adjust to queen bed w/hideaway filler cushion w/bed linens
- Under-berth storage areas
- Mirrored, cedar-lined hanging locker w/automatic lighting
- 24" ? LED/LCD HDTV/DVD combo player
- Private head compartment w/shower & porcelain VacuFlush head unit
- High-gloss Bourbon Cherry, Ash or Wenge finish vanity w/Corian countertop, mirrored storage cabinet & stainless sink w/wall-mount faucet
- Two custom-woven towel sets
- Operating systems electrical panel w/courtesy lights, 120V/240V & 12V monitoring panel, remote engine starting battery switches, remote battery parallel emergency switch, generator control switching & freshwater tank gauge
- Cabin bilge pump w/high water alarm
- Carbon monoxide detector

45 Yacht Engine Room

- Twin diesel Volvo IPS 600 engine installation
- 11.5 KW diesel generator w/sound shield & dedicated battery
- Motorized engine hatch lift
- Integrated quick-access engine hatch w/stainless steel ladder
- Engine room lighting & automatic fire extinguishing system
- Remote 12V oil change system for engines & generator
- Four starting & two auxiliary marine batteries w/battery retainers
- 80 & 40-amp battery chargers
- Galvanic corrosion protection system
- Volvo QL trim tabs
- Low-noise rotary bilge blowers, two automatic bilge pumps & high water alarm
- Nibral props

GALLERY



Formula Boats Northeast
692 S Wellwood Ave
Lindenhurst, NY 11757 US
Phone: 631 574-8811