



Formula Boats Northeast
692 S Wellwood Ave
Lindenhurst, NY 11757 US
Phone: 631 574-8811

Formula 382 FASTech

Boat Type: Cruiser



OVERVIEW

Excitement. In life, and on the water. It's part of what you do and how you live. That's why we offer the FAS3TECH series of pure powerboats. Sleek, muscular and breathtaking, the Formula 382 FAS3TECH is the purest, not to mention fastest, reflection of the Formula offshore racing heritage.

SPECIFICATIONS

Basic Information

Manufacturer:	Formula	Boat Type:	Cruiser
Model:	382 FASTech	Hull Material:	Fiberglass
Year:	2018	Hull Type:	Deep Vee
Category:	Power		

Dimensions & Weight

Length:	38.00 ft	Draft - max:	2 ft 9 in - 0.84 meter
LOA:	38 ft 2 in - 11.63 meter	Bridge Clearance:	5 ft 6 in - 1.68 meter
Beam:	8 ft 3 in - 2.51 meter	Dry Weight:	10450 ft
Deadrise Aft:	24.00 °		

Tank Capacities

Fuel Tank:	176 gallons - 1 tank(s)	Holding Tank:	3 gallons - 1 tank(s)
Fresh Water Tank:	19 gallons - 1 tank(s)		

Accommodations

Total Cabins:	-	Crew Cabins:	-
Total Berths:	-	Crew Berths:	-
Total Sleeps:	-	Crew Sleeps:	-
Total Heads:	-	Crew Heads:	-
Captains Cabin:	No		

FEATURES

382 FASTech Standard Equipment

382 FASTech Exterior

- NMMA Yacht/CE Certification
- Transferable 5-year Formula Guard® Limited Protection Plan w/10-year Structural Warranty (USA only)
- Ashland MaxGuard™ LE gelcoat in White
- Silver Series three-color Imron® design #1, #2 or #3 in Antigua, Bayport or Stealth
- FASTech hull
- Foam-filled continuous molded structural grid
- Chemically bonded & thru-bolted deck-to-hull joint
- Heavy-duty PVC gunwale w/stainless insert
- Stainless hardware & 316L welded rails
- Stainless fuel fill
- Four Bomar® cabin venting hatches w/screens
- Tinted, tempered curved-glass windshield w/polished stainless frame
- Concealed air horn
- Clarion® waterproof transom-mounted stereo volume control
- Integrated swim platform w/concealed stainless swim ladder
- Transom shower
- Polished stainless 120V shorepower w/fail-safe galvanic isolator & 30-amp cord, cable TV, telephone inlets

382 FASTech Cockpit

- Continuous molded deck & cockpit liner
- Molded fiberglass dash in Silver w/Carbon-fiber composite dash panels in black, blue, red or silver, Ritchie® 5" offshore compass, digital depth sounder, Livorsi® Oversized Mega Series backlit instrumentation w/polished stainless bezels, tilt steering wheel w/blue, red or silver accent inserts & illuminated waterproof accessory rocker switches w/E-T-A® circuit breakers

- Safety ignition tether
- Latham® external hydraulic steering
- Livorsi chromed shifters/throttles w/in-handle outdrive trim switch
- Fingertip outdrive trim override & K-plane switches w/indicators
- Clarion waterproof dash-mounted stereo control, iPod™/MP3 port & four 6 1/2" JL Audio® blue LED lighted chrome-finished speakers, 600W amplification & 200W cockpit subwoofer
- Port dash locker w/vanity mirror & dual USB charging port
- Built-in trash receptacle
- Two auxiliary 12V outlets
- Polished stainless drink holders
- Blue/white LED courtesy lighting
- Integral 316L stainless safety rails
- Weather-resistant cockpit seating featuring PreFixx® coating, Tenara® element-resistant thread, DriFast® foam & Star-Lite® XL synthetic marine panel construction
- McLeod® electric-assist offshore-style bolsters
- McLeod® electric-assist footrest
- Aft lounge seating for four w/storage beneath
- Trunk w/shorepower hookup, cord storage & transom shower
- Side coaming storage
- Fire extinguisher
- Battery disconnect switches for start & aux batteries
- Battery parallel emergency switch
- Custom cockpit carpet w/sculptured FASTech logo
- All-weather cockpit cover in color-coordinated non-fading Sunbrella® fabric w/SeaMark™ vinyl undercoating

382 FASTech Cabin

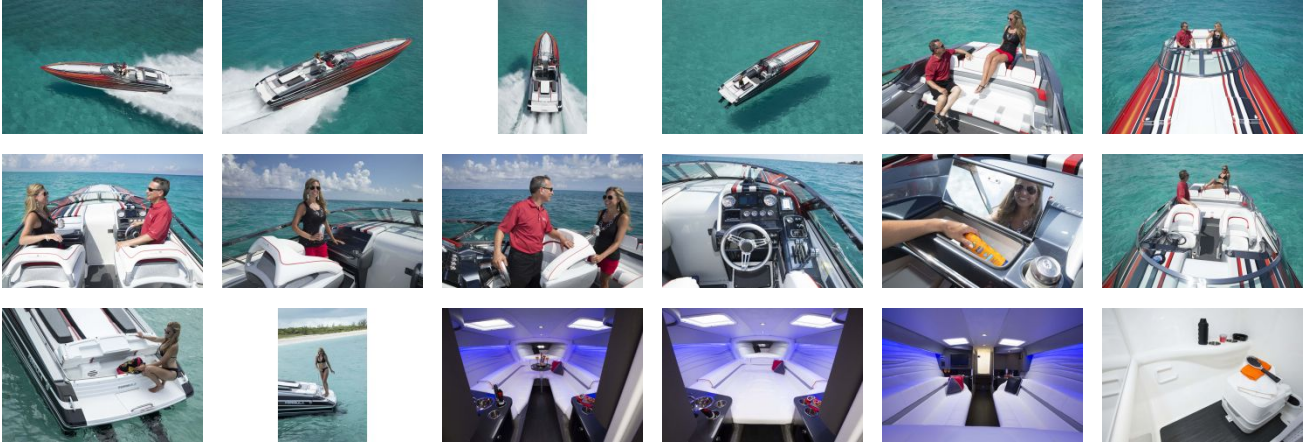
- Sliding/locking cabin door
- Charcoal woodgrain-finish flooring throughout cabin
- Solid wood cabin entry step
- Ultraleather™ double bow berth
- Ultraleather wrap-around lounge seating/double berth w/filler cushions
- Décor pillows
- Removable Corian® cocktail table w/four polished drink holders
- Remote-control multi-color LED accent lighting
- Clarion® AM/FM/CD stereo w/iPod/USB docking station, Bluetooth & two 4" x 10" speakers
- Subscription-ready Sirius™ Satellite Radio
- 120V/12V electrical panels
- Entertainment center w/polished stainless sink, Corian countertop, demand water system, 120V/12V refrigerator & concealed trash receptacle
- 19" LCD HDTV/DVD combo player w/concealed antenna & dockside access cord for cable TV
- Private head compartment w/dockside pumpout & exhaust fan
- Carbon monoxide detector

382 FASTech Engine Room

- Twin engine installation w/thru-bolted race-style engine mounts
- Motorized hatch lift
- Courtesy lighting, fume detector & automatic fire extinguisher
- Engine freshwater flush system
- Two marine batteries w/retainers & 60-amp battery charger
- Galvanic corrosion protection systems

- Bilge blowers, automatic bilge pumps & high water alarm
- Mercury Racing K-Planes®
- Forward mounted trim & tab pumps
- External stainless tie bar
- Stainless props
- CORSA™ polished stainless exhaust system w/silencer tips

GALLERY



Formula Boats Northeast
692 S Wellwood Ave
Lindenhurst, NY 11757 US
Phone: 631 574-8811