



South Jersey Yacht Sales
900 Ocean Drive
Cape May, NJ 08204
Phone: 609-884-1600

Albemarle 27 Dual Console

Boat Type: Express



OVERVIEW

Family time is a treasure. Albemarle Boats understands this and has designed the 27 Dual Console to meet the demands of boating families wanting to do all sorts of on the water activities. Her deep-v hull and solid fiberglass construction offer the soft dry ride necessary to run in big open water. After all, that is what Albemarle is known for. She also boasts everything needed for coastal family fun. Anchoring at the sandbar, waterskiing, diving, cruising, dinner by boat... the list goes on and on.

The 27DC is loaded with amenities and truly built for comfort and convenience. There is comfortable seating from bow to stern providing ample room for the entire family. An electric head, freshwater sink, and cockpit shower have the necessities covered.

The starboard console houses a bunk and a cavernous dry storage area for larger items like rods and wakeboards. Charging ports are located throughout the boat in case you forget to leave your electronic devices at home.

In addition to seating, the cockpit offers a huge insulated in-deck box that can be used for storage or to hold your catch. There is also an insulated multi-purpose transom box that is also plumbed as a livewell and a 64 quart

cooler beneath the aft-facing seat. A transom door makes it easy to get from the cockpit to the integrated swim platform and ladder. The optional hardtop, bow, and cockpit sun shades will keep you cool on hot summer days, and the full height windshield and custom enclosure will keep you dry and comfortable when the weather conditions deteriorate.

SPECIFICATIONS

Basic Information

Manufacturer:	Albemarle	Boat Type:	Express
Model:	27 Dual Console	Hull Material:	Fiberglass
Year:	2020	Hull Type:	Deep Vee
Category:	Power		

Dimensions & Weight

Length:	27.00 ft	Draft - max:	1 ft 8 in - 0.51 meter
LOA:	30 ft - 9.14 meter	Bridge Clearance:	-
Beam:	8 ft 8 in - 2.64 meter	Dry Weight:	8000 ft
Deadrise Aft:	24.00 °		

Tank Capacities

Fuel Tank:	170 gallons - 1 tank(s)	Holding Tank:	60 gallons - 1 tank(s)
Fresh Water Tank:	23 gallons - 1 tank(s)		

Accommodations

Total Cabins:	-	Crew Cabins:	-
Total Berths:	-	Crew Berths:	-
Total Sleeps:	-	Crew Sleeps:	-
Total Heads:	-	Crew Heads:	-
Captains Cabin:	No		

FEATURES

Hull Length 27'4"	ELECTRICAL
L.O.A: 30'0"	12V LED Lighting
Beam: 8'8"	Battery Paralleling Switch
Draft of Hull: 20"	Bonded Electrical System
Draft Engines Down: 31"	Circuit Breaker Protected
Dry Weight: 8,000 lbs	Throughout
Deadrise: 24 degrees	Color-coded Wiring System
Fuel Capacity: 190 gal.	Engine Alarm System
Cockpit Fishbox: 60 Gal.	Heavy-duty Marine Batteries(3) with
Transom Livewells: 18 Gal.	

Ice/Cooler Box: 16 Gal.
Cockpit Size: 58 sq. ft.
Water Capacity: 23 gal.
Height from waterline: 6'3"-11"
Power: Twin Yamaha 200/250

CONSTRUCTION

Armstrong Custom Twin Engine
Bracket
Bronze Garboard Drain plug
Bonded and Mechanically Fastened
Hull, Deck, and Liner
Composite, Fiberglass
Encapsulated Stringer System
Hand Laid Solid Fiberglass
Construction with Premium Gelcoat
Finish and Vinylester Resin
Molded, One-piece Deck and
Cockpit Liner with Non-Skid
Heavy Duty Vinyl Rub Rail with
Stainless Steel Insert
Solid Fiberglass Hull with 10 Year
Structural Warranty

MECHANICAL

Aluminum Fuel Tank, Thick Walled
with Cold Tar Epoxy Coating
Bilge Pumps (2) with Indicator
Lights, Float Switches (2), High-
water Alarms (2)
Double Stainless Steel Hose
Clamps below Waterline
Flanged Bronze Seacocks on All
Through-Hulls Below Water Line
Flexible Fuel Lines
Fuel/ Water Separator Filters
Pressurized Water System
Stainless Steel Through-Hull
Fittings above Waterline
Trim Tabs with Indicator and Auto
Retract

Trays
Horn, Electric
LED Navigational Lighting
Lighted Rocker Style Switch Panel
Pre-wiring for Electronics
Remote Battery Switches

COCKPIT

Aft Facing Cockpit Seat
Coaming Pads, Port and Starboard
Cockpit Shower
Custom Cockpit Upholstery with
Dri-Fast Foam
Drink Holders
Freshwater Washdown
In-deck Fishbox with Macerator
Pump-out System
Indirect LED Cockpit lighting
Molded Cabinet with Sink and
Storage/Tackle Drawers
Molded Fiberglass, Self-Bailing
Cockpit with Scuppers
Raw Water Washdown
Rod Storage under Starboard
Gunwale
Stainless Steel Flush-mounted
Drink/Rod holders
Transom Door
Transom Live Bait Well with
"Calming Blue" Gelcoat and LED
Light

HELM AREA

12 Volt Accessory Outlet / Multiple
USB Outlets
Dash Designed for Flush Mounted
Electronics
Drink Holders
Flush Mounted Compass with light
Footrests, Helm and Companion
Full Instrumentation with Digital
Engine Display and Fuel
Management
Helm Chair and Port Side Double
Bench Seat
Stainless Steel Steering Wheel

Weather-protected Switches and
Instruments with Backlights
Windshield with tempered glass and
Walk-Through Door
Windsheild Wipers

BOW AREA

Anchor Locker with Fiberglass Hatch
Anchor Roller, Stainless Steel
Through-Stem
Anchor, Stainless Steel with rode and
chain
12 Volt Accessory Outlet / Multiple
USB Outlets
Bench Seating, Port and Starboard
with Cushions
Bolster Cushions
Dry Storage under Port Side Seat,
Insulated
Stainless Steel Hand Rails
Wind Break Door

STARBOARD CONSOLE

Access to Dash and Electronic Wiring
Berth with Cushions
Dry Storage
Electrical Panel
LED Lighting
Lockable Rod Storage
Molded Non-Skid Flooring

PORT CONSOLE

Electric Head with Holding Tank
LED Lighting
Mirror
Molded Non-Skid Flooring
Storage and Medicine Cabinets
Solid Surface Countertop and Sink

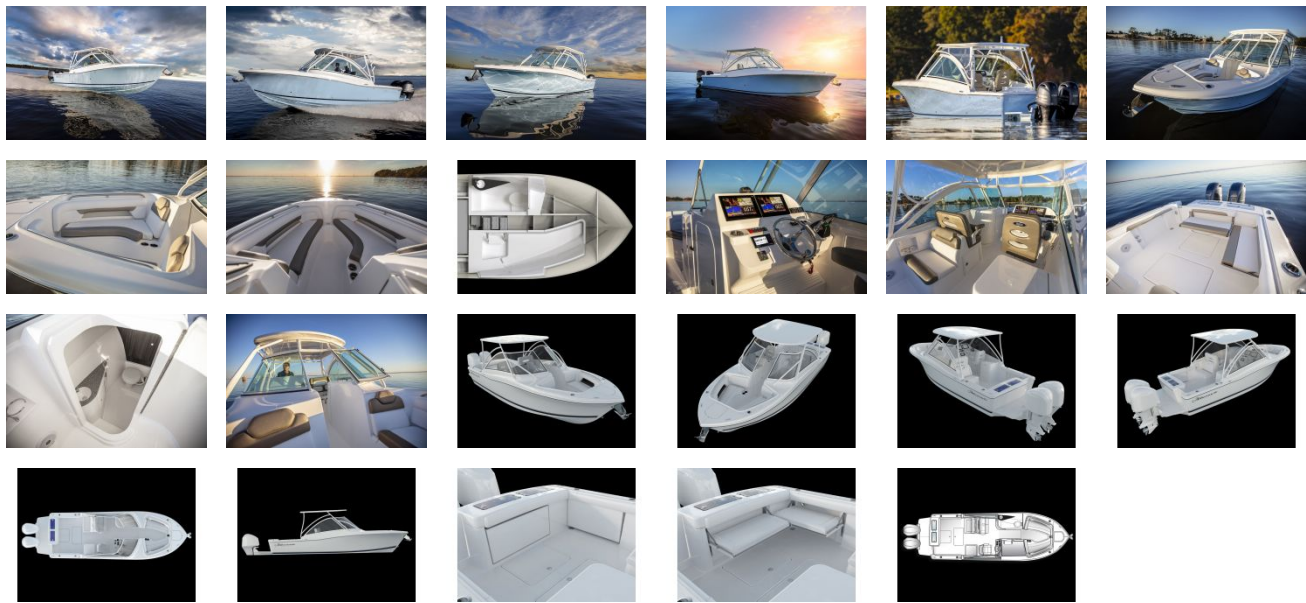
MISCELLANEOUS

Coast Guard Safety Kit
Stainless Steel, Flush Mounted Bow,
Spring and Stern Cleats
Stainless Steel Bow Eye
Stainless Steel Thru-bolted Deck
Hardware
Swim Ladder

POWER OPTIONS

Twin Yamaha 200 HP Engines
Twin Yamaha 250 HP Engines

GALLERY



South Jersey Yacht Sales
900 Ocean Drive
Cape May, NJ 08204
Phone: 609-884-1600