



Annapolis Yacht Sales
7350 Edgewood Rd.
Annapolis, MD 21403
Phone: 410.267.8181

Beneteau Oceanis 46.1

Boat Type: Cruiser



OVERVIEW

The Oceanis 46.1 boasts all the features of a large cruising yacht, with a rare balance between elegance, usable space and performance. Her stepped hull opens up an incredible amount of space inside and yet her seakeeping performance is still impressive. A large number of clever customizable fittings make her easy to sail and pleasantly comfortable.

The Oceanis 46.1 is based on a Finot-Conq plan, keeping the distinctive stepped hull of the 51.1. Apart from her performance at sea and the huge amount of space that set this boat apart, this architecture makes optimal use of the cockpit beam. An incredibly efficient deck plan makes her wonderfully safe and easy to use. The furling mast, self-tailing jib and all the halyards and sheets brought back to a single winch at each of the helm stations, make maneuvering simple when short-handed sailing.

Large hull portholes bring a considerable amount of natural light right into the center of the boat, so that you can truly enjoy the elegant interiors by Nautia Design. A choice of satin light oak or mahogany set the tone and create the interior atmosphere, which can be readily customized.

SPECIFICATIONS

Basic Information

Manufacturer:	Beneteau	Boat Type:	Cruiser
Model:	Oceanis 46.1	Hull Material:	
Year:	2020	Hull Type:	
Category:	Sail		

Dimensions & Weight

Length:	46.00 ft	Draft - max:	-
LOA:	47 ft 11 in - 14.61 meter	Bridge Clearance:	-
Beam:	14 ft 9 in - 4.5 meter	Dry Weight:	23356 ft
Deadrise Aft:	-		

Tank Capacities

Fuel Tank:	53 gallons - 1 tank(s)	Holding Tank:	-
Fresh Water Tank:	98 gallons - 1 tank(s)		

Accommodations

Total Cabins:	-	Crew Cabins:	-
Total Berths:	-	Crew Berths:	-
Total Sleeps:	-	Crew Sleeps:	-
Total Heads:	-	Crew Heads:	-
Captains Cabin:	No		

FEATURES

STANDARD EQUIPMENT

CONSTRUCTION

- Design made following European Directive requirements and according to CE certification
- Monolithic polyester contact hull
- Monolithic contact structural counter mould (Fabric - resin) bonded to the hull
- Injected deck construction in glass fiber and Saerform foam sandwich, covered with non-slip diamond pattern
- Cast iron keel fixed with bolts and stainless steel backing plates
- Twin rudders affixed with stainless steel stock
- White hull - Grey metal hull decoration
- 8 Hull portholes

DECK EQUIPMENT

RIGGING

- Anodized aluminium mast, deck stepped with in-mast furling system, 2 Aft swept spreaders
- Anodized aluminum boom
- Cathedral type single-strand stainless steel standing rigging
- Split backstay
- Rigid boom vang
- Self-tacking jib with on-deck furler
- 2 Stand Up mainsheet blocks on the coachroof
- 1 Self-tacking jib track with traveller
- All lines lead back to the helm stations (except boom topping lift and genoa halyard)
- Complete running rigging: Main halyard, Genoa halyard with cleat on mast, Boom topping lift with cleat on mast, Mainsheet, 1 Self-tacking jib sheet
- 6 Clutches
- Halyard covers
- 2 Flag halyards

WINCHES

- 1 Self tailing winch (H40.2 STA) at each helm station
- 1 Aluminium Speed Grip winch handle
- 2 Winch handle holders

SAILS

- Furling mainsail Dacron, with UV protection Natural, horizontal cut
- Self-tacking jib Dacron with UV protection Natural, horizontal cut

MOORING - ANCHORING GEAR

- Self-draining chain locker - Clench bolt - Hatch cover
- Single roller stainless steel bow fitting with offset roller
- 12 V - 1 000 W vertical electric windlass - Remote control
- 6 Aluminum mooring cleats, Length: 400 mm / 15 3/4" - Stainless steel chafing plate

SAIL LOCKER

- Access by polyester cover, Passage width: 65 x 50 cm / 2'2" x 1'8"
- Stainless steel ladder
- Shelving unit

SAFETY ON DECK

- 1 Open stainless steel pulpit
- 2 Stainless steel aft pushpits
- 2 stainless steel handrails on coachroof
- 1 Ring lifebuoy bracket
- Welded ring on pushpit for flag
- Double life lines and stainless steel stanchions, 650 mm / 2' 2" - Side boarding gate on either side
- Emergency ladder on pushpit

COCKPIT

- Self-bailing cockpit

- 1 Watertight compartment under cockpit benches & 1 Wet locker
- 1 Locker in cockpit bottom
- 1 Gas compartment under port helmsman seat
- Natural solid wood slatted cockpit benches
- Solid wood slatted helm seats with starboard storage locker
- Foldaway helmsman foot chock
- 2 Steering wheel consoles: Stainless steel steering wheels (900 mm diameter / 2'11") - Anthracite leather covering
- Steering gear at the helm station - Steering line transmission system - Stainless steel handrail
- 2 Deck accesses for emergency tiller
- 1 Emergency tiller
- 1 Steering compass on the cockpit table
- Engine throttle and control panel on starboard
- Cockpit table, stainless steel support, 2 wooden flaps, lighting, 4 cupholders, stainless steel handrail, BIB storage
- 1 Cockpit shower with mixer tap
- 1 PMMA companionway door in 2 removable parts - Sliding hatch made of PMMA

SWIM PLATFORM / STERN DECK

- Fully opening transom, convertible into swim platform (2,65 m x 0,80 m / 8'8" x 2'7")
- Intermediate cockpit access step
- Manual control opening
- Natural solid wood decking on swim platform
- 1 Stainless steel, removable bathing ladder with dedicated stowage in the cockpit

INTERIOR

- Alpi Mahogany wood interior
- Parquet type laminated floors
- Interior cushions in cloth
- Padded lining in salon (Beige)
- Mattresses in the cabins, HR35kg/m³ foam

Standard version: 3 cabins 2 heads version

COMPANIONWAY

Headroom: 1,98 m / 6'6"

- Wooden salon companionway with molded wood hanging steps with non-slip surface
- 1 Stainless steel handrail with anthracite leather sheathing (to port)

SALON - STARBOARD

Headroom: 2,01 m / 6'7"

- U-shaped salon bench
- Salon table - wooden top
- Central seat facing the table, without backrest
- Mirror on bulkhead, at base of companionway
- Storage under bench seats
- Bookshelf against forward bulkhead

- 1 Electrical panel for access to electrical connections (to starboard)
- 2 Hull portholes
- 2 Coaming glazing
- 2 Opening deck hatches with mosquito screen/blind

CHART TABLE & SOFA - PORTSIDE

Headroom: 1,94 m / 6'4"

- Table with storage - molded wood fiddle - Laminated covering
- Meridian function seat facing the salon
- 1 Flexible and swivelling reading light
- 2 USB sockets
- 1 Hull porthole

GALLEY - PORTSIDE

Headroom: 1,94 m / 6'4"

- L-shaped kitchen
- Counter-top in Clay compact with Corian fiddles
- Stainless steel sink 2 rectangular basins - 1 Mixer tap with hot/cold water under pressure - Clay compact sink cover with cutting board function on back
- 1 Gas stove 2 burners - Stainless steel oven on gimbal - Stainless steel protection handrail
- 1 85 L ice box, top opening (without refrigeration unit)
- 1 130 L refrigerator (12 V), front opening
- Fitted cupboards and closed cubbyholes
- Bin under sink
- Low unit : 1 Drawer, 2 Doors against companionway bulkhead
- 1 Opening portlight with curtains in the coachroof side window
- 1 Hull porthole

OWNER'S CABIN

Headroom: 1,95 m / 6'5"

- Central double bed (2,00 m x 1,53 m x 1,23 m / 6'7" x 5' x 4')
- 2 Hanging lockers, Open storage compartment along the hull, 6 Upper lockers, 1 Drawer under the bed
- 1 Storage locker either side of the bed
- 2 Night tables
- 2 Flexible and adjustable bedside lamps
- 2 USB sockets
- 2 Flush deck hatches with mosquito screen/blind
- 2 Hull portholes with sliding blind

2 PRIVATE HEADS:

Headroom: 1,93 m / 6'4"

to port:

- Manual marine toilet
- 1 50 L / 13 US Gal Rigid holding tank
- 1 Polyester basin - Mixer tap
- 1 Cabinet - Mirror
- Toilet accessories
- 1 Deck hatch with mosquito screen/blind

to starboard:

- Shower with wooden seat, white polyester shower base
- 2 Storage closets
- 1 Deck hatch with mosquito screen/blind
- Sink with mixer tap

PORT AFT CABIN

Headroom: 1,92 m / 6'4"

- 1 Double bed (2,05 m x 1,40 m / 6'9" x 4'7")
- 1 Hanging locker - 2 Cupboard units - 1 Cubby hole locker
- 1 Bed access sideboard
- 2 Flexible and multi-directional reading lights at headboard
- 2 USB sockets
- 1 Hull porthole with sliding blind
- 1 Cockpit opening window with curtain under cockpit seats
- 1 Fixed cockpit window with curtain on the coaming

STARBOARD AFT CABIN

Headroom: 1,92 m / 6'4"

- 1 Double bed (2,05 m x 1,40 m / 6'9" x 4'7")
- 2 Cupboard units - 1 Cubby hole locker
- 1 Bed access sideboard
- 2 Flexible and multi-directional reading lights at headboard
- 2 USB sockets
- 1 Hull porthole with sliding blind
- 1 Cockpit opening window with curtain under cockpit seats
- 1 Fixed cockpit window with curtain on the coaming

OWNER'S HEAD - STARBOARD

Headroom: 1,92 m / 6'4"

- Access from the salon or the starboard aft cabin
- Separate shower - Self-draining storage bin - 1 Mixer tap - White polyester shower base
- 1 Manual marine toilet
- 1 64 L / 17 US Gal Rigid holding tank
- 1 Polyester basin - 1 mixing tap hot/cold water
- 1 Cabinet + Storage space under the basin
- 2 Mirrors

- Toilet accessories
- 2 Opening ports on coaming with curtains on side windows

3 cabins 3 heads version

Large lengthways galley facing the salon instead of the starboard sofa.

Central unit against central seat, backrest function.

The starboard aft cabin hanging locker is reduced.

OWNER'S HEAD - PORTSIDE

- Access from the salon or the aft cabin
- 1 Manual marine toilet
- 1 64 L / 17 US Gal Rigid holding tank
- 1 Polyester basin - 1 mixing tap hot/cold water
- 2 Mirrors
- Toilet accessories
- 1 Opening portlight with curtains in the coachroof side window

LENGTHWAYS GALLEY COUNTER

- Counter-top in Clay compact with Corian fiddles
- Stainless steel sink 2 rectangular basins - 1 Mixer tap with hot/cold water under pressure - Clay compact sink cover with cutting board function on back
- 1 Gas stove 2 burners - Stainless steel oven on gimbal - Stainless steel protection handrail
- 1 85 L ice box, top opening (without refrigeration unit)
- 1 130 L refrigerator (12 V), front opening
- 3 Closed high shelves, 1 High open cubby hole locker
- Bin with access on the counter-top
- 1 Lower unit: 3 Storage drawer
- 1 Low unit: 1 Drawer 1 Door
- 1 Opening portlight with curtains in the coachroof side window
- 1 Hull porthole

4 cabins 4 heads version

The salon is unchanged. The cabins and heads are identical to version 3 cabins, 3 heads.

Forward: 2 cabins each with their private head.

5 cabins 3 heads version

The starboard head of the standard version is replaced by a cabin with bunk beds:

- Headroom: 1,92 m / 6'4"
- 2 Bunk beds: Top bunk (2,04 m x 0,67 m - 0,53 m / 6'8" x 2'2" - 1'9") - Bottom bunk (2,00 m x 0,60 m - 0,42 m / 6'7" x 2' - 1'5")
- Storage
- 1 Opening porthole with curtain

2 SYMMETRICAL FORWARD CABINS

Headroom: 1,95 m / 6'5"

- 1 Double bed (2 m x 1,40 m x 0,80 m / 6'7" x 4'7" x 2'7")
- 1 Hanging locker - 2 Closed high shelves, 2 Open cubbyholes, 1 Drawer under the bed
- 1 Swivelling reading light
- 1 Deck hatch with mosquito screen/blind
- 1 Hull porthole with sliding blind
- 2 USB sockets
- Access door to the head

ENGINE

- Engine Yanmar Diesel:
 - 57 HP/57 HP, Common Rail (standard)
 - 80 HP/80 HP, Common Rail (Option)
- Engine control at the starboard helm station - Control panel
- Engine compartment: Soundproofing foam - Ventilation: 3 air intakes and 1 forced air outlets
- 1 Alternator 12 V / 125 Amp
- 1 Rotomolded diesel tank 200 L / 53 US Gal (under starboard aft berth) - Electronic gauge - Low level alarm - 1 Deck filler
- Filters: Sea water - Diesel - Water separator
- Fixed three blade propeller
- 1 Engine access through companionway (opening with 2 gas pistons) - 2 Engine access through aft cabins

ELECTRICITY

- 12 V Circuit
- 2 Service batteries (120 Amp) - 1 Engine battery (120 Amp)
- 1 Load balancer
- 12 V Electrical panel (Fuses - Voltmeter - Water gauge - Fuel gauge - Battery warning - Fuel warning - Water warning)
- 3 230V Sockets
- 9 USB sockets
- 1 Shore power socket (230V)
- Lighting: Overhead lights - Reading lights - Reading light, flexible and multi-directional
- LED navigation lights: 1 Masthead light - 1 Steaming light - 1 Mooring light on masthead
- Wire runs for optional cables

PLUMBING

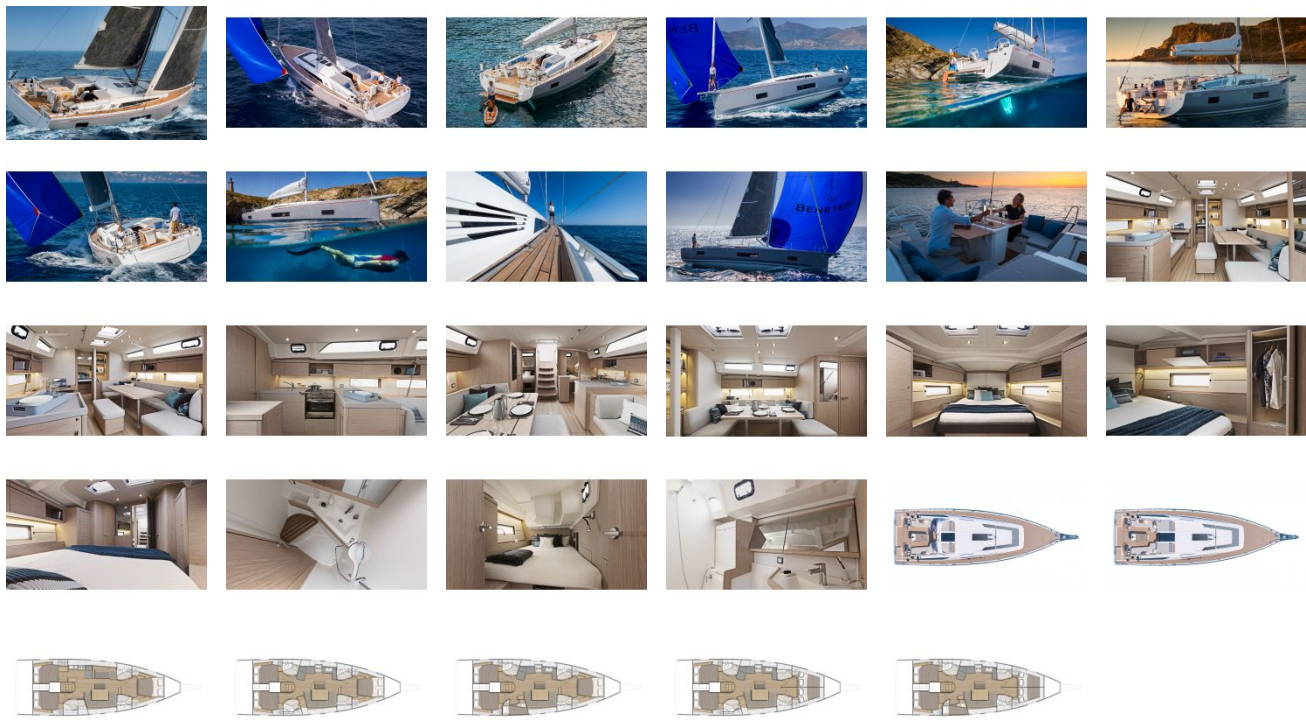
- 1 Rotomolded freshwater tank 330 L / 87 US Gal, under berth in forward cabin - 1 Deck filler
- Waterpressure system - Expansion tank - Inline filter
- 40 L / 11 US Gal Electric water heater (engine use)
- 1 Rigid black water holding tank for each WC
- Electrical shower drain pumps
- 1 Electric bilge pump

- 1 Manual bilge pump
- 1 Electric pump for the ice box drain

GAS

- 1 Box for 2 gas bottles in the cockpit (diameter: 0,28 m/ 11" x Height: 0,44 m/ 1'5")
- Regulator and solenoid

GALLERY



Annapolis Yacht Sales
7350 Edgewood Rd.
Annapolis, MD 21403
Phone: 410.267.8181