



**Viage Group**  
7981 N Tamiami Trail  
Sarasota, FL, US  
Phone: 941.444.5375

# Beneteau Antares 9

Boat Type: Cruiser



## OVERVIEW

The ultimate weekender! With an innate sense of detail and comfort, the Antares 9 is an invitation to spend more time at sea. Modern and stylish, she preserves the traditional elegance of a established range. Autonomy, habitability, panache – she has everything to make short cruising a great experience.

With her Airstep® hull, the Antares 9 cuts gently through the waves offering a comfortable ride and safe navigation. With U-shaped seats that convert to sunbathing areas, her attractive spacious cockpit (5' x 7'9") is a great place to relax with friends. With up to 2 x 200 hp power, the Antares 9 has the latest technological developments in terms of outboard engines.

Two separate cabins, one galley and a cleverly fitted shower room make the Antares 9 the ideal boat for cruises with family and friends! With wraparound windows, the pilothouse has a panoramic view and is incredibly bright. There is a real feeling of space and the lounge is cleverly organized with a co-pilot seat that swings round. This means you

can sit facing the sea or facing the chart table.

## SPECIFICATIONS

### Basic Information

Manufacturer:	Beneteau	Boat Type:	Cruiser
Model:	Antares 9	Hull Material:	
Year:	2021	Hull Type:	
Category:	Power		

### Dimensions & Weight

Length:	27.00 ft	Draft - max:	-
LOA:	27 ft - 8.23 meter	Bridge Clearance:	-
Beam:	9 ft 8 in - 2.95 meter	Dry Weight:	8144 ft
Deadrise Aft:	-		

### Tank Capacities

Fuel Tank:	79 gallons - 2 tank(s)	Holding Tank:	-
Fresh Water Tank:	42 gallons - 1 tank(s)		

### Accommodations

Total Cabins:	-	Crew Cabins:	-
Total Berths:	-	Crew Berths:	-
Total Sleeps:	-	Crew Sleeps:	-
Total Heads:	-	Crew Heads:	-
Captains Cabin:	No		

## FEATURES

### STANDARD EQUIPMENT

#### CONSTRUCTION

##### HULL

Composition:

- Sandwich (polyester resin - fiberglass - balsa core)
- White gel coat
- Winching ring on bow

##### DECK

Composition:

- Sandwich (polyester resin - fiberglass - balsa core)
- White gel coat
- Partial deck counter-mold
- Grey protection rail on the hull-deck joint
- Wheelhouse roof in white gel coat

## **DECK EQUIPMENT**

- Navigation lights = 1 all-round light on collapsible samson post
- Navigation lights (Bicolor)

## **MOORING - ANCHORING GEAR**

- Bow fitting
- Self-bailing mooring locker with hatch cover
- Eye bolt to secure mooring
- 2 Foredeck cleats in aluminium, 200 mm / 8"
- 2 Cleats amidships in aluminum, 200 mm / 8"
- 2 Aft cleats in aluminium, 200 mm / 8"

## **SAFETY ON DECK**

- Stainless steel open pulpit surrounding the cockpit up to the cockpit steps
- Asymmetric catwalks
- 2 Stainless steel handrails on wheelhouse uprights
- 2 Stainless steel handrails on wheelhouse hood
- 2 Stainless steel handrails on cockpit coamings
- 1 Stainless steel hand rail on the cockpit bench seat

COCKPIT Length: 1,27 m / 4'2" x Beam: 2,36 m / 7'9"

- Self-bailing cockpit
- Sliding aft bench seat, 4 place (Upholstery Silvertex Sterling included in packs Nordic and Comfort)
- Additional cockpit fittings (see optional extras)
- Lockers in cockpit bottom:

- 1 Large central lockable chest with gas piston assisted opening

- 2 Optional lockers in bench seats (optional)

- 2 Rod holders
- Lighting from 1 ceiling light
- Rotomolded fuel tanks (2 x 200 L / 2 x 53 US Gal) at the bottom of the cockpit compartment, in waterproof and ventilated compartment
- 2 Fuel filler caps on the port and starboard side decks
- Starboard swim access
- Security door
- Telescopic swim ladder
- Cockpit shower

## **INTERIOR**

- Interior upholstery: Dove Matador
- Woodwork Alpi Walnut
- Brown oak laminated floors - Part in polyester

#### WHEELHOUSE

Headroom: 1,93 m / 6'4"

- Wheelhouse with one-piece translucent glass windscreen
- Side windows in grey-tinted (translucent glass)
- Opening starboard side windows
- Port side sliding side window
- 3 leaf aft window door in translucent PMMA
- Black anodized aluminium frame and lock
- 2 Electric windscreen wipers + Windscreen washer
- Lighting from 4 ceiling lights

#### STEERING STATION (TO STARBOARD)

- Pilot console with space for electronics
- Steering compass
- Rev counter
- Fuel and engine gauge indicator
- 12 V Power outlet
- Luxe steering wheel
- Engine control console (Engine controls and counters supplied with prerigging)
- Bolster function adjustable pilot seat, PVC Silvertex Sterling upholstery
- Pilot footrests
- Lighting from 1 ceiling light
- Hydraulic steering

#### GALLEY (TO STARBOARD)

- Laminated kitchen countertop
- Glass flap to protect the work surface
- Stainless steel sink
- Cold water mixer tap under pressure (optional extra: Water heater - 25 L)
- Fixed 2 hob cooker
- 60 L refrigerator (Nordic/Comfort Trim package)
- Storage drawer

- Storage cupboard with waste bin / bottle holder

#### SALON

Headroom: 1,63 m / 5'4"

- Inward-facing salon convertible into a bed (optional) (Length: 2,10 m / 6'11" x Beam: 0,96 m / 3'2")
- Copilot seat with swivelling seat back (navigation / salon positions)
- Table Alpi Walnut
- Storage lockers under side seating

- Lighting from 1 ceiling light
- Battery master switch under the aft seat

## HEAD

Headroom: 1,85 m / 6'1"

- Marine toilet
- Sink
- Shower
- Storage cupboard
- Ventilation from 1 opening hull porthole
- Lighting from 1 ceiling light

## FORWARD CABIN

Headroom: 1,79 m / 5'10" (under berth: 0,93 m / 3'2")

- Double berth:
  - Length (max): 1,94 m / 6'4"
  - Beam (max): 2 m / 6'7"
- Storage lockers
- Lighting from 2 ceiling lights + 2 Reading lights
- Opening deck hatch, in the cabin
- Cupboard with hanging locker and storage space

## AFT CABIN

Headroom: 1,78 m / 5'10" (under berth: 0,74 m / 2'5")

- Double bed (1,92 m x 1,40 m / 6'4" x 4'7")
- Opening port on wheelhouse
- Storage lockers
- Lighting from 2 ceiling lights

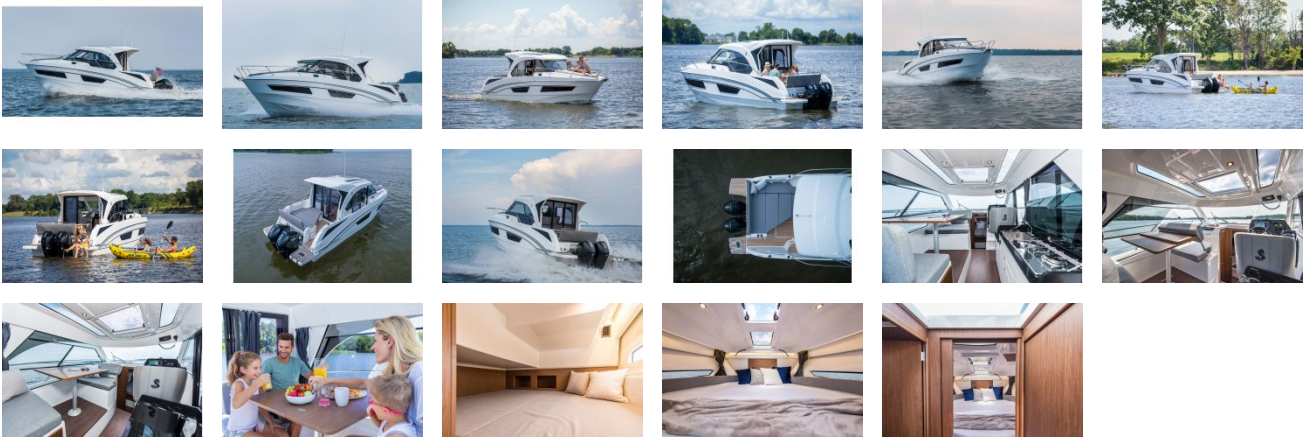
## ELECTRICITY

- 12 V Electrical panel
- 12 V Power outlet
- 2 Bilge pumps: 1 manual - 1 Electric pump
- Battery switch located in compartment under the aft salon seat
- Installation for engine battery delivered with the pre-rigging (battery not delivered)

## PLUMBING

- 160 L / 42 US Gal Rigid water tank
- Water pump for pressure building

GALLERY



**Viage Group**  
7981 N Tamiami Trail  
Sarasota, FL, US  
Phone: 941.444.5375