



Viage Group
7981 N Tamiami Trail
Sarasota, FL, US
Phone: 941.444.5375

Beneteau Antares 8

Boat Type: Cruiser



OVERVIEW

Agile, powerful and very habitable, the Antares 8 oozes character. The ideal boat for exploring new shores, she is wonderful for taking a break for a few days, confident that you are completely safe.

The Antares 8 has a new flared-out hull that delivers wonderful driving sensations, while boasting excellent seakeeping. The dynamic V design of the cap clearly announces the boat's stunning aesthetic design. Its clever deck plan offers three different possible cockpit seat layouts.

Unique on a boat this size, the Antares 8's habitability sets it apart from other motor cruisers in this category. The wheelhouse is accessed by a large sliding glass door, sheltering a well-equipped modular living space. There is a real double cabin below the wheelhouse at the bow of the boat, with storage and a shower en suite, so you can stay on board for a few days. With walnut stained woodwork, the boat offers a very contemporary atmosphere.

SPECIFICATIONS

Basic Information

Manufacturer:	Beneteau	Boat Type:	Cruiser
Model:	Antares 8	Hull Material:	
Year:	2021	Hull Type:	
Category:	Power		

Dimensions & Weight

Length:	23.00 ft	Draft - max:	-
LOA:	27 ft - 8.23 meter	Bridge Clearance:	-
Beam:	9 ft 1 in - 2.77 meter	Dry Weight:	4776 ft
Deadrise Aft:	-		

Tank Capacities

Fuel Tank:	74 gallons - 1 tank(s)	Holding Tank:	-
Fresh Water Tank:	26 gallons - 1 tank(s)		

Accommodations

Total Cabins:	-	Crew Cabins:	-
Total Berths:	-	Crew Berths:	-
Total Sleeps:	-	Crew Sleeps:	-
Total Heads:	-	Crew Heads:	-
Captains Cabin:	No		

FEATURES

STANDARD EQUIPMENT

CONSTRUCTION

HULL

Composition:

- Sandwich (polyester resin - fiberglass - balsa core)
- White gel coat
- Winching ring on bow
- Injection molded hull

DECK

Composition:

- Sandwich (polyester resin - fiberglass - balsa core)
- White gel coat
- Partial deck counter-mold

- Grey protection rail on the hull-deck joint
- Wheelhouse roof in white gel coat

DECK EQUIPMENT

- Navigation lights = 1 all-round light on collapsible samson post
- Bi-color navigation light

MOORING - ANCHORING GEAR

- Bow fitting
- Self-bailing mooring locker with hatch cover
- Eye bolt to secure mooring
- 2 Foredeck cleats in aluminium, 200 mm / 8"
- 2 Cleats amidships in aluminum, 200 mm / 8"
- 2 Aft cleats in aluminium, 200 mm / 8"

SAFETY ON DECK

- Stainless steel open pulpit surrounding the cockpit up to the cockpit steps
- Asymmetric catwalks
- 2 Stainless steel handrails on wheelhouse uprights
- 2 Stainless steel handrails on wheelhouse hood
- 2 Stainless steel handrails on cockpit coamings
- 1 Stainless steel hand rail on the cockpit bench seat

COCKPIT

- Self-bailing cockpit
- Sliding aft bench seat, 3 place
- Additional cockpit fittings (see optional extras)
- Lockers in cockpit bottom:
 - 1 Large central lockable chest with gas piston assisted opening
 - 2 Optional lockers in bench seats (optional)
- 2 Rod holders
- Lighting from 1 ceiling light
- (280 L / 74 US Gal) hermetic and ventilated rotomolded fuel tank, in the back of cockpit locker
- Fuel fill on stern deck
- Starboard swim access
- Security door
- Telescopic swim ladder

INTERIOR

- Interior upholstery: Dove Matador
- Woodwork Alpi Walnut
- Brown oak laminated floors - Part in polyester

WHEELHOUSE

Headroom: 2,05 m / 6'9"

- Wheelhouse with one-piece translucent glass windscreen
- Side windows in grey-tinted (translucent glass)
- Opening starboard side windows
- Port side sliding side window
- 2 leaf aft window door in translucent PMMA
- Electro-polished aluminium frame with lock
- 1 Electric windscreen wipers

STEERING STATION (TO STARBOARD)

- Pilot console with space for electronics
- Steering compass
- Rev counter
- Fuel and engine gauge indicator
- 12 V Power outlet
- Luxe steering wheel
- Encased side engine control (Engine controls and counters supplied with pre-rigging)
- Adjustable, swivelling Bolster function driver's seat, PVC Silvertex Sterling upholstery
- Pilot footrests
- Lighting from 1 ceiling light
- Hydraulic steering

GALLEY (TO STARBOARD)

- Kitchen with polyester sink, tap on hose for inside/outside use
- Pressured cold water
- options:
 - Compartment for refrigerator (42 L)
 - space for cooker (Gas)

SALON

Headroom: 2,02 m / 6'8"

- Inward-facing salon convertible into a bed (optional) (Length = 2 m / 6'7" - Beam = 0,92 m / 3')
- Copilot seat with swivelling seat back (navigation / salon positions)
- Table Alpi Walnut
- Storage lockers under side seating
- Lighting from 1 ceiling light
- Battery master switch under the aft seat

HEAD

Headroom: 1,38 m / 4'6"

- Closed cabinet under steering station for storage space or toilet (optional extra: Marine toilet with sewage tank / Shower)

- Door
- Lighting from 1 ceiling light

FORWARD CABIN

Headroom: 1,10 m / 3'7"

- Double berth (Length max = 2 m / 6'7" - Beam max = 1,65 m / 5'5")
- Storage lockers
- Lighting from 1 ceiling light
- Opening deck hatch, in the cabin

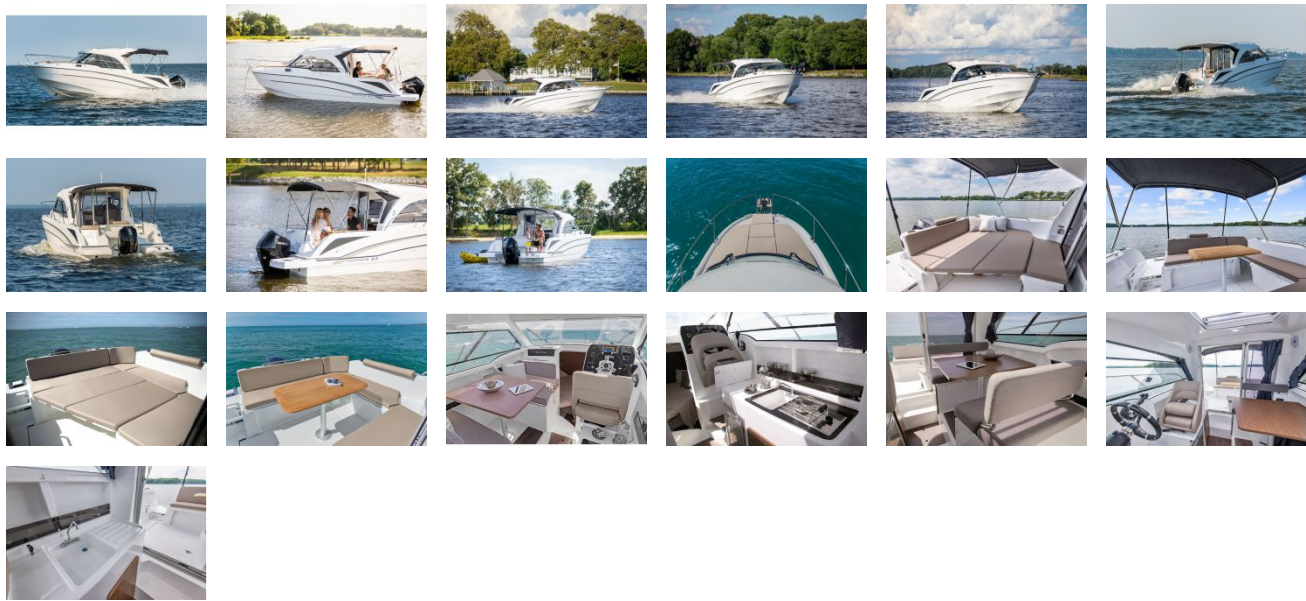
ELECTRICITY

- 6 function 12 V electrical panel
- 12 V Power outlet
- 2 Bilge pumps: 1 manual - 1 Electric pump
- Battery switch located in compartment under the aft salon seat
- Navigation lights = 1 all-round light on collapsible samson post - Bi-color navigation light
- Lighting from 4 ceiling lights
- Installation for engine battery delivered with the pre-rigging (battery not delivered)

PLUMBING

- 100 L / 26 US Gal Rigid water tank
- Water pump for pressure building

GALLERY



Viage Group
7981 N Tamiami Trail
Sarasota, FL, US
Phone: 941.444.5375