



Yachting Solutions
229 Commercial Street
Rockport, ME, US
Phone: (207) 236-8100

Starcraft Marine MX 23 C DC

Boat Type: Pontoon Boat



OVERVIEW

Cruise into Style

The all-new MX Series takes contemporary pontoon boat styling to the next level, with black anodized rails and 12 amazing layouts, including dual rear loungers and bar units. Optional HMX Performance Strakes pump up the excitement, and two great packages add the finishing touches.

SPECIFICATIONS

Basic Information

Manufacturer:	Starcraft Marine	Boat Type:	Pontoon Boat
Model:	MX 23 C DC	Hull Material:	
Year:	2019	Hull Type:	
Category:	Power		

Dimensions & Weight

Length:	23.00 ft	Draft - max:	-
LOA:	24 ft 10 in - 7.57 meter	Bridge Clearance:	-
Beam:	8 ft 6 in - 2.59 meter	Dry Weight:	2425 ft
Deadrise Aft:	-		

Tank Capacities

Fuel Tank:	30 gallons - 1 tank(s)	Holding Tank:	-
Fresh Water Tank:	-		

Accommodations

Total Cabins:	-	Crew Cabins:	-
Total Berths:	-	Crew Berths:	-
Total Sleeps:	-	Crew Sleeps:	-
Total Heads:	-	Crew Heads:	-
Captains Cabin:	No		

FEATURES

Standard Features

ELECTRICAL

Docking Lights
Courtesy Lights

DECK AMENITIES

Boarding Ladder
Rotocast Furniture Bases w/ Integrated Drains
Helm Seat w/ Slider
Bow Chaise Lounge(s)
Bow Couches
Sea Weave Aft Deck

FUEL/STEERING

Built-in Fuel Tank
Tilt Steering
Steering Wheel

MISCELLANEOUS

Changing Room
Custom Molded Dash
Deck Cleats (4)
Windscreen
Removable Cupholders

HULL CONSTRUCTION

25" Diameter Aluminum Pontoon Tubes
Marine Grade ¾" Plywood decking
All Welded Aluminum Transom
Marine Grade UV Stable Carpet
Lifetime Limited Floor/Deck/Tubes/Transom Warranty
Full Heavy Hat Understructure
Extended Rear Deck

CANVAS

Color Coordinated Bimini Top w/ Storage Boot
Bimini Top w/ Trailing Legs

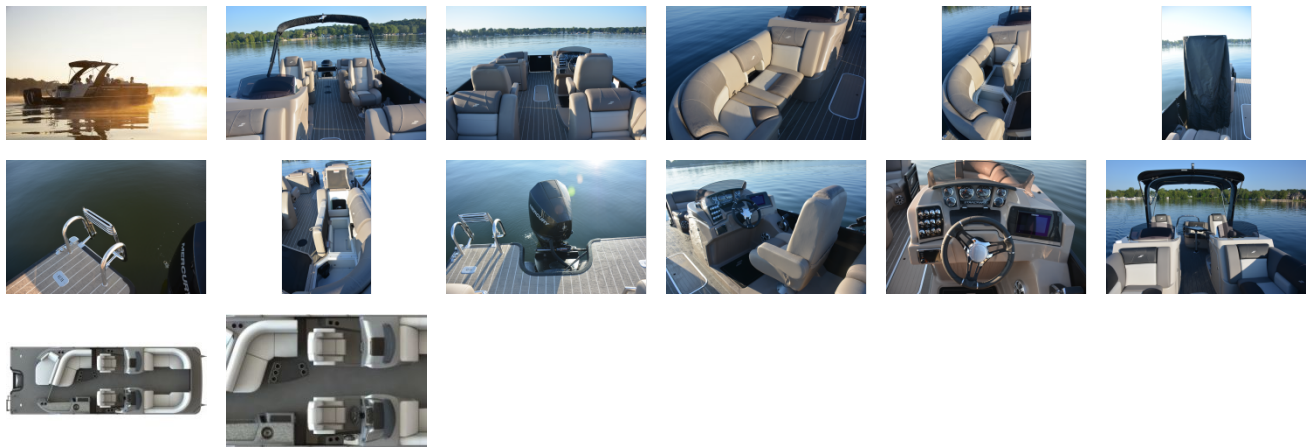
DASH/CONSOLE

Speedometer
Voltmeter
Trim Gauge
Fuel Gauge
AM/FM Stereo with Bluetooth
Auxiliary MP3 Port
Power Point with Breaker

FLOOR/CARPET

22oz Carpet

GALLERY



Yachting Solutions
229 Commercial Street
Rockport, ME, US
Phone: (207) 236-8100