



Yachting Solutions
229 Commercial Street
Rockport, ME, US
Phone: (207) 236-8100

Vanquish 24 Center Console

Boat Type: Center Console



OVERVIEW

24 CENTER CONSOLE

The voluminous interior of the 24C can seat up to 10 adults. The U-shaped forward seating is sheltered by a dodger and not only creates a wonderful place for entertaining but hides a treasure trove of storage areas. When paired with full bow storage and the convenient ski locker, there is more than ample room for the day's provisions and gear. An extra tall acrylic windshield protects the captain. The convertible leaning post backrest is removable and stows below the seat for fishing or to create a more open feel. Add a DC cooler to keep drinks and perishables cold indefinitely. For the fisherman, additional rod holders and an easily accessible bait well are also available. Standard interior is either rugged marine grade vinyl or a wide choice of Sunbrella® colors and patterns.

SPECIFICATIONS

Basic Information

Manufacturer:	Vanquish	Boat Type:	Center Console
Model:	24 Center Console	Hull Material:	Fiberglass
Year:	2019	Hull Type:	
Category:	Power		

Dimensions & Weight

Length:	24.00 ft	Draft - max:	1 ft 7 in - 0.48 meter
LOA:	25 ft 8 in - 7.82 meter	Bridge Clearance:	-
Beam:	8 ft - 2.44 meter	Dry Weight:	4200 ft
Deadrise Aft:	16.00 °		

Tank Capacities

Fuel Tank:	66 gallons - 1 tank(s)	Holding Tank:	-
Fresh Water Tank:	-		

Accommodations

Total Cabins:	-	Crew Cabins:	-
Total Berths:	-	Crew Berths:	-
Total Sleeps:	-	Crew Sleeps:	-
Total Heads:	-	Crew Heads:	-
Captains Cabin:	No		

FEATURES

STANDARD EQUIPMENT

CONSTRUCTION

- Vinyl ester epoxy resin hull laminate
- Fully closed cell foam core vacuum bagged to hull and deck
- Wood free, rot free design
- One-piece carbon fiber reinforced hull and deck liner
- Through-bolted hull and deck joint
- Silicone bronze through-hulls below water line
- Stainless steel through-hulls above water line
- Dripless propeller shaft seal
- Heavy-duty Aluminum fuel tanks (2)
- Shaft and propeller pocket for better acceleration and shallow draft (inboard models)

HULL AND DECK

- Self-bailing cockpit
- Molded two-tone non-skid decking
- Stainless steel bow rail (RA and CC)
- Anchor locker
- Gasket sealed in-floor storage locker
- Under-seat storage lockers
- Acrylic Wind Screen
- Ample bow storage
- Molded toe-kick

- Molded rub strake
- Stainless steel rub rail
- Swim platform
- Swim ladder (retractable 3 step)
- 8" stainless steel cleats (6)
- American Flag with teak staff
- Vanquish Burgee with teak staff

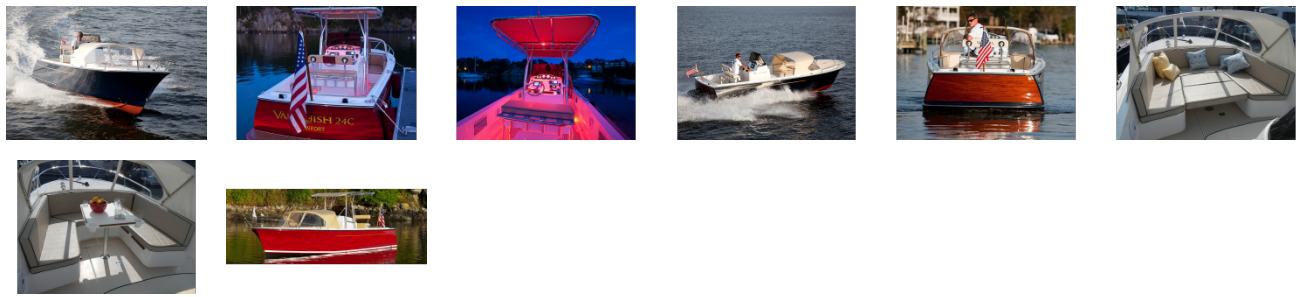
MECHANICAL AND ELECTRICAL

- Start and house battery
- Battery switch
- Fuel selector valve (port, starboard, both, off)
- Blower
- Custom waterproof distribution panel
- Hydraulic steering system
- Edson steering wheel
- Bilge pump with automatic float switch
- Navigation lights
- LED courtesy lights (6)
- Engine sea strainer
- ABYC color coded, tinned wiring
- Trumpet-style horn
- 12-Volt outlet
- USB Charging Port
- GPS Speedometer
- Tachometer
- Battery Volt Meter
- Fuel Gauge
- Compass
- Hour Meter
- Oil Pressure Gauge
- Temperature Gauge

INTERIOR

- U-Shaped Bow Seating
- Nautolex marine grade vinyl or Sunbrella upholstery
- Recessed drink holders (6) – stainless steel
- Leaning Post with removable backrest
- Stainless Steel grab handles (4)

GALLERY



Yachting Solutions
229 Commercial Street
Rockport, ME, US
Phone: (207) 236-8100