



**Yachting Solutions**  
229 Commercial Street  
Rockport, ME, US  
Phone: (207) 236-8100

# Vanquish 26 Dual Console

Boat Type: Dual Console



## OVERVIEW

## 26 DUAL CONSOLE

We have taken Doug Zurn's exclusive bow forward design to the next level, creating even more room for movement in the cockpit area and fostering an uncluttered feeling. The cozy and inviting bow seating provides everything you need at your fingertips to enjoy a day on the water. A large L-shape settee aft provides plenty of seating so no one is left behind. The integrated wet bar with your choice of sink or barbeque grill and the enclosed head under the port console ensures that the fun goes on all day. All these features built to our unwavering standard of construction slice through the waves on the famed Vanquish hull. This is a boat that is truly in a class of her own.

## SPECIFICATIONS

### Basic Information

Manufacturer:	Vanquish	Boat Type:	Dual Console
Model:	26 Dual Console	Hull Material:	Fiberglass
Year:	2019	Hull Type:	
Category:	Power		

Dimensions & Weight

Length:	26.00 ft	Draft - max:	2 ft 6 in - 0.76 meter
LOA:	26 ft 8 in - 8.13 meter	Bridge Clearance:	-
Beam:	8 ft - 2.44 meter	Dry Weight:	4500 ft
Deadrise Aft:	16.00 °		

Tank Capacities

Fuel Tank:	89 gallons - 1 tank(s)	Holding Tank:	-
Fresh Water Tank:	-		

Accommodations

Total Cabins:	-	Crew Cabins:	-
Total Berths:	-	Crew Berths:	-
Total Sleeps:	-	Crew Sleeps:	-
Total Heads:	-	Crew Heads:	-
Captains Cabin:	No		

FEATURES

STANDARD EQUIPMENT

CONSTRUCTION

- Vinyl ester epoxy resin hull laminate
- Fully closed cell foam core vacuum bagged to hull and deck
- Wood free, rot free design
- One-piece carbon fiber reinforced hull and deck liner
- Through-bolted hull and deck joint
- Silicone bronze through-hulls below water line
- Stainless steel through-hulls above water line
- Integrated Engine Bracket and Swim Platform
- Heavy-duty Aluminum fuel tank
- Carbon fiber stringer grid system

HULL AND DECK

- Self-bailing cockpit
- Molded two-tone non-skid decking
- Anchor locker
- Gasket sealed in-floor storage locker (2)
- Removable under-seat storage lockers (5)
- Stainless steel windshield header
- Molded toe-kick
- Molded rub strake
- Stainless steel rub rail

- Swim ladder (retractable 3 step)
- 8" retractable stainless steel cleats (6)
- American Flag with teak staff
- Walk-Thru transom door
- Bi fold wind door

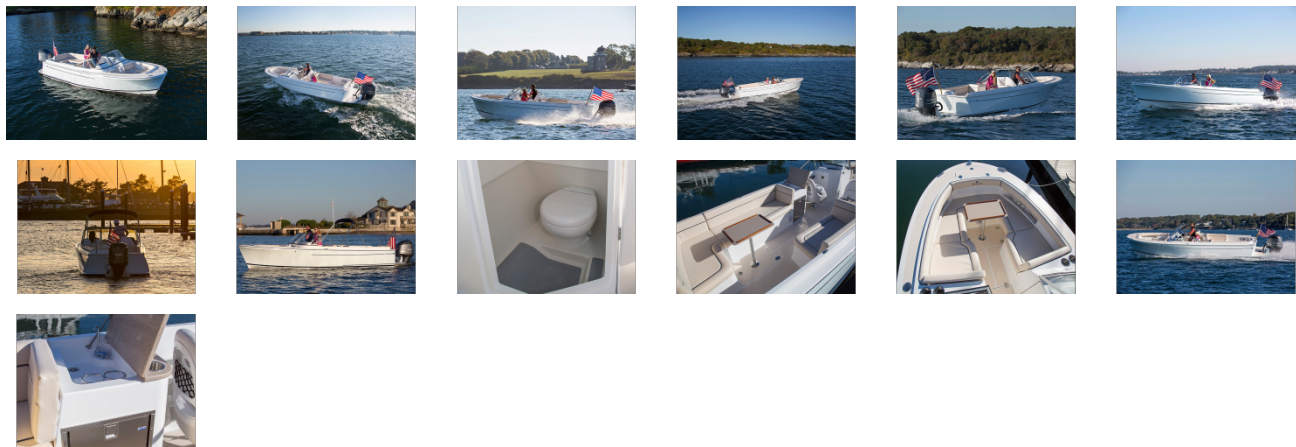
## **MECHANICAL AND ELECTRICAL**

- Mercury Smart Craft or Yamaha Command Link
- Digital Throttle and Shift
- Start and house battery
- Battery switch
- Custom waterproof distribution panel
- Hydraulic steering system
- Edson steering wheel
- Bilge pump with automatic float switch
- Navigation lights
- LED courtesy lights (6)
- ABYC color coded, tinned wiring
- 12-Volt outlet (2)
- USB Charging Port
- Porcelain fresh water head w/holding tank
- Electric horn

## **INTERIOR**

- Bow Seating with removable port and starboard filler cushions
- Wet Bar with fresh water sink
- Nautolex marine grade vinyl or Sunbrella upholstery
- Recessed drink holders (13)– stainless steel
- Drink holders Ring stile (6)
- Flip-up bolster captain and co-captain seats
- Stainless Steel grab handles (7)
- Lockable storage box

GALLERY



**Yachting Solutions**  
229 Commercial Street  
Rockport, ME, US  
Phone: (207) 236-8100