



**Jefferson Beach Yacht Sales**  
24400 Jefferson Avenue,  
St. Clair Shores, MI 48080  
Phone: 866-490-5297

# Viking 38BF

Boat Type: Sport Fishing



## OVERVIEW

The Viking Yacht Company is proud to announce the addition of three new boats to its industry-leading sportfishing fleet: the 38 Billfish, 38 Open and 46 Billfish.

The 38 Billfish and 38 Open were designed and built with the same DNA as their predecessor, the 37 Billfish. As owner/operator vessels, they offer simplicity and ease of maintenance, serving as ready-to-go fishing machines equipped for inshore and offshore missions as well as versatile cruising boats with reliable inboard diesel power.

"The 37 Billfish was an instant success and has done so well we decided to make a commitment toward taking the Billfish concept to the next level," says John Leek IV, General Manager of Viking Mullica where the Billfish series is being manufactured. "These are purpose-built Vikings geared toward day boating but with very comfortable overnighting and living accommodations."

Soon to join the 38 Billfish and 38 Open is the 46 Billfish, another exciting new model with sharp styling, exciting performance and legendary Viking quality. During the 37 Billfish's 2-year run of success, demand grew for this style of a Viking in a larger size. "The 46 was a natural progression for the Billfish," says John. "Our customers really

grasped onto the philosophy behind these boats."

## SPECIFICATIONS

### Basic Information

Manufacturer:	Viking	Boat Type:	Sport Fishing
Model:	38BF	Hull Material:	Fiberglass
Hull Type:	Deep Vee	Category:	Power

### Dimensions & Weight

Length:	39.00 ft	Draft - max:	3 ft 4 in - 1.01 meter
LOA:	38 ft 8 in - 11.79 meter	Bridge Clearance:	-
Beam:	14 ft - 4.27 meter	Dry Weight:	-
Deadrise Aft:	-		

### Tank Capacities

Fuel Tank:	460 gallons - 1 tank(s)	Holding Tank:	-
Fresh Water Tank:	69 gallons - 1 tank(s)		

### Accommodations

Total Cabins:	1	Crew Cabins:	-
Total Berths:	-	Crew Berths:	-
Total Sleeps:	-	Crew Sleeps:	-
Total Heads:	1	Crew Heads:	-
Captains Cabin:	No		

## FEATURES

The 38 Billfish and 38 Open share the same hull, cockpit and have a similar mechanical arrangement but differ in command deck and bridge configurations. Their 109-square-foot cockpits are equipped with a laminated mounting plate in the deck for fighting chair, rocket launcher or table installations. Other features include in-deck insulated fish boxes port and starboard, a walk-through transom door and lift gate, a bait freezer with upper tray, a transom fish box and live well, rod holders, tackle storage and fresh and raw-water wash downs. Both boats feature two-person seats flanking the centerline walkthrough. There's refrigerated drink storage, as well as ample general storage throughout.

The 38 Billfish's command deck holds a salon-like living area that includes a port-side U-shaped dinette and a fiberglass hi-lo table. A comfortable lounge to starboard also serves as rod storage. You have the option of equipping your 38 Billfish with a second lower helm station on the starboard side.

The 38 Open's command deck also has ample seating, with port and starboard L-shaped lounges and storage below. A raised centerline command station gives the driver excellent sightlines and is equipped with a fiberglass helm pod, power-assist hydraulic steering with stainless steel wheel and Palm Beach style controls. Viking's Palm Beach Towers can outfit the 38 Open with a custom tuna tower with a second helm and a buggy top.

Like her convertible brethren, the 38 Billfish's flybridge is designed with a tournament-style center console walk-around helm. Like the 38 Open, the 38 Billfish has Palm Beach style controls and power-assist hydraulic steering. Seating includes a single Release Marine teak chair (a second helm chair is optional) and lounges to port and starboard and a forward console seat. A three-sided Costa Clear enclosure provides weather protection. For both the 38 Billfish and 38 Open, our subsidiary Atlantic Marine Electronics can build and install an A-to-Z package of navigation and communication equipment to deliver the boat turnkey ready.

#### Day & Night Livability

For accommodations below, each boat has a unique and functional configuration. The 38 Billfish dedicates much of its space for overnight livability, with a forward stateroom, an L-shaped galley and a head with enclosed shower. The 38 Open has a layout geared more toward day boating, featuring a starboard-side sofa with storage. The galley and head with enclosed shower are positioned on the port side. Both galleys are appointed with Corian countertops, two-burner electric stoves, microwave/convection ovens, cabinet storage and under-counter drawer-style refrigeration with built-in ice makers.

The 38 Billfish is offered with island queen or crossover berth arrangements and is equipped with two hanging lockers, while the 38 Open has a lower double bunk and an upper single with a starboard-side hanging locker.

#### Efficient and Durable

As Viking continues to develop the Billfish series, our building methods and materials have gained efficiency, which adds even more value to these boats. A modified vinylester resin is used in the entire hull skin. End-grain balsa and closed-cell foam are used as coring materials in selected areas for optimized strength and stiffness while minimizing weight. The single integral fiberglass fuel tank, sealed to the hull with resin foam, is resin infused with balsa coring on all sides for stiffness. The hull-to-deck joint is mechanically fastened every three inches and fiberglassed inside.

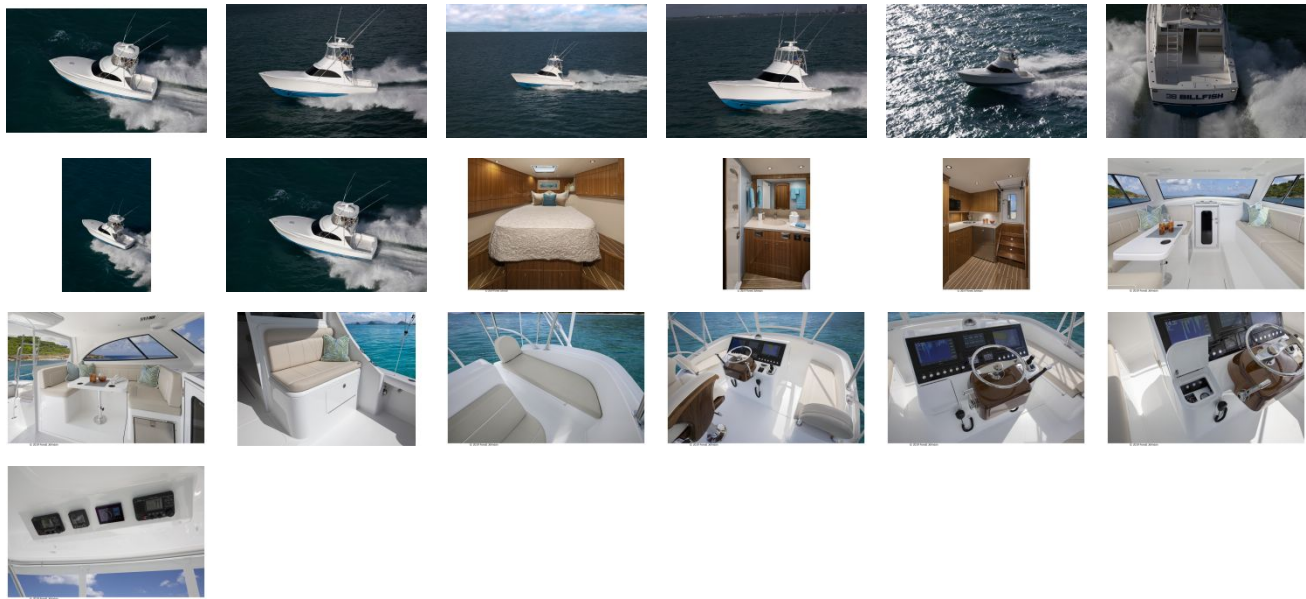
#### Viking Engineering

For ease of maintenance, each engine and other critical machinery is located beneath electrically-actuated hatches in the command deck area. The Billfish is designed and built with many of the same mechanical systems, components and technologies found on larger Vikings. Examples include the Delta-T engineroom ventilation system and a fire suppression system that's automatically or manually operated and tied into the main engine and generator ignitions.

Running gear includes Class "S" pitch tolerance propellers with dynamic balancing and bronze struts, seacocks and rudders. The engineroom, lazarette and forward bilges are painted with Snow White Awlgrip for increased visibility and ease of maintenance. A large centerline hatch exposes the house and starting batteries, the 9kW generator, and the optional Seakeeper SK 6 gyro stabilizer. Both the 38 Billfish and 38 Open are powered with twin Cummins QSB6.7 diesels with 550 MHP.

The 38 Billfish will make her debut at the Viking VIP Preview, hosted by the Viking Yacht Service Center in Riviera Beach, Florida, February 1st and 2nd. Introductions of the 46 Billfish and 38 Open are slated for later in 2019 and both will debut during the fall boat show season.

GALLERY



**Jefferson Beach Yacht Sales**  
24400 Jefferson Avenue,  
St. Clair Shores, MI 48080  
Phone: 866-490-5297