



South Jersey Yacht Sales
900 Ocean Drive
Cape May, NJ 08204
Phone: 609-884-1600

Viking 44SC

Boat Type: Convertible Boat



OVERVIEW

Creating a model within a model has been a successful path for Viking as demonstrated by the Viking 44 Convertible and 44 Open, which share the same hull with uniquely different deck and interior arrangements. The popularity of these new models has encouraged us to expand this theme with a pair of new 44s with striking profiles and special features that showcase Viking's ability to broaden the appeal of this versatile hull.

Using our \$1million five-axis profiler, we designed and built a plug and a female mold to create a rakish fiberglass deckhouse module, fully open to the cockpit while incorporating stylish convertible window lines and a roof overhang. Built into finely tool hardtop is a pair of easily accessed rod stowage compartments.

The Viking 44 Sport Coupe has a distinctive New England or Great Lakes flavor for cruising efficacy and includes a choice of a custom fiberglass mast for the radar and other antennas, or a customized radar arch. The 44 Sport Tower will be a sharp looking rig with its fitted Palm Beach Towers' tuna tower. Add a pair of outriggers and this boat is an ideal ride for the sailfish circuit, cobia hunting and cruising throughout the Bahamas.

SPECIFICATIONS

Basic Information

Manufacturer:	Viking	Boat Type:	Convertible Boat
Model:	44SC	Hull Material:	Fiberglass
Year:	2020	Hull Type:	
Category:	Power		

Dimensions & Weight

Length:	44.00 ft	Draft - max:	4 ft 5 in - 1.35 meter
LOA:	45 ft 1 in - 13.74 meter	Bridge Clearance:	-
Beam:	16 ft 4 in - 4.98 meter	Dry Weight:	-
Deadrise Aft:	-		

Tank Capacities

Fuel Tank:	-	Holding Tank:	-
Fresh Water Tank:	-		

Accommodations

Total Cabins:	-	Crew Cabins:	-
Total Berths:	-	Crew Berths:	-
Total Sleeps:	-	Crew Sleeps:	-
Total Heads:	-	Crew Heads:	-
Captains Cabin:	No		

FEATURES

In their 119-square-foot cockpits, both the 44 SC and 44 ST sport the familiar starboard mezzanine seating arrangement of the popular 44 Open. Engine room access is provided with a convenient centerline hatch that's integral with the mezzanine seating. The SC and ST have been engineered for the installation of a Seakeeper gyro stabilizer, which brings great stability to the vessel to increase overall comfort.

The command deck includes our signature and tournament-proven centerline forward helm station on a raised platform for enhanced visibility. The console holds a bank of electronics displays, and has space for engine instrumentation and other accessories. Recessed compartments accommodate radios and additional equipment, plus accessory switches and controls.

Like all Vikings, the 44 SC and ST can be appointed with custom Atlantic Marine Electronics's packages for navigation, communication and entertainment accessories, and using this Viking subsidiary allows the yacht to be delivered turnkey ready.

A sliding companionway door and a large set of stairs with a starboard-side vertical handrail lead to the climate-controlled salon. With its 16 ft. 4 in. beam, the widest of any boat in this class, the salon is a spacious social area for relaxing and entertaining. The starboard-side galley, which sits opposite an L-shaped lounge with a dinette table, includes teak cabinetry with meticulous joinery and fit and finish, expansive Corian countertops, an electric range,

separate under-counter refrigerator and freezer units and a microwave/convection oven. Other notable amenities include a stereo system with a 24-inch flat screen HD TV.

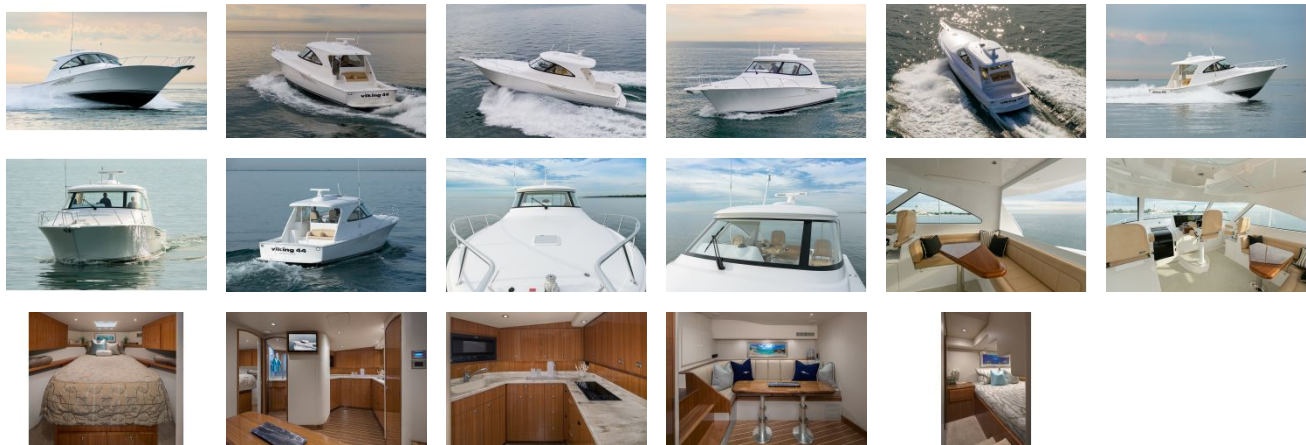
In the forward master stateroom, the island queen bed with mattress has a lift-up top with gas pistons and maple-lined storage underneath. There's also a maple-lined hanging locker. Air conditioning, a 19-inch flat screen television and access to the head and shower round out the standard amenities.

The head has custom Amtico flooring, a one-piece molded Corian countertop with rounded edges and a sink with a satin nickel faucet. With its two-person berth, the aft guest stateroom can accommodate another couple and makes for a nice hideaway for the kids.

Twin MAN 800-hp diesels serve as the standard propulsion package. The engineroom, lazarette, forward bilge and anchor locker are all painted with Snow White Awlgrip for maximum visibility and easier maintenance. A Delta-T engineroom ventilation system, an oil exchange system and an Onan 13.5 kW E-QD (electronic quiet diesel) Series generator are just some of the standard mechanical and electrical equipment.

We encourage you to contact your Viking dealer to learn more about these special edition models and availability.

GALLERY



South Jersey Yacht Sales
900 Ocean Drive
Cape May, NJ 08204
Phone: 609-884-1600