



McMichael Yacht Brokers
447 East Boston Post Road
Mamaroneck, NY 10543
Phone: 877.606.0401

Fountaine Pajot Astréa 42

Boat Type: Catamaran



OVERVIEW

The Astréa 42 by Fountaine Pajot Sailing Catamarans is distinguished by its abundance of natural light, energetic lines, elegant living spaces and unparalleled comfort, while delivering sheer pleasure underway. A joy to share as a couple or with family and friends, this new catamaran promises every leg of your travels will be memorable.

The Astréa 42 demonstrates the boatyard's commitment to innovation while preserving the classic identity of the Fountaine Pajot sailing catamarans' range. She features all the elements that contributed to making our latest new boat, the Saona 47, an international success. Her inverted bow, the new signature mark of the range, gives the boat an elegant and dynamic line while offering incomparable interior space.

Enjoy the Sea to its Fullest

The Astréa 42 was conceived and designed to facilitate free-flowing movement throughout the boat, as well as linking the helm station with the outdoor relaxation and living spaces from coachroof to cockpit.

The coachroof features a double seat at the helm station and a built-in sun lounger for enjoying idyllic days together.

The spacious cockpit, equipped with an optional integrated plancha grill, is the perfect place to relax and feel at one with the sea, enhanced by the Beach Club option that provides an embedded gangway flush with her line.

The incredibly comfortable lounge has been designed with expansive panoramic windows that bathe the interior in natural light. Her U-shaped galley transitions seamlessly with the cockpit courtesy of a vast sliding pocket door.

Available in two versions – Owner and Quatuor – with 12 bathroom layout options, the Astréa 42 has everything needed to fulfil your casual or extended cruising dreams. This is a catamaran that makes you feel proud to be a member of the Fountaine Pajot family.

SPECIFICATIONS

Basic Information

Manufacturer:	Fountaine Pajot	Boat Type:	Catamaran
Model:	Astréa 42	Hull Material:	Fiberglass
Year:	2020	Hull Type:	
Category:	Sail		

Dimensions & Weight

Length:	42.00 ft	Draft - max:	4 ft 1 in - 1.24 meter
LOA:	41 ft 3 in - 12.57 meter	Bridge Clearance:	-
Beam:	23 ft 7 in - 7.19 meter	Dry Weight:	25760 ft
Deadrise Aft:	-		

Tank Capacities

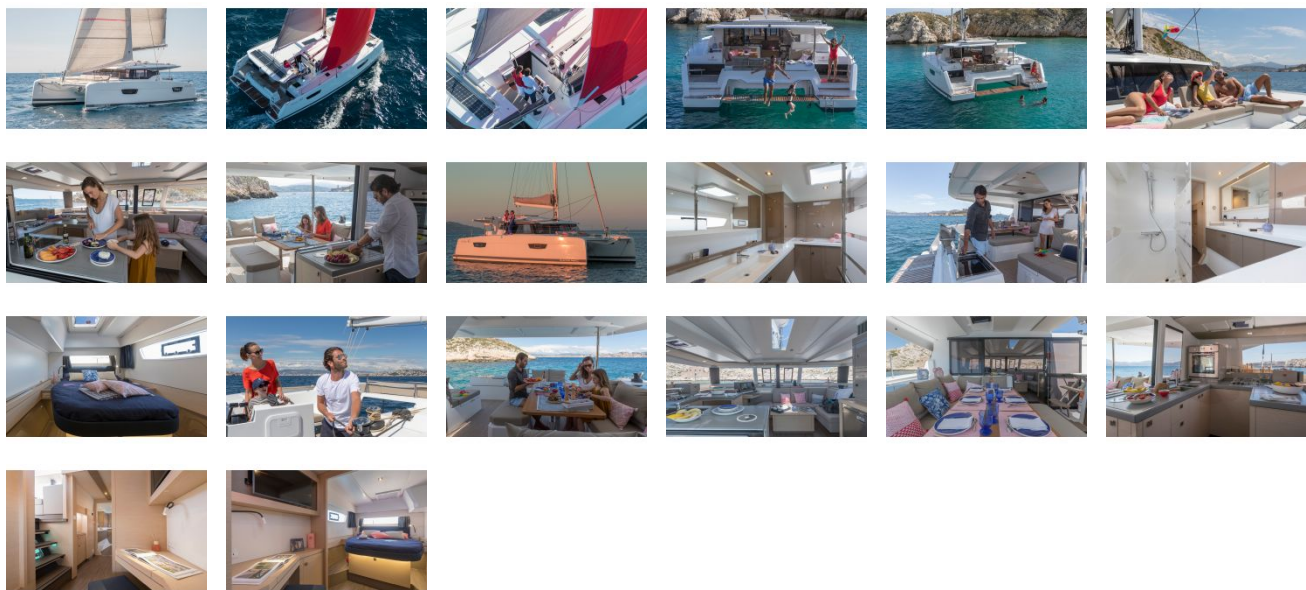
Fuel Tank:	124 gallons - 1 tank(s)	Holding Tank:	-
Fresh Water Tank:	350 gallons - 1 tank(s)		

Accommodations

Total Cabins:	-	Crew Cabins:	-
Total Berths:	-	Crew Berths:	-
Total Sleeps:	-	Crew Sleeps:	-
Total Heads:	-	Crew Heads:	-
Captains Cabin:	No		

FEATURES

GALLERY



McMichael Yacht Brokers
447 East Boston Post Road
Mamaroneck, NY 10543
Phone: 877.606.0401