

Summit 54

Boat Type: Motor Yacht



OVERVIEW

A NEW 26-KNOT CONTEMPORARY MOTORYACHT

Pick a beautiful spot and savor life aboard the Summit 54'.

A timeless design crafted with proper boarding gates, fully-walkable side decks, beautiful, wrap-around windows, and interior features that make the most of weekend escapes, SUMMIT MotorYachts brings to the dock a new perspective on lasting comfort and sophistication.

Designed to reward and recharge (R&R).

SPECIFICATIONS

Basic Information

Manufacturer:	Summit	Boat Type:	Motor Yacht
Model:	54	Hull Material:	Fiberglass
Year:	2020	Hull Type:	Planing
Category:	Power		

Dimensions & Weight

Length:	54.00 ft	Draft - max:	3 ft 4 in - 1.01 meter
LOA:	58 ft 5 in - 17.81 meter	Bridge Clearance:	-
Beam:	15 ft 10 in - 4.82 meter	Dry Weight:	-
Deadrise Aft:	-		

Tank Capacities

Fuel Tank:	700 gallons - 1 tank(s)	Holding Tank:	-
Fresh Water Tank:	210 gallons - 1 tank(s)		

Accommodations

Total Cabins:	3	Crew Cabins:	-
Total Berths:	-	Crew Berths:	-
Total Sleeps:	-	Crew Sleeps:	-
Total Heads:	2	Crew Heads:	-
Captains Cabin:	No		

FEATURES

Aft Deck Highlights

Appointed with genuine teak decking, a handcrafted teak table and designer-quality soft goods (upholstery chosen from our SUMMIT MotorYachts standard selections), the aft deck beams with pride and is a seamless extension of the interior, both in style and access.

Just down from the aft deck is a perfect-height swim platform for lounging or taking a dip. Also accessed from the aft deck, comfortable steps lead to the flybridge; another perfect place to relax.

Hear the music playing? Fusion® Entertainment Marine Audio Solutions sends ambiance and harmony to the aft deck, salon/galley lounge, bow and flybridge. Also working in harmony with the interior, is the aft deck grilling station and the sea-to-table service window that provides continuous access and contact.

Foredeck and Sun Lounge

When at-anchor, the foredeck of the Summit 54' is as much a social space as a spot for a peaceful siesta or nightly stargazing. Soak in the sights and the sun, or shelter in the shade, on the foredeck's comfortable bow seating and reclining sun pad lounge that is equipped with arm rests, cupholders and a luxurious canopy. Furthermore, the side decks are fully walkable—no sideways shuffling.

And, thanks to the thoughtful design of the forward deck with portlights and a hatch, the lower interior accommodations enjoy lots of light and the abundant fresh breezes circulating throughout the cabins.

Flybridge

Experience all-day enjoyment (coffee to cocktails) up on the flybridge. There are fresh breezes, 360-degree vistas, a forward sun lounge, and a settee with seats for everyone. Grab a cold beverage from the adjacent refrigerator, gather around the handcrafted teak table and don't miss out on the conversation or sunset.

Underway, the flybridge is as functional as it is social. The helm is slightly offset to starboard with ample room for twin helm chairs. Guests can sit next to, or in front of you, while you take them on an afternoon sightseeing tour—or to your favorite destination for an overnight experience.

Upon arrival, one person easily launches the tender using the hydraulic crane. Your adventure then continues!

Galley Lounge

The warm walnut wood tones and soothing horizontal lines of the grain. The cascading waterfall countertops. The enormous, wrap-around windows. All intentional. All subtle design choices that reflect the horizon and calm us.

To further optimize weekend escapes, we've designed the galley to suit any mood or moment. For example, a breakfast nook and settee to starboard with a handcrafted, collapsing teak table, is just the right spot to lounge while your tea steeps.

The timeless, clean look created with beautiful Silestone® countertops and Moen® sink and Grohe® faucet are complimented by the modern galley appliances, stainless steel finish, that will never feel like a compromise. Included are a refrigerator/freezer with double drawers, a convection microwave oven, a cooktop, icemaker and dishwasher.

Helm Deck

Stepping up, the helm deck continues the theme of 360-degree views providing exceptional sightlines from the dual helm seat and electronics console, as well as an expansive dining experience around the handcrafted high/low table.

The Summit 54' interior dining area is elevated to provide some space and separation from the galley, but at the same time, remain connected to all that is happening onboard. Outside of mealtime and entertaining, with a quick coffee table transformation, and still the comfort of the wrap-around seating, the area becomes a casual and comfortable TV-watching area.

The helm is made of fine walnut and leather, raised and wedge-shaped, with plenty of room for your signature suite of electronics. The wheel is a traditional, stunning teak and stainless-steel masterpiece. This area also offers a door to starboard.

Master Suite

More than a master stateroom. Enter your master suite. Located at the widest part of the boat, the suite is nearly 15 feet wide. And, for a more comfortable night's sleep, the queen berth is not tapered at the foot, nor the head, of the bed. With his-and-hers wardrobe closets, plenty of drawer storage, and an ensuite head with cabinetry, there's no need to live out of a suitcase.

We've designed each stateroom with what's desired, not just decorative. The master suite also has a TV, a vanity/desk, and beautiful LED overhead lighting and wall lighting.

All accommodations are coordinated with pillows, sheets and spreads for all beds, from the choice of the SUMMIT

MotorYachts design packages.

VIP Stateroom with Ensuite Guest Head Access

Much like the master, the VIP stateroom will have family and guests living lavishly. Living up to the VIP moniker, this space has the comforts of a walk-around queen berth, hanging locker and extra storage, overhead lighting, reading lights, TV, and ensuite access to the beautiful guest head with a stall glass shower. Everyone will be waiting for their next invitation to get away.

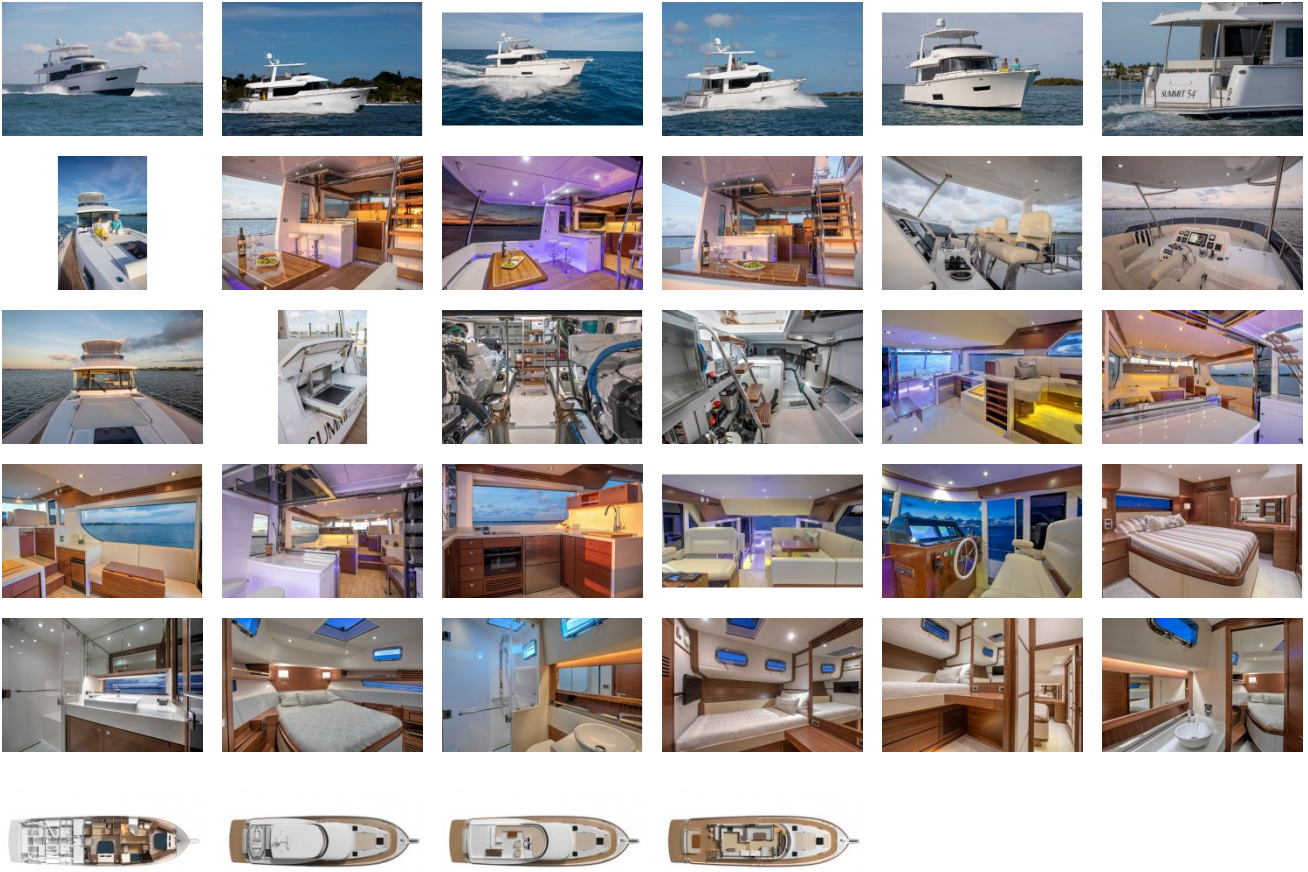
All accommodations are coordinated with pillows, sheets and spreads for all beds, from the choice of the SUMMIT MotorYachts design packages.

Guest Stateroom / Office

With a full berth, more hanging storage, and a desk with a mirror and lighting fixtures, the third cabin is really a room packed with purpose. It's also the home of the washer and dryer (not a combo unit). Alternatively, there is the option to forego the berth and dedicate the stateroom to be an office.

Welcome to your floating home.

GALLERY



Stan Miller Yachts
245 Marina Drive
Long Beach, CA, US
90803
Phone: 562-598-9433