

Valhalla Boatworks V-37

Boat Type: Center Console



OVERVIEW

The Valhalla Boatworks V Series consists of three outboard-powered deep-V monohulls from 33 to 41 feet designed to excel as hard-core fishing boats and built to the highest levels of workmanship and fit and finish.

The V-33, V-37 and V-41 are the result of the cooperative effort of the Viking Design & Engineering team and Michael Peters Yacht Design (MPYD). The V Series utilizes MPYD's patented Stepped-V Ventilated Tunnel running surface that reduces drag while increasing speed, stability and efficiency.

"It's the most advanced and proven stepped-hull design in the world," says Viking Design Manager David Wilson. "The twin steps and tunnel not only give you fast and efficient performance but also precise handling and a very stable ride."

Viking design traits can be found from stem to stern on the V Series boats. Proud bows, gently sloping S-shaped sheers, double forward chines, helm pods, raised toe rails and mezzanine seating are some of the hallmarks. Viking engineering and mechanical prowess shine through as well, with customized Seakeeper installations that do not sacrifice storage or deck space and mechanical, plumbing and electrical systems designed and built to unmatched

levels.

These exciting new boats are equally adept and equipped for coastal or offshore missions. The V Series not only boasts the latest in hull design for optimal performance, they're also equipped with cutting-edge fishing equipment and innovative deck designs for storage of rods, gear, tackle and bait. The captain will enjoy excellent visibility through frameless wraparound Costa Clear or tempered glass windshields. Liebroc or optional Release Marine individual helm and companion chairs are versatile and comfortable with flip-up bolsters and armrests.

The same resources of Viking's vertically integrated company are at the disposal of Valhalla Boatworks, so major components of each build such as hardtops, Marlin and Gap towers and electronics packages are being manufactured in-house by our experienced shipwrights to guarantee turn-key delivery for our customers.

On deck, a raised transom livewell, in-deck fish boxes, strategically located rod holders, a port dive door and an abundance of storage space are just a few of the standard features on each of these V Series boats. They also feature a forward console lounge and optional port and starboard forward seating with forward-facing backrests. The consoles of these boats will feature rod storage, a head, a sink, and access to electronics, the electrical distribution panel and other critical components.

The V-33, V-37 and V-41 are powered by four-stroke outboards with horsepower ratings from 300 to 425 in twin, triple or quad configurations depending on the model. The efficiency of the stepped hulls and these direct-fue-injected engines deliver best-in-class fuel economy and range. Power-assist hydraulic steering will be standard and joystick helm control systems will be optional for all three models.

SPECIFICATIONS

Basic Information

| | | | |
|---------------|--------------------|----------------|----------------|
| Manufacturer: | Valhalla Boatworks | Boat Type: | Center Console |
| Model: | V-37 | Hull Material: | Fiberglass |
| Year: | 2020 | Hull Type: | Deep Vee |
| Category: | Power | | |

Dimensions & Weight

| | | | |
|---------------|-------------------------|-------------------|-------------------------|
| Length: | 37.00 ft | Draft - max: | 2 ft 10 in - 0.86 meter |
| LOA: | 36 ft 9 in - 11.2 meter | Bridge Clearance: | - |
| Beam: | 10 ft - 3.05 meter | Dry Weight: | 9994 ft |
| Deadrise Aft: | 24.00 ° | | |

Tank Capacities

| | | | |
|-------------------|-------------------------|---------------|------------------------|
| Fuel Tank: | 465 gallons - 1 tank(s) | Holding Tank: | 12 gallons - 1 tank(s) |
| Fresh Water Tank: | 40 gallons - 1 tank(s) | | |

Accommodations

| | | | |
|-----------------|----|--------------|---|
| Total Cabins: | - | Crew Cabins: | - |
| Total Berths: | - | Crew Berths: | - |
| Total Sleeps: | - | Crew Sleeps: | - |
| Total Heads: | 1 | Crew Heads: | - |
| Captains Cabin: | No | | |

FEATURES

The V-37 comes with four engine package options to choose from:

- Triple Mercury Verado 400, "Cold Fusion White"
- Triple Mercury Verado V80 300, "Cold Fusion White"
- Triple Yamaha F300, "White"
- Twin Yamaha V8 425 XTO, "White"

Hits 70-plus mph at WOT with triple Mercury 400s.

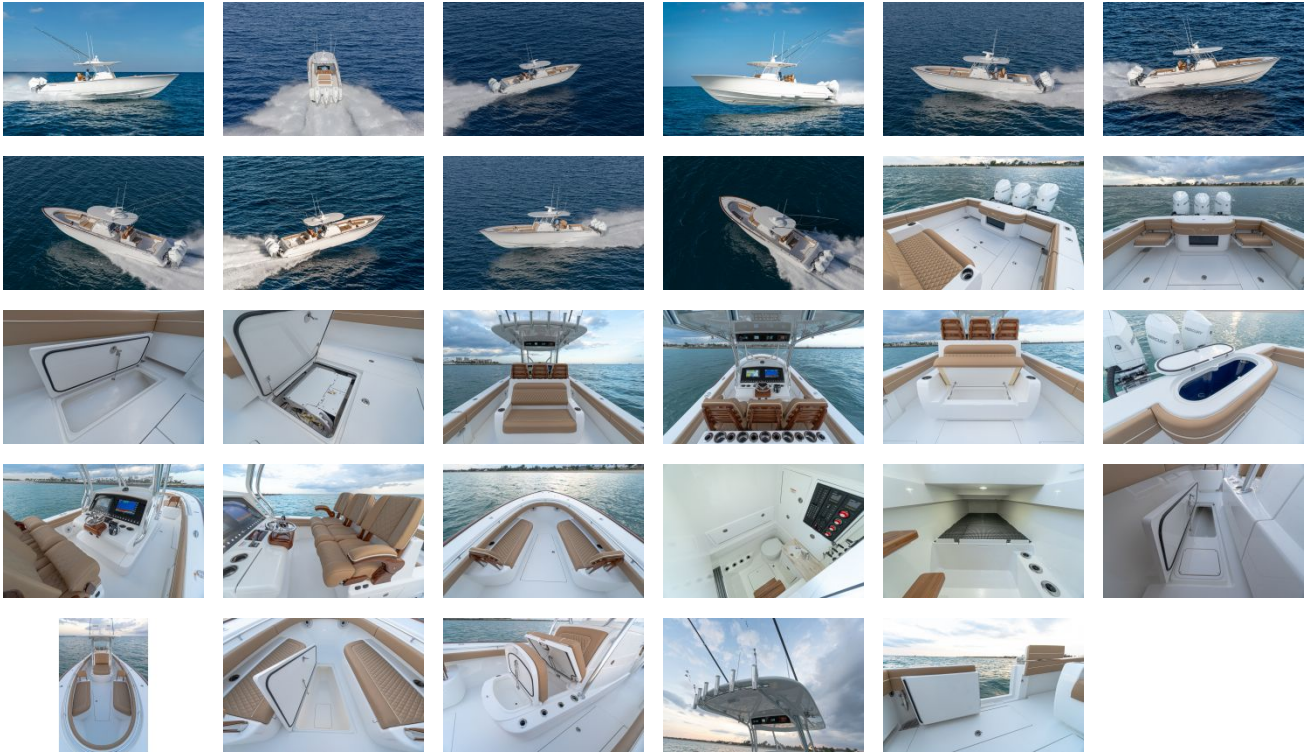
At 41 mph can travel 531 miles.

With Triple Yamaha F300s, tops out at 63 mph, and the boat gets an impressive 1 mpg at the high speed of 48 mph.

Attachment

- [Brochure](#)

GALLERY



Stan Miller Yachts
245 Marina Drive
Long Beach, CA, US
90803
Phone: 562-598-9433