



East Coast Yacht Sales
No Address entered
Phone: 555-555-5555

Sirena Yachts 64

Boat Type: Motor Yacht



OVERVIEW

Suitable for family world cruising on a serious scale, its spacious three-configuration layout features floor-to-ceiling glass windows, reams of natural light, and an interior design by Tommaso Spadolini. Pairing Italian flair with Turkish craftsmanship, it is a stunning model with huge aesthetic appeal.

The innovative hull design has also undergone rigorous testing at the renowned Wolfson Unit at the University of Southampton, including three rounds of towing tank testing. Sea Keeping tests have also been conducted on a self-propelled scale model of the hull.

The result is an innovative, low drag, canoe-shaped body capable of planing at high speed or semi-displacement cruising when in low fuel consumption mode. Equipped with gyroscopic stabilisers, it offers the ultimate in smooth cruising, not to mention optimised comfort at anchor; the perfect yacht for explorative, family adventure.

SPECIFICATIONS

Basic Information

Manufacturer:	Sirena Yachts	Boat Type:	Motor Yacht
Model:	64	Hull Material:	
Year:	2020	Hull Type:	
Category:	Power		

Dimensions & Weight

Length:	64.00 ft	Draft - max:	4 ft 8 in - 1.42 meter
LOA:	68 ft - 20.73 meter	Bridge Clearance:	-
Beam:	19 ft 4 in - 5.89 meter	Dry Weight:	-
Deadrise Aft:	-		

Tank Capacities

Fuel Tank:	1320 gallons - 1 tank(s)	Holding Tank:	-
Fresh Water Tank:	369 gallons - 1 tank(s)		

Accommodations

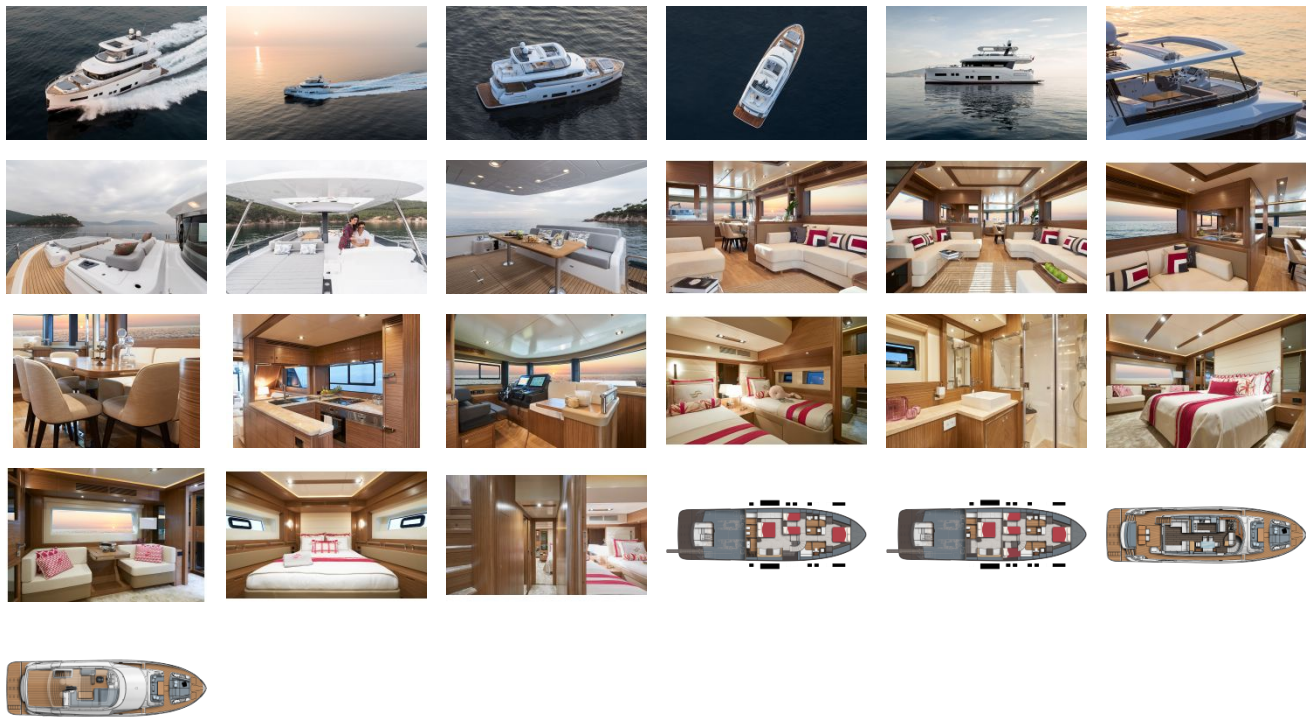
Total Cabins:	4	Crew Cabins:	1
Total Berths:	-	Crew Berths:	-
Total Sleeps:	8	Crew Sleeps:	2
Total Heads:	5	Crew Heads:	1
Captains Cabin:	No		

FEATURES

Attachment

- [Sirena 64 Brochure](#)

GALLERY



East Coast Yacht Sales
No Address entered
Phone: 555-555-5555