



Yachting Solutions
229 Commercial Street
Rockport, ME, US
Phone: (207) 236-8100

Nimbus 405 Flybridge

Boat Type: Flybridge



OVERVIEW

The flybridge has been constructed to harmonise fully with the design of the new coupé series. The roof has light, sweeping lines and incorporates the characteristic folding mast. A large, fixed skylight makes the saloon very light and airy despite the superstructure.

The flybridge features several cleverly functional and social spaces.

'We have put an extraordinary amount of work into layout and design in order to ensure an optimal flybridge. Not only to create a beautiful boat, but also to provide multifunctional social spaces with the right ambience,' said Joacim Gustafsson, head designer at Nimbus.

The flybridge includes a wet bar, with sink, grill and fridge, sun bed, large sofa and a twin helm seat. The twin seat can be turned through 180 degrees and thus form a roomy social seating group together with the sofa. If required the sofa can be easily converted into an additional sun bed.

All functions on the flybridge have been designed to allow the boat to pass beneath bridges after a few simple adjustments. Thanks to the "sidewalk" deck layout, walking space is maximised on the starboard side, making it very

easy to get on and off the boat and to spend time on deck, while allowing generous space in cockpit and cabin.

The Nimbus Coupé series has been built since 1969 and more than four thousand of these boats have been sold worldwide. The 405 Flybridge is built in Mariestad at the Nimbus boatyard.

SPECIFICATIONS

Basic Information

Manufacturer:	Nimbus	Boat Type:	Flybridge
Model:	405 Flybridge	Hull Material:	Fiberglass
Year:	2019	Hull Type:	Deep Vee
Category:	Power		

Dimensions & Weight

Length:	40.00 ft	Draft - max:	3 ft 6 in - 1.07 meter
LOA:	43 ft 8 in - 13.31 meter	Bridge Clearance:	15 ft 8 in - 4.78 meter
Beam:	12 ft 7 in - 3.83 meter	Dry Weight:	21837 ft
Deadrise Aft:	-		

Tank Capacities

Fuel Tank:	264 gallons - 2 tank(s)	Holding Tank:	35 gallons - 1 tank(s)
Fresh Water Tank:	105 gallons - 2 tank(s)		

Accommodations

Total Cabins:	3	Crew Cabins:	-
Total Berths:	6	Crew Berths:	-
Total Sleeps:	12	Crew Sleeps:	-
Total Heads:	-	Crew Heads:	-
Captains Cabin:	No		

FEATURES

Sidewalk design

“Sidewalk” is an asymmetrical deck layout where the side deck along the starboard side is extra wide and provides generous freedom of movement. It becomes convenient and enjoyable to move about on-board from bow to stern, and easy to get on and off the boat along the entire starboard side.

Maximum use is made of the interior volume, allowing the cockpit, saloon, lower deck and cabin to be larger than would otherwise be the case in a boat of this size. An important feature of the Nimbus sidewalk concept is the large flush fitted sliding door to starboard.

The sliding door provides quick access when laying alongside and enables manoeuvring the boat from a standing

position on the side deck. The sidewalk concept also allows the use of the aft deck for various activities. And on the foredeck the extra space is used to integrate a large sun deck as a natural feature of the boat's design.

Superstructure and saloon

Polyurethane glued windows in the superstructure and a large wrap around windscreen provide a very contemporary look, exceptional stability and a quiet saloon. Visibility is exemplary owing to uncluttered surfaces (nothing gets in the way), matt finish anti-reflecting materials and integrated folding wipers. Large flush-fitted sliding door at the helm and large sliding glass roof with integrated sun blinds.

Seating for four to five facing front. Divided into two seats at the helm and two-three seats at the reversible passenger sofa (the reversible passenger sofa was developed in the seventies for the Nimbus 26 and has been constantly developed and refined ever since).

The saloon has an open Scandinavian layout with large flat surfaces and is light and airy, roomy and modern, but made cosy at the same time by special lighting, wood fittings and attractive seating and cushion covers. The beautifully finished joinery in the saloon and cockpit exude a wonderful feeling of hand craft and quality. The large U-sofa seats 6-8. The dining table folds down into a cocktail table with glass holders, making the saloon a handy place for socialising.

The module designed galley (60CC) allows customised installations such as micro, electric hob, dishwasher, choice of ovens (electric or LPG). The galley is fitted with a fan that can be installed in the upper kitchen cupboard above the hob.

Properties and functionality

Boat Trim System" is standard and functions like trim tabs but with higher efficiency, speed and is automatic. An upgrade to Humphree Interceptor System is also available.

Automatic mechanical ventilation in the engine room reduces the temperature and extends the life length of the engines and provides the best conditions for problem-free boat ownership. Generous sized, strongly constructed aft stowage, aluminium lined and fitted behind the engines. In all, the 405 Coupe is a modern, solid and functional boat perfect for an uncomplicated and enjoyable life at sea and causing a minimum of environmental impact. The 405 is built in Sweden at the Nimbus yard in Mariestad.

Interior and cabins

The interior of the lower deck is a surprisingly spacious and well-fitted area. The bulkhead is upholstered in light fabric that increases the feeling of space while absorbing sound. There are three two berth cabins, one master cabin with en suite bathroom, the other two cabins sharing a shower and head. Light flows in through the master cabin skylight and provides a feeling of space. The light flowing down between the instrument panel and windscreen is a new feature of the 405 and lends the lower deck area a light and roomy ambience. An extra wardrobe is fitted on the lower deck.

Drive-train and engine compartment

The drive shaft with tunnel system is a well proven technology and has several advantages. The straighter shaft angle makes for a more efficient power line and thereby lower fuel consumption and more speed. Better course stability at low speeds and shallower draught.

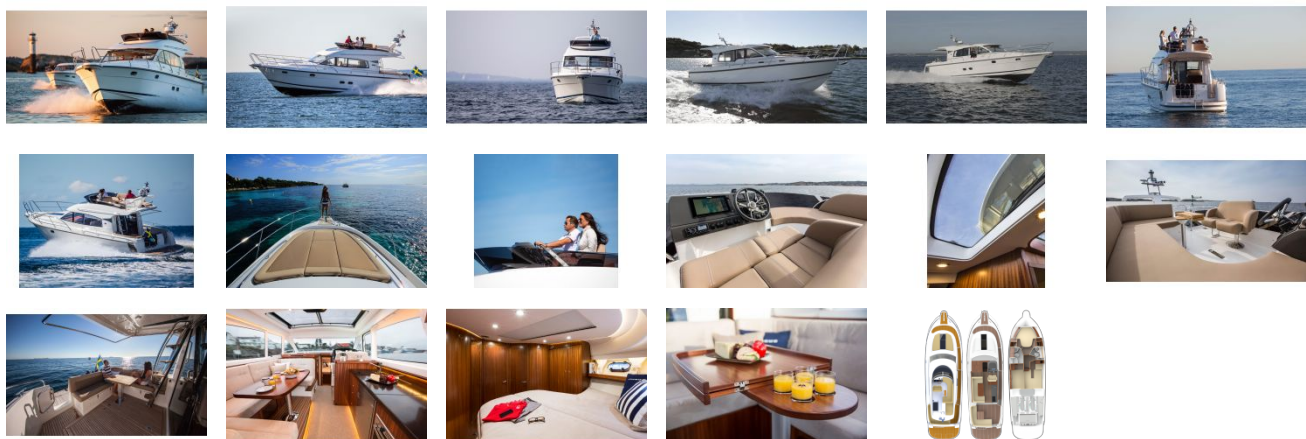
“Boat Trim System” is standard and offers higher efficiency and speed. An upgrade to Humphree Interceptor System is also available.

Generous sized, strongly constructed aft stowage, aluminium lined and fitted behind the engines.

Insulated, strong and light

All laminate in the boat is vacuum injected at the Nimbus boatyard in Mariestad, Sweden. Everything from hull, deck, superstructure, interior laminated surfaces and hatches. “Divinycell” is used in the sandwich laminate, providing excellent insulation properties from both heat and cold and transports condensation away very efficiently. “Inner liner” and “head liner” are built entirely of glass fibre. The result is easy-to-clean, smooth surfaces in the stowage lockers, stowage areas, sides and ceiling. The vacuum injection method, in combination with high quality material and multilayer woven glass fibre matting, result in a hull and laminate that is insulated, strong and light.

GALLERY



Yachting Solutions
229 Commercial Street
Rockport, ME, US
Phone: (207) 236-8100