

# Nimbus Tender 9

Boat Type: Tender



## OVERVIEW

### SPECIFICATIONS

#### Basic Information

Manufacturer:	Nimbus	Boat Type:	Tender
Model:	Tender 9	Hull Material:	
Year:	2019	Hull Type:	
Category:	Power		

## Dimensions & Weight

Length:	30.00 ft	Draft - max:	-
LOA:	30 ft 6 in - 9.3 meter	Bridge Clearance:	-
Beam:	-	Dry Weight:	-
Deadrise Aft:	-		

## Tank Capacities

Fuel Tank:	85 gallons - 1 tank(s)	Holding Tank:	-
Fresh Water Tank:	21 gallons - 1 tank(s)		

## Accommodations

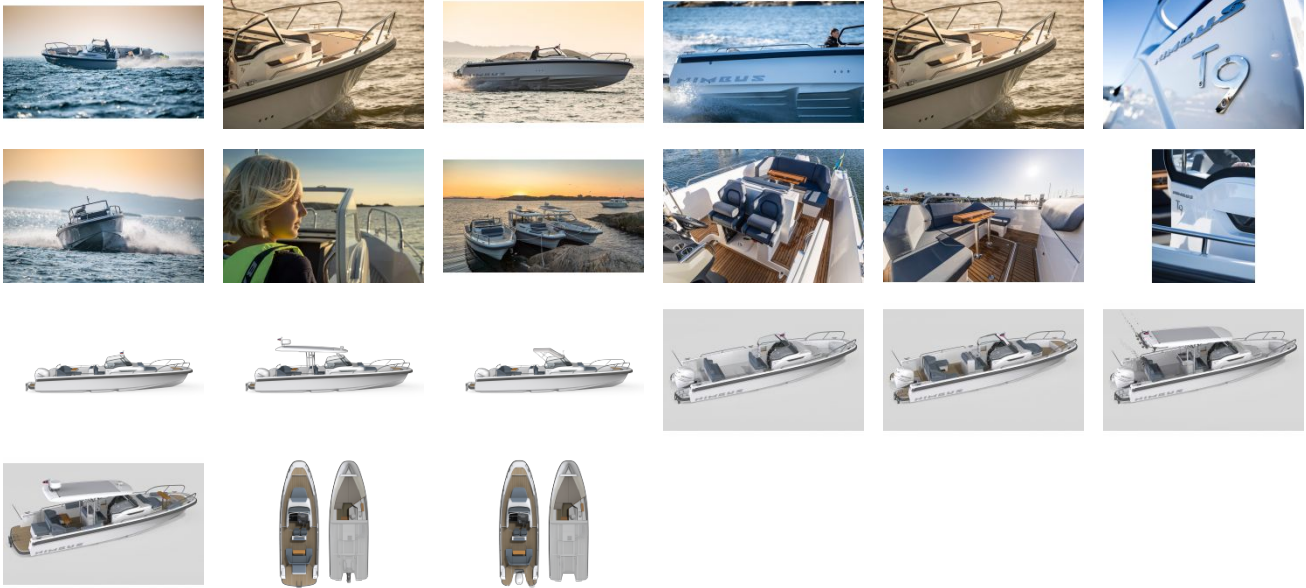
Total Cabins:	-	Crew Cabins:	-
Total Berths:	-	Crew Berths:	-
Total Sleeps:	2	Crew Sleeps:	-
Total Heads:	1	Crew Heads:	-
Captains Cabin:	No		

## FEATURES

### Standard Equipment

Mercury Verado 300 hp outboard engine  
Bow thruster  
Zipwake dynamic trim-control system  
Garmin GPSMAP 7410xsv (10 inch)  
Port canopy and sofa cover  
Shower on aft deck  
Fresh water system  
Head  
Refrigerator  
Lightning package  
Stainless steel pulpit  
Carpets and decoration pillows

# GALLERY



**Yachting Solutions**  
229 Commercial Street  
Rockport, ME, US  
Phone: (207) 236-8100