



Stan Miller Yachts
245 Marina Drive
Long Beach, CA, US
90803
Phone: 562-598-9433

Sabre 58 Salon Express

Boat Type: Motor Yacht



OVERVIEW

The 58 Salon Express design features large windows to flood the living areas in natural light, and a main door that opens fully from port to starboard, comfortably merging exterior and interior spaces.

Located aft within the pilothouse, her fully-equipped galley boasts a u-shaped counter to port with cooktop, sink, and ample under-counter storage, balanced to starboard with another stretch of linear counter and storage. From there, a single step accesses the salon, and the helm deck, creating a graceful and practical social space.

Below deck, the 58 Salon Express houses three cabins each with en-suite head and shower, and including an expansive, full-beam master stateroom with a walk-around king berth, a generously proportioned head and shower unit, and abundant storage.

SPECIFICATIONS

Basic Information

Manufacturer:	Sabre	Boat Type:	Motor Yacht
Model:	58 Salon Express	Hull Material:	Fiberglass
Year:	2021	Hull Type:	
Category:	Power		

Dimensions & Weight

Length:	58.00 ft	Draft - max:	4 ft 9 in - 1.45 meter
LOA:	63 ft 9 in - 19.43 meter	Bridge Clearance:	-
Beam:	16 ft 2 in - 4.93 meter	Dry Weight:	-
Deadrise Aft:	-		

Tank Capacities

Fuel Tank:	800 gallons - 1 tank(s)	Holding Tank:	100 gallons - 1 tank(s)
Fresh Water Tank:	230 gallons - 1 tank(s)		

Accommodations

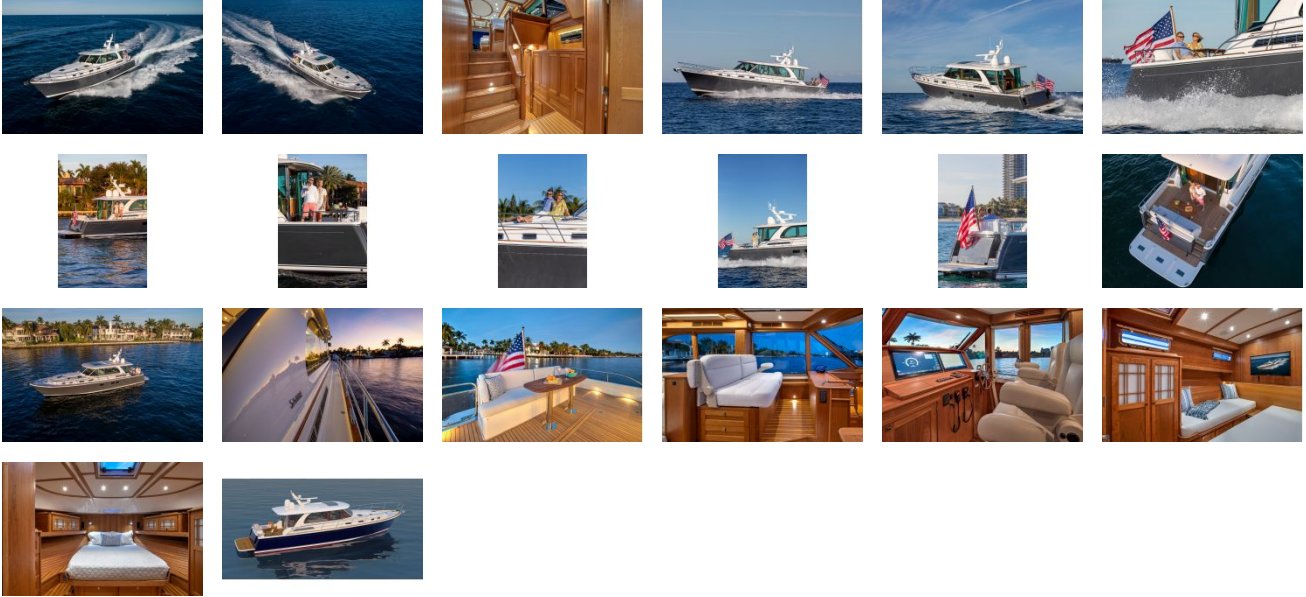
Total Cabins:	-	Crew Cabins:	-
Total Berths:	-	Crew Berths:	-
Total Sleeps:	-	Crew Sleeps:	-
Total Heads:	-	Crew Heads:	-
Captains Cabin:	No		

FEATURES

External Links

- [View All Specifications](#) SABRE 58 SALON EXPRESS
- [Virtual Tour](#)

GALLERY



Stan Miller Yachts
245 Marina Drive
Long Beach, CA, US
90803
Phone: 562-598-9433