



Annapolis Yacht Sales
7350 Edgewood Rd.
Annapolis, MD 21403
Phone: 410.267.8181

Beneteau Oceanis 30.1

Boat Type: Cruiser



OVERVIEW

The Oceanis 30.1 is easy to sail but lively to helm and promises new experiences and thrills. This robust little smart cruiser is small enough to trail, opening up endless possibilities for sailing on lakes and rivers, as well as coastal sailing and high sea adventures

SPECIFICATIONS

Basic Information

Manufacturer:	Beneteau	Boat Type:	Cruiser
Model:	Oceanis 30.1	Hull Material:	
Year:	2020	Hull Type:	
Category:	Sail		

Dimensions & Weight

Length:	30.10 ft	Draft - max:	-
LOA:	31 ft 3 in - 9.53 meter	Bridge Clearance:	-
Beam:	9 ft 10 in - 3 meter	Dry Weight:	-
Deadrise Aft:	-		

Tank Capacities

Fuel Tank:	34 gallons - 1 tank(s)	Holding Tank:	-
Fresh Water Tank:	42 gallons - 1 tank(s)		

Accommodations

Total Cabins:	-	Crew Cabins:	-
Total Berths:	-	Crew Berths:	-
Total Sleeps:	-	Crew Sleeps:	-
Total Heads:	-	Crew Heads:	-
Captains Cabin:	No		

FEATURES

Exterior Design

With a stemhead and her hard-chine hull and well-proportioned sides and coachroof, the Oceanis 30.1 looks unashamedly like a small yacht. The Finot-Conq plan has met the double challenge of power and simple navigation. With her slender bow, optimized weight, stiff canvas and square-top mainsail, she performs well in all points of sailing. For beginners or for short-handed sailing, the self-tailing jib and the single winch make her easy to handle. For performance, the Oceanis 30.1 has a large overlapping genoa, a furling code zero and an asymmetric spinnaker. Aft, a step affords access to the sea and can be supplemented by a small lifting platform.

Interior Design

With a few extra inches won in strategic places, the Oceanis 30.1 differs from other boats, thanks to a headspace of 6.5 ft in all the places inside where it is comfortable to stand. The two good-sized double cabins each have berths running lengthwise and an open entryway making them feel particularly spacious. The two benches in the saloon provide an additional place for two extra berths. The large shower room is divided into a marine toilet on one side and shower and washbasin on the other. At the foot of the gently sloping companionway, the L-shaped galley has top and bottom storage, a 20 US Gal refrigerator and a real oven under the gas hob.

For everyone

With unbeatable living space for its size and a focus on simplicity of use, the smallest model of the cruising range is

nevertheless stylish, and fast, with a highly competitive ready-to-sail price.

Trailing

With an overall size of under 9x3 metres and a weight of less than 4 tonnes, the Oceanis 30.1 can be trailed by road by a professional, without the issues of an extra-wide load. In its lifting keel and rotating mast version, the cruiser can sail along canals and rivers to its sailing grounds.

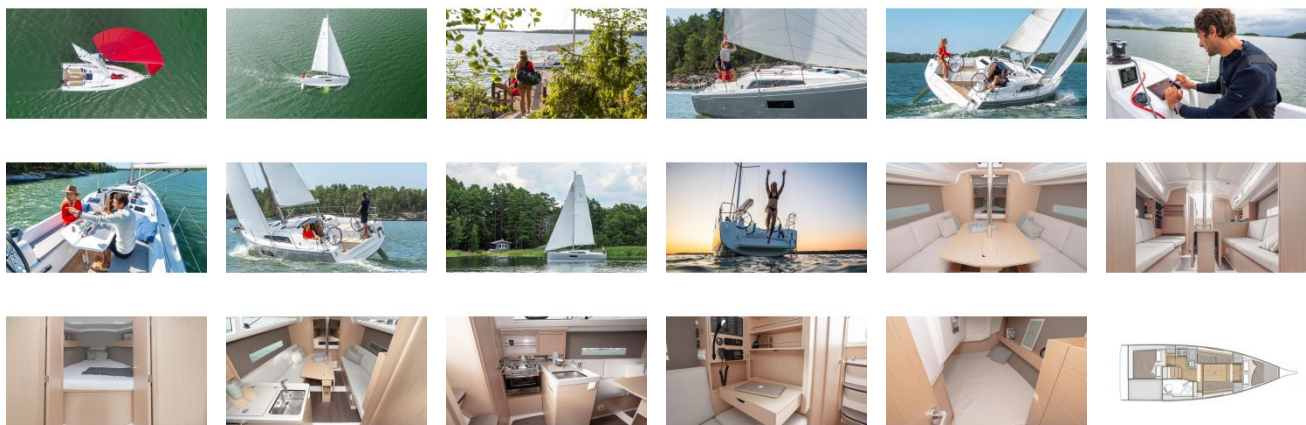
Choice of Helm

On the Oceanis 30.1, sailors get to choose between a tiller on double rudders for anyone enjoying a few thrills or from the world of dinghy sailing, or double steering wheel for anyone who prefers space and comfort!

Cockpit

The double steering wheel layout results in a wonderfully big cockpit. On either side of the large fold-away table are two large benches, which comfortably seat up to six guests.

GALLERY



Annapolis Yacht Sales
7350 Edgewood Rd.
Annapolis, MD 21403
Phone: 410.267.8181