



**GSPS Marine**  
3807 Gulf Shores Parkway,  
Gulf Shores, AL, 36542  
Phone: 251-948-6748

# Cobia 240 CC

Boat Type: Center Console



## OVERVIEW

The 240 CC is the latest Cobia to seamlessly mesh tournament capability, family comfort, and style into a single package. Built on a proven hull with superior fuel efficiency and open water running performance, the contemporary deck layout maximizes form and function. A wide open cockpit with level floor from bow to stern, twin 33 gallon in-floor fishboxes, a 28 gallon livewell, and a standard aft tackle station are designed to meet even the most hardcore angler's needs. When the fishing is finished, the 240CC is equally adept as a platform for hosting an elegant sunset cruise or spending a casual day sandbar hopping. Passengers and guests will especially appreciate all the bigger boat amenities like the forward entry walk down head, hideaway rear bench seat with backrest, and the upgrade cushion packages that include double-bolstered helm seats and forward facing backrests for the bow. There's not a better looking and more feature-packed 24 footer on the water.

## SPECIFICATIONS

### Basic Information

Manufacturer:	Cobia	Boat Type:	Center Console
Model:	240 CC	Hull Material:	
Year:	2020	Hull Type:	
Category:	Power		

### Dimensions & Weight

Length:	24.00 ft	Draft - max:	1 ft 5 in - 0.43 meter
LOA:	23 ft 7 in - 7.19 meter	Bridge Clearance:	-
Beam:	8 ft 10 in - 2.69 meter	Dry Weight:	3500 ft
Deadrise Aft:	22.00 °		

### Tank Capacities

Fuel Tank:	125 gallons - 1 tank(s)	Holding Tank:	-
Fresh Water Tank:	-		

### Accommodations

Total Cabins:	-	Crew Cabins:	-
Total Berths:	-	Crew Berths:	-
Total Sleeps:	-	Crew Sleeps:	-
Total Heads:	-	Crew Heads:	-
Captains Cabin:	No		

## FEATURES

### Engine Options

- F300UCA- Optional
- No motor- Optional
- Twin F115XB- Optional
- Twin F150XB- Optional
- Twin F150XCA- Optional

### Other Color Options

- Black hardtop trim (doors, lights)- Optional
- Black trim HSTS- Optional
- Gelcoat console helm & footrest, atlantic blue- Optional
- Gelcoat console helm & footrest, pastel green- Optional
- Gelcoat console helm & footrest, whisper grey- Optional
- Gelcoat console helm & footrest, custom drk color- Optional
- Gelcoat console helm & footrest, custom lt color- Optional
- Gelcoat console helm & footrest, haze grey- Optional
- Gelcoat console helm & footrest, lauderdale blue- Optional

- Gelcoat console helm & footrest, pure white- Optional
- Gelcoat hardtop, 2-tone underside atlantic blue- Optional
- Gelcoat hardtop, 2-tone underside custom drk color- Optional
- Gelcoat hardtop, 2-tone underside custom lt color- Optional
- Gelcoat hardtop, 2-tone underside haze grey- Optional
- Gelcoat hardtop, 2-tone underside lauderdale blue- Optional
- Gelcoat hardtop, 2-tone underside pastel green- Optional
- Gelcoat hardtop, 2-tone underside pure white- Optional
- Gelcoat hardtop, 2-tone underside whisper grey- Optional
- Gelcoat helm seat base/lp frp parts atlantic blue- Optional
- Gelcoat helm seat base/lp frp parts custom drk color- Optional
- Gelcoat helm seat base/lp frp parts custom lt color- Optional
- Gelcoat helm seat base/lp frp parts haze grey- Optional
- Gelcoat helm seat base/lp frp parts lauderdale blue- Optional
- Gelcoat helm seat base/lp frp parts pastel green- Optional
- Gelcoat helm seat base/lp frp parts pure white- Optional
- Gelcoat helm seat base/lp frp parts whisper grey- Optional

## **Steering and Handling**

- Hydraulic tilt steering- Standard
- Power assist steering- Optional
- Steering wheel upgrade : Edson w/ power knob upgrade (stainless)- Optional
- Steering wheel upgrade : Edson w/ power knob upgrade (black)- Optional
- Trim tab indicator- Optional
- Trim tabs- Standard
- Yamaha fuel/water separator & control cables (w/ engine option)- Standard

## **Quality Finish and Construction**

- Boot stripe gunmetal grey- Optional
- Boot stripe sapphire blue- Optional
- Boot stripe white- Optional
- Cleats, heavy duty, pull-up (7)- Standard
- Powder coating package gloss black- Optional
- Powder coating package grey- Optional
- Powder coating package matte black- Optional
- Powder coating package white- Optional
- Stainless steel rub rail- Standard
- White rub rail w/ stainless steel insert upgrade- Optional

## **Family Features**

- All white cushion color- Standard
- Boarding ladder- Standard
- Cockpit bolsters (aft)- Standard
- Cushion, bow (6 pc set)- Optional
- Electric head w/ macerator- Optional
- Forward-facing bow backrests (port & stbd)- Optional
- Fresh water washdown system- Standard
- Head, pump-out w/ deck fitting (w/ port window)- Optional
- Insulated cooler in console (24 qt)- Standard

- Portable head (w/ port window)- Optional
- Raw water wash down- Optional
- Speakers JL Audio for hard top, 4 black- Optional
- Speakers JL Audio for hard top, 4 white- Optional
- Stereo JL Audio w/ amp & speakers, 4 black- Optional
- Stereo JL Audio w/ amp & speakers, 4 white- Optional
- T-top fiberglass hard top (integrated frame)- Optional
- T-top fiberglass hard top (integrated frame w/ windshield)- Optional
- Tri-color platinum cushions with custom Bentley stitching- Optional
- Two-tone cushion color upgrade (grey/white)- Optional
- Two-tone cushion color upgrade (almond/tan)- Optional

## **Fishing Features**

- Cockpit insulated fish boxes (2-33 gal)- Standard
- Fish box pump-out w/ macerator- Optional
- Garmin transducer B175L upgrade for 10in systems- Optional
- Garmin 10in touchscreen w/ sonar (GPSMAP 7610XSV)- Optional
- Garmin transducer B175L upgrade for 12in systems- Optional
- Garmin 12in touchscreen w/ sonar (GPSMAP 7612XSV)- Optional
- Garmin VHF 200 radio w/ antenna- Optional
- Garmin master electronics suite- Optional
- Livewell (28 gal)- Standard
- Outriggers- Optional
- SS gunnel rod holders (4)- Standard
- T-top kingfish rod holders (1 port, 1 stbd) hard top- Optional
- Under-gunnel rod storage- Standard

## **Livewells and Pumps**

- Automatic bilge pump (addl)- Optional
- Ultra bilge pump switch (upgrade)- Optional

## **Cockpit and Storage**

- Anchor hanger in bow- Optional
- Helm seat tackle station (w/ premium upgraded seating, white)- Optional
- Helm seat tackle station (w/ premium upgraded seating, almond/tan)- Optional
- Helm seat tackle station (w/ premium upgraded seating, grey/white)- Optional
- Helm seat tackle station w/ premium, white w/ black Bentley stitching- Optional
- Leaning post tackle station (standard)- Optional
- Self-bailing cockpit- Standard

## **Safety, Comfort and Convenience**

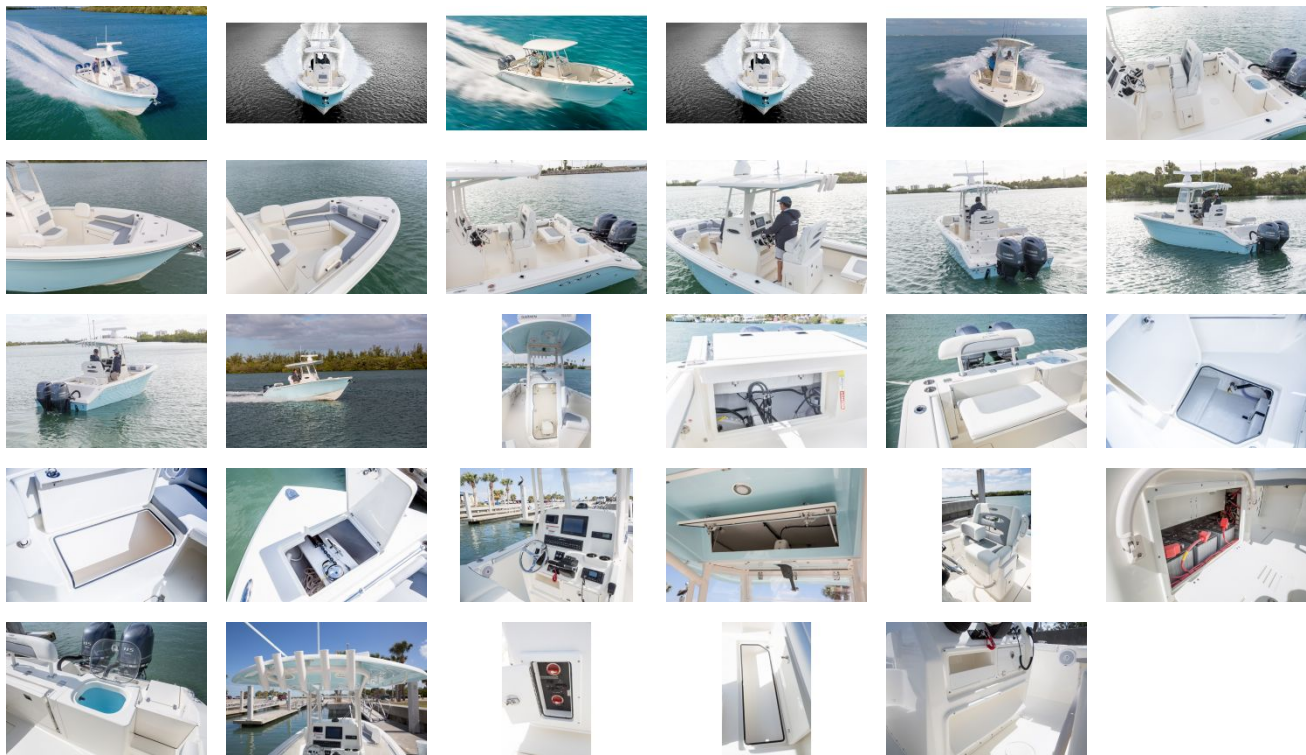
- Bow rail (fully recessed)- Standard
- Cobia trailer no windlass (tandem axle)- Optional
- Cobia trailer for windlass (tandem axle)- Optional
- Cockpit lights, compass & helm footrest- Standard
- Cockpit toe rail- Optional
- Console seating w/ backrest & cushion- Standard
- Rear seating w/ backrest- Standard
- Shipping cover (Transhield), single engine)- Optional

- Shipping cover (Transshield), twin engines)- Optional
- Shipping cover : None- Optional
- Trailer aluminum wheels option (each) qty: \_\_\_\_\_ Optional
- Trailer spare tire option- Optional

## **Lights and Electric**

- Battery 31 series- Optional
- Battery charger (w/ inlet)- Optional
- Battery charger (3-bank)- Optional
- Line upgrade for windlass system : 300ft- Optional
- SS flush mount flip-up bow light- Standard
- Stainless steel anchor upgrade for windlass system- Optional
- Tray & wiring for additional battery- Optional
- Underwater lights, blue (set of 2)- Optional
- Waterproof Deutsch electrical connectors- Standard
- Windlass Deluxe: chain, rope, anchor & stem chafing guard- Optional
- Wireless remote for windlass system- Optional

GALLERY



**GSPS Marine**  
3807 Gulf Shores Parkway,  
Gulf Shores, AL, 36542  
Phone: 251-948-6748