



**GSPS Marine**  
3807 Gulf Shores Parkway,  
Gulf Shores, AL, 36542  
Phone: 251-948-6748

# Cobia 240 DC

Boat Type: Dual Console



## OVERVIEW

The most feature packed 24 foot dual console on the water! From its spacious and clean layout to its wealth of smart amenities, the new Cobia 240 DC beckons you to a relaxing, sun-drenched day on the water. Dedicated seating with deluxe, Bentley-style upholstery for nine, including a hideaway aft bench and a convertible first-mate's chaise lounge, means everybody on board will ride in style and comfort. Additional standard family features include a hardtop with LED down lighting and ski pylon, walk down head with sink, Corian countertop and macerated electric head, and an extended swim platform with hidden telescoping ladder. It even comes with a standard bow boarding ladder and the option for a plug-in bow table. But just because comfort is at a premium it doesn't mean that the serious angler is forgotten. This boat expertly melds all its soft touches with standard fishing features like dual in-floor 24 gallon fishboxes (macerators optional), a 22 gallon fully plumbed livewell, plenty of rod and tackle storage, and a bait prep area with sink. Combine all this and there's no better looking, more feature rich and better performing 24 foot dual console on the water.

## SPECIFICATIONS

### Basic Information

Manufacturer:	Cobia	Boat Type:	Dual Console
Model:	240 DC	Hull Material:	
Year:	2020	Hull Type:	
Category:	Power		

### Dimensions & Weight

Length:	24.00 ft	Draft - max:	-
LOA:	25 ft 1 in - 7.64 meter	Bridge Clearance:	-
Beam:	8 ft 10 in - 2.69 meter	Dry Weight:	4200 ft
Deadrise Aft:	22.00 °		

### Tank Capacities

Fuel Tank:	123 gallons - 1 tank(s)	Holding Tank:	-
Fresh Water Tank:	-		

### Accommodations

Total Cabins:	-	Crew Cabins:	-
Total Berths:	-	Crew Berths:	-
Total Sleeps:	-	Crew Sleeps:	-
Total Heads:	-	Crew Heads:	-
Captains Cabin:	No		

## FEATURES

### Engine Options

- F300UCA *Optional*
- No motor *Optional*

### Other Color Options

- Black hardtop trim (lights) *Optional*
- Gelcoat hardtop, 2-tone underside atlantic blue *Optional*
- Gelcoat hardtop, 2-tone underside custom drk color *Optional*
- Gelcoat hardtop, 2-tone underside custom lt color *Optional*
- Gelcoat hardtop, 2-tone underside haze grey *Optional*
- Gelcoat hardtop, 2-tone underside lauderdale blue *Optional*
- Gelcoat hardtop, 2-tone underside pastel green *Optional*
- Gelcoat hardtop, 2-tone underside pure white *Optional*
- Gelcoat hardtop, 2-tone underside whisper grey *Optional*
- Gelcoat helm seat base/lp frp parts atlantic blue *Optional*
- Gelcoat helm seat base/lp frp parts custom drk color *Optional*

- Gelcoat helm seat base/lp frp parts custom lt color *Optional*
- Gelcoat helm seat base/lp frp parts haze grey *Optional*
- Gelcoat helm seat base/lp frp parts lauderdale blue *Optional*
- Gelcoat helm seat base/lp frp parts pastel green *Optional*
- Gelcoat helm seat base/lp frp parts pure white *Optional*
- Gelcoat helm seat base/lp frp parts whisper grey *Optional*
- Painted engine(s) - black *Optional*
- Painted engine(s) - white *Optional*

## Steering and Handling

- Electronic Optimus power steering *Optional*
- Hydraulic tilt steering *Standard*
- Power assist steering *Optional*
- Prop *Standard*
- Steering wheel upgrade : Edson w/ power knob upgrade (stainless) *Optional*
- Steering wheel upgrade : Edson w/ power knob upgrade (black) *Optional*
- Trim tab indicator *Optional*
- Trim tabs *Standard*
- Yamaha fuel/water separator & control cables (w/ engine option) *Standard*

## Quality Finish and Construction

- Boot stripe gunmetal grey *Optional*
- Boot stripe sapphire blue *Optional*
- Boot stripe white *Optional*
- Powder coating package (black, incl t-top) *Optional*
- Powder coating package (grey, incl t-top) *Optional*
- Powder coating package (matte black, incl t-top) *Optional*
- Powder coating package (white, incl t-top) *Optional*
- Premium fade-resistant gelcoat *Standard*
- Stainless steel rub rail *Standard*
- Stainless steel thru-hulls w/ seacocks below water line *Standard*
- White rub rail w/ stainless steel insert upgrade *Optional*

## Family Features

- Boarding ladder (covered stern, hideaway bow) *Standard*
- Cockpit bolsters (aft) *Standard*
- Cushion, bow (8 pc set) *Standard*
- Electric head w/ macerator *Standard*
- Forward table/sun lounge *Optional*
- Fresh water at transom (9 gal tank for 2 sinks and shower) *Standard*
- Fresh water sink in head & prep station *Standard*
- Head comfort appointments (tp holder, mirror) *Standard*
- Hideaway aft bench seating *Standard*

- Insulated cooler in port lounge (91 qt) *Standard*
- Integrated ski tow pylon on tower *Standard*
- Plush seating for up to 9 passengers *Standard*
- Prep station w/ sink *Standard*
- Raw water wash down *Optional*
- Roomy walk down head area with sink and Corian top *Standard*
- Stereo JL Audio w/ amp & speakers, 8 black *Optional*
- Stereo JL Audio w/ amp & speakers, 8 white *Optional*
- Swim/dive platform extended *Standard*
- T-top fiberglass hard top (w/ spreader light & rod holders) *Standard*
- Tri-color platinum cushions with custom Bentley stitching *Standard*
- USB outlets and cupholders throughout *Standard*

## **Fishing Features**

- VHF 200 radio w/ antenna *Optional*
- Cockpit insulated fish boxes (2, 24 gal) *Standard*
- Fish box pump-out w/ macerator *Optional*
- Garmin 10in touchscreen w/ sonar (GPSMAP 7610XSV) *Optional*
- Garmin autopilot for EPS steering *Optional*
- Garmin radar (GMR 424) *Optional*
- Livewell (22 gal) *Standard*
- Outriggers (for t-top) *Optional*
- SS gunnel rod holders (2 port, 2 stbd) *Standard*

## **Livewells and Pumps**

- Ultra bilge pump switch (upgrade) *Optional*

## **Cockpit and Storage**

- Anchor hanger in bow *Optional*
- Anchor locker *Standard*
- Helm seat premium *Standard*
- Self-bailing cockpit *Standard*

## **Safety, Comfort and Convenience**

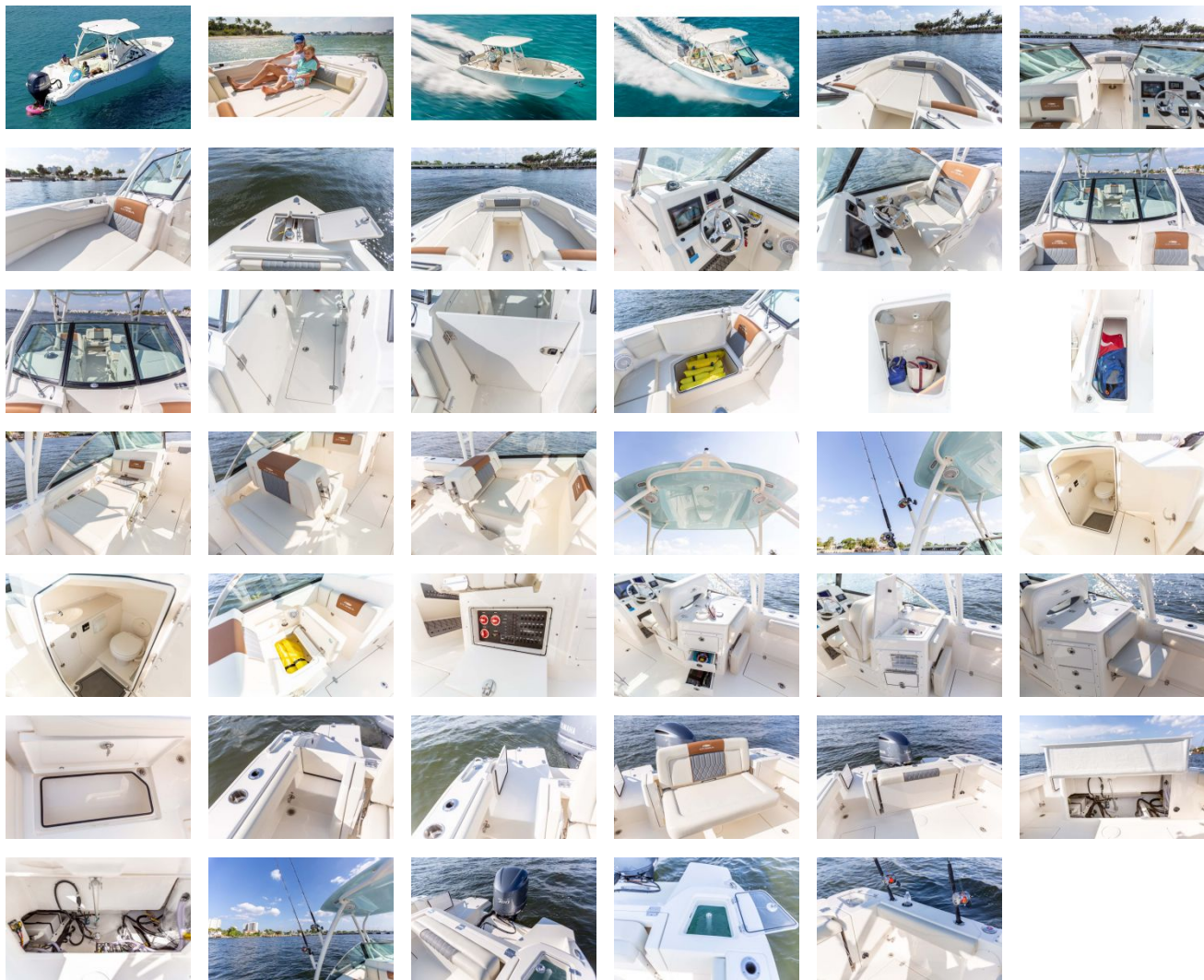
- Bow rail (fully recessed) *Standard*
- Cobia trailer (tandem axle, no windlass) *Optional*
- Cobia trailer (tandem axle, w/ windlass) *Optional*
- Cockpit lights, compass & helm footrest *Standard*
- Convertible lounge seating *Standard*
- Rear seating w/ backrest *Standard*
- Shipping cover (Transhield) *Optional*
- Shipping cover : None *Optional*
- SS flush mount pull-up cleats (7) *Standard*

- Standard all glass wraparound windshield *Standard*
- Trailer aluminum wheels option (each) qty: \_\_\_\_\_ *Optional*
- Trailer spare tire option *Optional*

## **Lights and Electric**

- Battery 31 series *Optional*
- Battery charger (3-bank w/ inlet) *Optional*
- Battery charger (2-bank w/ inlet) *Optional*
- Line upgrade for windlass system : 300ft *Optional*
- SS flush mount flip-up bow light *Standard*
- Stainless steel anchor upgrade for windlass system *Optional*
- Underwater lights, blue (set of 2) *Optional*
- Waterproof Deutsch electrical connectors *Standard*
- Windlass Deluxe: chain, rope, anchor & stem chafing guard *Optional*
- Wireless remote for windlass system *Optional*

GALLERY



**GSPS Marine**  
3807 Gulf Shores Parkway,  
Gulf Shores, AL, 36542  
Phone: 251-948-6748