



Viage Group
7981 N Tamiami Trail
Sarasota, FL, US
Phone: 941.444.5375

Beneteau Flyer 10

Boat Type: Cruiser



OVERVIEW

As pleasant to the eye as she is to live aboard, the Flyer 10 has taut lines attractively accentuated by a full-beam windshield with side panes. The driving station allows four people facing the sea to enjoy all the thrills, with two bolster seats beside the console and a double seat on the port side. The cockpit has increased space and modularity, with foot-rest seats as well as an aft bench that folds back in seconds to form a large sunbathing area overlooking the swim platform. A rigid T-top or bimini can be installed to protect this area.

Featuring the “smart walkaround” concept, the Flyer 32 marries easy movement on board with safety, and with an asymmetric single port walkway, she offers a bigger deck space, with a vast three people sunbathing area, and a unique amount of cabin space.

Bordering on a sport cruiser, the Flyer 32 provides unique living space. The two double berths, divided among a salon cabin and a mid-cabin, mean that you can spend a few nights on board. The boat is truly comfortable with a proper shower room, with a head separate from the shower, in addition to a large storage space at the foot of the stairway. Two long hull windows pleasantly bathe the interior in light.

SPECIFICATIONS

Basic Information

Manufacturer:	Beneteau	Boat Type:	Cruiser
Model:	Flyer 10	Hull Material:	
Year:	2021	Hull Type:	
Category:	Power		

Dimensions & Weight

Length:	32.00 ft	Draft - max:	4 ft 3 in - 1.3 meter
LOA:	32 ft 9 in - 9.98 meter	Bridge Clearance:	-
Beam:	10 ft 11 in - 3.33 meter	Dry Weight:	-
Deadrise Aft:	-		

Tank Capacities

Fuel Tank:	212 gallons - 2 tank(s)	Holding Tank:	-
Fresh Water Tank:	42 gallons - 1 tank(s)		

Accommodations

Total Cabins:	1	Crew Cabins:	-
Total Berths:	1	Crew Berths:	-
Total Sleeps:	-	Crew Sleeps:	-
Total Heads:	1	Crew Heads:	-
Captains Cabin:	No		

FEATURES

Ready to embark up to 11 passengers and fitted out so that you can spend a few extra nights at sea, this new dayboat bordering on a sport cruiser allows a variety of exciting programmes.

Engines

Powered by 2 x 350 hp engines, the Flyer 32 is equipped with Airstep® 2 technology and lifts off in just a few seconds to reach more than 40 knots.

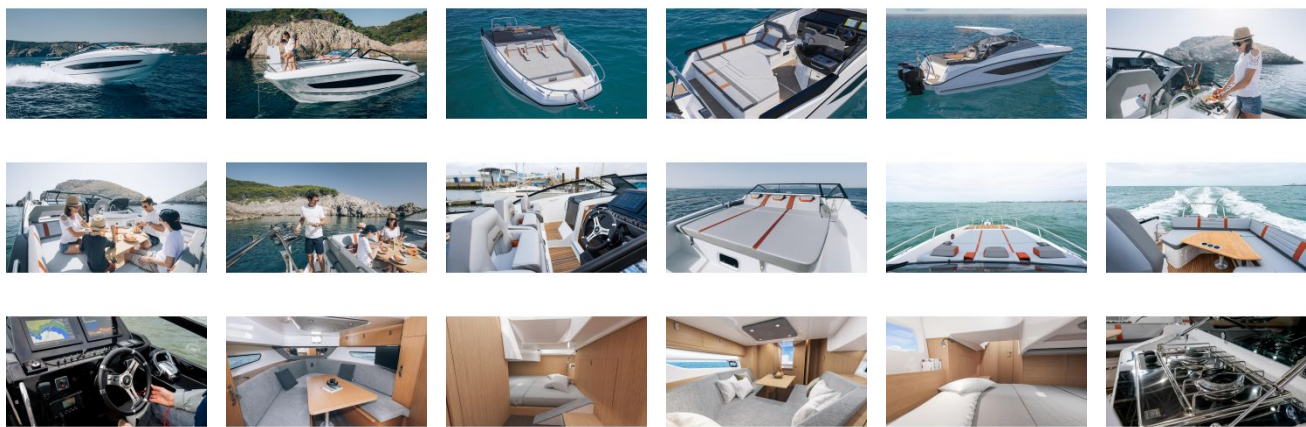
Sun Pad

This outboard powerboat boasts a distinctive “smart walkaround” concept that combines the easy movement and safety advantages of the walkaround, but with just one asymmetric walkway to port, offering greater deck and cabin space. The fore deck features a vast three place sun pad.

Deck Galley

The galley behind the driving station is fully fitted, so that you can cook real meals while enjoying life aboard. There is a refrigerator, sink, twin burner above an oven, storage and even a small worktop.

GALLERY



Viage Group
7981 N Tamiami Trail
Sarasota, FL, US
Phone: 941.444.5375