



**South Jersey Yacht Sales**  
900 Ocean Drive  
Cape May, NJ 08204  
Phone: 609-884-1600

# Viking 93MY

Boat Type: Motor Yacht



## OVERVIEW

The Viking Yacht Company's second 93 Motor Yacht was recently completed and is available for immediate delivery. With her striking Flag Blue exterior, swept-back profile and elegant starboard-side balcony, this seven-stateroom, two-salon beauty was the star of the recent boat show season. And it's no wonder as she features dazzling indoor and outdoor entertainment and dining areas, superb workmanship, large comfortable entertainment zones as well as royally-appointed private staterooms.

Her main aft deck is adorned with custom flexible toekick lighting and overhead linear lighting that can be shown in multiple colors and programmed to the beat of your favorite music. Sliding stainless-steel-framed glass doors open wide, leading you from the teak aft deck to the stylish and luxurious salon. Walnut woodwork with a gloss finish complements hardwood flooring in the salon and galley.

Making full use of a beam that spans 24 ft. 4 in., the 93's interior has more volume than many 100-plus-footers. A three-piece sofa, a swivel chair, a custom two-piece polished white marble cocktail table, end tables and an entertainment center with a pop-up 65-inch HD TV highlight the salon's many amenities. Guests will be awed by this yacht's formal dining area, which seats eight and features a tray ceiling with LED lighting that

illuminates a finely crafted custom wood table. The bulkhead separating the dining area and forward galley is dressed with a custom Chinchilla Night Blue fabric upholstered in symmetrical blocks, creating a soft tactile look, with a centered painting under its own light.

Chefs have all of the latest appliances and conveniences at their disposal in the forward country kitchen-style galley, including a full-size 7-foot-tall Sub-Zero refrigerator, microwave convection oven, four-burner cooktop with conventional oven below, dishwasher, a two-bowl stainless steel sink and a trash compactor. Four bar stools surround a galley island that's topped with jet black Caesarstone. A raised banquette with a walnut table faces aft. Large wraparound forward windows bring the outside in, allowing you to enjoy the scenery while you have breakfast, lunch or a snack.

The enclosed bridge not only serves as the control station for the captain but as a second salon, with an L-shaped sofa to port, cocktail table with Caesarstone top and two ottomans (with interior storage), an entertainment center with a 55" HD TV and a day head. The glass-paneled sunroof and its shade are electric powered as is the aft windshield above the bar. The stainless-steel-framed bi-folding glass doors open to the aft teak deck - yet another exquisite gathering area that invites socialization, complete with a bar and a grill, corner sink, refrigerator and four-stool seating. A custom interior stainless steel staircase connects the enclosed bridge with the salon, plus exterior stairs join the upper and lower aft decks.

A starboard-side staircase in the salon provides private access to the master stateroom, while a second stairway forward leads to four additional staterooms. The master stateroom is particularly commodious and luxurious. Spanning the beam, this large space includes a king bed, a 65" HD TV, a port-side vanity/desk and a walk-closet. Large enough for two people to comfortably move about, the head is appointed with twin sinks, a mirrored ceiling and a walk-in shower. The vanity top and shower floor and walls are made with Caesarstone - their grey and off-white colors blend artfully with the custom wallpaper. The forward VIP stateroom's raised queen bed with oversized walk-around area has a skylight with hatch and Oceanair screen shade. Channell Glass artwork is ensconced in the custom headboard.

The captain and crew also have first-class accommodations, and direct access to the engine room. A common area, which includes a countertop with microwave and refrigerator and a seating area with fold-down table, separates the captain's and the crew stateroom. Each has a 22" flat-screen TV, a hanging locker, an end table and carpeted floor.

A pair of state-of-the-art Caterpillar C32A (1925MHP) engines are mounted in Viking's expertly engineered and constructed engine room, which is also equipped with a Seakeeper gyro SK 35, twin 55 kW gensets and an ASEA transformer. The powerplants team up with a bow and stern thruster and are tied into ZF's JMS with joystick and station keeping. Dual wing stations are ideal for docking situations. Chilled water air conditioning provides cooling and heat throughout the yacht with individual thermostats in the staterooms and the salon for efficient climate control.

Other features that will heighten your yachting experience include Nautical Structures Carbon Fiber Yacht Stairs for easy dockside ingress/egress; a garage door (with hydraulic-lift door) designed for tender storage; a hydraulically powered swim platform that can be lowered below water level; and bow lounge areas with sunpads and a sunshade.

We invite you to contact your authorized Viking dealer for more information about this 93 MY or any of our motor yachts.

SPECIFICATIONS

Basic Information

Manufacturer:	Viking	Boat Type:	Motor Yacht
Model:	93MY	Hull Material:	Composite
Year:	2020	Hull Type:	
Category:	Power		

Dimensions & Weight

Length:	93.00 ft	Draft - max:	5 ft 11 in - 1.8 meter
LOA:	93 ft 5 in - 28.47 meter	Bridge Clearance:	-
Beam:	24 ft 4 in - 7.42 meter	Dry Weight:	214685 ft
Deadrise Aft:	-		

Tank Capacities

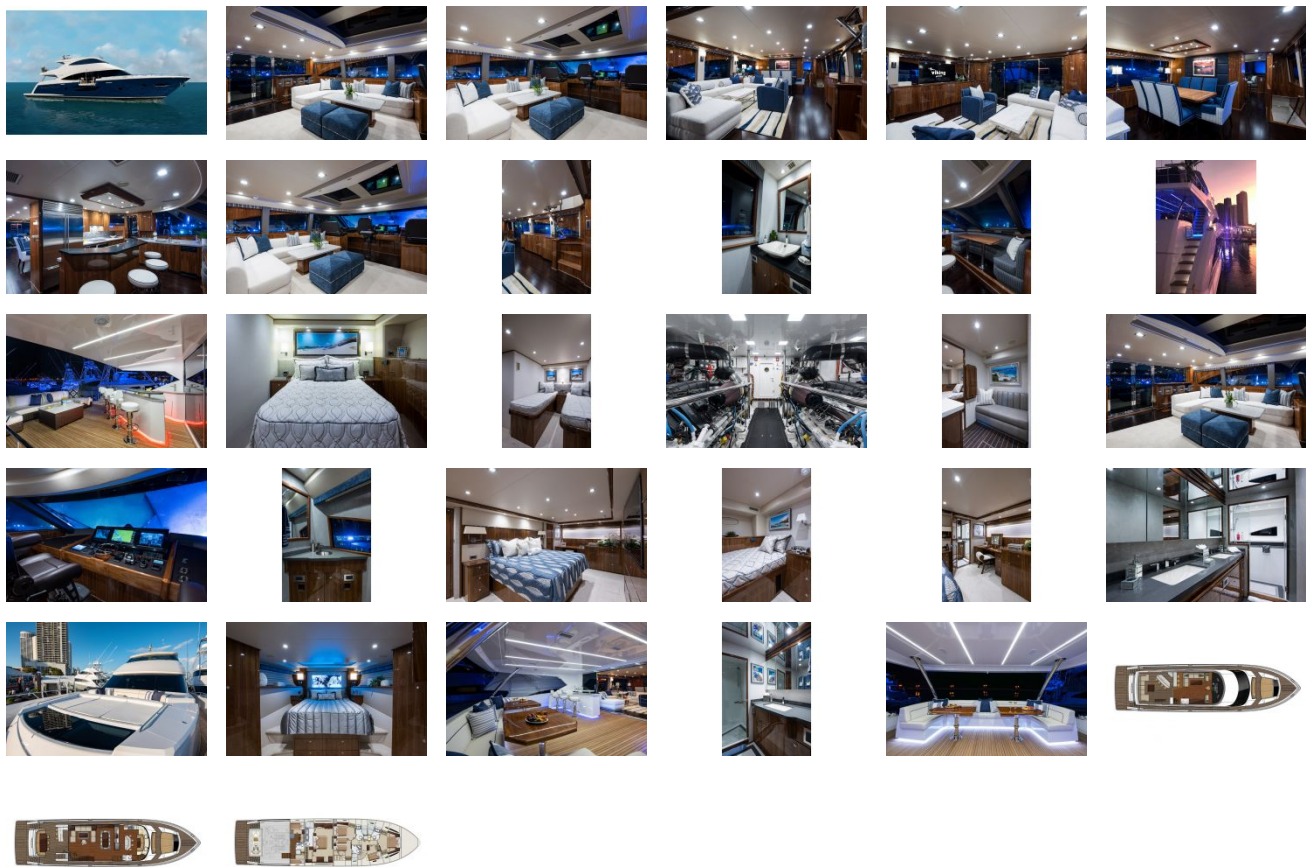
Fuel Tank:	2007 gallons - 1 tank(s)	Holding Tank:	-
Fresh Water Tank:	499 gallons - 1 tank(s)		

Accommodations

Total Cabins:	-	Crew Cabins:	-
Total Berths:	-	Crew Berths:	-
Total Sleeps:	-	Crew Sleeps:	-
Total Heads:	-	Crew Heads:	-
Captains Cabin:	No		

FEATURES

GALLERY



**South Jersey Yacht Sales**  
900 Ocean Drive  
Cape May, NJ 08204  
Phone: 609-884-1600