



North Point Yacht Sales
7330 Edgewood Road
Annapolis, MD 21403

Phone: 410-280-2038

Caymas 26 HB

Boat Type: Center Console



OVERVIEW

The New Caymas 26 HB does it all for the serious fisherman and for family fun. Performance Starts with a Michael Peters patented Stepped-Vee Ventilated Tunnel Hull. This hull delivers speed, fuel efficiency and a precise, dry and velvet-smooth ride with a 9-foot beam. Serious fishing starts with Oversized 35 gallon live wells, maximum storage tackle, large bow/stern fishing decks and a 90-gallon fuel tank to get you to the farthest fishing grounds and back. The Caymas 26HB is designed for family fun and a day's comfort with cushioned bow and stern seating, bow and stern cooler options, up to 8 speaker stereo, extra elbow room beam and a standard port a potti in the console when nature or a change of clothes is called for. See for yourself how the Caymas 26HB enjoys the best in marine fit and finish utilizing the highest quality marine hardware and craftsmanship. The Caymas 26HB can be rigged with a Yamaha, Mercury, Suzuki or Evinrude outboard up to 400 horsepower. The boat will provide great memories and a phenomenal ride.

SPECIFICATIONS

Basic Information

Manufacturer:	Caymas	Boat Type:	Center Console
Model:	26 HB	Hull Material:	
Year:	2020	Hull Type:	
Category:	Power		

Dimensions & Weight

Length:	26.00 ft	Draft - max:	1 ft 4 in - 0.41 meter
LOA:	25 ft 7 in - 7.8 meter	Bridge Clearance:	8 ft 3 in - 2.51 meter
Beam:	9 ft - 2.74 meter	Dry Weight:	4100 ft
Deadrise Aft:	19.00 °		

Tank Capacities

Fuel Tank:	90 gallons - 1 tank(s)	Holding Tank:	-
Fresh Water Tank:	8 gallons - 1 tank(s)		

Accommodations

Total Cabins:	-	Crew Cabins:	-
Total Berths:	-	Crew Berths:	-
Total Sleeps:	-	Crew Sleeps:	-
Total Heads:	-	Crew Heads:	-
Captains Cabin:	No		

FEATURES

Boat Systems

- 4 gpm Raw Water Washdown Pump
- Central Manifold Drain System w/ Shut Off Valves
- 35 gal. Transom Baitwell/Livewell w/ LED Light, 800 gph Aeration & High Speed Pick Up
- 2 – 1500gph bilge pumps (1 Auto & 1 Manual)
- 6 Gauge Trolling Motor Wiring Harness
- Battery Switch
- Circuit Breaker Protected Tinned Wiring
- Electric Trim Tabs w/ LED Indicators
- LED Navigation Lights / Flush Mounted
- Factory Installed Outboard Engine of Choice
- Backlit(LED) Stainless Steel Push-Button Switches
- 5 Battery Trays

Cockpit

- 4 – Horizontal Rod System
- 2 – Lockable Bow Storage Lockers - Rod Storage - Port and Starboard
- Deck Cover Boards
- LED Courtesy and Compartment Lights
- Raw Water Washdown Station Conveniently Located Under Gunwale
- Stainless Steel Lid-Latches with Stainless Steel Striker Plates
- Non-Skid Self-Bailing Cockpit
- Recessed Voyager Compass

Console/Helm

- Custom Fully Finished Fiberglass Console w/ Large Access Door
- Edson® Stainless Comfort Grip Wheel
- 8 – Stainless Steel Vertical Console Rod Holders
- Convenient USB Port in Console Storage Box
- Custom Console with Recessed Footrest and Storage Box
- Porta Potti
- Pro Series Color Matched Fiberglass Leaning Post with Custom Flip Up Bolster Seating with Backrest, (4) Rod Holders and Stainless-Steel Lighted Cup Holders
- Front of Console has Built in Cooler with Seat Cushion and Backrest
- 12 Volt Accessory Plug
- Custom Aft Bench Seat with Cushion and Backrest
- Dash Accommodates (2) 12" Screens and Full Instrumentation
- Custom Windshield w/ Powder Coated Frame
- Stainless Steel Console Grab Rail
- Tilt Steering

Construction

- 100% Composite Construction-No Wood
- 100% Hand-Laid Hull
- Tri-Core Composite Transom
- High Performance Resin with Barrier Coat
- Premium Gelcoat w/ UV Inhibitors
- Zero Flex Fully Foamed Stringer Grid System

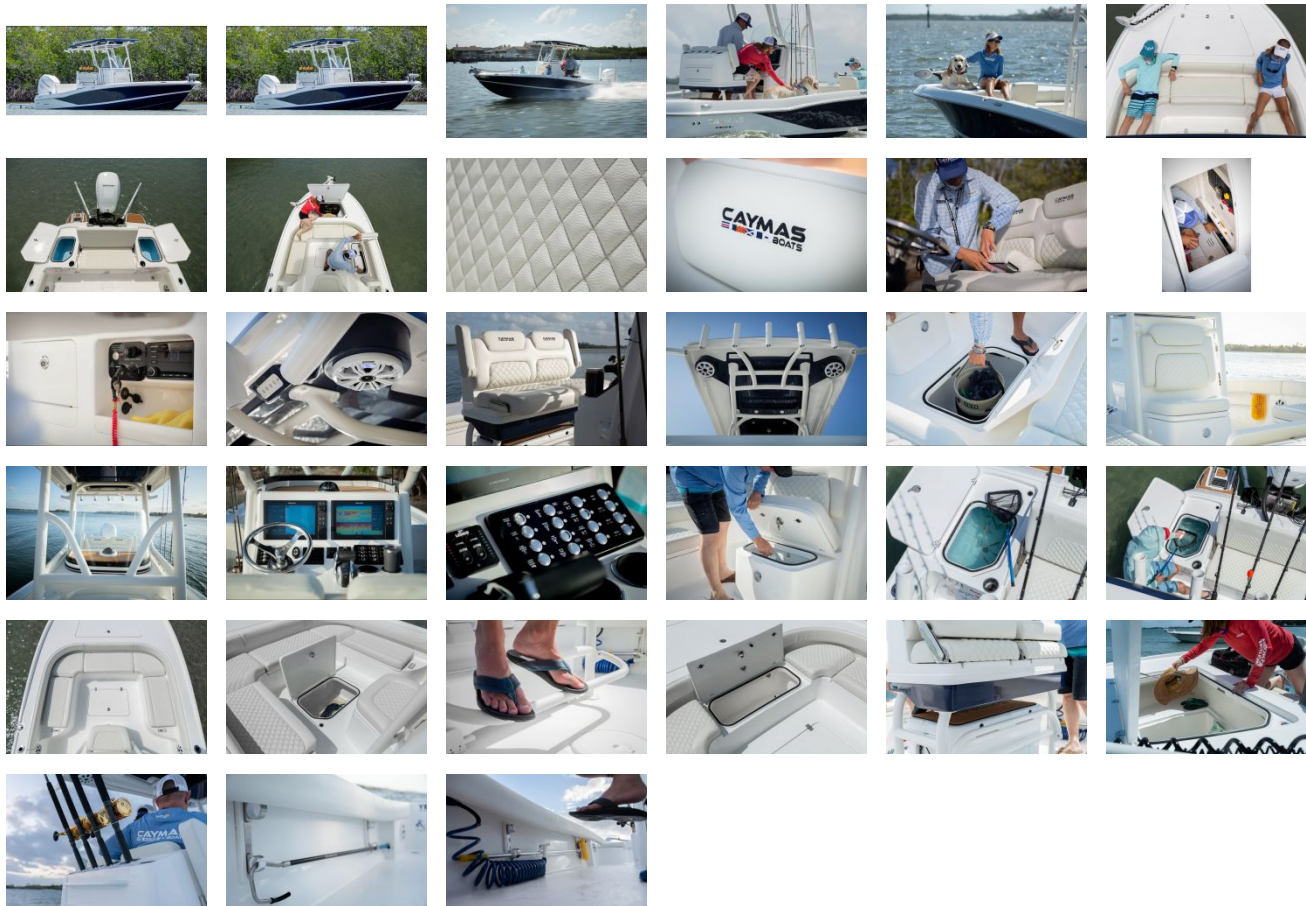
Deck & Hull

- 6 – 8" Thru-Bolted Stainless Steel Pull Up Cleats
- 4 – Flush Mount Stainless Steel Rod Holders (Gunwales)
- 316 L Stainless Steel Hardware
- 2 Full Swim Platforms; 1 with boarding ladder
- Aluminum Backing Plates Glassed in for Seats, Cleats, Rails, Rod Holders & Tops
- Reinforced Anchor Locker w/ Integrated Anchor Holder
- Completely Finished Fiberglass Lids, Boxes, Doors and Bilge Area
- Heavy Duty Rub Rail w/ Stainless Steel Insert
- High Speed Pick-Ups w/ Shut Offs for Washdown and Livewells

General/Warranty

- Lifetime Limited Warranty to the Original Owner
- Three Year Component Warranty covers carpet defects, steering, aeration pumps, boat electrical system, fuel tanks, gauges and deck hardware
- Structural Hull Warranty is transferable within first 10 years of manufacture to second owner.

GALLERY



North Point Yacht Sales
7330 Edgewood Road
Annapolis, MD 21403

Phone: 410-280-2038