



**North Point Yacht Sales**  
7330 Edgewood Road  
Annapolis, MD 21403

Phone: 410-280-2038

# Caymas 28 HB

Boat Type: Center Console



## OVERVIEW

The New Caymas 28HB is a perfect combination of pro-level fishability, distinctive contemporary styling, and family-focused comfort. Performance starts with a Michael Peters Stepped-Vee Ventilated Tunnel Hull. This patented hull delivers speed, fuel efficiency, and a precise and dry ride. Serious anglers will appreciate the 28HB's huge nonskid casting deck, massive built-in storage compartments for tackle and gear, 35 gallon aerated live wells and baitwell, backlit console display and a 120-gallon fuel tank for maximum range. Family and friends who hop aboard for the day of fun will love the 28HB cushioned seating at bow and stern, extra elbow room afforded by the boat's 9'4" beam, the combination of high freeboard and deep gunnels for added safety and security, a rocking stereo system and a "butter-soft" ride. See for yourself how the Caymas 28HP enjoys the best marine fit and finish utilizing the highest quality marine hardware and craftsmanship. The Caymas 28HB can be rigged with a Yamaha, Mercury, Suzuki or Evinrude outboard up to 425 horsepower.

## SPECIFICATIONS

### Basic Information

Manufacturer:	Caymas	Boat Type:	Center Console
Model:	28 HB	Hull Material:	
Year:	2020	Hull Type:	
Category:	Power		

### Dimensions & Weight

Length:	28.00 ft	Draft - max:	1 ft 5 in - 0.43 meter
LOA:	27 ft 7 in - 8.41 meter	Bridge Clearance:	8 ft 3 in - 2.51 meter
Beam:	9 ft 4 in - 2.84 meter	Dry Weight:	4300 ft
Deadrise Aft:	19.00 °		

### Tank Capacities

Fuel Tank:	120 gallons - 1 tank(s)	Holding Tank:	-
Fresh Water Tank:	8 gallons - 1 tank(s)		

### Accommodations

Total Cabins:	-	Crew Cabins:	-
Total Berths:	-	Crew Berths:	-
Total Sleeps:	-	Crew Sleeps:	-
Total Heads:	-	Crew Heads:	-
Captains Cabin:	No		

## FEATURES

### Boat Systems

- 4 gpm Raw Water Washdown Pump
- Central Manifold Drain System w/ Shut Off Valves
- 35 gal. Transom Baitwell/Livewell w/ LED Light, 800 gph Aeration & High Speed Pick Up
- 2 – 1500gph bilge pumps (1 Auto & 1 Manual)
- 6 Gauge Trolling Motor Wiring Harness
- Battery Switch
- Circuit Breaker Protected Tinned Wiring
- Electric Trim Tabs w/ LED Indicators
- LED Navigation Lights / Flush Mounted
- Factory Installed Outboard Engine of Choice
- Backlit(LED) Stainless Steel Push-Button Switches
- 5 Battery Trays

### Cockpit

- 4 – Horizontal Rod System
- 2 – Lockable Bow Storage Lockers - Rod Storage - Port and Starboard
- Deck Cover Boards
- LED Courtesy and Compartment Lights
- Raw Water Washdown Station Conveniently Located Under Gunwale
- Stainless Steel Lid-Latches with Stainless Steel Striker Plates
- Non-Skid Self-Bailing Cockpit
- Recessed Voyager Compass

### **Console/Helm**

- Custom Fully Finished Fiberglass Console w/ Large Access Door
- Edson® Stainless Comfort Grip Wheel
- 8 – Stainless Steel Vertical Console Rod Holders
- Convenient USB Port in Console Storage Box
- Custom Console with Recessed Footrest and Storage Box
- Porta Potti
- Pro Series Color Matched Fiberglass Leaning Post with Custom Flip Up Bolster Seating with Backrest, (4) Rod Holders and Stainless-Steel Lighted Cup Holders
- Front of Console has Built in Cooler with Seat Cushion and Backrest
- 12 Volt Accessory Plug
- Custom Aft Bench Seat with Cushion and Backrest
- Dash Accommodates (2) 12" Screens and Full Instrumentation
- Custom Windshield w/ Powder Coated Frame
- Stainless Steel Console Grab Rail
- Tilt Steering

### **Construction**

- 100% Composite Construction-No Wood
- 100% Hand-Laid Hull
- Tri-Core Composite Transom
- Premium Gelcoat w/ UV Inhibitors
- Zero Flex Fully Foamed Stringer Grid System

### **Deck & Hull**

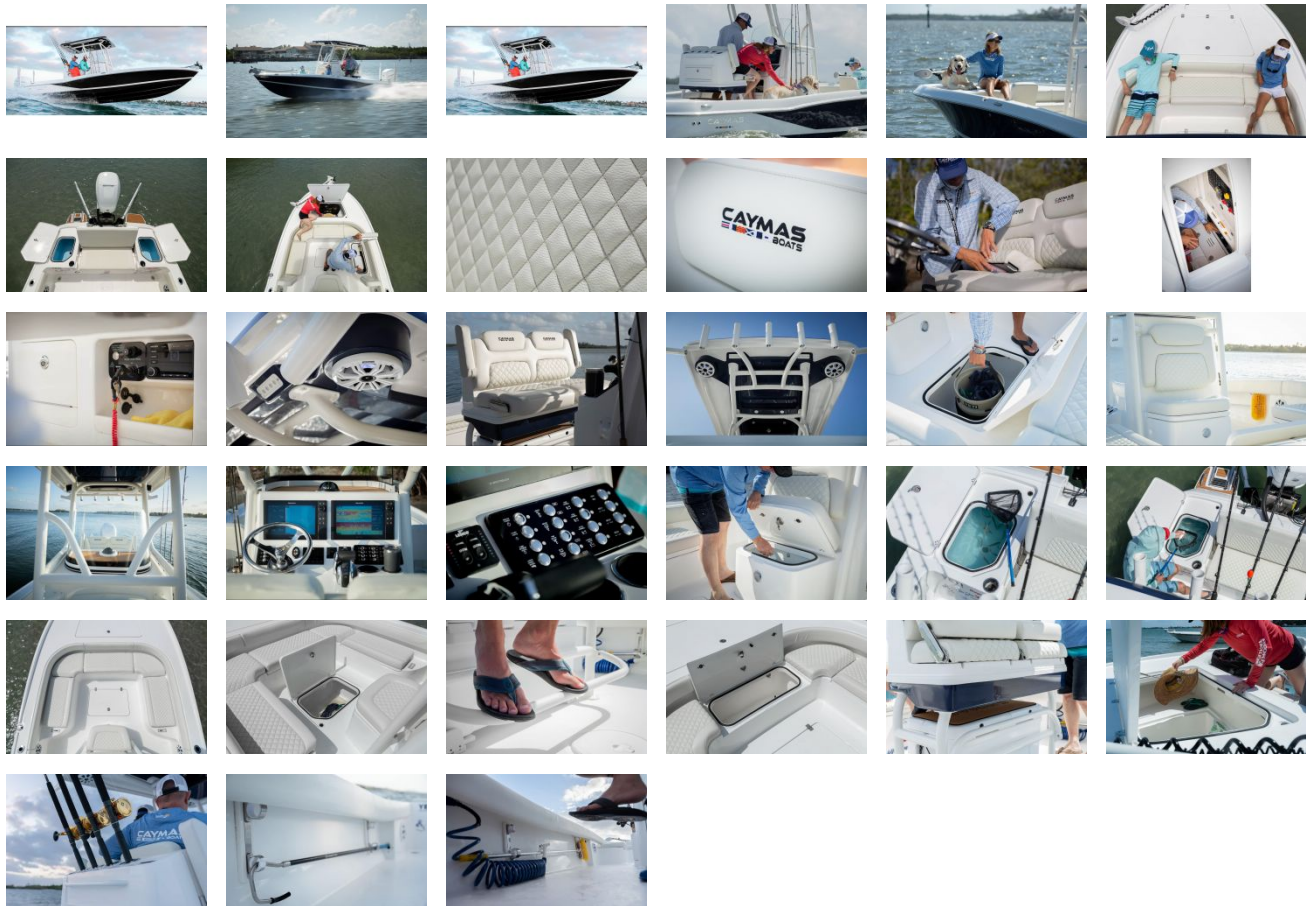
- 6 – 8" Thru-Bolted Stainless Steel Pull Up Cleats
- 4 – Flush Mount Stainless Steel Rod Holders (Gunwales)
- 316 L Stainless Steel Hardware
- 2 Full Swim Platforms; 1 with boarding ladder
- Aluminum Backing Plates Glassed in for Seats, Cleats, Rails, Rod Holders & Tops
- Reinforced Anchor Locker w/ Integrated Anchor Holder
- Completely Finished Fiberglass Lids, Boxes, Doors and Bilge Area
- Heavy Duty Rub Rail w/ Stainless Steel Insert

- High Speed Pick-Ups w/Shut Offs for Washdown and Livewells
- All Stainless Steel, Non-Corrosive Hardware
- 4" Jackplate
- Bow Anchor Cleat – 6"

#### **General/Warranty**

- Lifetime Limited Warranty to the Original Owner
- Three Year Component Warranty covers carpet defects, steering, aeration pumps, boat electrical system, fuel tanks, gauges and deck hardware
- Structural Hull Warranty is transferable within first 10 years of manufacture to second owner.

GALLERY



**North Point Yacht Sales**  
7330 Edgewood Road  
Annapolis, MD 21403  
  
Phone: 410-280-2038