

# Back Cove 390

Boat Type: Downeast



## OVERVIEW

BACK COVE YACHTS PRESENTS A NEW OUTBOARD-POWERED MODEL: THE BACK COVE 390.

Her cockpit is a fun and relaxing space with transom gates to port and starboard, a U-shaped settee across from an aft-facing seat, and a central table for al fresco dining and entertaining. Expansive storage below the cockpit is easily accessed through a large actuated hatch, and provides generous accommodations for all of your water toys and gear.

The 390 offers a hard back for a fully enclosed helm deck; a unique design in this segment, which allows for climate-controlled comfort and an extended boating season with optimal protection from the elements. Her indoor social spaces keep everyone connected, featuring a galley up design and side-by-side captain and mate seats opposite a comfortable U-shaped settee. The result is a perfect space where the crew can enjoy a meal, or lounge while staying out of the sun or the rain.

Below deck, owners and guests can relax in the privacy of a lower lounge and stream a favorite program to the Smart TV. The spacious owners' cabin forward offers a queen-sized island berth and private access to the head and shower. For the crew, two single beds in the guest cabin are secluded, well proportioned, and comfortable.

Standard power is triple 350hp Suzuki engines. Optional power installations include triple Yamaha 300s, and triple Mercury Verado 400s. The 390 hull design will feature Back Cove's proprietary Trailing Edge Lifting Surface (TRELIS) \*D\* for optimal handling and performance.

The first Back Cove 390 is scheduled to launch in Fall 2020, with her official debut occurring at the 2020 Fort Lauderdale International Boat Show.

## SPECIFICATIONS

### Basic Information

Manufacturer:	Back Cove	Boat Type:	Downeast
Model:	390	Hull Material:	Fiberglass
Year:	2020	Hull Type:	Planing
Category:	Power		

### Dimensions & Weight

Length:	39.00 ft	Draft - max:	3 ft - 0.91 meter
LOA:	41 ft 8 in - 12.7 meter	Bridge Clearance:	-
Beam:	13 ft 6 in - 4.11 meter	Dry Weight:	-
Deadrise Aft:	-		

### Tank Capacities

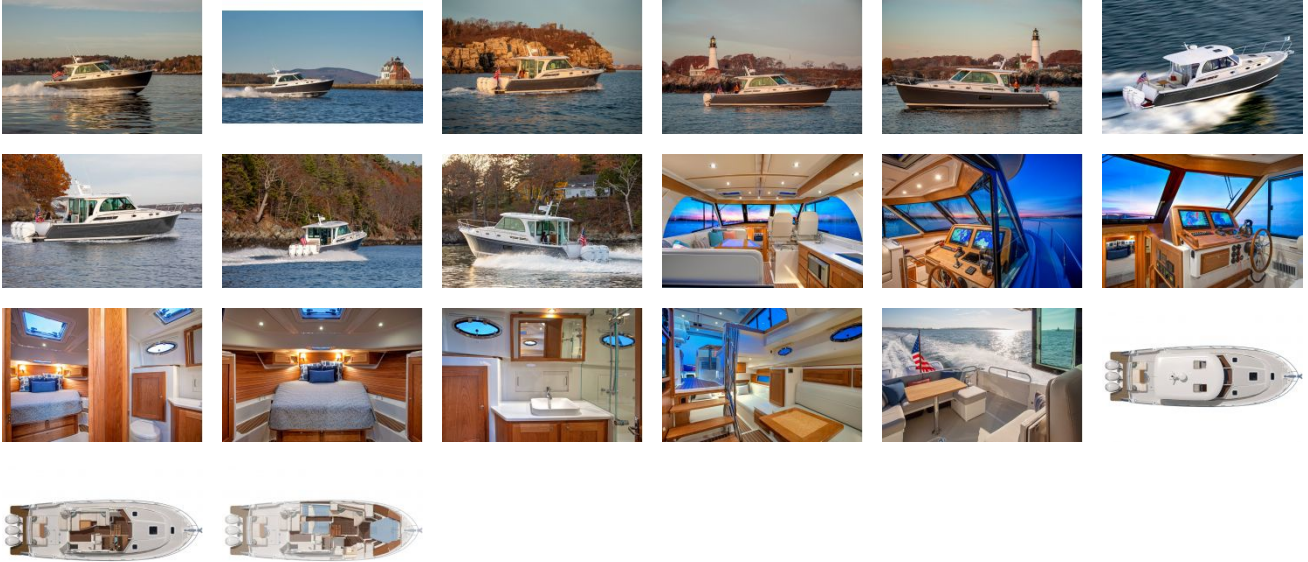
Fuel Tank:	550 gallons - 1 tank(s)	Holding Tank:	42 gallons - 1 tank(s)
Fresh Water Tank:	97 gallons - 1 tank(s)		

### Accommodations

Total Cabins:	2	Crew Cabins:	-
Total Berths:	4	Crew Berths:	-
Total Sleeps:	4	Crew Sleeps:	-
Total Heads:	1	Crew Heads:	-
Captains Cabin:	No		

## FEATURES

GALLERY



**DimillosYacht Sales**  
1 Long Wharf, Portland, ME 04101  
Phone: 207-773-7632