



**DimillosYacht Sales**  
1 Long Wharf, Portland, ME 04101  
Phone: 207-773-7632

# Sabre 66 Fly Brigde

Boat Type: Motor Yacht



## OVERVIEW

### **The first American-built Downeast motor yacht of her size.**

The Sabre 66 has been called “the highest expression of Sabre yet,” and her name reflects that quality; “Dirigo” is Latin for “I Lead” and is the official motto of the State of Maine. She features comfortable and functional living spaces, an airy galley, three berths each with a dedicated head, and demonstrated performance underway that is both quiet and invigorating. Add in the latest in digital switching systems and a nautically sensible design, and the Sabre 66 is an owner-operators dream.

Step aboard and discover everything that “Crafted in the Maine Tradition” means

SPECIFICATIONS

Basic Information

Manufacturer:	Sabre	Boat Type:	Motor Yacht
Model:	66 Fly Brigde	Hull Material:	
Year:	2020	Hull Type:	
Category:	Power		

Dimensions & Weight

Length:	66.00 ft	Draft - max:	5 ft 1 in - 1.55 meter
LOA:	73 ft 9 in - 22.48 meter	Bridge Clearance:	-
Beam:	18 ft 1 in - 5.51 meter	Dry Weight:	-
Deadrise Aft:	-		

Tank Capacities

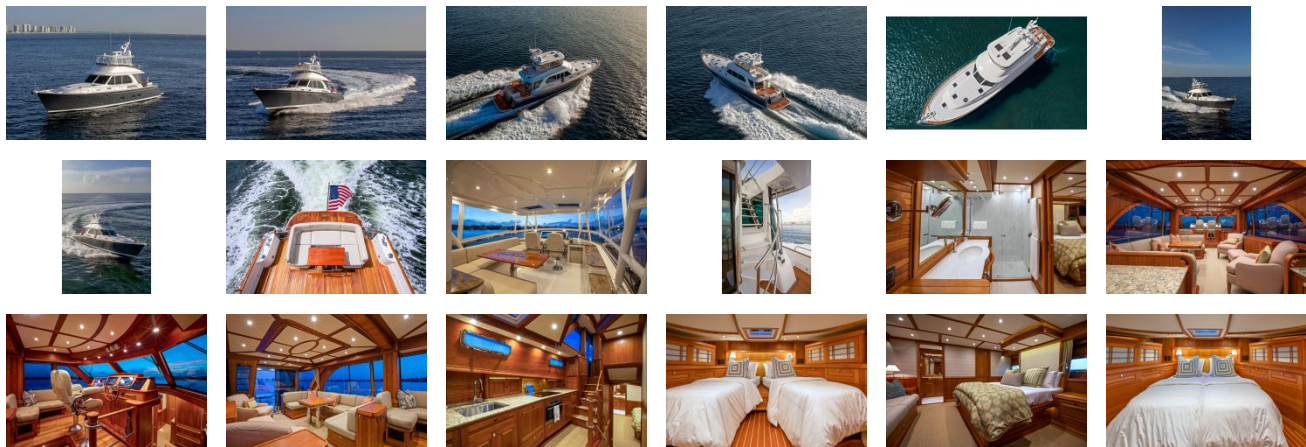
Fuel Tank:	-	Holding Tank:	-
Fresh Water Tank:	-		

Accommodations

Total Cabins:	-	Crew Cabins:	-
Total Berths:	-	Crew Berths:	-
Total Sleeps:	-	Crew Sleeps:	-
Total Heads:	-	Crew Heads:	-
Captains Cabin:	No		

FEATURES

GALLERY



**DimillosYacht Sales**  
1 Long Wharf, Portland, ME 04101  
Phone: 207-773-7632