



DimillosYacht Sales
1 Long Wharf, Portland, ME 04101
Phone: 207-773-7632

Monte Carlo Yachts Skylounge

Boat Type: Motor Yacht



OVERVIEW

The new MCY Skylounge Collection strengthens the yard's distinctive close relationship between the individual and the sea through new key features such as the wide and customizable enclosed Flybridge, which is available for the first time on an Italian-crafted yacht.

The MCY 70 Skylounge, which embodies the entire new range, is designed and crafted with customers' interests at heart and focuses on the concept of a yacht as a home-away-from-home. The new MCY Skylounge Collection offers owners unprecedented levels of customization and superlative comfort onboard all year round with unmatched 360° views on the horizon.

MCY Skylounge's sleeker exterior lines are designed to cruise safely and with comfort. Once again, the unmistakable touches of Nuvolari Lenard offer an increased exposure to natural light throughout the yacht while the general arrangement are characterised by the introduction of a new spacious enclosed Flybridge area that emphasizes the level of well-being on board to be enjoyed in every season.

SPECIFICATIONS

Basic Information

| | | | |
|---------------|--------------------|----------------|-------------|
| Manufacturer: | Monte Carlo Yachts | Boat Type: | Motor Yacht |
| Model: | Skylounge | Hull Material: | Fiberglass |
| Year: | 2020 | Hull Type: | |
| Category: | Power | | |

Dimensions & Weight

| | | | |
|---------------|--------------------------|-------------------|-------------------|
| Length: | 70.00 ft | Draft - max: | 6 ft - 1.83 meter |
| LOA: | 69 ft 1 in - 21.06 meter | Bridge Clearance: | - |
| Beam: | 17 ft 10 in - 5.43 meter | Dry Weight: | - |
| Deadrise Aft: | - | | |

Tank Capacities

| | | | |
|-------------------|--------------------------|---------------|---|
| Fuel Tank: | 1056 gallons - 1 tank(s) | Holding Tank: | - |
| Fresh Water Tank: | 211 gallons - 1 tank(s) | | |

Accommodations

| | | | |
|-----------------|----|--------------|---|
| Total Cabins: | - | Crew Cabins: | - |
| Total Berths: | - | Crew Berths: | - |
| Total Sleeps: | - | Crew Sleeps: | - |
| Total Heads: | - | Crew Heads: | - |
| Captains Cabin: | No | | |

FEATURES

MAIN DIMENSIONS

Overall length (LOA) ?21.08 | 69 ft 1 in
Maximum beam 5.45 m | 17 ft 10 in
Draft 1.85 m | 6 ft
Displacement 45 t Dry - 53 t Full

ENGINES

2xMAN V8 (1300 hp)

SPEED

Maximum speed: up to 26 kn
Cruise speed: 22 kn

TANKS

Fuel up to 4000 l | 1056 US gal

Fresh water 800 l | 211 US gal

NAVAL ARCHITECTURE & ENGINEERING

Monte Carlo Yachts

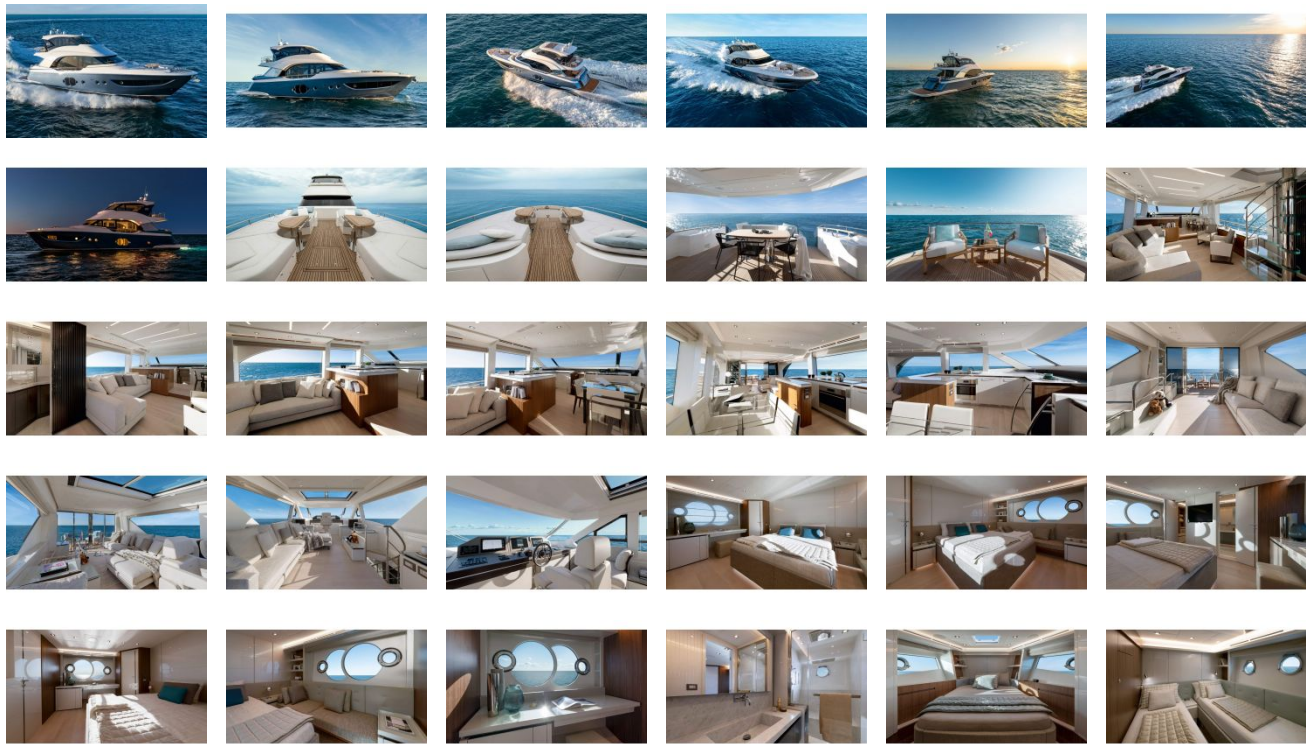
EXTERIOR AND INTERIOR DESIGN

Nuvolari Lenard

DESIGN CATEGORY

CE-A

GALLERY



DimillosYacht Sales
1 Long Wharf, Portland, ME 04101
Phone: 207-773-7632